



# The Maine Philatelist

Vol. 29, No. 1

July 1996

Whole No. 104

## What was Olive Oyl so hopping mad about?

Those of us who have been around for more than a few summers will likely recognize the character in the illustrated cover at right as Olive Oyl, Popeye's girlfriend. But we wonder why she's so hopping mad?

John M. Hotchner, a contributing editor at *Linn's Stamp News*, featured the cover in his "U.S. Notes" column in the April 1, 1996 issue of *Linn's*, and we reproduce it and the questions he posed here, with permission.

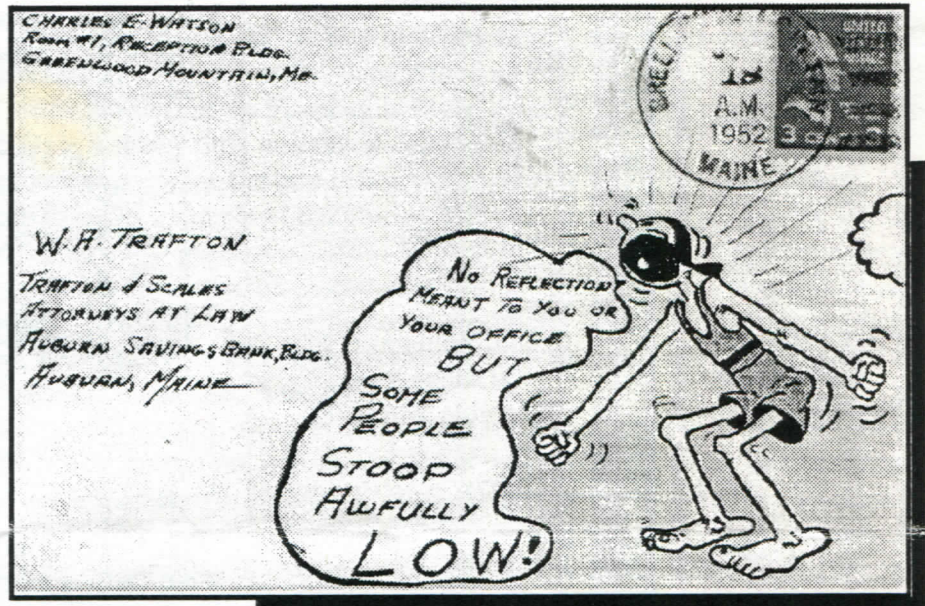
He mentioned that Olive Oyl was not included in the comics stamps when Popeye was honored. "But, as luck would have it, friend Ted Bahry found a philatelic connection while going through a box of covers at the Sarasota National Show in February.

"Shown ... is a bit of cartoon art on a 1952 cover that borrows Olive to make a point to the addressee: an attorney. Knowing no background of the parties or the case, we can only guess at what has upset the sender -- or whether the sender is just poking fun. What isn't in question is that the Olive figure is very much in character in this cartoon.

"In fact, I'm led to wonder if the sender had any connection with the strip. Popeye's creator died in 1938, five years before I was born. Yet I remember not just the newspaper strip but television and movie versions of it, all of which had to have artists and production people involved.

"So, if anyone among *Linn's* readers (and now readers of *The Maine Philatelist*) can connect Charles Watson of Greenwood Mountain, Maine, to the Popeye productions, please drop me a line at the address listed at the end of this column."

And there you have it. Your editor, who has traveled fairly extensively throughout his native state, doesn't remember ever hearing of a Greenwood Mountain in Maine, but our reliable Secretary, Bruce Hazelton, saved the day. In his book, *The Post Offices of Maine: A Rarity Guide*, Bruce notes that the



Greenwood Mountain Post Office was located in the town of Hebron, in Oxford County, and operated from January 18, 1918 to July 31, 1959. The Greenwood Post Office, in the town of the same name, opened on January 12, 1828 and closed on August 30, 1902. Bruce rates postmarks of the Greenwood Mountain Post Office on the low end of his scale, allotting it a three on a rarity scale where 10 is the most rare.

So, now that we know about the post office, can anyone help with identification of the sender or the cover itself? The return address is: Charles E. Watson, Room 1, Reception Bldg., Greenwood Mountain, Me. If so, please let your editor know, and I will forward it on to Mr. Hotchner. If you wish to write to him direct, his address is: care of *Linn's Stamps News*, P.O. Box 29, Sidney, OH 45365.

### Active interest in annual Board of Directors election

There was active interest in this year's election for the Board of Directors. Unanimously elected to another two year term on the Board were Jim Foote III of Manchester, Ray Gagnon of Lewiston, E. David Muzzy of Westbrook and Richard Warren of Cushing. Thanks to all who took the time to cast ballots in this election.



*The Maine Philatelist* is published quarterly by the Maine Philatelic Society, Inc.

The purpose of the Society, a non-profit Maine corporation, is to promote philately in the Pine Tree State. Membership is open to anyone. Membership applications are available from the Secretary, listed below. Dues are \$5 per year.

A Life Membership is also available.

Contact the Secretary for details.

Articles for publication should be sent to the President/Editor at address below.

**OFFICERS**

*President*

Everett L. Parker (1997)

HC 76, Box 32

Greenville, ME 04441-9727

(207) 695-3163 (Voice and Fax)

email - eparker@agate.net

*Vice Presidents*

Robert Turmelle (1997)

8 Birch Street

Waterville, ME 04901

Richard Williams (1997)

20 Ridge Road

Waterville, ME 04901

*Secretary*

Bruce Hazelton (1997)

P.O. Box 67A

Cumberland Center, ME 04021

*Treasurer*

Terry Drummond (1997)

P.O. Box 57

Bingham, ME 04920

**BOARD OF DIRECTORS**

Richard Warren of Cushing (1998)

E. David Muzzy of Westbrook (1998)

Ray Gagnon of Lewiston (1998)

Jim Foote III of Manchester (1998)

Bob Vear of Waterville (1997)

Andrew P. Ferretti of Bingham (1997)

**PUBLISHING SCHEDULE**

The Maine Philatelist is distributed to members in January, April, July and October of each year. Below is a list of deadlines for each issue and the anticipated mailing date. While deadline for copy (articles) is firm, the anticipated mailing date is just that -- a "best guess" of mailing.

ISSUE COVER DATE	DEADLINE FOR COPY	JOURNAL TO PRINTER	ANTICIPATED MAILING DATE
January	Dec. 15	Dec. 30	Jan. 15
April	March 15	March 30	April 15
July	June 15	June 30	July 15
October	Sept. 15	Sept. 30	Oct. 15

**Pictorial cancel for Hampden children's day activities set**

The U.S. Postal Service will provide a special cancellation for the 18th annual Hampden's Children's Day activities on Sunday, August 17. The event will be held (rain or shine) from noon to 3 p.m. at the MSAD 22 on Route 1A in Hampden.

This is the first time the U.S. Postal Service has provided a special cancel for the children's day festivities. In addition to the special cancel, an original 1925 Model T Depot Hack owned by Richard Osgood of Lincolnville will be on dis-



play. And in conjunction with the 100th anniversary of Rural Free Delivery (RFD), a limited number of envelopes with the RFD logo will be available.

Stamps available for purchase at the event will include the antique autos series and national environmental series, both from 1995, prehistoric animals and folk heroes. Mail order requests for the pictorial cancellation will be accepted at the Hampden Post Office beginning August 1, 1996. All requests must be postmarked before September 16. The address is: Hampden Post Office, 114 Western Avenue, Hampden, Me 04444. Mark the outside envelope, "Hampden's Children's Day Pictorial Cancellation."

For additional information about the pictorial cancellation or children's day activities, contact Susan E. Starbird, publicity chair, Hampden's Children's Day Committee, 10 Emerson Drive, Hampden, ME 04444.

**Stamp club plans to sell special covers recognizing QEII at Bar Harbor**

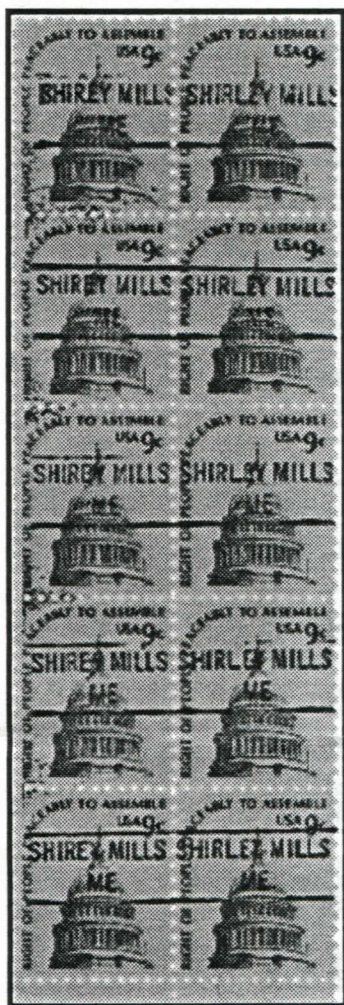
The Queen Elizabeth II is scheduled to anchor in Bar Harbor on October 7, 1966, and the Union River Stamp Club tentatively plans to sell special covers on the town pier that day, according to member J. Walter Allen of Bar Harbor.

For more information, contact Mr. Allen at 5 Derby Lane, Bar Harbor, ME 04609-1708.



# Why, surely it's Shirley!

E. David Muzzy of the MPS Board of Directors explains what happened when he asked for a precanceled stamp at the tiny Shirley General Store.



Northwest of Bangor, Maine, on the way to Moosehead Lake, a side road off Route 15 leads to the little hamlet of Shirley Mills. Named for a number of sawmills and shingle mills located along the headwaters of the Piscataquis River, industry has long-since departed. Today, Shirley Mills is a sleepy little residential community.

A number of years ago, when the post office was located in Phillips' General Store, I had occasion to stop in to get a sample of the Shirley Mills precancel hand stamp. Mr. Phillips, the postmaster, told me that postal regulations allowed each postal facility to have a precancel device even though there were no precancel permit holders in town. I'm quite confident that this was made known to him by a collector of precancels from somewhere other than in town. Anyway, by whatever means of persuasion or for whatever reason, the post office at Shirley Mills obtained a precancel handstamp.

The precancel device is a 2x5, which is to say there are two columns by five rows, and will cancel ten regular size stamps per impression. What makes this particular device different from all the others is that the word "Shirley" is misspelled in one column. In a block of ten stamps precanceled with this device, the name of the town is erroneously spelled five times!

I do not know if the cancelling device was ever corrected; whether it is still in existence; or for that matter if there is even any longer a post office in Shirley Mills. For the avid collector of precancels, this is probably a "must have." For any other stamp collector, it is an oddity. For Maine stamp collectors, it is another interesting anecdote about philately in our state.

*(EDITOR'S NOTE: The Shirley Post Office does indeed still exist, and is still found in a corner of the Shirley General Store.)*

## MPS souvenir sheet saluting Chesuncook tourist dispatch stamps is now available

Certain to be a hit with cinderella collectors, the Maine Philatelic Society has created a special souvenir sheet honoring the centenary of the Chesuncook Lake tourist dispatch stamps. Secretary Bruce Hazelton described and illustrated the original Chesuncook tourist dispatch stamps in the August 1995 issue of *The Maine Philatelist*.

Designed by Jim Foote III of Manchester (a member of the MPS Board of Directors), the souvenir sheet is shown at right. They were first available at MUDPEX at Fairfield in May. The sheet is multicolored and 3.25 x 3.25 inches in size.

The price is \$1 per sheet, or \$6 for an uncut sheet of six. Send a check, made out to Maine Philatelic Society, to Richard Warren, P.O. Box 48, Cushing, ME 04563. Be sure to include a SASE.



*The new MPS souvenir sheet*



# A primer of early Maine philatelic history

Continued from April 1996

By Richard Williams

Vice President

A postal history of Augusta by Stinson reports that at this time (1806), Samuel Titcomb the second postmaster of the town, appointed Captain Isaac Carter as deputy and that Carter performed the duties pertaining to the office. Three mails arrived and departed from Augusta weekly; Monday via Brunswick, Tuesday via Monmouth and Saturday via Wiscasset. This history also states that a mail to Farmington and one to Norridgewock arrived and departed Thursday of each week. Peter Gilman was carrier to Norridgewock and Col. T. S. Estabrook, who previously covered the route to Brunswick on horseback, now drove the stage.

A *Farmer's Almanack* of 1806 gives a different schedule for the route from Portsmouth to Schoodic, but indicates about the same rate of travel. According to this publication, "The Portsmouth Mail Stage from Boston, through Salem, Newburyport, Portsmouth and Portland to Wiscasset, starts from Boston every day (Sunday excepted) at one o'clock P.M. and arrives at Newburyport the same evenings and at Portland the next day at 12 a.m. Starts from Portland every morning at half past 11 o'clock and arrives at Newburyport the same evenings and at Boston the next days at 7 o'clock P.M."

The Portland-Wiscasset leg of the journey was covered on Tuesday, Thursday and Saturday going east, and Monday, Wednesday and Friday to Portland. It will be noted that, in both schedules, Newburyport was an overnight stop but that in one instance the route was covered from Newburyport to arrive at Boston about noon whereas in the other, arrival was at 7 p.m.

Maine, being greatly cut up by rivers and streams, presented problems to the builders of roads. Many ferries and bridges were a necessity and in the Massachusetts Register of 1802 is found a table which has a direct bearing on this phase of the development of the post roads.

"Corporations for erecting Toll Bridges in the

District of Maine. Incorporated

1792, Mar. 9: Bridge over New Meadows river between Bath and Brunswick.

1793, Mar. 22: Bridge over Piscataqua River between Kittery and Langdon's Island.

1793, Mar. 26: Act to regulate the Toll over Sauko River Bridge.

1793, June 22: Bridge over Shepskot River between Pownalboro and NewCastle.

1794, Feb. 25: Bridge over Fore River, between Portland and

*Continued on page 6*

## I WANT YOUR STAMPS!



I'm always seeking new material for my customers.

Especially needed are collections and foreign

covers. But I buy everything!

No lot is too small! Ship insured mail for my best offer, or visit my shop in the beautiful Moosehead Lake region!

*(I also sell collections, dealer's stocks, etc.)*

*Everything is priced at wholesale for dealer and collector alike.)*

**Everett L. Parker**

HC76, Box 32, Greenville, ME 04441

(207) 695-3163 (FAX & phone) e-mail = eparker@agate.net

## PRECANCELS AND PERFINs ON APPROVAL

- Fast, responsive service
- Low, fair prices
- Friendly help with all questions

If you are looking for Buros, Town and Type by State, general precancels or perfins, drop me a line.

**DICK LAETSCH**  
108 Ashswamp Road  
Scarborough, ME 04074



## MPS board considers special seminar for new collectors

Concerned about the lack of new collectors entering the stamp collecting hobby, the Board of Directors of the Maine Philatelic Society is looking at ways to attract the people to philately and thus to join the MPS.

One of the ways under consideration is a special seminar to teach the basics of philately. At the Board meeting on June 22 at Kennebec Valley Technical College (KVTC), it was decided to pursue such a program if people could be recruited to properly staff it.

In addition, the Board is formulating plans to develop a video program which could be used by stamp clubs, local television stations and collectors. The video program would serve the same purpose as the seminar and would be particularly helpful to those collectors who might not be able to make a day-long seminar.

In its present form, the seminar concept calls for several

advanced collectors to present a brief discussion of various facets of collecting -- including albums and supplies, watermarks, perforations, types of printing used in producing stamps, etc.

"But the key here is to attract knowledgeable collectors who would be willing to devote a day to helping with this seminar," said President Everett Parker. "It will not succeed without direct input from our members, many of whom are vastly qualified to teach these fundamentals."

Anyone willing to help with the project is asked to contact Parker at the address or telephone number shown on page two. He also can be reached by e-mail at "eparker@agate.net" (without the quote marks). Depending on how quickly a program can be put together and promoted, the seminar could be held this fall or during the winter or next spring, board members decided.

## Post Offices of Maine

*A regular feature*

By Richard W. Gerry

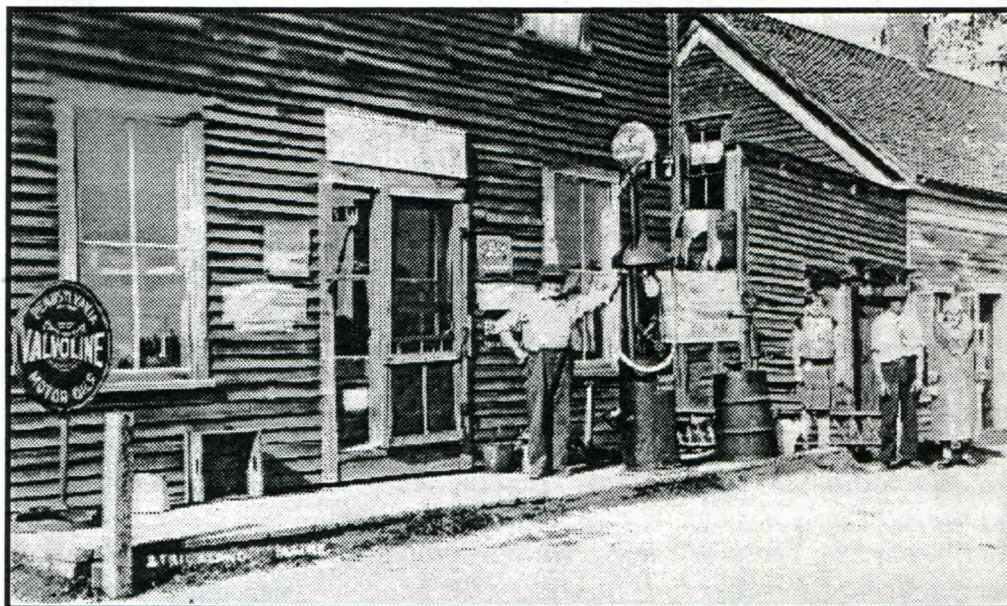
I lived in Strickland (Androscoggin County) from age two until nine with my grandparents and spent nearly all of my weekends, holidays and vacations there until I was 17. The post office was a small room in the corner of the general store run by Nate Sawtell who was also the postmaster during my early years and later by Ed Johnson, the man leaning on the gas pump in the photo. Note the price of gas (17 cents a gallon). Ed's wife is in the heavy coat at the far right. I'm not sure of the identity of the other two people. Behind them is the house where they all lived, which is more or less attached to the general store/post office.

Over the store/post office was a large hall where the local folks got together for meetings and Saturday night dances. Ed Johnson was a good fiddler, an African-American lady played the piano, I often brought a friend up from Lewiston who played the bones and I played the harmonica. Folks came from miles around with their families (no baby-sitters in those days). The older folks would dance with their boots on while the little ones slept, (I'll never know how) on the benches around the hall.

The Strickland Post Office was across from the railroad station. Trains ran north and south twice a day. If no passengers were to get off, the train would simply slow down and the incoming bag of mail would be tossed out onto the station platform. The outgoing mailbag would be tossed into the

open door of the mail car, or if it was hanging on the post, someone would grab it with a hook from the rail car. If he missed, no problem, another train would be along in a few hours.

Incidentally, the post office was not always near the rail-



*Photo of the Strickland Post Office*

road station. The 1873 map which I have shows it to be in a building near the east end of the ferry and the name was Strickland's Ferry Post Office. No buildings are shown where the railroad station/store/post office was located when I was in the area.

*The Strickland Post Office was a part of Livermore Falls and opened July 12, 1894 and closed December 31, 1944. It was formerly the Strickland Ferry Post Office.*



## A primer of Maine philatelic history

*Continued from page 5*

Cape Elizabeth.

1794, Feb. 25: Bridge over Back Cove River between Portland and Falmouth.

1796, Feb. 8: Bridge over Kennebeck River near Fort Western in Augusta.

1796, Feb. 26: Bridge over Amereskoggin-Great Falls between Brunswick and Topsham.

1796, Mar. 7: Bridge over Eastern River in Dresden, near Call's Ferry (Lower Bridge).

1796, Mar. 7: Bridge over Eastern River in Dresden, near Lithgow's Mills (Upper Bridge).

1797, Mar. 10: Bridge over Damaeskotti River, near falls between NewCastle and Nobleboro.

1797, Jun. 22: Bridge over Sauko River, from Biddeford, across Springs Island to Pepperelboro.

1797, Jun. 22: Bridge over Great Amereskoggin River, near Twenty-Mile Falls in Lewiston.

1798, Feb. 17: Bridge over York River at Trafton's Ferry.

1801, Feb. 10: Bridge over Belfast River in Belfast, in the county of Hancock.

1801, Jun. 19: Bridge over Kenduskeag River in Bangor."

The utility of the aforementioned bridges, with particular reference to the mail routes, may be judged from the following list of Post Offices in the District in 1805:

Alfred, Bangor, Bath, Berwick, Bridgetown, Bristol, Brownfield, Brunswick, Buckfield, Buckstown, Buxton, Camden, Canaan, Castine, Chandlerville, Chesterville, Dennysville, Douty's Falls, Dresden, Eastport, Farmington, Fayette, Frankfort, Freeport, Fryeburgh, Gardiner, Georgetown, Gorham, Gray, Greene, Hallowell, Hampden, Hiram, Isle-Shoals, Kennebunk, Lebanon, Lewiston, Limerick, Limington, Lincolnville, Machias, Minot, Monmouth, Mount Vernon, Narraguagus, NewCastle, New Gloucester, New Milford, New Sharon, Norridgewock, North Yarmouth, Norway, Orrington, Paris, Parsonfield, Passamaquoddy, Pepperelboro, Pittstown, Portland, Prospect, Raymond, Readfield, Saccarappe, Sanford, Scarborough, Shapleigh, Standish, Sullivan, Thomaston, Trenton, Turner, Vassalborough, Waldoborough, Warren, Waterborough, Waterford, Waterville, Wells, Windham, Winslow, Winthrop, Wiscasset, York.

This list is composed of eighty-three offices of which all but eleven are in operation at this writing, though minor changes in name spellings occurred. It represents an increase of forty-two offices over the year 1798. Six years later, in 1811, there were 123 offices, indicative of the rapidity with which the postal system expanded when peace and security became an accomplished fact. Buckstown became Bucksport; Narraguagus became Cherryfield, Pepperelboro became Saco, Saccarappe became Westbrook.

*This series will continue in the October issue of TMP.*

## THE CLASSIFIEDS

*Classified advertisements are free to non-dealer members. You may use this space to buy and sell, trade or swap. Dealer members are asked to contact the Editor for advertising details. When sending an advertisement, please mark it for the Classifieds and indicate how many issues you wish it to appear. All ads will appear twice and be removed unless otherwise indicated.*

### WANTED

Wanted: Maine hunting and fishing stamps properly used on licenses. Also always looking for other New England state revenues. Also looking for Old Home Week seals. I have many from New England to trade. Terence Hines, P.O. Box 629, Chappaqua, NY 10514-0629. (4-96)

Exchange clubs: exchange duplicates at home, your only cost is postage. Please send SASE for details. Write to Suffolk Exchange, P.O. Box 406, Belgrade Lakes, ME 04918-0406 (3-96)

Will trade Maine post cards for Vermont post cards, pre-1925. Paul Cook, P.O. Box 320, Chester, VT 05143. Telephone (802) 875-2118. (4-96)

Wanted: very fine to fine Maine stampless folded letters and covers. John Ordway, 44 Pine Ledge Road, Bangor, ME 04401-2097. (4-96)

Interested in purchasing foreign covers in quantity. Write first, giving quantity and general complexion and age of material. F.D. Demers, 24 Lawn Avenue, Rockland, ME 04841 (4-96)

Wanted: modern covers: Precancels on junk mail, Express mail, vending machine insurance labels, Special Delivery, postage dues, etc. Rob Washburn, P.O. Box 840, Skowhegan, ME 04976. (4-96)

Wanted: documentary revenue stamps featuring the battleship *Maine*. I need Scott's #R161, R165, R166, R169, R170, R172. Also, proprietary issue, #RB20, RB21, RB33, RB26 and RB28. Write to: Kenneth R. Weeks, P.O. Box 258, Manchester, ME 04351. (4-96)

*Classified advertisements are free for non-commercial users. Here's a chance to sell unwanted stamps or buy those elusive items you need. Classifieds for dealers are 20 cents per word, per insertion.*



**ADDENDA AND ERRATA (Continued)**  
*The Post Offices of Maine: A Rarity Guide*

There are addenda and errata to The Maine Philatelic Society's recent book. Additional updates will be published in forthcoming issues of *The Maine Philatelist*. Note under "Explanation of Terms," New Hampshire should read 'Maine.'

PAGE	POST OFFICE	TOWN	R	COUNTY	ESTABLISHED	DISCONTINUED	NOTES
1	ADD Air Base Sta.	Bangor	6	Penobscot	1 May 1942 EKU	1 April 1948 LKU	Changed to Dow Air Force Base Sta., Bangor
1	Allagash	All. Plan.	7				
2	Appleton Rural Br. Union	Appleton	9	Waldo	22 Aug. 1960		
2	Army Air Base Br.	Pres. Isle	5	Aroostook			
3	Auburn Sta. No. 1	Auburn	0	And.	16 July 1934 EKU	Operating	
3	Auburn Sta. No. 2	Auburn		And.	29 Oct. 1934 EKU	?	
3	Auburn Sta. No. 4	Auburn		And.	5 Jan. 1932 EKU	?	
3	Augusta Sta. No. 1	Augusta	0	Ken.	8 May 1934 EKU	Operating	
3	Augusta Sta. No. 3	Augusta	0	Ken.	14 Apr. 1933 EKU	Operating	
3	Ayers (1)	Charlotte	8	Wash.	25 Jan. 1900*	3 Sept. 1904 LKU	
3	Backriver						
3	Bald Mountain Rural Branch, Oquossoc	Rangeley	0	Franklin	30 June 1966	Operating	Summer office
3	Bangor Sta. No. 1	Bangor	0	Penobscot	*15 Feb. 1941	Operating	
4	Bangor Sta. No. 2	Bangor	0	Penobscot	?	Operating	24-11-70 was located in Liggett's, Broadway Shopping Center
4	Barrett	Sumner	5	Oxford	17 June 1901	28 Feb. 1907	
4	ADD Bath Sta. No. 1	Bath	6	Sagadahoc	8 May 1934 EKU	?	
4	Bayville (Scratch IND)						
5	Bayville COP	Boothbay Harbor					Scratch IND. in Bayville Ind., Rur. Sta. Seen "Bowerbanks"
7	Bowerbank						Postmark seen Bridgeton in Banknote period
8	Bridgton						Postmark seen 22 July 1968
13	Christmas Cove						
20	Eastern Maine	Hampden (not Hampton)					
23	ADD Eastport, Maine Quoddy Station	Eastport	4	Wash.	*1935 EKU	?	Postmark with only Quoddy, Maine also used.
27	Five Islands (2)						Spelling changed from Five Island, 1884
27	Fort Levett Station	Portland	6		17 July 1941		
27	Fort McKinley Sta.	Portland			*1937 EKU	31 Dec. 1948	
27	Fox Isle	Vinalhaven (Not Vialhaven)					

\* EKU means "Earliest Known Use. LKU means Latest Known Use"



### President's Message

By Everett L. Parker

I'm happy to report that as of the first of July, we had 212 paid members of the Maine Philatelic Society. I had been looking forward to crossing the 200 mark, and had a mini celebration of sorts when I entered number 200 in the computer. Thanks to everyone responsible for bringing in new members. I know several have signed up following MUDPEX in April, and a special welcome is extended to those folks.

I'm a stickler for uniformity. I like things to remain in the same space in a journal so I will know where to find it. But sometimes there's not room enough to keep things in their same location. I have moved the Classifieds from the space opposite this column to page six, where hopefully it will stay. There wasn't room on this page with the number of members taking advantage of the free listings, and I couldn't go deeper into the mailing portion of the page.

If you're not taking advantage of this free listing, you should. Whether you're looking for an elusive item, wanting to sell a collection or particular stamp, or doing research, the Classifieds is the place to turn to for help. I'll run the ad for a couple of issues free, more if there's room. Just think, an advertisement of this type in other journals would cost you more than what you pay for an annual membership! That's it for this time -- keep cool in the summer heat and remember, winter's just around the corner!

Maine Philatelic Society  
HC 76, Box 32  
Greenville, ME 04441-9727

### Bruce Hazelton honored by the York County Stamp Club

Bruce Hazelton of North Yarmouth, the dean of Maine philately, has been honored for his many accomplishments by the York County Stamp Club.

The club presented its Edwin M. Thayer Memorial Award at a special banquet on June 13. Edwin M. Thayer was a charter member of the York County Stamp Club, and the award is presented to honor his memory, to increase member participation, and to promote interest in the hobby in York County.

Criteria used in awarding the honor include attendance at meetings, willingness to participate, club programs, exhibits at the club's annual show and recruiting new members.

Bruce Hazelton has been a longtime member of The Maine Philatelic Society, and has served in many capacities in the organization over the years. At present, he is Secretary, and in that role takes care of day to day correspondence, etc. of the Society.

Mr. Hazelton is a longtime resident of North Yarmouth, is retired, and is active in community affairs in both North Yarmouth and Yarmouth.

The Board of Directors of The Maine Philatelic Society extends its best wishes to Bruce Hazelton on his selection for this prestigious award.



### TO:

Kindahl, Mr. Kelvin #549 (6-97)  
29 Clark Street  
East Hampton, MA 01027-2329

**IMPORTANT NOTICE:**  
If (6-97) or later date does not appear after your name on the mailing label, this is YOUR LAST ISSUE! You must renew today!

0121 125PPE007K10195 44 1000 #1