



# The Maine Philatelist

Vol. 29, No. 2

October 1996

Whole No. 105

## Maine Rural Free Delivery postmarks

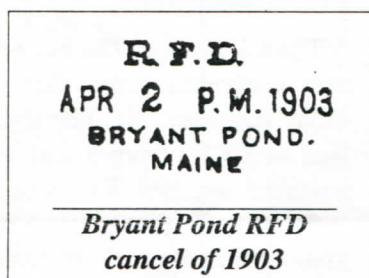
This year is the 100th anniversary of Rural Free Delivery (RFD) in the United States. Perhaps nowhere has the importance of RFD been more evident than in the rural areas of the Pine Tree State.

Sterling T. Dow, perhaps best known to older members of the Maine Philatelic Society (MPS) as author of a definitive treatise on Maine postal history, wrote about Rural Free Delivery postmarks in the February 11, 1946 issue of *Mekeel's Weekly* (now *Mekeel's and Stamps*).

In his article, Dow stated that the first RFD routes in Maine were out of Gorham, Sebago Lake and Naples during 1896. But, he said, distinctive postmarks were not adopted until around 1900. Dow added that he had not been able to determine why the practice of postmarking RFD mail was discontinued sometime around 1908, but speculated it may have been because rubber handstamps wore out.

The usual makeup of the postmarks was in a straight line, he said, with four lines. The first line was the R.F.D. designation. The second and third lines were the name of the office from which the route started and the date. "The covers seen show that there were about as many postmarks that showed the office in the second line and the date in the third as there were that showed the date in the second line and office in the third," Dow wrote. The fourth line was "ME." or "MAINE." A considerable number of postmarks showed "A.M." or "P.M." in various positions in the date line. The only exception to this makeup, Dow said, was the Buckfield circle.

There was considerable variation in the fonts of type used, which suggested they did not come from a common source. If they had been supplied directly from the post office in Washington, Dow said, one might expect a uniform type of postmark for all offices. "A reasonable



conjecture is that they were made locally at the expense of the (post office) department," he wrote. The prevailing color of postmarks was, of course, black, but blue was also used, along with magenta (much less frequently).

RFD postmarks were known from a number of towns in Maine. In his 1946 article, Dow identified the following towns. It is possible more have been added during the past half century. An updated list will be provided if MPS members can supply the information.

Auburn, Augusta, Bangor, Bangor - Brewer Station, Berwick, Brewer, Bridgton, Brooks, Brunswick, Bryant Pond (illustration shown with this article), Buckfield, Bucksport, Burnham, Caribou, Columbia Falls, Cumberland Center, Dover, East North Yarmouth, Ellsworth, Fairfield, Farmington, Fort Fairfield, Foxcroft, Frankfort, Freeport, Gardiner, Gorham, Greene, Hallowell, Harrison, Hebron, Intervale, Lincolnville, Livermore Falls, Madison, Mechanic Falls, Naples, Norridgewock, North Berwick, Oakland, Oxford, Phillips, Portland, Portland - South Portland Station, Portland - Woodford Station, Presque Isle, Richmond, Sabattus, Saco, Searsport, Sebago Lake, Solon, South Berwick, South Paris, South Windham, Stockton Springs, Strong, Thomaston, Unity, Waterville, West Buxton, West Paris, Winterport and York Corner.

## KVTC students receive MPS scholarships for studies

The Board of Directors of the Maine Philatelic Society voted last year to award scholarships to students at Kennebec Valley Technical College in appreciation for use of KVTC facilities for board meetings.

Randy Dodge, a first-year student in the Physical Therapy Assistant Program, and Cynthia Standbach, a second-year student in the Industrial Electronics Program, were selected to receive the scholarships for 1995-96.



**It may be a wee bit early, but  
Happy Holidays to all!**

The Maine Philatelist is published quarterly by the Maine Philatelic Society, Inc.

The purpose of the Society, a non-profit Maine corporation, is to promote philately in the Pine Tree State. Membership is open to anyone. Membership applications are available from the Secretary, listed below. Dues are \$5 per year.

A Life Membership is also available.

Contact the Secretary for details.

Articles for publication should be sent to the President/Editor at address below.

**OFFICERS**

*President*

Everett L. Parker (1997)  
 HC 76, Box 32  
 Greenville, ME 04441-9727  
 (207) 695-3163 (Voice and Fax)  
 email - eparker@agate.net

*Vice Presidents*

Robert Turmelle (1997)      Richard Williams (1997)  
 8 Birch Street                      20 Ridge Road  
 Waterville, ME 04901              Waterville, ME 04901

*Secretary*

Bruce Hazelton (1997)  
 P.O. Box 67A  
 Cumberland Center, ME 04021

*Treasurer*

Terry Drummond (1997)  
 P.O. Box 57  
 Bingham, ME 04920

**BOARD OF DIRECTORS**

Richard Warren of Cushing (1998)  
 E. David Muzzy of Westbrook (1998)  
 Ray Gagnon of Lewiston (1998)  
 Jim Foote III of Manchester (1998)  
 Bob Vear of Waterville (1997)  
 Andrew P. Ferretti of Bingham (1997)

**PUBLISHING SCHEDULE**

The Maine Philatelist is distributed to members in January, April, July and October of each year. Below is a list of deadlines for each issue and the anticipated mailing date. While deadline for copy (articles) is firm, the anticipated mailing date is just that -- a "best guess" of mailing.

ISSUE COVER DATE	DEADLINE FOR COPY	JOURNAL TO PRINTER	ANTICIPATED MAILING DATE
January	Dec. 15	Dec. 30	Jan. 15
April	March 15	March 30	April 15
July	June 15	June 30	July 15
October	Sept. 15	Sept. 30	Oct. 15

**MUDPEX set for April 26 at Fairfield's KVTC campus**

It's not too early to mark your 1997 calendars on April 26. That's the day the Maine Philatelic Society's MUDPEX show and auction will be held on the campus of Kennebec Valley Technical College in Fairfield.

The show date was set by the MPS Board of Directors during their October 5 meeting. The show will be a week in advance of the New England show at Boxborough, Massachusetts. Work is already under way on a special cachet for the show and possibly expanding exhibits.

As always, a popular silent and oral auction will be held, and there will be a gathering of dealers. More information will be announced before the event.

**And... don't forget the fall show this Saturday!**

The fall issue of *The Maine Philatelist* should reach members in advance of the Waterville Stamp Club show this Saturday (October 19). The show will take place at the Cater Hall at KVTC from 9 a.m. to 5 p.m. There will be a show postmark available for those attending the event.

This MAIPEX show is always well attended as Pine Tree State collectors stock up on philatelic purchases for the long winter ahead. There will be a silent and oral auction as well as featuring a number of dealers.

For last minute information, contact Richard Williams at 872-5107.

**Other New England shows of interest...**

**October 20, 1996**

The Greater Nashua Stamp Show, Holiday Inn, Route 3, Exit 4, Nashua, New Hampshire. Sponsored by Pine Tree Stamps, 9:30 a.m. - 4 p.m., includes dealer bourse. Contact Pine Tree Stamps, 1315 Main St., Gray, ME 04039 (telephone 657-6205).

**October 26-27, 1996**

WALPEX '96, Lexington Armory, 459 Bedford St., Lexington, Massachusetts (Exit 31 off Interstate 95 and Route 128), 10 a.m. - 5 p.m. Saturday, 10 a.m. - 4 p.m. Sunday. Sponsored by the Waltham Stamp Club. There will be a dealer's bourse and show postmark. For additional information, contact Jim Warner, 25 Riverdale Road, Wellesley, MA 02181 or call (617) 237-1390.

**November 2, 1996**

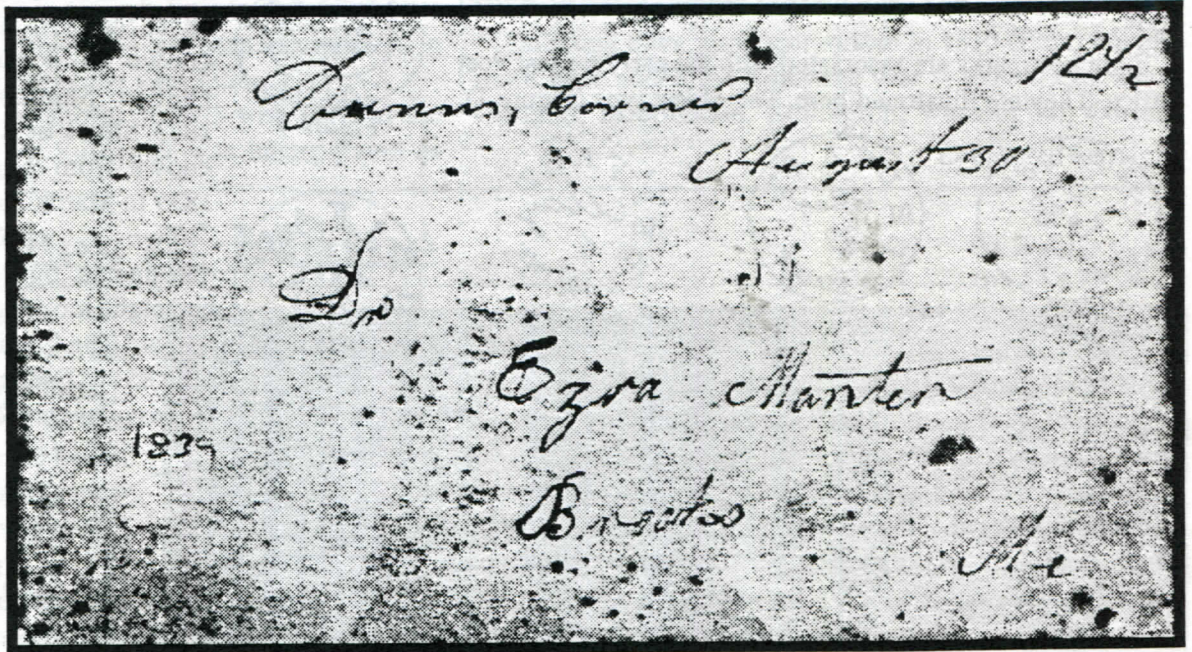
The York County Stamp Club Stamp Show, Elk's Club, Route 1, Saco, 10 a.m. - 5 p.m. The location is opposite Funtown, U.S.A.

# Unique cover from Dunn's Corner at Mount Vernon

Bruce Hazelton, MPS Secretary and a leading Maine philatelist, has forwarded a copy of a unique cover (at least so far) from Dunn's Corner at Mount Vernon. The cover was sent on December 17, 1832 from Dunn's Corner (see inscription at top center of the cover) to Brooks.

Can anyone provide additional information about Dunn's Corner at Mount Vernon? If anyone cares to research the cover and provide additional information, either about Dunn's Corner or the addressee, we would be glad to publish it in *The Maine Philatelist*.

to do so, one must arm themselves with proper research materials such as Sterling Dow's Maine postal history book and



Are there other unique covers lurking in dealers' stocks or individual collections? Research can provide the answers, but

the Maine Philatelic Society's *The Post Offices of Maine - A Rarity Guide*.

## Philatelists have a friend in the Round Pond postmaster (and he's MPS, too!)

Stephen Culpovich is Member Number 521 of the Maine Philatelic Society. But he's perhaps better known as the postmaster of the Town of Round Pond. In a recent letter, Mr. Culpovich said he wants members to know that they have a friend in Round Pond.

"I just wanted you to know that philatelists have a friend here who is willing to take the time to show and fill orders for current issues, plate blocks and whatever else I may be able to order so that one need not pay more than face value for that part of his or her collection," he said.

Mr. Culpovich said it "may be a bit of a ride for some, but this is a beautiful area and well worth the ride." He also noted that Tuesday, Wednesday and Thursday are perhaps the best days for MPS members and other philatelists to drop by as Monday and Fridays are quite busy.

Oh, and if you can't place Round Pond, it's on the coast in Lincoln County near Bristol.

Stephen Culpovich deserves a big "attaboy" from the Maine Philatelic Society. Plan to stop by and see him when you're in the area!

**October**  
 is  
**Stamp**  
**Collecting**  
**Month**  
**in the U.S.**  
**Are YOU doing**  
**something to**  
**promote the hobby?**

# Those early postmarks of Belfast, Maine

A post office was established in Belfast during the late 1700s. Sterling T. Dow noted the date as being between 1789 and 1797, but Bruce Hazelton established the date as October 1, 1794 (see *The Post Offices of Maine - A Rarity Guide*, 1995).

Eight postmarks are associated with the early Belfast Post Office. They are illustrated here. The oldest type (Figure 1),



Figure 1



Figure 2



Figure 3

dated from March 2, 1820 to December 16, 1821. It is known struck in black. Figure 2 is the second handstamp, recorded from February 4, 1821 to June 25, 1822.

Figure three is a dotted circle date stamp, struck in black, and is known between November 18, 1822 and May 4, 1823. Figure four is an oval cancellation, known from November 11, 1823 to December 5, 1824. Between these dates, the oval postmark was struck in black. Between April 1, 1825 and February 27, 1830, it is known struck in red.

Figure five is a circular date stamp, dating from June 1,

1831 to April 23, 1833. It is struck in red. Figure six also appears struck in red, and dates from May 18, 1834 to November 12, 1835. Struck in green, the mark is known from May 23, 1836 to May 13, 1838. Struck in blue, it is known from August 7, 1838 to September 23, 1843. Struck in black, it is known from August 14, 1839 to March 26, 1841.



Figure 4



Figure 5



Figure 6

Two companion datestamps, figures seven and eight, are struck in black, "3 PAID" and "5 cts." The first is known from December 12, 1851 to December 22, 1853, and the latter from January 28, 1852 to June 12, 1853.



Figure 7



Figure 8

## I WANT YOUR STAMPS!



I'm always seeking new material for my customers. Especially needed are collections and foreign covers. But I buy everything!

No lot is too small! Ship insured mail for my best offer, or visit my shop in the beautiful Moosehead Lake region!

*(I also sell collections, dealer's stocks, etc.)*

*Everything is priced at wholesale for dealer and collector alike.)*

**Everett L. Parker**

HC76, Box 32, Greenville, ME 04441

(207) 695-3163 (FAX & phone) e-mail = eparker@agate.net

## PRECANCELS AND PERFIN ON APPROVAL

- Fast, responsive service
- Low, fair prices
- Friendly help with all questions

If you are looking for Buros, Town and Type by State, general precancels or perfins, drop me a line.

**DICK LAETSCH**  
108 Ashswamp Road  
Scarborough, ME 04074

Final installment of a series

# A primer of early Maine philatelic history

By Richard Williams  
MPS Vice President

A census was taken in 1810 and it was found that the District of Maine contained 228,687 inhabitants. Two years later there were 194 towns of which 154 had been incorporated in the 30 years since the close of the Revolution.

Oxford County was organized in 1805 with Paris as the shiretown. The next year Stillwater was incorporated as

Orono. In the following year, eight towns were incorporated (Montville, Denmark, Porter, Jefferson, Friendship, Hiram, Dixmont and Palmyra). In 1808 three more incorporated towns were added: Pownal, Freeman and New Portland.

Only one town was incorporated in 1810 (Eliot) but nine more were added the following year -- Exeter, Charleston, Garland, Robbinston, Eddington, Washington, Corinth,

*Continued on page 6*

## Post Offices of Maine

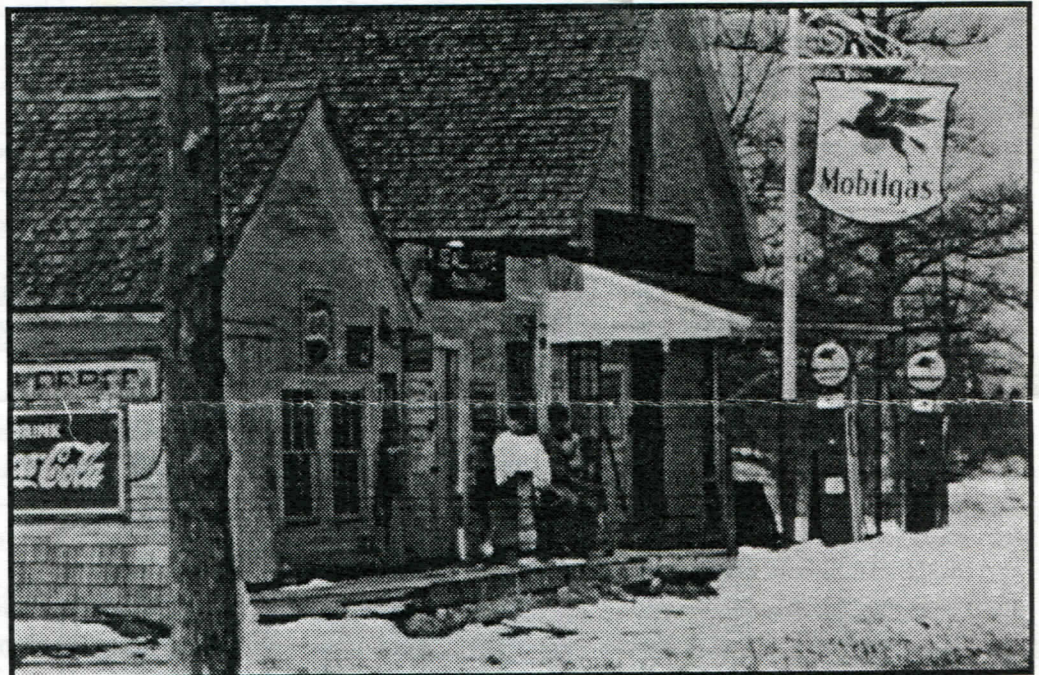
*A regular feature*

By Arnold Krommenohl

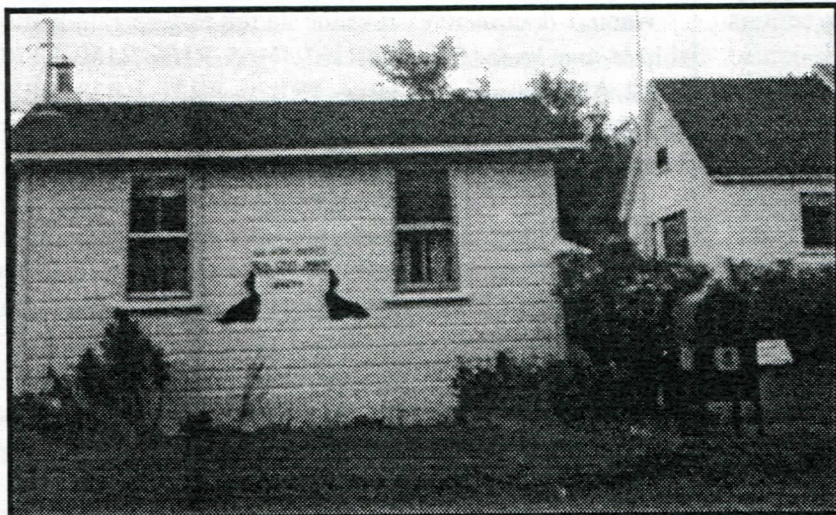
The Seal Cove Post Office has enjoyed a long and colorful history. A route to provide postal service to the western side of Mount Desert Island was created through Somesville to serve Pretty Marsh and Seal Cove.

The post office was established on February 25, 1833 and operated until December 21, 1841. Squire Wm. Heath was the first postmaster. The post office then closed, to reopen on November 11, 1847. It has continued to operate to the present day.

I have included two photographs of the Seal Cove Post Office. The earlier one was taken about 1950 and shows the post office which was then located in Harpers Gen-



*The Seal Cove Post Office was located in Harpers General Store when this photo was taken about 1950.*



*Current Seal Cove Post Office has its own building. This photograph was taken on an overcast day last year.*

eral Store. Notice the Mobilgas sign and gas pumps at the right.

The other photograph was taken on a gloomy, overcast day last year.

*(Arnold Krommenohl is a longtime member of the Maine Philatelic Society and is a resident of Mount Desert. Photographs and write-ups about Maine post offices are solicited for this feature.)*

## A primer of Maine philatelic history

*Continued from page 5*

Carmel and Lubec. In 1812 there were in all, 194 towns including Bingham, Troy, Brewer, Dearborn, Philips, Sebec and Foxcroft which were added in that year. June of that same year saw the beginning of the War of 1812 between Great Britain and the United States. During this conflict, it is said, Maine furnished more men in proportion to her population, than any other state in the Union.

Notwithstanding the drains upon the manpower and financial resources of Maine, nine towns were incorporated in 1813, one being Phippsburg where the earliest attempt at colonization of Maine was located. Others were Newport, Westbrook, Hermon, Sangerville, Searsmont, Belmont, Bloomfield and South Berwick.

Maine was actually invaded by the British in 1814 when they took Eastport. Following this the enemy descended upon Castine which was surrendered after the garrison had destroyed their fortifications. Next came Belfast and then a sortie up the river to Hampden where property was destroyed, vessels burned and provisions seized. Thence the force continued to Bangor where much damage was done. Fourteen vessels were burned at Bangor and Brewer including a small one called *Thinks I To Myself*, whose "letter of marque" as a privateer still exists. The British forces finally contented themselves with sojourning at Castine which became a lively social center.

On the 24th of December in 1814, the treaty of peace was signed, though news of the event did not reach this country for nearly two months. Castine was evacuated in April of 1815 and the District itself set to the task of rehabilitation. Woodstock was incorporated in this year, followed by 12 new towns in 1816: Kingfield, Moscow, Wales, Greenwood, Weld, Guilford, Cherryfield, Dexter, North Hill, Brooks, Corinna and Ripley, bringing to a total of 221 incorporated towns.

It was at this time that the question of a separation of the District of Maine from Massachusetts was first given serious consideration. A vote was taken and an illegal decision to separate was reached by the convention. However, the General Court refused to sustain the action and dissolved the convention.

Again in 1819 the question arose and this time a large majority was in favor of separation and a committee was chosen to draw up a constitution. A fitting close to this history of the District is a quotation from the January message of Governor Brooks to the General Court in 1819.

*"But the time of separation is at hand. Conformably to the memorable act of June 19 last, the 16th day of March next will terminate forever the political unity of Massachusetts proper and the District of Maine; and the District, which is bone of our bone, and flesh of our flesh, will assume her rank as an independent State in the American confederacy."*

## THE CLASSIFIEDS

*Classified advertisements are free to non-dealer members. You may use this space to buy and sell, trade or swap. Dealer members are asked to contact the Editor for advertising details. When sending an advertisement, please mark it for the Classifieds and indicate how many issues you wish it to appear. All ads will appear twice and be removed unless otherwise indicated.*

### WANTED

Wanted: Maine hunting and fishing stamps properly used on licenses. Also always looking for other New England state revenues. Also looking for Old Home Week seals. I have many from New England to trade. Terence Hines, P.O. Box 629, Chappaqua, NY 10514-0629. (4-96)

Will trade Maine post cards for Vermont post cards, pre-1925. Paul Cook, P.O. Box 320, Chester, VT 05143. Telephone (802) 875-2118. (4-96)

Wanted: very fine to fine Maine stampless folded letters and covers. John Ordway, 44 Pine Ledge Road, Bangor, ME 04401-2097. (4-96)

Interested in purchasing foreign covers in quantity. Write first, giving quantity and general complexion and age of material. F.D. Demers, 24 Lawn Avenue, Rockland, ME 04841 (4-96)

Wanted: modern covers: Precancels on junk mail, Express mail, vending machine insurance labels, Special Delivery, postage dues, etc. Rob Washburn, P.O. Box 840, Skowhegan, ME 04976. (4-96)

Wanted: documentary revenue stamps featuring the battleship *Maine*. I need Scott's #R161, R165, R166, R169, R170, R172. Also, proprietary issue, #RB20, RB21, RB33, RB26 and RB28. Write to: Kenneth R. Weeks, P.O. Box 258, Manchester, ME 04351. (4-96)

Wanted: Portland, Greenwood and Albany ad. covers, postal history, postcards. Buy or generous trade for other Maine. Charles Brand, 2031-31st Avenue, San Francisco, CA 94116. (2-97)

I am interested in trading mint or used U.S. stamps for used (preferably) stamps of Luxembourg. If interested, write to E. L. Skarren, RR1, Box 4972, Camden, ME 04843. (3-97)

**ADDENDA AND ERRATA (Continued)**  
**The Post Offices of Maine: A Rarity Guide**

There are addenda and errata to The Maine Philatelic Society's recent book. Additional updates will be published in forthcoming issues of *The Maine Philatelist*. Note under "Explanation of Terms," New Hampshire should read "Maine."

PAGE	POST OFFICE	TOWN	R	COUNTY	ESTABLISHED	DISCONTINUED	NOTES
33	Haymock	Soper Mountain Township					
33	Hebron				15 April 1811		
33	Higgins Beach Rur. Sta. Scarborough						
35	Move Houlton Air Force Base Station to Page 1 and change to Air Base Sta., Houlton				Change established to 10 April 1943		
35	Howe's Corner		2				
36	Isle of Springs Rur. Sta., Boothbay	Boothbay Harbor	1			?	Add changed to Isle of Springs CPO, Boothbay
36	Add: Isle of Springs CPO, Boothbay	Boothbay Harbor	0	Lincoln	?	Operating	Formerly Isle of Springs Sta., Boothbay
37	Kennebago		9				
37	Kennebunk (1)						Delete note
38	Knox (3)						21 Aug, 24 Aug, 31 Aug
38	Knox (3) (Second line)		9				1901 postmarks seen
38	Knox Center						Note after third listing should read "Formerly Knox (2)" not (1)
39	Lambert Lake					(Second listing) Sept. 1985	
39	Lambert Lake CPO	Vanceboro			Sept. 1985		
40	Add: Lewiston Sta. No. 1	Lewiston	6	And.	* 6 Nov. 1924 EKU	?	
40	Lewiston Sta. No. 3	Lewiston	6	And.	* 25 Nov. 1933 EKU	?	
40	Lewiston Sta. No. 4	Lewiston	6	And.	?	Operating	
40	Lewiston Sta. No. 5	Lewiston	6	And.	* 14 Jan. 1939 EKU	?	
41	Lisbon Center (2)		1			1992	
41	Littlejohn Island (all one word)						
41	Little Deer Isle						
					* EKU means "Earliest Known Use. LKU means Latest Known Use		

## President's Message

By Everett L. Parker

While interest in the Maine Philatelic Society continues to increase, there is a definite need for more articles about Maine philately. I find it hard to believe that someone out there isn't doing research into some facet of postal history of the Pine Tree State. Why not share it with your fellow members? Your editor is willing to work with anyone who might be shy about writing an article. It's not that difficult and we will all benefit from the knowledge you are building.

By the same token, when writing, please provide as much information about a subject as possible. Sending a photocopy of a cover with eight or ten words of information is not sufficient. That means I have to try to find enough information to write up the subject. And usually the person submitting the information knows far more than I about it. So please take the time to help me help you.

And a quick word about photocopies -- wherever possible, I like to produce halftone images for the journal in my office. But I don't want to be responsible for valuable items. So if you're close to a photocopier, a clean, crisp copy will usually work. Just remember that in reproduction, details are lost. If you send me a poor quality photocopy, it's not going to look better "in print." Thanks a lot for your continued interest.

Maine Philatelic Society  
HC 76, Box 32  
Greenville, ME 04441-9727

## Are YOU helping the MPS grow?

The Maine Philatelic Society currently has well over 200 members, but there's still a lot of room for growth. If we expect to maintain a newsletter and other benefits of MPS membership, we must have more members to share the cost. The only other alternative would be to raise dues, and no one wants to see that. Of course, where else could you receive four newsletters a year for \$5.00?

In order to grow, we need more members. If YOU know of a fellow philatelist who isn't a member, encourage the person to join (or sponsor them yourself). The Board of Directors is dedicated to growth, and various methods will be used to achieve that end.

Firstly, we will continue to purchase the American Philatelic Society Maine mailing list. Once a year, we will do a mass mailing to all APS members in the state in an attempt to attract more members. An officer will scan the new applicants of the APS monthly and write a letter to each Maine applicant to encourage that person to join MPS.

We will look into establishing an MPS home page on the Internet. There are thousands of collectors connected to the Internet and we could pick up more members that way.

But most importantly, what are YOU doing to bring more people to the organization?



**IMPORTANT NOTICE:**  
If (6-96) appears after your name on the mailing label, this is YOUR LAST ISSUE!  
You must renew today!