



The Maine Philatelist

Vol. 29, No. 4

April 1997

Whole No. 107

MPS celebrates its 70th anniversary!

The Maine Philatelic Society is celebrating its 70th birthday this year, an epoch many similar organizations never reach! And it's time to celebrate!

What was to become the Maine Philatelic Society was formed on June 25, 1927 when representatives of four stamp clubs met at Augusta and organized the Maine Association of Philatelic Clubs. In about 1940, the name was changed to the Maine Philatelic Society, and thus it remains today.

It's interesting to note that this federation of local clubs was the first statewide organization of stamp clubs in the country. The charter members of the federation were the Collectors' Club of Portland, the Androscoggin Stamp Club of Auburn, the Kennebec Philatelic Club of Waterville and the Penobscot Collectors' Club of Bangor.

For many years, society activities were mainly confined to a spring and fall meeting combined with a one-day exhibi-

MPS annual MUDPEX event set for April 19

It's almost time for the Maine Philatelic Society's annual celebration of spring known as MUDPEX! The date is April 19 and the event will be held, as usual, in Frye Auditorium on the campus of Kennebec Valley Technical College (KVTC).

One of the highlights of this year's event will be the second annual "MUDPEX Challenge," featuring competitive exhibits from Maine stamp clubs (see article elsewhere).

MUDPEX will be open to the public from 9 a.m. to 4 p.m., and exhibits of postage stamps and postal history will be available for viewing. Collectors may also participate in a silent and oral auction. Literally thousands of auction lots will be laid out on tables for the silent auction. The oral auction will be held during the afternoon.

Stamp dealers from throughout New England and eastern Canada will be in attendance to tend to collectors' needs. Refreshments also will be available.

KVTC is located at Exit 35 on Interstate 95 in Fairfield, and is visible from the interstate.

tion, bourse and stamp auction. On several occasions, newsletters were authorized and distributed to members and friends, but with the exception of this journal, none had a very long life. The location of the semiannual meeting depended upon which member volunteered to handle the details of the occasion! Prior to 1938 meetings were often held at Hallowell. Augusta and Portland were also popular meeting places.

In May 1967, the Franklin County Stamp Club hosted the spring meeting at Wilton and this was the first use of the popular MAIPEX. During the 1960s and into the 1970s there was a revitalization of the Maine Philatelic Society, with many new faces taking part. In 1968 it was decided the parent organization would sponsor the spring show -- now known as MUDPEX -- rather than asking local clubs to do it. It was also during this time that monthly MPS board meetings were held, a tradition that holds to this day!

The current officers of the MPS are looking forward to celebrating this anniversary, while at the same time taking time to look back on the history of the organization. We will be discussing possible activities during our monthly meetings at KVTC and at MUDPEX. Join with us. Offer your suggestions in a letter to the president or other officers, or chat with us at the MPS table at MUDPEX!

DUES TIME AGAIN!

If it's spring (at least in some parts of Maine) then it must be dues renewal time. Maine Philatelic Society memberships run from July 1 through June 30 of each year. If the date to the right of your name on the mailing label reads (6-97) then it's time to renew. Dues are only \$5.00 a year, and you may renew for more than one year at a time, as many do. Renew today by sending a check or money order, made out to the Maine Philatelic Society, to:

Mr. Bruce Hazelton
MPS Secretary
P.O. Box 67A

Cumberland Center, ME 04021

YOU MAY RENEW AT THE MPS TABLE AT MUDPEX!

The Maine Philatelist is published quarterly by the Maine Philatelic Society, Inc.

The purpose of the Society, a non-profit Maine corporation, is to promote philately in the Pine Tree State. Membership is open to anyone. Membership applications are available from the Secretary, listed below. Dues are \$5 per year.

A Life Membership is also available.

Contact the Secretary for details.

Articles for publication should be sent to the President/Editor at address below.

OFFICERS

President

Everett L. Parker (1997)

HC 76, Box 32

Greenville, ME 04441-9727

(207) 695-3163 (Voice and Fax)

email - eparker@agate.net

Vice Presidents

Robert Turmelle (1997) Richard Williams (1997)
 8 Birch Street 20 Ridge Road
 Waterville, ME 04901 Waterville, ME 04901

Secretary

Bruce Hazelton (1997)

P.O. Box 67A

Cumberland Center, ME 04021

Treasurer

Terry Drummond (1997)

P.O. Box 57

Bingham, ME 04920

BOARD OF DIRECTORS

Richard Warren of Cushing (1998)
 E. David Muzzy of Westbrook (1998)
 Ray Gagnon of Lewiston (1998)
 Jim Foote III of Manchester (1998)
 Bob Vear of Waterville (1997)
 Andrew P. Ferretti of Bingham (1997)

PUBLISHING SCHEDULE

The Maine Philatelist is distributed to members in January, April, July and October of each year. Below is a list of deadlines for each issue and the anticipated mailing date. While deadline for copy (articles) is firm, the anticipated mailing date is just that -- a "best guess" of mailing.

ISSUE COVER DATE	DEADLINE FOR COPY	JOURNAL TO PRINTER	ANTICIPATED MAILING DATE
January	Dec. 15	Dec. 30	Jan. 15
April	March 15	March 30	April 15
July	June 15	June 30	July 15
October	Sept. 15	Sept. 30	Oct. 15

Maine stamp club meetings



Stamp clubs in Maine are invited to become members of the Maine Philatelic Society. We will publish, free of charge, meeting information and locations.

PORTLAND STAMP CLUB

The club meets on the second Wednesday of each month at the Maine Veterans Home, 290 U.S. Route 1, Scarborough. The meeting starts at 6:30 p.m. and usually ends about 8:30 p.m. Nonmembers are invited to attend.

WATERVILLE STAMP CLUB

The club meets on the first and third Friday from September to May and on the third Friday only during June, July and August. Meetings are from 6:30 to 9 p.m. at the Kennebec Valley Technical College (KVTC) on Western Avenue in Fairfield (Exit 35 of Interstate 95). For information, call 872-5107. Nonmembers are invited to attend.

BELFAST STAMP CLUB

The club meets on the third Thursday of the month at noon. The location changes each month. For information, call Dick Gerry, president, at 866-3583. The group will meet in Rockport on April 17 and Stockton Springs on May 15.

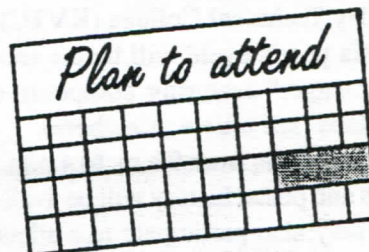
Is YOUR club listed here? Become a member and receive a FREE listing!

New England stamp shows of interest...

April 12, 1997: Stamp and Coin Show, Knights of Columbus Hall, Columbus Avenue, Rochester, New Hampshire, 9 a.m. to 5 p.m. Free admission, 10 dealers on hand, exhibits, kid's table. Sponsored by Great Bay Stamp Club.

April 13, 1997: Second Sunday Stamp & Coin Show, Econo Lodge, 95 Main St., (Interstate 495 and Route 38) Tewksbury, Mass. Free admission. Contact Monty Gibson, (508) 640-0017 or FAX (508) 640-9988.

April 25-27: Philatelic Chow '97, sponsored by the Northeast Federation of Stamp Clubs, Holiday Inn, Route 111, Exit 28 off I-495. Bourse, programs. (Your president will be a featured speaker, discussing Pitcairn Island 1938 radio covers at 1 p.m. on Saturday in the Deck Room).



An interesting anecdote of Maine postal history

By Dr. Richard W. (Dick) Gerry
Of Orono

The accompanying cover has an interesting story. It will be immediately apparent that the cover has a bisect of a two cent stamp current in the 1920s. I have been looking for the cover which I mailed from Strickland, Maine on April 15, 1927, and I finally came across it a few days ago while looking for something else.

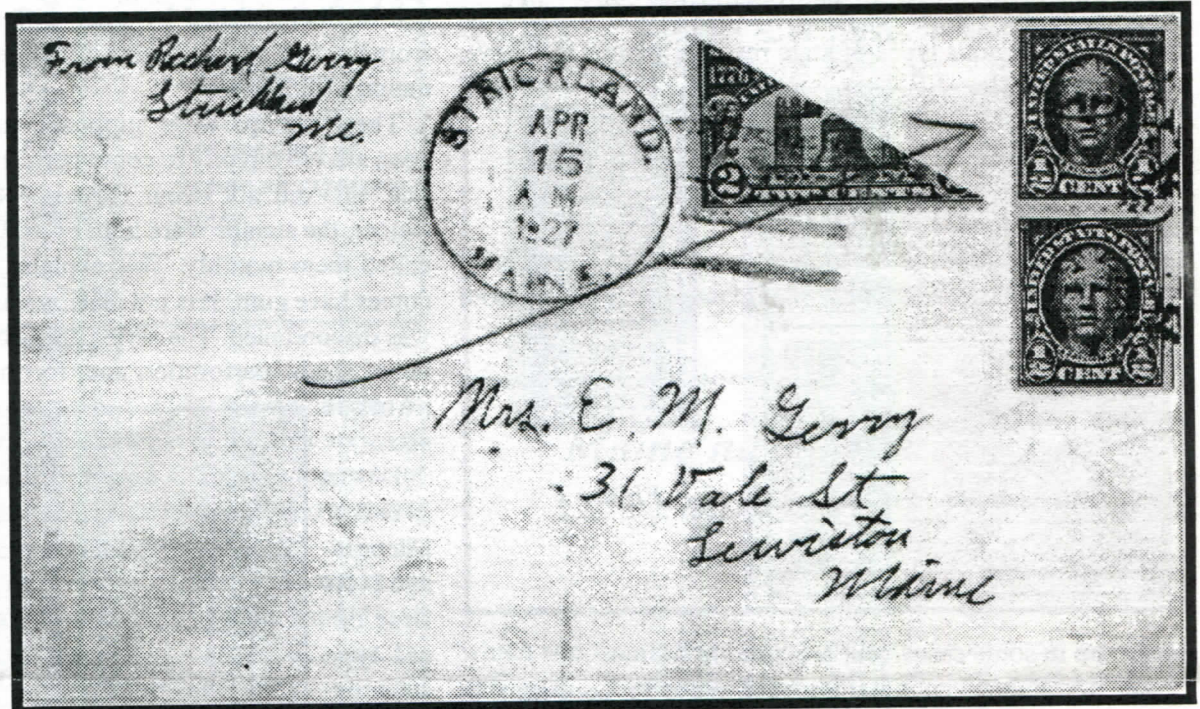
The cover was on the last page of a 45 page exhibit I made up several years ago titled "Postal Systems and Services." The heading on the page was "Bisects." At the time I mailed the

cover, I was a good friend of the Strickland postmaster, Nate Sawtell. Nate knew that I was a stamp collector as he had helped me in various ways in the past, so I told him about the bisects I had seen on foreign covers. I explained to him (he may have known) that occasionally stamps of lower denominations were unavailable in smaller post offices, so stamps of higher denominations were bisected diagonally, horizontally or vertically to be used as two separate stamps, each half being one half the value of the whole stamp.

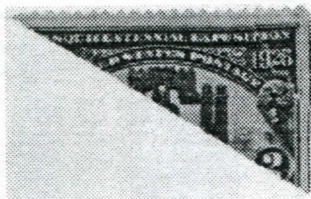
Most philatelists recognize such specimens as authentic only if "tied on," that is, where the cancellation reaches beyond the stamp to the cover or attached paper.

Anyway, the postmaster agreed to go along with the idea; as he put it, "No harm in trying." I had some two cent 1926 Sesquicentennial Exposition stamps so we used one to bisect diagonally making each half into a one cent stamp. I used

one of the halves and kept the other as "proof." Then, to "spice things up" a bit, I used two one half cent stamps to make up the two cents needed for postage at that time. I guess the post-



An interesting cover from Strickland, Maine! (Thanks to Dr. Richard W. Gerry of Orono)



The "other half" of the two-cent bisect shown on the accompanying cover.

master felt it was necessary to pencil in an arrow.

The letter went through the mail with no problem and I had a cover with a bisected stamp! In my opinion, this is an unusual and different postal item. What do you think?

(EDITOR'S NOTE: According to Bruce Hazelton's *The Post Offices of Maine, A Rarity Guide, the Strickland's Ferry Post Office was originally opened in East Livermore on December 10, 1853, where it operated until July 12, 1894 when the name was changed to Strickland. It operated as Strickland until it was discontinued on December 31, 1944.*

Are YOU on the Internet?

In order to offer more rapid communications, we will publish e-mail addresses of Maine Philatelic Society members and officers ONLY if they wish to be listed. Please e-mail your address to the president to be included here. If you're not on the Web, look into it -- there are hundreds of sites worldwide to explore!

Everett L. Parker = eparker@agate.net

Richard Warren = dickw@midcoast.com

Dave Muzzy = edmuzzy@ime.net

Anyone interested in designing a home page for the Maine Philatelic Society?

Maine revenue stamps can be stunningly beautiful

By Terence Hines
of Chappaqua, New York

While every state has issued state revenue stamps at one time or another, the collection of these stamps is still one of the more neglected areas of philately. This article will briefly describe the various types of state revenue stamps that have

96mm square.

Sometime after 1934, the malt liquor stamps were reprinted, with the exception of the one cent value. This reprinted series can be distinguished by small differences from the first set in the size of the denomination inscription.



Figure 3

These stamps were supposed to have been affixed directly to containers. In practice, this did not occur (Pruess, 1974a).

Rather, the stamps were kept by wholesale dealers who cancelled them monthly. This explains the fact that most used copies have gum. It is not clear when the use of these stamps was discontinued. The series does contain interesting varieties of shade, perforation and, for the malt liquor set, serial number size.

In 1937

Maine issued its first decal type state revenue. As those who recall building model

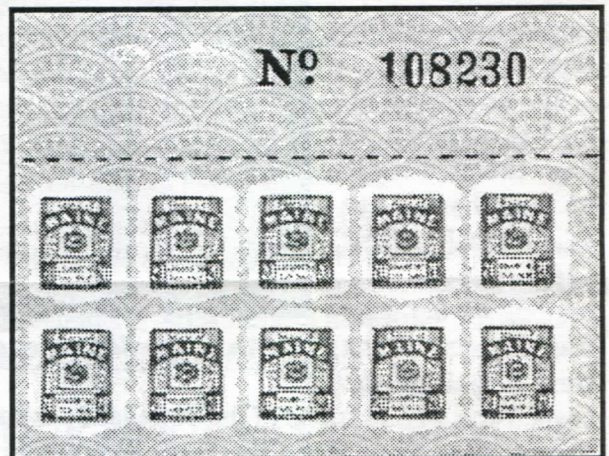


Figure 4

airplanes or ships will know, a decal is soaked off in water and then affixed. In the case of Maine's first decals, they were affixed to bottles of liquor. These liquor seals do not bear any denomination, but do

prove that the liquor was sold legally. Many states have issued this sort of seal and they are collected

along with state revenues.

Maine has issued five different liquor seals. One, the 1941 blue (Figure 3) is especially lovely. It was engraved by the American Bank Note Company and shows the Maine State Seal. It is one of a series of stunningly beautiful state revenue

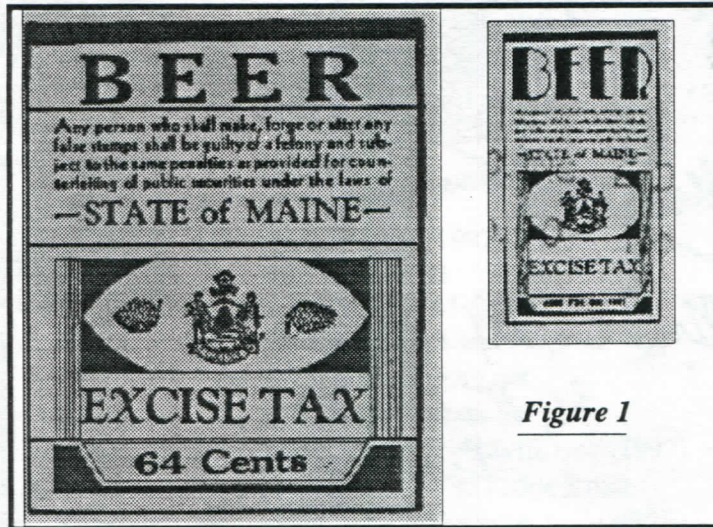


Figure 1

been, and in some cases, still are, used in Maine.

The first state revenue stamps were issued by California in 1858. Maine didn't get into the act until 1934, when it issued

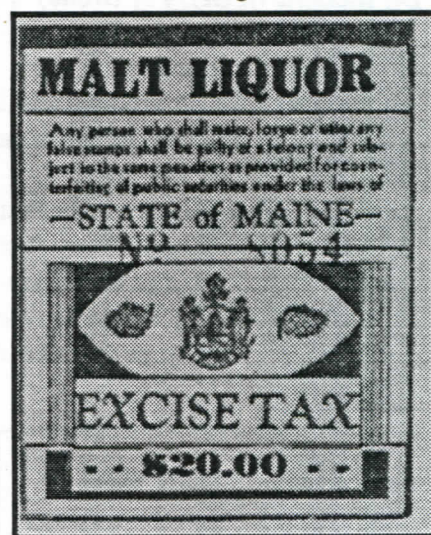


Figure 2

a set of beer tax stamps. The set contained five denominations: 1 pint, blue on blue paper; 32 ounces, green on salmon; 32 cents green on blue; 64 cents yellow on blue (also known in orange) and \$1.24 orange on blue. The two "taxpaid" values were smaller than the others. Figure 1 shows examples of both sizes. The one pint stamp is quite com-

mon, but is known with a variety of color shades and plate varieties (Pruess, 1974b) that make this an interesting stamp for the specialist.

Later in 1934 the beer stamps were replaced with a series inscribed "MALT LIQUOR." This new series contained nine values. Shown in Figure 2 is a copy of the \$20 stamp from this series. Seven of the nine stamps were issued in this size. The lowest value, a one cent stamp, was smaller (about 41 x 44mm). The highest value, a \$100 stamp, measures about

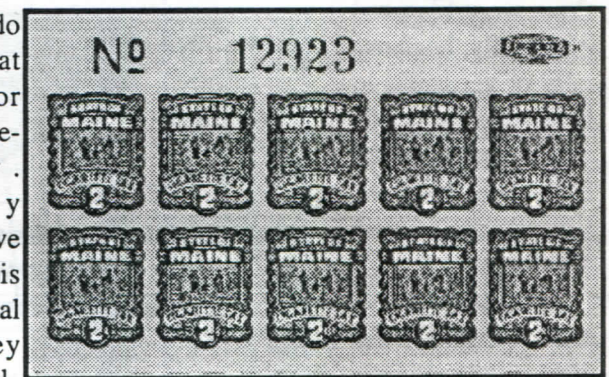
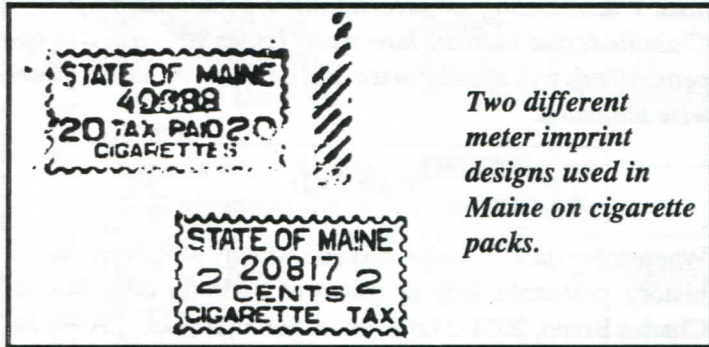


Figure 4b

decals produced for various states by the ABNC during this period. Other decals in the series show state maps, other states' seals, and capitol buildings. (Hines, 1995).

In 1941 Maine joined numerous other states in taxing cigarettes. The first tax rate was 2.5 mills per cigarette, or five

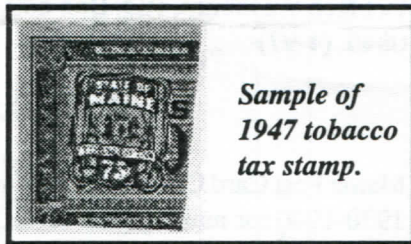


Two different meter imprint designs used in Maine on cigarette packs.

Figure 5

cents per pack of 20. This tax was paid by affixing decals to individual cigarette packs. An example of the first series of cigarette tax decals is shown in Figure 4. This is a top pane of 10 of the two cent denomination. Decals were printed in sheets of 100, divided into 10 of these panes of 10.

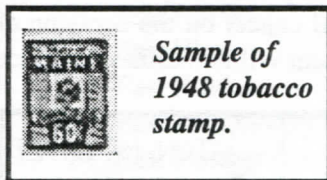
I have not been to Maine for several years, so do not know what sort of cigarette decals are currently being used. Upon my last visit, however, decals like those also shown in Figure 4 were in use. This tax paid decal design exists in several different colors. The color is changed when the tax rate increases.



Sample of 1947 tobacco tax stamp.

Figure 6

Decals were not the only way the cigarette tax was paid. Obviously, the application of decals would be too labor-intensive for large wholesalers. They used, instead of decals, Pitney-Bowes metering machines which applied a meter imprint directly to the cellophane on the bottom of the cigarette pack. Shown in Figure 5 are the two different meter imprint designs that have been used in Maine. The two cent dates from 1941. It is purple and a four cent purple imprint of the same design is also known. The 20 cigarette tax paid design is, to my knowledge, still in use. It has appeared in various colors over the years as the tax rates have changed.



Sample of 1948 tobacco stamp.

Figure 7

In 1947 all tobacco products were taxed. This, of course, required the issuance of another set of decals, this time inscribed "TOBACCO TAX." The first set contained 17 values, all of the same design (Figure 6) and all in blue and black.

In 1948 a new set appeared (Figure 7) with 19 denominations. Each denomination was printed in a different color.

For reasons that are not clear, around 1949 Pitney-Bowes

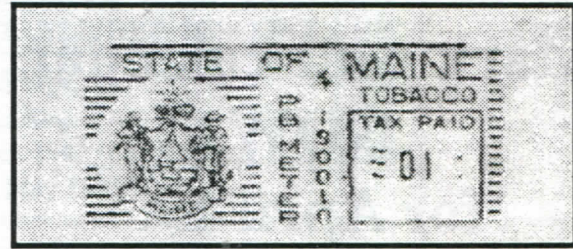


Figure 8

metering machines were briefly used to show payment of the tobacco tax. These machines produced imprints on paper tape

Maine has produced some very attractive revenue stamps

which was then affixed to the package. An example is shown in Figure 8. Three different color varieties are known. All are scarce.

Maine issued its one and only bedding stamp in 1953. This one cent green stamp was used on those "do not remove" bedding tags and certified that the bedding met state standards. The black number at the base of the stamp (Figure 9) is the registry number of the firm using the stamps. Whether these stamps are still in use I do not know.

Maine's only bedding stamp. The black number at the base of the stamp is the registry number.



Figure 9

Thanks for updated information about post offices in Maine

As you have seen in *The Maine Philatelist* over the past year, I have received help from many in correcting or adding to my book *The Post Offices of Maine: A Rarity Guide*. I cannot name all of you, but I do want to spotlight two members who have spent hours researching and listing corrections and additions: John Bache-Wiig of Nogales, Arizona and Kelvin Kindahl of Easthampton, Massachusetts. Thanks!

-- Bruce Hazelton

DON'T FORGET!

Mark your calendar
NOW
 for April 19.
 That's the date for the
**Maine Philatelic
 Society's
 MUDPEX
 extravaganza!**

9 a.m. to 5 p.m.
 at the KVTC campus,
 Exit 35 off Interstate 95
 in Fairfield.

Many stamp dealers serving
 your philatelic needs!
 Silent bid auction!
 Live auction!
 Exhibits!
 The MUDPEX Challenge!
 So much to see and do!
 Refreshments available.

See ya there!
Visit the MPS table!

THE CLASSIFIEDS

Classified advertisements are free to non-dealer members. You may use this space to buy and sell, trade or swap. Dealer members are asked to contact the Editor for advertising details. When sending an advertisement, please mark it for the Classifieds and indicate how many issues you wish it to appear. All ads will appear twice and be removed unless otherwise indicated.

WANTED

Wanted: Portland, Greenwood and Albany ad. covers, postal history, postcards. Buy or generous trade for other Maine. Charles Brand, 2031-31st Avenue, San Francisco, CA 94116. (2-97)

I am interested in trading mint or used U.S. stamps for used (preferably) stamps of Luxembourg. If interested, write to E. L. Skarren, RR1, Box 4972, Camden, ME 04843. (3-97)

Wanted: modern (since 1970) U.S. covers. I am especially looking for junk mail transportation coil covers, Express mail, postage dues, insured mail, Certified mail, etc. Contact Rob Washburn, P.O. Box 840, Skowhegan, ME 04976-0840. (4-97)

FOR SALE

Maine Post Card Collectors: 200 negatives from Art Vu Co., 1930-1940 for making post cards. \$400.00 or trade for Vermont postal history. Paul Cook, P.O. Box 320, Chester, VT 05143. Telephone (802) 875-2118. (3-97)

Special inauguration cancel

Members of the Waterville Stamp Club helped the Clinton Historical Society with a special cancel on the occasion of the second inauguration of President William Clinton and Vice President Al

Gore on Jan. 20, 1997. Coleen Bean of the historical society designed the handstamp.



Hundreds of covers were cancelled through the help of Gerry and Al Brochu, Richard Williams (our vice president) and Janos Urmos. Richard said the number of people requesting the special handstamp cancel far exceeded what was expected.

ADDENDA AND ERRATA (Continued)
The Post Offices of Maine: A Rarity Guide

There are addenda and errata to The Maine Philatelic Society's recent book. Additional updates will be published in forthcoming issues of *The Maine Philatelist*. Note under "Explanation of Terms," New Hampshire should read "Maine."

PG	POST OFFICE	TOWN	R	COUNTY	ESTABLISHED	DISCONTINUED	NOTES
1	Air Base Station	Bangor			15 Sept. 1941		
2	Appleton Rur. Sta.	Union			22 Aug. 1960	15 Jan. 1969	
2	Army Air Base Sta.	Presque Is.	7	Aroostook	1 Oct. 1942 (EKU)	30 April 1946 (LKU)	
2	Atlantic				May 1955		
2	Augusta Water St. Sta.	DELETE					
3	Bald Mountain Rur. Br.	Oquossoc	5			30 April 1968	
3	Bangor Maine Air Base	DELETE					
4	Bath Sta. No. 1	Bath	6	Sagadahoc	8 May 1934 (EKU)	?	
4	Bayville					June 1995	Summer office
4	Bayville Rur. Sta.						Summer office
5	Bayville CPO				June 1995		Non-personnel unit
8	ADD Bremen (2)	Bremen	0	Lincoln	1 July 1996	?	Formerly Medomak
9	Brunswick Maine Navy 10082 Sta. <i>= Navy 10082 Sta Brunswick</i>				20 Aug. 1943	?	Changed to Naval Air Station. MOU Brunswick (AKA MOU No. 1)
9	Burketville		3			?	
11	ADD Cape Elizabeth Br. Portland	Cape Elizabeth	0	Cumber- land	1 Sept. 1964	Operating	Formerly Portland Br. No. 15
11	Cape Porpoise					26 Feb. 1965	
12	Center Lebanon	"Delete one "N"					
15	Cumberland Mills Sta.					30 June 1981	
16	Dark Harbor						Dark Harbor -- when?
18	Dow Air Force Base Sta.				6 April 1959 (EKU)		
19	Eagle Lake Mills		7				
19	East Brownfield		1				
20	East Dixfield			Oxford Franklin	25 April 1829	Operating	Changed county? <i>Yes</i>
20	East Eddington		1			24 Jan. 1996	Changed to Eddington (2) P & DC (Processing & Distribution Center)
20	Eastern Maine						
20	East Fairfield					3 March 1904	
21	East Hiram		2				
21	East Holden		1			Fall 1995	Changed to Holden (1)
23	Eastport Quoddy Sta.	DELETE					
23	East Sumner Rural Br.		1			31 Dec. 1973	
24	ADD Eddington (2)	Eddington	0	Penobscot	24 Jan. 1996	Operating	Formerly E. Eddington
24	ADD Edgecomb (2)	Edgecomb	0	Lincoln	1 Jan. 1992	Operating	Formerly N. Edgecomb
25	Estcourt Station	T20 R11	1	Aroostook		24 Sept. 1995	
26	Fairmont Sta.	Bangor	0	Penobscot	1992	Operating	Same as Bangor Sta. No. 3
26	Falmouth Br.		1	Cumberland	30 Sept. 1901	15 Feb. 1980	Formerly Falmouth (2)
			0	Cumberland	Re: 13 Jan. 1983	Operating	
27	Five Points Sta.	Biddeford			1990		
27	Forest City CPO	Brookton					Non-personnel unit
28	Franklin Road (not Roads)						

* EKU means "Earliest Known Use. LKU means Latest Known Use

President's Message

By Everett L. Parker

As we begin another spring in Maine, it will soon be time to put aside the albums and stockbooks and tongs for another summer. But you know, summer isn't the "dead" time for philatelists that it was at one time. More and more activities are held during the summer months, and that's good for the hobby. Even if you do focus more on out-of-doors activities during the warm weather, the officers of The Maine Philatelic Society continue to work hard during all 12 months to make this one of the best state organizations around!

The good news is that we continue to grow, although not at the fast pace we did two years ago. A year ago this month, our paid membership stood at 180. If my figures are correct, a year later we have 220 members. That's an increase of 40 members from the same time last year.

And now it's time to renew our dues for another year. As you know, our fiscal year runs from July 1 through June 30. Be sure to check the mailing label below to see if it's time to renew. If the label shows (6-97) next to your name, send a check today so you won't miss anything!

**The next
Board of Directors meeting
of the Maine Philatelic Society
will be on Saturday, April 12,
beginning at 10 a.m.
at the Kennebec Valley
Technical College (KVTC)
in Fairfield.
Meetings are open to the public
and members are encouraged to
attend and offer their input to
the operation of the
Maine Philatelic Society.**

Maine Philatelic Society
HC 76, Box 32
Greenville, ME 04441-9727



TO:

Kindahl, Mr. Kelvin #549 (6-97)
29 Clark Street
East Hampton, MA 01027-2329