



The Maine Philatelist

Vol. 33, No. 4

April 2001

Whole No. 123

Buy stamps by mail ... help save Maine island post offices!

It's perhaps a novel concept, but will it work? With the U.S. Postal Service threatening cutbacks in Saturday mail delivery and construction of new postal facilities in jeopardy, a grass-roots effort to save Maine's island post offices might have a chance.

An advertisement appearing in various Maine newspapers during the past several weeks has encouraged people to purchase their postage stamps from small island post offices. "Small island post offices are constantly in danger of being closed down by the U.S. Postal Service because their volume is so small. Selling stamps by mail is one way these important community institutions can keep up their volume and stay in business to serve the island communities," the advertisement stated.

Masonic cancel is unusual

By Roger D. Curran

One of the interesting categories of 19th century U.S. cancellations is that involving fraternal organization designs. Those found are primarily of Masonic origin but also include Odd Fellows, Mummers, etc.

Being generally unfamiliar with the symbols used by these organizations, it has always been a question for me of just what to look for in terms of fraternal designs. I wonder if a number of fraternal cancellations have gone unrecognized by most cancellation collectors.

Continued on page 3

The island post offices listed included Cliff Island, Long Island, Chebeague, North Haven, Swan's Island, Cranberry Isles, Islesford, Frenchboro, Isleboro, Monhegan, Matinicus and Isle au Haut.

The advertisement included an order form where a person could send a check for \$34.00 for a roll of 100 stamps; \$6.80 for a booklet of 20 stamps; \$170.00 for a roll of 500 stamps; and \$10.50 for 50 20¢ stamped postal cards.

Although the advertisement doesn't specifically say so, an order should be sent to the Postmaster of the island of choice. The advertisement stipulates that a person should not send cash but rather check or money

order payable to "Postmaster." Orders of \$200 or more will be sent by Certified Mail and must be signed for on delivery, the advertisement adds.

Some might question why merely buying stamps adds to a post office's volume. The answer lies in the convoluted way the postal service determines how busy a postal facility is. The amount of stamps sold and other financial business conducted is the determinant rather than the amount of mail the office processes.

Hence, if a small post office processed thousands of pieces of mail a day, and needed a half dozen people to keep up with the demand, but only sold a small amount of stamps and other items such as money orders, etc., then the post office would not be successful. On the other hand, if it sold lots of stamps but only processed a half dozen pieces of mail, it would be successful.

That's the reason the off-shore post offices, which generally don't sell many stamps, are in need of the income. It seems a more equitable manner of assessing a post office's success would be the volume of mail it processes. But the postal service apparently does not agree that is a fair and equitable way of doing business. ☒

MPS board meeting to discuss Bangor area show Saturday

Members of the Maine Philatelic Society are always encouraged to attend and participate in Board of Directors meetings. A meeting will be held this Saturday (April 21) at Miller's Restaurant in downtown Bangor beginning at 11 a.m., and you are invited to attend. Discussion will center on the feasibility of having a stamp show this summer in the greater Bangor region.

Your input into the matter would be most appreciated. A committee of board members has been meeting with officials of the Penobscot Valley Stamp Club to see how such a show would be presented, where it might be held, and when it could be scheduled. ☒

The Maine Philatelist is published quarterly by the Maine Philatelic Society, Inc.

Website: <http://www.ainop.com/users/max/mps.htm>

The purpose of the Society, a non-profit Maine corporation, is to promote philately in the Pine Tree State. Membership is open to anyone. Membership applications are available from the Secretary, listed below.

Dues are \$5.00 per fiscal year (ending in June).

A Life Membership is also available.

Contact the Secretary for details.

Articles for publication should be sent to the President/Editor at address below.

OFFICERS

President

Everett L. Parker (2001)

HC 76, Box 32

Greenville, ME 04441-9727

(207) 695-3163 (Voice and Fax)

e-mail - eparker@moosehead.net

Vice President

Jim Foote III (2002)

P.O. Box 16

Manchester, ME 04351-0016

Secretary

Bruce Hazelton (2001)

P.O. Box 67A

Cumberland Center, ME 04021

Treasurer

Rick Stambaugh (2002)

16 Elmwood Ct.

N. Berwick, ME 03906

e-mail - rickstambaugh@cybertours.com

BOARD OF DIRECTORS

Richard Warren of Cushing (dickw@midcoast.com) (2002)

Ray Gagnon of Lewiston (2002)

Max L. Lynds of Houlton (max@ainop.com) (2002)

John E. Engle, M.D. of Waterville

(Edward22772@Yahoo.com) (2002)

PUBLISHING SCHEDULE

The Maine Philatelist is distributed to members in January, April, July and October of each year. Below is a list of deadlines for each issue and the anticipated mailing date. While deadline for copy (articles) is firm, the anticipated mailing date is just that -- a "best guess" of mailing.

| ISSUE COVER DATE | DEADLINE FOR COPY | JOURNAL TO PRINTER | ANTICIPATED MAILING DATE |
|------------------|-------------------|--------------------|--------------------------|
| January | Dec. 15 | Dec. 30 | Jan. 15 |
| April | March 15 | March 30 | April 15 |
| July | June 15 | June 30 | July 15 |
| October | Sept. 15 | Sept. 30 | Oct. 15 |

Maine stamp club meetings



Stamp clubs in Maine are invited to become members of the Maine Philatelic Society. We will publish, free of charge, meeting information and locations.

WATERVILLE STAMP CLUB

The club meets on the first and third Friday from September to May and on the third Friday only during June, July and August. Meetings are from 6:30 to 9 p.m. at the Kennebec Valley Technical College (KVTC) on Western Avenue in Fairfield (Exit 35 of Interstate 95). For information, call 872-5107. Nonmembers are invited to attend.

BELFAST STAMP CLUB

The club meets on the third Thursday of the month at noon. The location changes each month. For information, call Dick Gerry, president, at 866-3583.

YORK COUNTY STAMP CLUB

The club meets on the second and fourth Thursday of each month beginning at 7:30 p.m. at the Sanford Masonic Hall, Elm Street, Sanford. Usual events include raffle, auction, presentations, refreshments, and an occasional visit from a stamp dealer. Dues are \$5 per year. For information, contact Secretary Tracey Levasseur, 329 Ross Corner Rd., Shapleigh, ME 04076.

UNION RIVER STAMP CLUB

The Union River Stamp Club meets the first Thursday of each month at the Ellsworth Library, beginning at 7:30 p.m.

Airport dedication covers

Your editor has a short article on airport dedication covers in Maine between 1929 and 1969 that will be printed in an upcoming edition of *The Maine Philatelist*. Illustrations are needed for the article, and it would be most helpful if any member having some of these cacheted covers would send the editor two or three.

While not especially valuable, Maine airport dedication covers are an interesting collecting sideline and offer a look at Maine's aviation history as well. All covers sent for illustration purposes will be promptly returned. If you have a cover you don't want to send by mail, a scanned e-mail attachment (in TIF format, please) or clean photocopy would be acceptable.

Here is a case in point. The Robert A. Siegel auction of January 25, 1972 contained the Milton Greenebaum collection of Masonic cancellations. It was surely one of the finest ever formed. Included in the auction catalogue was Mr. Greenebaum's Masonic Cancellations Classification Chart.

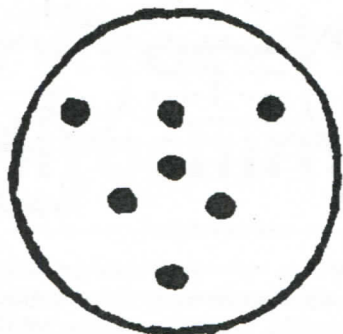


Figure 1: tracing of the dot pattern

It presented 20 classifications including one entitled "Other Masonic Designs." One of the listings in this classification was "7 dots." Lot 19 in the Greenebaum sale was a 3¢ 1861 issue off-cover stamp canceled by seven dots in a circle. This cancel, from North Vassalboro, Maine, is listed in *United States Cancellations 1845-1865*¹ with the tracing shown here in Figure 1. A cover bearing this cancel is also illustrated here.

How many readers would have recognized *that* as a Masonic design? Those of us not familiar with it are in good company, however, because the authors of the above-men-



Figure 2A: dot pattern on stamp

tioned book apparently didn't recognize it as a Masonic cancel. It is listed as a patent cancel. Presumably the authors considered that whatever objects produced the dots were intended to cut into the postage stamp being canceled. Perhaps the stamps examined by the authors did show evidence of this or at least showed indentations associated with the dots that made them think it was a patent

cancel didn't cut into the stamps because, it is assumed, the cutting surfaces quickly became dulled). On the two stamps shown in Figure 2, no cutting or indentation is present.

I have not been successful in learning what "7 dots" represents as a Masonic symbol. As readers will note, the dots form



Figure 2B: dot pattern on stamp

a triangle with another dot roughly in the middle of the design. Additional information about this design or about any other Masonic cancels from North Vassalboro would be welcomed and acknowledged. My address is 20 University Ave., Lewisburg, PA 17837. ☉

BIBLIOGRAPHY

¹ Hubert C. Skinner and Amos Eno, *United States Cancellations 1845-1865*. [APS Handbook Series]. (State College, Pennsylvania: American Philatelic Society, 1980), p. 254.

Is that an outhouse on Maine statehood stamp?

Is there an outhouse on Maine's statehood stamp of 1970? Or is it actually a storage building? In order to get to the bottom of the issue, your editor conducted a deep investigation into the "hole" matter. If you look closely at the Maine statehood stamp, which shows a well-known lighthouse, you'll see a small building at the right which strongly resembles that famous little building with the half moon that some of us remember from childhood.

But in case you're inclined to think this astute publication has reached a new bottom, I want to wipe the slate clean by saying it's more likely a building used to house oil in the "old days." What do you think?

Comprehensive Maine DOANES listing continues

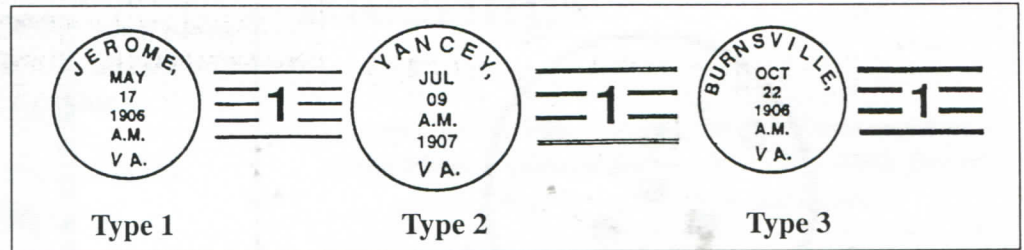
Starting in 1903 and concluding in 1906, the Post Office Department distributed a unique type of rubber handstamp to improve the impression quality of postmarks and cancels. Postal historians now refer to these handstamps as "Doane Cancels" in honor of Edith Doane, who led research into their background and distribution.

Doane cancels are recognizable by a number in the cancel bars. Recent research by Richard Helbock, editor of *La Posta*, revealed a near perfect correlation between the dollar volume of the postmaster's compensation for the year previous to the issue of a Doane cancel and the number appearing in the cancel bars. For example, if a postmaster's compensation was less than \$100, the new cancel contained the numeral "1." When the compensation was between \$100 and \$200, the cancel contained the numeral "2" and so on.

Doanes were issued in different formats that are identified as Types 1, 2 and 3. The numbering of the types is based on their chronological order of

distribution. For example, the five bar Type 1 cancel was issued in 1903 (up to October), the hollow, four bar Type 2 between October 1903 and June 1905, and the solid, four bar from June 1905 to the mid- 1906.

Samples of each type are shown on this page. This is only a brief over-



view of the Doane system. Following is a listing of all known Maine Doanes, provided by Secretary Bruce Hazelton. Corrections should be sent to Mr. Hazelton at P.O. Box 67A, Cumberland Center, ME 04021.

MAINE DOANES

| Post Office | Type | No. | Earliest | Latest | Post Office | Type | No. | Earliest | Latest |
|--------------------|------|-----|---------------|---------------|------------------|------|-----|------------------|-----------------|
| Eagle Lake | 1 | 2 | 11 July 1904 | 9 July 1906 | East Sherman | 2 | 1 | 22 Nov 1904 | 28 Jan 1907 |
| Eagle Lake Mills | 3 | 4 | 18 Dec 1906 | 6 April 1908 | East Stoneham | 3 | 3 | 16 Feb 1907 | 2 Aug 1910 |
| East Bethel | 3 | 2 | 15 Jan 1906 | 19 Nov 1906 | East Sullivan | 2 | 3 | 23 Dec 1905 | 26 Nov 1912 |
| East Boothbay | 3 | 2 | 5 Aug 1909 | | East Surry | 3 | 2 | 5 March 1908 | 13 Jan 1912 |
| East Bowdoinham | 2 | 1 | 5 Aug 1904 | 3 May 1909 | East Turner | 2 | 1 | 26 Dec 1905 | 17 July 1908 |
| Eastbrook | 2 | | 6 Oct 1904 | | East Vassalboro | 3 | 3 | 6 Dec 1905 | 22 Dec 1915 |
| East Bucksport | 3 | 1 | 24 April 1906 | 21 Nov 1911 | East Waldboro | 3 | 1 | '06 18 June 1907 | 9 July 1909 |
| East Dixmont | 2 | | 13 June 1904 | 27 Dec 1904 | East Waterford | 3 | 1 | '06 23 Jan 1908 | 22 Dec 1914 '15 |
| East Dover | 3 | 2 | 23 Sept 1905 | 9 May 1913 | East Winn | 1 | 1 | 8 Jan 1904 | 23 Nov 1912 |
| East Eddington | 3 | 3 | 9 June 1906 | 14 Oct 1911 | East Wilton | 3 | | 4 May 1908 | |
| East Edgecomb | 3 | 2 | 10 Sept 1906 | 31 Aug 1911 | Eaton | 3 | 1 | 30 Jan 1909 | 22 Dec 1912 |
| East Gray | 2 | 2 | 19 Nov 1905 | 23 May 1915 | Eddington | 3 | 2 | 4 April 1906 | 14 Oct 1911 |
| East Hampden | 3 | 1 | 6 Aug 1906 | 7 Aug 1910 | Eden | 2 | 1 | 24 Sept 1906 | 17 July 1918 |
| East Hebron | 2 | 1 | 30 May 1904 | 1 Jan 1912 | Ede's Falls | 2 | 2 | 24 Aug 1905 | |
| East Hiram | 3 | 2 | 6 July 1906 | 20 July 1910 | Eggemoggin | 3 | 2 | 30 June 1907 | 13 Aug 1912 |
| East Hiram | 3 | 4 | 12 July 1906 | 12 April 1911 | Egypt | 1 | 1 | 16 Sept 1904 | 21 March 1912 |
| East Lebanon | 2 | 3 | 15 June 1905 | 2 Jan 1909 | Embden | 2 | 1 | 22 Feb 1904 | 17 July 1905 |
| East Limington | 2 | 1 | 16 May 1906 | 28 Aug 1908 | Emery Mills | 3 | 1 | 12 Aug 1907 | 24 Aug 1908 |
| East Lincoln | 2 | 1 | 15 Sept 1905 | 31 July 1908 | Etna | 2 | 4 | 3 Sept 1905 | 2 Sept 1911 |
| East Livermore | 1 | 2 | 1 April 1904 | 11 July 1908 | Eustis | 1 | 1 | 9 June 1905 | 22 Feb 1909 |
| E. Livermore Falls | 3 | 2 | 13 Oct 1906 | 2 Sept 1908 | Eustis | 1 | 8 | 7 Feb 1907 | 28 Dec 1908 |
| East Mercer | 2 | 1 | 21 Sept 1905 | 9 Aug 1909 | Exeter | 2 | 3 | 15 June 1904 | 10 June 1925 |
| East Newcastle | 3 | 1 | 21 Aug 1906 | 19 Aug 1909 | | | | | |
| East Newport | 1 | | 7 July 1904 | 16 Sept 1907 | Farmington Falls | 3 | 4 | 2 March 1906 | 3 May 1921 |
| East Newport | 2 | 3 | 29 June 1904 | 14 Feb 1910 | Fayette | 2 | 2 | 9 June 1904 | 13 April 1911 |
| E. New Portland | 3 | 2 | 20 April 1906 | 15 Oct 1924 | Five Islands | 2 | 3 | 7 Aug 1904 | 15 Aug 1908 |
| E. N. Yarmouth | 2 | 2 | 15 March 1905 | 24 June 1909 | Five Islands | 3 | 4 | 12 Oct 1906 | 23 Aug 1912 |
| East Orland | 3 | 3 | 17 July 1907 | 24 Dec 1912 | Flagstaff | 3 | 3 | 6 July 1906 | 5 Sept 1911 |
| East Peru | 3 | 2 | 25 April 1907 | 18 Oct 1919 | Fort Kent Mills | 3 | 1 | 21 Nov 1906 | 13 May 1908 |
| East Peru | 2 | 2 | 9 Oct 1906 | 22 Dec 1906 | Frenchville | 2 | 3 | 8 Aug 1907 | |
| East Poland | 3 | | 21 Aug 1907 | 4 April 1912 | Frye | 3 | 2 | 13 Nov 1906 | 2 Feb 1912 |
| East Rumford | 2 | 1 | 23 Aug 1905 | 4 Aug 1908 | Fryeburg Center | 2 | | 12 Oct 1910 | |
| East Sebago | 2 | 3 | 28 Oct 1904 | 16 June 1913 | | | | | |

The list continues in the next issue.

POSTAL HISTORY

A-Bomb Survivor-1947 Hiroshima

by Bruce Nelson

Sometimes the message says it all. Here, Mr. Chuichi Miyasaki is requesting Naval Doctor Col. Warren in Nagasaki City for help in treating his recurring skin eruptions.

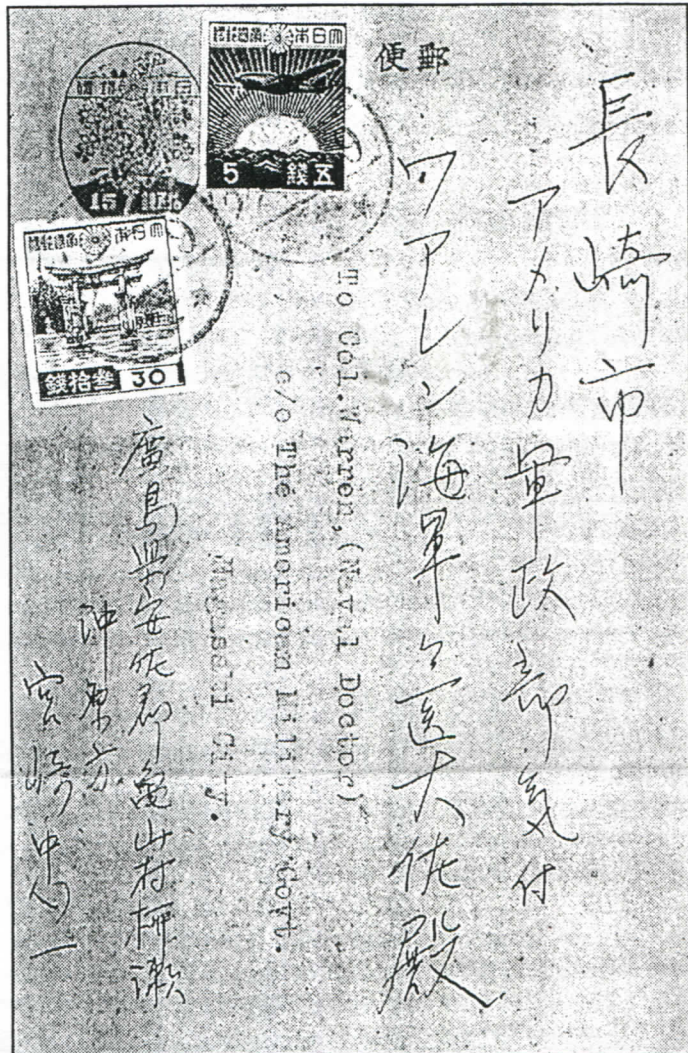
Dated May 9, 1947, from Hiroshima (Japan), he writes:

"Close to my Atomic Burn Scars of face (6 times x-rayed) & shoulder (had not) frequently itchy Ring-worm like skin eruptions came out again which since March last year have been disappeared. I shall therefore highly be grateful if you will kindly give me any advice on the treatment of my case as also any caution [sic] for my health. My age 48 and place of accident: 1.8 kilo-metres off A-centre. Thanking you in anticipation, Yours Faithfully," signed "C. Miyasaki."

A note in the lower right area refers to an appointment Saturday, May 31st at the Red Cross Hospital which was probably written in response to this request.

This postal history gem refers of course to the Hiroshima Atomic Bomb blast of Aug. 6, 1945. Although Miyasaki obviously survived the bombing, he was then (1947) suffering from the longer term effects and probably became a statistic himself. Postcards of this horrific event are rarely found and then usually only show ruins. Here the message and postal use bring this card to life as a document of world history.

Write to B. Nelson, P.O. Box 3565, Portland, ME 04104.



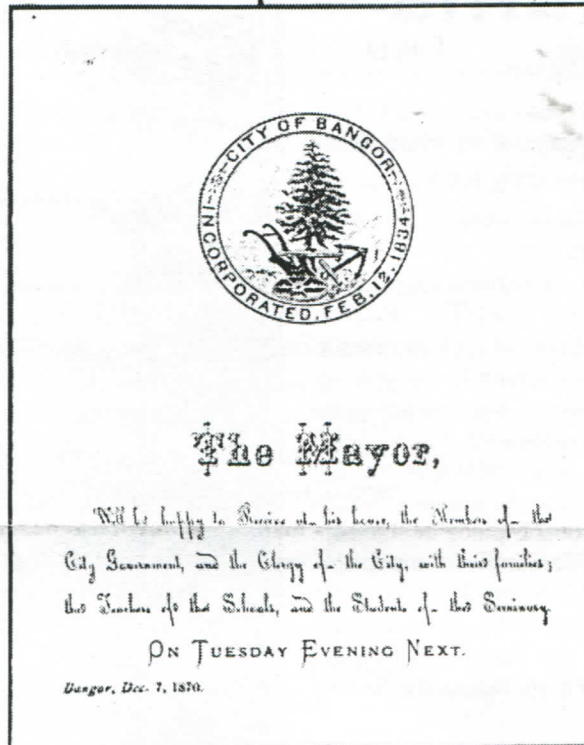
Dear Col. Warren, Hiroshima, 9th May, 1947; Close to my Atomic Burn Scars of face (6 times X-rayed) & shoulder (had not) frequently itchy ring-worm like skin eruptions came out again which since March last year have been disappeared. I shall therefore highly be grateful if you will kindly give me any advice on the treatment of my case as also any caution for my health. My age 48 and place of accident: 1.8 kilo-metres off A-centre. Thanking you in anticipation. Yours Faithfully, C. Miyasaki. Mr. Chuichi Miyasaki, c/o Mr. Okihara, Yanase, Kamoyama-mura, Asahi-cho, Hiroshima-ken. Sat. May 31 - 10 o'clock. Sendai Red Cross office of Red Cross

A postal history feature
by Rob Washburn
of Skowhegan

Maine Cover of the Quarter

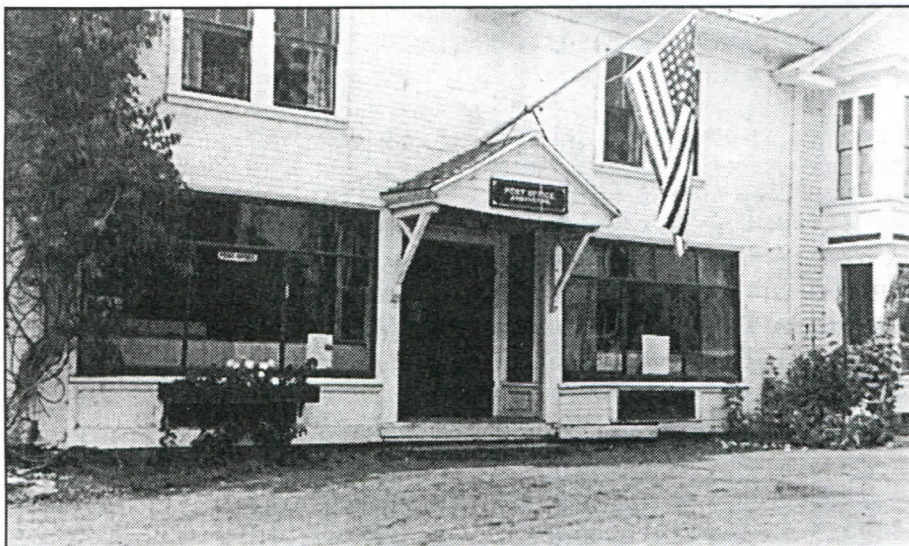


This cover features a black Bangor, ME 12/8/(1870) postmark with a black "B" killer cancel tying the 1¢ 1869 issue stamp (US #112) paying the drop letter rate or printed circular rate postage at a post office where letter carriers were not employed. The enclosure is an invitation sent by the mayor of Bangor (cover courtesy of Millard H. Mack). If you have a candidate for Maine Cover of the Quarter, please send a photocopy of your cover against a black background to Rob Washburn, P.O. Box 840, Skowhegan, ME 04976.



Post Offices of Maine

A regular feature



This photo shows the post office in Andover, Maine. The post office, located in Oxford County, was established on August 18, 1824 and is still operating. It was located in Dresser's Store, then in Walter Barnes' store and other locations. This photograph is from July 1958. Thanks to Secretary Bruce Hazelton, who loaned the photo. Do YOU have a photo of an old post office? Send it to the editor with as much information as you know about it.

MAIPEX '01 Stamp Show & Auction

Sponsored by the Waterville Stamp Club

Stamps & Stamp Supplies

USPS Desk

Giant Board Auction

Postcards & Covers

Refreshments

9:00 a.m. to 4:00 p.m.

SATURDAY, APRIL 28

Table Auction Closes 12:30 p.m.,

oral auction starts 1:00 p.m.

Kennebec Valley Technical College, Fairfield

Exit 35 on I-95, 200 yards east on Route 139

Secretary's Report *Bruce Hazelton Secretary*

NEW MEMBERS

Matt Merfeld, P.O. Box 453, Castine, ME 04421 (former member)

Nancy E. Ryan, RR1, Box 4905, Lincoln Mills, ME 04849

Andrew J. Moran, 32 Atlantic Highway, Northport, ME 04849

ADDRESS CHANGES

Carl A. Burnham, 1298 Cape Rd., Limington, ME 04049

L.O. Selin, P.O. Box 429, Baileyville, ME 04694-0429

Millard Mack, Rookwood Tower, Suite 200, 3805 Edwards Rd., Cincinnati, OH 45209-1916

Don Edgar, P.O. Box 122, Winthrop, ME 04364

Norm Cleaves, P.O. Box 100, New Gloucester, ME 04260

THE CLASSIFIEDS

Classified advertisements are free to members. You may use this space to buy and sell, trade or swap. When sending an advertisement, please mark it for the Classifieds and indicate how many issues you wish it to appear. All ads will appear twice and be removed unless otherwise indicated.

WANTED

Wanted: modern (since 1970) U.S. covers. I am especially looking for junk mail transportation coil PNC covers, Express mail, postage dues, insured mail, Certified mail, auxiliary markings. Rob Washburn, P.O. Box 840, Skowhegan, ME 04976-0840. (4-01)

Wanted: Maine hunting and fishing stamps on license. Will pay a minimum of \$10 each for every license I need. Also want Maine (and other New England states) Old Home Week seals. Terence Hines, P.O. Box 629, Chappaqua, NY 10514-0629. (4-01)

Information needed to further research on Maine NARROW GAUGE RPOs. Need RPO, month, day, year, train no. ME 4 BAR COLORED cancels, need P.O. name, month, day, year, time, color. Will respond to all information received. Bruce L. Corey, 108 Marilyn Ave., Westbrook, ME 04092-4624. (4-01)

Wanted to buy: Maine fancy cancels on cover or postal cards, stampless to 1920 only. Let me know what you have. Gil Roderick, 52 Fern St., Bangor, ME 04401. (4-01)

Collector is looking for covers from Houlton Air Force Base Station. If you have same, please contact me. Telephone: 538-9788 (home) or 532-2291 (work). My e-mail is max@ainop.com Max Leigh Lynds, P.O. Box 761, Houlton, ME 04730-0761. (4-01)

Wanted: perfins used in Maine, on cover or off (with good town cancels). Special interest in AJS (Auburn) and RB (Bangor) -- users not yet identified. Will buy or trade. Vince McDermott, 53 Willow Grove Rd., Brunswick, ME 04011-2969. (4-01)

We urgently need quantities of used Japanese stamps from the period of 1876 (Old Koban Series) through 1955. Dealer stocks, accumulations, bundle material from this period needed for our specialist customers. Will buy anything and everything (used only) at fair prices or will select only what we must urgently need at

near to full Scott retail. Prompt payment always. Forty-five years in the trade! John B. Head, P.O. Box 7, Bethel, ME 04217. (4-01)

Wanted: Maine Express Covers (and others): with labels, hand-stamps, manuscript markings or cornercards. Express Company labels and stamps (such as for newspapers, parcels or free franking) off cover also sought. William W. Sammis (Bill), 436 Thomas Rd., Ithaca, NY 14850-9653. (4-01)

Wanted: Early USN postcards of battleships with ship cancels before 1920 (called classics): BB2 USS *Massachusetts*, BB4 USS *Iowa*, BB5 USS *Kearsage*, BB7 USS *Illinois*, BB8 USS *Alabama*, BB9 USS *Wisconsin*. I have other BB covers and postcards for trade. Also interested in topicals, especially flowers on stamps, and Antarctic stamps. Louis C. Bakula, P.O. Box 150, West Poland, ME 04291-0150. (4-01)

Wanted: Any PPC with Lake Cobbesseeconte (Manchester, Maine as well). Also any PPC with rural railroad scenes as well as RPO covers in the lower price range. Gary Clark, 3607 Landings Way Dr., Apt. 107, Tampa, FL 33624. (4-01)

Wanted: Postal history of Pitcairn Island in the South Pacific, St. Pierre & Miquelon and Newfoundland. Some stamps also needed. Let me know if you have anything to offer. Everett L. Parker, HC 76, Box 32, Greenville, ME 04441 (4-01)

FOR SALE

Precancel approvals: town and types 15¢, classics, 1922-26 general, bicents, prexies, perfins available. Buro approvals starting at 5¢. Good mixed precancel lots. 2,000-\$25.00; 10,000-\$110.00. Mixed buros, 2,000-\$25.00, 10,000-\$110.00. Dick Laetsch, 108 Ashswamp Road, Scarborough, ME 04074. e-mail: precancel@aol.com (4-01)

For sale: DPO, Macy, ME - Doane 1906 on PPC, Rarity 8. First \$75.00 takes it. Carl A. Burnham, RR1, Box 559, Limington, ME 04046. Telephone 637-2871. (4-01)

President's Message

By Everett L. Parker

Plans are still under way for a Bangor-area stamp show this year. Board member Max Lynds and Vice President James Foote III have been working with members of the Penobscot Valley Stamp Club to come up with a proposal for our joint boards of directors. The MPS board will meet at 11 a.m. this Saturday (April 21) at Miller's Restaurant in Bangor. Members are always encouraged to attend our board meetings, and you are most welcome to come and express your ideas on this or any other topic.

Speaking of Jim Foote, he e-mailed the other day that the postmaster at the Manchester Post Office has agreed to let him place a few copies of *The Maine Philatelist* in the office lobby to help us attract new members. It's good to note that our membership continues to grow -- several new members are mentioned in this issue of the journal.

If you belong to a Maine stamp club and it's not listed on page two, then we need to know about it. There is no charge for the listing, and we want it to be as comprehensive as possible. Even though I continue to hear about stamp clubs quitting because no one volunteers (we don't have that problem, do we?), there must be more clubs meeting than we're showing. Quite often I get e-mails or letters from out-of-state (and even in-state) philatelists wanting to know if there's a club in a certain area. I can't tell them if I don't know!

Maine Philatelic Society
 HC 76, Box 32
 Greenville, ME 04441-9727

Are YOU on the Internet?

Here is a list of MPS members with e-mail

- | | |
|----------------------------------------------|----------------------------------------------|
| Joe Antizzo Joeantizzo@aol.com | Rev. Robert Leon aslanleon@altavista.com |
| George Barner gbarner@cybertours.com | Paul R. Maynard paulmaynard@myway.com |
| Al Barth abarth@bdc.bethel.me.us | Robert W. Olmsted cal@americanletters.org |
| Chuck Brand shakerdom@hotmail.com | Phil Peverada peverada@midcoast.com |
| Tom Cieslinski singcies@mint.net | Thurlow Pitts antares23@hypernet.com |
| Gary Clark gclark1@tampabay.rr.com | Jack Pooler pooler@home.com |
| Nancy B. Clark nbc@Cape.com | Steven Pottle sppride@aol.com |
| David Costain dcostain@midmaine.com | Gil Roderick destamps@acadia.net |
| Dr. John Engle jengle@mint.net | William W. Sammis cads13@cornell.edu |
| Jim Forte = jimforte@postal history.com | John E. Sawjill Jr. bsawhill@ime.net |
| Dan Goodwin dgoodwin@psouth.net | Roland Simard manacorp@aol.com |
| Robert Gross bobgross50@earthlink.net | Henry Stevens hstevens@stamps.win.net |
| Terence Hines THines@FSmail.Pace.edu | Henry G. Turnbull AZNPHTGT@webtv.net |
| Kelvin Kindahl kanda@javanet.com | Edwin F. Whitney edwhit@blazenetme.net |
| Dick Laetsch precancel@aol.com | Richard Williams richwill@qsilver.net |
| Steve LaForge stephenlaforge@netscape.net | Kennedy L. Wilson k-mew@midcoast.com |
| Rick Lancaster modcovers@wworx.net | |



TO:

(6-01) #549
 KINDAHL MR KELVIN
 29 CLARK ST
 EAST HAMPTON MA 01027-2329

IMPORTANT NOTICE:
 If (6-00) appears after your name on the mailing label, it's time to renew your dues!

