



# The Maine Philatelist

Vol. 34, No. 2

October 2001

Whole No. 125

## Annual MPS Houlton stamp show set for Oct. 6

It's just around the corner -- the Maine Philatelic Society's annual international stamp show in Houlton. This year's event will be held from 9 a.m. to 4 p.m. on Saturday, October 6. The show will be at the John Millar Civic Center at Community Park, and several dealers are expected. They will offer a wide variety of stamps, covers, postcards and supplies for sale.

There will be an exhibit of Maine and New Brunswick postal history at the show, making this a truly international event. The venue is located near the

Canadian border, and several stamp clubs in New Brunswick have been invited to attend.

The ever-popular table auction will begin at 10 a.m. and close at 12:30 p.m., with lots having five or more bids going to oral auction beginning at 1 p.m.

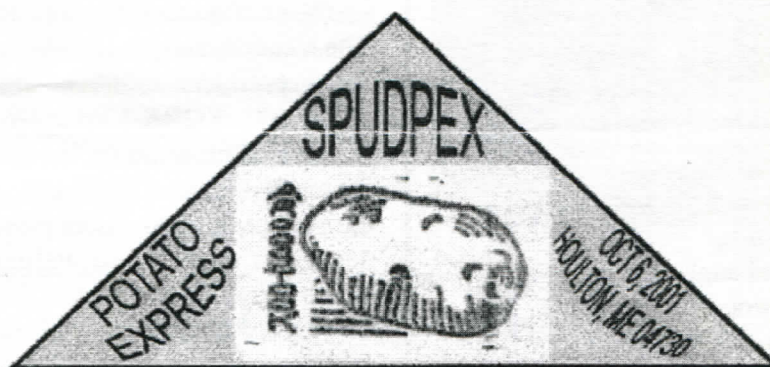
The Greater Houlton Area Chamber of Commerce has once again generously provided the Maine Philatelic Society with space for the show at no cost. Members of the MPS will be on hand to offer free appraisals of stamp collections and postal history during the show.

"This is very exciting for us," said Max Lynds, the Houlton MPS member who organized the

show beginning in 2000. "Hopefully we will have a good number of collectors from other parts of Maine who will come up to enjoy the autumn color and have fun with stamps at the same time."

The civic center will have food available and there is ample free parking.

To reach the site from the south, leave I-95 at the first Houlton exit and bear right. Take your next left onto Washburn Street, the next right onto Highland Avenue, go to the stop sign and turn left onto Pleasant Avenue. Take your third right onto Randall Street and continue straight into



*Max Lynds has designed this special triangular stamp for the Houlton show.*

the Community Park and you will see the Millar Civic Center.

Lodging is available at the following locations: Shiretown Motor Inn, just north of the I-95 Houlton exit (telephone 532-9421); Ivey's Motor Lodge (532-4206), and the Star Dust Motel on North Road (532-6538).

For additional information, Max Lynds may be contacted at P.O. Box 761, Houlton, ME 04730-0761. His telephone is 532-2291, extension 242. He can be reached by e-mail at [max@ainop.com](mailto:max@ainop.com).

Plan to come and enjoy philately on an international scale! ☒

*The Maine Philatelist* is published quarterly by the Maine Philatelic Society, Inc.

Website: <http://www.ainop.com/users/max/mps.htm>

The purpose of the Society, a non-profit Maine corporation, is to promote philately in the Pine Tree State. Membership is open to anyone. Membership applications are available from the Secretary, listed below.

Dues are \$5.00 per fiscal year (ending in June).

Life Membership is also available.

Contact the Secretary for details.

**Articles for publication should be sent to the President/Editor at address below.**

**OFFICERS**

*President*

Dr. Everett L. Parker (2001)  
 HC 76, Box 32  
 Greenville, ME 04441-9727  
 (207) 695-3163 (Voice and Fax)  
 e-mail - eparker@moosehead.net

*Vice President*

Mr. Jim Foote III (2002)  
 P.O. Box 16  
 Manchester, ME 04351-0016

*Secretary*

Mr. Bruce Hazelton (2001)  
 P.O. Box 67A  
 Cumberland Center, ME 04021

*Treasurer*

Mr. Rick Stambaugh (2002)  
 16 Elmwood Ct.  
 N. Berwick, ME 03906  
 e-mail - rickstambaugh@cybertours.com

**BOARD OF DIRECTORS**

Richard Warren of Cushing (dickw@midcoast.com) (2002)  
 Ray Gagnon of Lewiston (2002)  
 Max L. Lynds of Houlton (max@ainop.com) (2002)  
 John E. Engle, M.D. of Waterville (jengle@mint.net) (2002)

**PUBLISHING SCHEDULE**

*The Maine Philatelist* is distributed to members in January, April, July and October of each year. Below is a list of deadlines for each issue and the anticipated mailing date. While deadline for copy (articles) is firm, the anticipated mailing date is just that -- a "best guess" of mailing.

ISSUE COVER DATE	DEADLINE FOR COPY	JOURNAL TO PRINTER	ANTICIPATED MAILING DATE
January	Dec. 15	Dec. 30	Jan. 15
April	March 15	March 30	April 15
July	June 15	June 30	July 15
October	Sept. 15	Sept. 30	Oct. 15

# Maine stamp club meetings



*Stamp clubs in Maine are invited to become members of the Maine Philatelic Society. We will publish, free of charge, meeting information and locations.*

**WATERVILLE STAMP CLUB**

The club meets on the first and third Friday from September to May and on the third Friday only during June, July and August. Meetings are from 6:30 to 9 p.m. at the Kennebec Valley Technical College (KVTC) on Western Avenue in Fairfield (Exit 35 of Interstate 95). For information, call 872-5107. Nonmembers are invited to attend.

**BELFAST STAMP CLUB**

The club meets on the third Thursday of the month at noon. The location changes each month. For information, call Dick Gerry, president, at 866-3583.

**YORK COUNTY STAMP CLUB**

The club meets on the second and fourth Thursday of each month beginning at 7:30 p.m. at the Sanford Masonic Hall, Elm Street, Sanford. Usual events include raffle, auction, presentations, refreshments, and an occasional visit from a stamp dealer. Dues are \$5 per year. For information, contact Secretary Tracey Levasseur, 329 Ross Corner Rd., Shapleigh, ME 04076.

**UNION RIVER STAMP CLUB**

The Union River Stamp Club meets the first Thursday of each month from April through November at the Ellsworth Library, beginning at 6:30 p.m. For information, contact Eric Beal at <Eric\_Beal@umit.maine.edu>.

*Please note that the listings contained above are free of charge to clubs which are members of the Maine Philatelic Society. Since most of these clubs do not keep the editor up to date on meeting times and locations, the above information may be out of date. It's always a good idea to contact someone with the club before traveling long distances.*

# These "favorite" Maine covers cost less than \$10!

By Michael Weiss  
Of New York

My two favorite Maine postal history covers cost less than \$10. The covers and their enclosures have been enjoyable to research in that I discovered new things about the history of Maine.

The first cover (Figure 1) is from a \$1 bin at a local stamp show and was written in 1877 to Joshua Chamberlain, a Civil War hero. The letter was signed by Edwin C. Burleigh, state land agent at the time, who went on to become a Maine governor, a Congressman, and a Senator. The notes jotted on the outside of the envelope have been confirmed to me as the handwriting of Chamberlain himself.

The second cover (Figure 2), an official Executive Department envelope, was probably hand-delivered. The enclosed letter, dated July 9, 1864, was sent by Josiah Drummond, the state Attorney General from 1860-1863, and the Maine delegate to the Republican National Convention in 1864. The envelope is addressed to Col. M. Wentworth, the original commander of the much-decorated 27th Maine Regiment. The letter introduces a Capt. Chadwell, who I am still researching. These covers and enclosure combine my favorite interests, Maine, the Civil War, and postal history. ☐

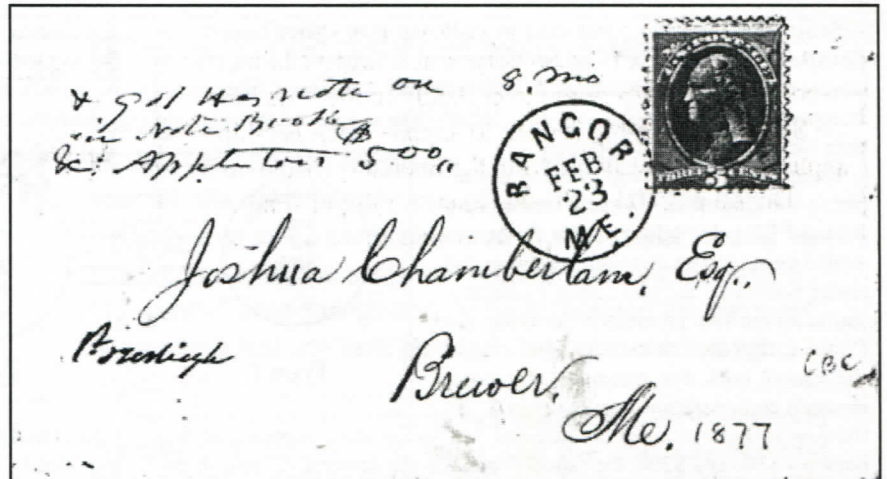


Figure 1



Figure 2

## Are YOU on the Internet?

Here is a list of MPS members with e-mail

**Joe Antizzo**

Joeantizzo@aol.com

**Louis C. Bakuka**

grampsun@aol.com

**George Barner**

gbarner@cybertours.com

**Al Barth**

abarth@bdc.bethel.me.us

**Chuck Brand**

shakerdom@hotmail.com

**Tom Cieslinski**

singcies@mint.net

**Gary Clark**

gclark1@tampabay.rr.com

**Nancy B. Clark**

nbc@Cape.com

**David Costain**

dcostain@midmaine.com

**Dr. John Engle**

jengle@mint.net

**Jim Forte**

jimforte@postalhistory.com

**Dan Goodwin**

dgoodwin@psouth.net

**Robert Gross**

bobgross50@earthlink.net

**Terence Hines**

THines@FSmail.Pace.edu

**Kelvin Kindahl**

kanda@javanet.com

**Dick Laetsch**

precancel@aol.com

**Steve LaForge**

stephenlaforge@netscape.net

**Rick Lancaster**

modcovers@wworx.net

**Rev. Robert Leon**

aslanleon@altavista.com

**Paul R. Maynard**

Maynard25@Charter.net

**Robert W. Olmsted**

cal@americanletters.org

**Everett L. Parker**

eparker@moosehead.net

**Phil Peverada**

peverada@midcoast.com

**Thurlow Pitts**

antares23@hypernet.com

**Jack Pooler**

pooler@home.com

**Steven Pottle**

sppride@aol.com

**Gil Roderick**

destamps@acadia.net

**William W. Sammis**

cds13@cornell.edu

**John E. Sawhill Jr.**

bsawhill@gwi.net

**Barry Serpell**

serpellmaine@aol.com

**Roland Simard**

manacorp@aol.com

**Henry Stevens**

hstevens@stamps.win.net

**Henry G. Turnbull**

AZNPHTGT@webtv.net

**Edwin F. Whitney**

edfwhitney@yahoo.com

**Richard Williams**

richwill@qsilver.net

**Kennedy L. Wilson**

k-mew@midcoast.com

# Comprehensive Maine DOANES listing continues

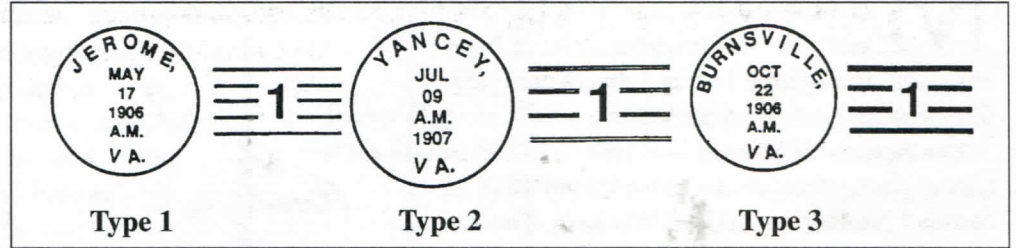
Starting in 1903 and concluding in 1906, the Post Office Department distributed a unique type of rubber handstamp to improve the impression quality of postmarks and cancels. Postal historians now refer to these handstamps as "Doane Cancels" in honor of Edith Doane, who led research into their background and distribution.

Doane cancels are recognizable by a number in the cancel bars. Recent research by Richard Helbock, editor of *La Posta*, revealed a near perfect correlation between the dollar volume of the postmaster's compensation for the year previous to the issue of a Doane cancel and the number appearing in the cancel bars. For example, if a postmaster's compensation was less than \$100, the new cancel contained the numeral "1." When the compensation was between \$100 and \$200, the cancel contained the numeral "2" and so on.

Doanes were issued in different formats that are identified as Types 1, 2 and 3. The numbering of the types is based on their chronological order of

distribution. For example, the five bar Type 1 cancel was issued in 1903 (up to October), the hollow, four bar Type 2 between October 1903 and June 1905, and the solid, four bar from June 1905 to the mid- 1906.

Samples of each type are shown on this page. This is only a brief over-



view of the Doane system. Following is a listing of all known Maine Doanes, provided by Secretary Bruce Hazelton. Corrections should be sent to Mr. Hazelton at P.O. Box 67A, Cumberland Center, ME 04021.

## MAINE DOANES

Post Office	Type	No.	Earliest	Latest	Post Office	Type	No.	Earliest	Latest
Lewiston Jct.	3	2	28 May 1906	24 Feb 1907	Moosehead	3	2	22 Oct 1906	13 Aug 1912
Lexington	3	1	10 Nov 1906	22 Aug 1912	Moose River	2	3	3 Oct 1904	6 Dec 1908
Lilibay	2	3	30 June 1905	24 Dec 1920	Morison	2	1	7 Feb 1904	4 Aug 1905
Lisbon Center	2	3	1 Dec 1905	3 Dec 1910	Moro	3	2	13 Sept 1906	2 Nov 1906
Litchfield	2	3	22 Aug 1907		Mountainville	2		13 Sept 1904	
Litchfield	3	4	15 Dec 1905	6 Nov 1907	Mount Vernon	2	5	8 Aug 1905	13 Dec 1910
Litchfield Corners	2	3	4 April 1904	21 Oct 1911	Murray	2	1	1 Sept 1905	26 Dec 1907
Livermore Center	3	3	21 Nov 1906	27 Dec 1910	Myra	2	1	21 Feb 1910	12 Aug 1918
Long Island	2	3	14 July 1905	11 Sept 1908	Naskaeg	3	1	18 May 1908	10 April 1914
Lookout	3	1	9 Aug 1906	15 Sept 1936	New Limerick	3	3	18 April 1906	25 March 1911
Lower Grand Isle	3	2	14 Jan 1907	14 Feb 1908	New Portland	1	3	2 Oct 1903	22 Dec 1927
Ludlow	2	1	17 Sept 1908		New Portland	2	?	11 July 1907	
Macmahan	3	?	12 July 1909		Newry	2	2	26 March 1903	1 Aug 1910
Macwahoc	2	3	9 Oct 1905	12 June 1910	Nobleboro	2	3	5 Dec 1906	6 April 1912
Macy	2	1	3 March 1904	12 March 1908	Nobleboro	3	3	11 Oct 1906	18 Aug 1911
Mainstream	3	3	12 July 1906	14 Feb 1912	Norcross	3	4	21 Aug 1905	2 May 1910
Maple Grove	1	2	2 March 1904	17 Nov 1914	North Amity	2	1	27 July 1904	19 July 1909
Maranacook	2	3	13 July 1904	14 July 1911	North Baldwin	2	2	21 Feb 1906	1907
Marlboro	2	1	17 July 1905	22 Dec 1911	North Baldwin	3	2	8 July 1907	30 June 1955
Martinsville	2	2	11 Aug 1905	30 Nov 1911	North Belgrade	3	3	25 July 1907	21 June 1917
Masardis	3	2	1 Feb 1909		North Bethel	3	2	16 April 1906	28 April 1914
Matagamon	2	1	4 Jan 1907	13 Sept 1911	North Blanchard	3	2	9 June 1906	13 May 1915
Matinicus	3	2	21 Dec 1906	24 June 1915	North Brooksville	2	3	23 Feb 1907	28 Dec 1917
Meddybemps	2	2	11 Aug 1905	14 Jan 1910	North Buckfield	1	1	29 Dec 1903	8 April 1907
Medford Center	1	2	31 July 1903	30 April 1913	North Castine	3	2	29 March 1907	8 April 1910
Medomak	3	2	3 Nov 1906	23 July 1910	North Chesterville	2	2	6 Sept 1905	27 July 1911
Merepoint	3	1	28 Aug 1905	23 Aug 1913	North Chesterville	3	2	15 April 1906	11 July 1911
Michaud	2	1	11 Oct 1905	28 June 1907	North Cushing	3	1	18 April 1907	19 March 1911
Millvale	2	1	1 Aug 1905	29 May 1909	North Dexter	2	2	23 Dec 1905	30 Nov. 1909
Milo Junction	3	1	10 May 1906	2 Sept 1909	Northeast Carry	2	3	20 April 1905	5 Oct 1909
Minot	3	2	(1906) 26 May 1908	16 Feb 1909					
Monarda	1	1	17 Aug 1904	13 Aug 1910					
Montville	1	2	28 Sept 1903	11 July 1910					

The list continues in the next issue.

# PIONEER POSTCARDS

## WOODRUFFS BAKING POWDER POSTAL CARD

Quincy, Ill.

1879

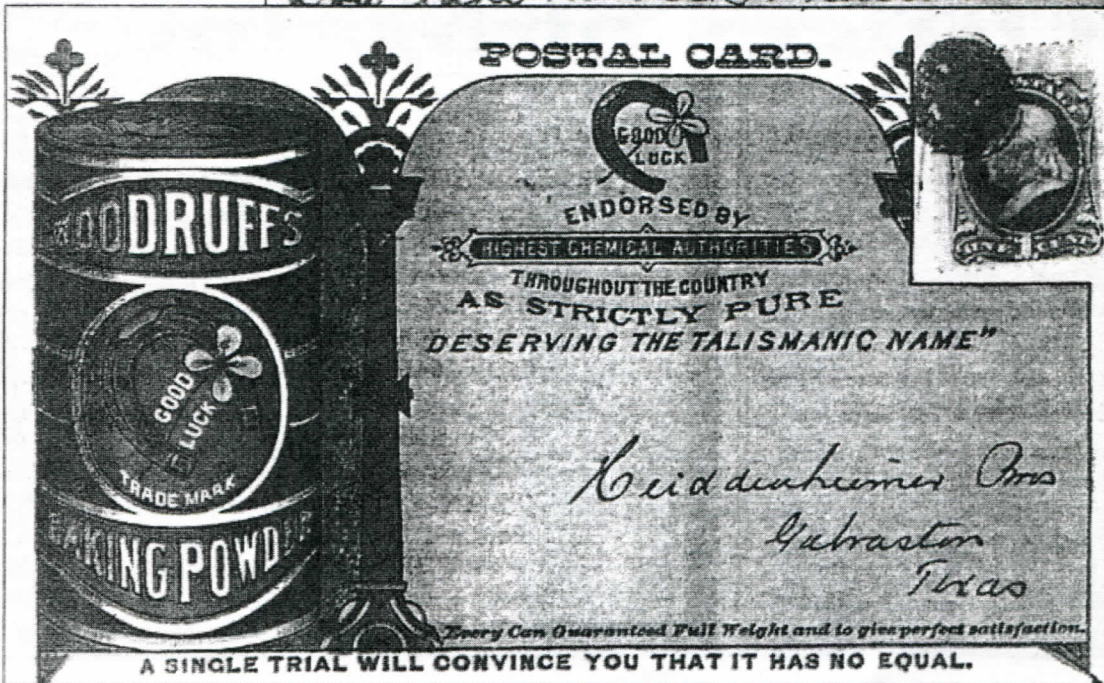
by Bruce Nelson

This multicolored postal card beauty is dated Aug. 7, 1879 in the printed handwritten message. One cent postage was paid and a nice tied-on cancellation validates its use. Only printed messages were able to use the commercial rate. Interestingly enough on the 11th line down, "30 day trial at 12 cents delivered at your depot" the "2" is crossed out with the same ink used in the front to make it "11 cents." This change should have required the payment of an additional one cent postage, but it passed through unnoticed.

Though the text is probably not readable here, it promotes the use of bulk baking powder and the cost savings that Woodruff passes along to his customers (probably bakeries). He will give a low cost trial use and offers "Handsome Show Cards" to his patrons.

*Sent to* Quincy Ill. Aug 7<sup>th</sup> 1879  
 Are you purchasing a superior and  
unequaled Bulk Baking Powder at low rates.  
 Having increased our capacity to 6000<sup>lbs</sup> per  
 day, without materially increasing expenses,  
 we can now sell at 25% closer margins  
 than as though we sent an agent into your  
 state. We are thus able to choose our customers  
 & hence save the % of losses we should be  
 pleased to ship you a 1/2 lb on 30 days  
trial at 12¢ ~~2~~ delivered at your depot, and if not  
 satisfactory, ship back at our expense.  
 How taxes no risk & hence I trust we may be  
renew your  
order  
 Woodruff

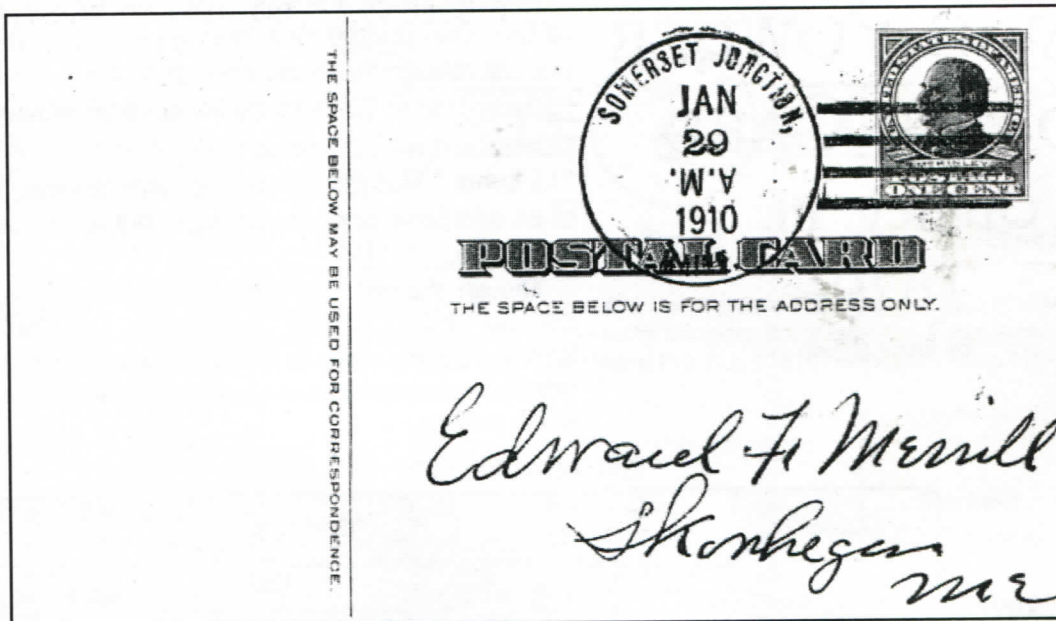
10  
 12¢



Write to  
 Bruce Nelson,  
 P.O. Box 3565,  
 Portland, ME  
 04104.

A postal history feature  
by Rob Washburn  
of Skowhegan

# Maine Cover of the Quarter



The above UX20 postal card is tied by a January 29, 1910 Somerset Junction handstamp. The Somerset Junction Post Office was only in existence from September 15, 1908 to March 15, 1911 and has a rarity rating of 7 in *The Post Offices of Maine, A Rarity Guide*. This one also has an inverted "A.M." in the cancellation. Somerset Junction was located in Somerset County southwest of Rockwood. Today only a few summer camps are to be found in the former settlement.

*(If you have a candidate for Maine Cover of the Quarter, please send a photocopy of your cover against a black background to Rob Washburn, P.O. Box 840, Skowhegan, ME 04976).*

## Post Offices of Maine A regular feature



*This photo shows the post office in Old Orchard, Maine, and is undated. The post office, in York County, was established on May 18, 1874 and discontinued on October 1, 1929 when it was changed to Old Orchard Beach. The Old Orchard Beach Post Office is still operating. Thanks to Secretary Bruce Hazelton, who loaned the photo. Do YOU have a photo of an old post office? Send it to the editor with as much information as you know about it.*

## Notes from our members....

**Dan Goodwin** of North Berwick e-mailed that effective July 1, 2001, the China, Maine Post Office has changed to the China Village Post Office. The Zip Code remains 04926.

**Edward Whitney** of Brunswick sent a copy of a *Portland Press Herald* editorial about the possibility of moving the Cumberland Post Office. At the time, it was noted that the town's zoning department was considering moving the post office on Main Street. The editorial commented that a post office helps define a community's identity. "It's a public place where neighbors bump into each other, comment on local politics and ... buy stamps and mail their letters."

Secretary's Report *Bruce Hazelton  
Secretary*

## NEW MEMBERS

Robert E. Barker, P.O. Box 1100, Warren, ME 04864-1100

## ADDRESS CHANGES

Gary W. Hibbard, P.O. Box 4056, Portland, ME 04101-0256

## DECEASED

Hortense Haley

## THE CLASSIFIEDS

*Classified advertisements are free to members. You may use this space to buy and sell, trade or swap. When sending an advertisement, please mark it for the Classifieds and indicate how many issues you wish it to appear. All ads will appear twice and be removed unless otherwise indicated.*

## WANTED

**Wanted: modern (since 1970)** U.S. covers. I am especially looking for junk mail transportation coil PNC covers, Express mail, postage dues, insured mail, Certified mail, auxiliary markings. Rob Washburn, P.O. Box 840, Skowhegan, ME 04976-0840. (4-01)

**Wanted: Maine hunting and fishing** stamps on license. Will pay a minimum of \$10 each for every license I need. Also want Maine (and other New England states) Old Home Week seals. Terence Hines, P.O. Box 629, Chappaqua, NY 10514-0629. (4-01)

**Information needed to further research** on Maine NARROW GAUGE RPOs. Need RPO, month, day, year, train no. ME 4 BAR COLORED cancels, need P.O. name, month, day, year, time, color. Will respond to all information received. Bruce L. Corey, 108 Marilyn Ave., Westbrook, ME 04092-4624. (4-01)

**Wanted to buy: Maine fancy cancels** on cover or postal cards, stampless to 1920 only. Let me know what you have. Gil Roderick, 52 Fern St., Bangor, ME 04401. (4-01)

**Collector is looking for covers** from Houlton Air Force Base Station. If you have same, please contact me. Telephone: 538-9788 (home) or 532-2291 (work). My e-mail is max@ainop.com Max Leigh Lynds, P.O. Box 761, Houlton, ME 04730-0761. (4-01)

**Wanted: perfins used in Maine**, on cover or off (with good town cancels). Special interest in AJS (Auburn) and RB (Bangor) -- users not yet identified. Will buy or trade. Vince McDermott, 53 Willow Grove Rd., Brunswick, ME 04011-2969. (4-01)

**We urgently need** quantities of used Japanese stamps from the period of 1876 (Old Koban Series) through 1955. Dealer stocks, accumulations, bundle material from this period needed for our specialist customers. Will buy anything and everything (used only) at fair prices or will select only what we must urgently need at

near to full Scott retail. Prompt payment always. Forty-five years in the trade! John B. Head, P.O. Box 7, Bethel, ME 04217. (4-01)

**Wanted: Maine Express Covers** (and others): with labels, hand-stamps, manuscript markings or cornercards. Express Company labels and stamps (such as for newspapers, parcels or free franking) off cover also sought. William W. Sammis (Bill), 436 Thomas Rd., Ithaca, NY 14850-9653. (4-01)

**Wanted: Early USN postcards** of battleships with ship cancels before 1920 (called classics): BB2 USS *Massachusetts*, BB4 USS *Iowa*, BB5 USS *Kearsage*, BB7 USS *Illinois*, BB8 USS *Alabama*, BB9 USS *Wisconsin*. I have other BB covers and postcards for trade. Also interested in topicals, especially flowers on stamps, and Antarctic stamps. Louis C. Bakula, P.O. Box 150, West Poland, ME 04291-0150. (4-01)

**Wanted: Any PPC** with Lake Cobbesseeconte (Manchester, Maine as well). Also any PPC with rural railroad scenes as well as RPO covers in the lower price range. Gary Clark, 3607 Landings Way Dr., Apt. 107, Tampa, FL 33624. (4-01)

**Wanted: Postal history of Pitcairn Island** in the South Pacific, St. Pierre & Miquelon and Newfoundland. Some stamps also needed. Let me know if you have anything to offer. Everett L. Parker, HC 76, Box 32, Greenville, ME 04441 (4-01)

## FOR SALE

**Precancel approvals:** town and types 15¢, classics, 1922-26 general, bicents, prexies, perfins available. Buro approvals starting at 5¢. Good mixed precancel lots. 2,000-\$25.00; 10,000-\$110.00. Mixed buros, 2,000-\$25.00, 10,000-\$110.00. Dick Laetsch, 108 Ashswamp Road, Scarborough, ME 04074. e-mail: precancel@aol.com (4-01)

**For sale: DPO, Macy, ME** - Doane 1906 on PPC, Rarity 8. First \$75.00 takes it. Carl A. Burnham, RR1, Box 559, Limington, ME 04046. Telephone 637-2871. (4-01)

**President's Message**  
By Everett L. Parker

There are two stamp shows coming up right away that you ought to know about. The Maine Philatelic Society is sponsoring SPUDPEX in Houlton on Saturday, October 6, and the Waterville Stamp Club will present its annual MAIPEX '01 at the Kennebec Valley Technical College in Fairfield the following Saturday, October 13. Hopefully you will plan on attending both shows.

The MPS has joined the American Philatelic Society as an affiliate. This will provide us a number of services such as access to the APS membership list and much more. The officers will be looking to the APS programs to find ways to increase our membership, which currently stands at 216. The APS chapter newsletter provides a lot of information for newsletter editors. There are so many benefits of membership that I look forward to seeing how we can improve our organization. I have been a Life Member of the APS and APRL (American Philatelic Research Library) for many years and find them the best around.

I continue to look for new ways to expand our membership and make your membership more worthwhile to you. Please contact me with any thoughts or ideas you might have.

# Waterville Stamp Club MAIPEX show Oct. 13

The Waterville Stamp Club will present MAIPEX '01 Stamp Show & Auction on October 13 at the Kennebec Valley Technical College in Fairfield.

The show will be held from 9 a.m. to 4 p.m. in Carter Hall.

Stamps and stamp supplies, a United States Postal Service desk, giant board auction, postcards and covers will be featured. The ever-popular table auction will be offered, and will close at 12:30 p.m., with the oral portion of the auction to begin at 1 p.m. Refreshments will be available for those attending the event.

The show site can be reached from Interstate 95 by taking Exit 35 and head east on Route 139. The college is only about 200 yards from the interchange.

Maine Philatelic Society  
HC 76, Box 32  
Greenville, ME 04441-9727



**TO:**

(6-02)#549

KINDAHL MR KELVIN  
29 CLARK ST  
EAST HAMPTON MA 01027-2329

**IMPORTANT NOTICE:**  
If (6-01) appears after your name on the mailing label, it's time to renew your dues!

