



The Maine Philatelist

Vol. 34, No. 4

April 2002

Whole No. 127

Time to prepare for the Ellsworth stamp show

Attendance at the Kittery stamp show in March could have been better, but dealers attending said they were pleased with the results. Now it's time to turn our attention to the Ellsworth show, set for August, and the Houlton show in October.

The Ellsworth show will be on August 3 (this is a week earlier than reported in our last issue because of a scheduling conflict) at the Elk's Club on the main road through the city. The show will be from 9 a.m. to 4 p.m., with a number of dealers on hand. There will be a silent and oral auction as part of the activities.

The standard format for Maine Philatelic Society events

such as this and the forthcoming Houlton show includes dealers, the silent and oral auction, and exhibits when possible. In the past, there have been awards presented for displays, but not many people participated. Likewise, exhibits are becoming more difficult to find.

Anyone interested in exhibiting or presenting a display should contact the president as participation by more than a small number of people will make our shows more successful. Any additional ideas or thoughts should be directed to the president or other officers.

Here's your chance to help MPS by serving on board

The Maine Philatelic Society Board of Directors is the group within MPS which governs the organization and sets policy. Currently, there are positions available as some members who have served for years are seeking other challenges (or lack of challenges!).

The board meets infrequently -- usually two or three times a year -- at a centrally located restaurant. Meetings usually last only a couple of hours. If you are interested in serving, or would like more information about what the position entails, please contact the president.

Help us design a new logo for the Maine Philatelic Society

The Maine Philatelic Society logo has been in use for many years. And now it's time to update the logo with a new design, or at very least, to add a new dimension to the existing one. Found at the top of this page, the current logo is circular and shows the outline of Maine with stamp tongs and a magnifier. The words "Maine Philatelic Society" are across the top.

Design entries should be sent to the president. A \$25 prize will be awarded for the best design. ☒

Girl Scout raising money for Europe trip by selling stamps

Emily Zimmermann of Roque Bluffs, Maine is a Senior Girl Scout in Troop 523 in Machias. The local council is sponsoring a trip to Switzerland and England this summer to visit two of the Girl Scout World Centers. These centers allow Girl Scouts worldwide to experience the local culture and to interact with and learn about other Scouts.

Miss Zimmermann is trying to raise \$2,400 for the trip, and she can't solicit donations, she said recently in a letter to the MPS. "I was given access to two old stamp collections," she said. "Together with some stamps I collected myself, I assembled kits containing 100 different U.S. stamps to be starter kits for beginning stamp collectors, especially children."

She has been selling these kits at yard sales, craft fairs, church events and community festivals. The MPS has donated \$100 and encourages members to make contributions as well. The stamp packets are most appropriate to give to children interested in starting to collect.

Each kit costs \$1.34 postpaid. To contact Miss Zimmermann, write to 298 Great Cove Rd., Roque Bluffs, ME 04654. Orders in multiples of one should also be sent to the same address. She expects to leave on the trip on July 29 and return August 7, so it would be best to contact her as soon as possible. ☒

The Maine Philatelist is published quarterly by the
Maine Philatelic Society, Inc.

Website: <http://www.ainop.com/users/max/mps.htm>

The purpose of the Society, a non-profit Maine corporation, is to promote philately in the Pine Tree State. Membership is open to anyone. Membership applications are available from the Secretary, listed below.

Dues are \$5.00 per fiscal year (ending in June).

Life Membership is also available.

Contact the Secretary for details.

**Articles for publication should be sent to the
President/Editor at address below.**

OFFICERS

President

Dr. Everett L. Parker (2003)
HC 76, Box 32
Greenville, ME 04441-9727
(207) 695-3163 (Voice and Fax)
e-mail - eparker@midmaine.com

Vice President

Mr. Jim Foote III (2002)
P.O. Box 16
Manchester, ME 04351-0016

Secretary

Mr. Bruce Hazelton (2003)
P.O. Box 67A
Cumberland Center, ME 04021

Treasurer

Mr. Rick Stambaugh (2002)
16 Elmwood Ct.
N. Berwick, ME 03906
e-mail - rickstambaugh@cybertours.com

BOARD OF DIRECTORS

Richard Warren of Cushing (dickw@midcoast.com) (2002)
Ray Gagnon of Lewiston (2002)
Max L. Lynds of Houlton (Max@pwless.net) (2002)
John E. Engle, M.D. of Waterville (jengle@mint.net) (2002)

PUBLISHING SCHEDULE

The Maine Philatelist is distributed to members in January, April, July and October of each year. Below is a list of deadlines for each issue and the anticipated mailing date. While deadline for copy (articles) is firm, the anticipated mailing date is just that -- a "best guess" of mailing.

ISSUE COVER DATE	DEADLINE FOR COPY	JOURNAL TO PRINTER	ANTICIPATED MAILING DATE
January	Dec. 15	Dec. 30	Jan. 15
April	March 15	March 30	April 15
July	June 15	June 30	July 15
October	Sept. 15	Sept. 30	Oct. 15

Maine stamp club meetings



Stamp clubs in Maine are invited to become members of the Maine Philatelic Society. We will publish, free of charge, meeting information and locations.

WATERVILLE STAMP CLUB

The club meets on the first and third Friday from September to May and on the third Friday only during June, July and August. Meetings are from 6:30 to 9 p.m. at the Kennebec Valley Technical College (KVTC) on Western Avenue in Fairfield (Exit 35 of Interstate 95). For information, call 872-5107. Nonmembers are invited to attend.

BELFAST STAMP CLUB

The club meets on the third Thursday of the month at noon. The location changes each month. For information, call Dick Gerry, president, at 866-3583.

YORK COUNTY STAMP CLUB

The club meets on the second and fourth Thursday of each month beginning at 7:30 p.m. at the Sanford Masonic Hall, Elm Street, Sanford. Usual events include raffle, auction, presentations, refreshments, and an occasional visit from a stamp dealer. Dues are \$5 per year. For information, contact Secretary Tracey Levasseur, 329 Ross Corner Rd., Shapleigh, ME 04076.

UNION RIVER STAMP CLUB

The Union River Stamp Club meets the first Thursday of each month from April through November at the Ellsworth Library, beginning at 6:30 p.m. For information, contact Eric Beal at <Eric_Beal@umit.maine.edu>.

Waterville Stamp Club Show
Saturday, April 27, 2002
Kennebec Valley Technical College
Fairfield
9 a.m. to 4 p.m.
Dealers, silent and oral auction

Postmasters did it, too...

By William W. Sammis

Postmasters, not unlike other citizens, relied on private express companies to transport nonletter material in the 1850s. In 1857 the postmaster of Bradford, Maine had inquired as to the procedure for having a draft delivered to California. The reply was sent in a letter written on August 8, 1857 which was enclosed in a cover handstamped at Bangor, Maine on August 10th, and marked "Free."

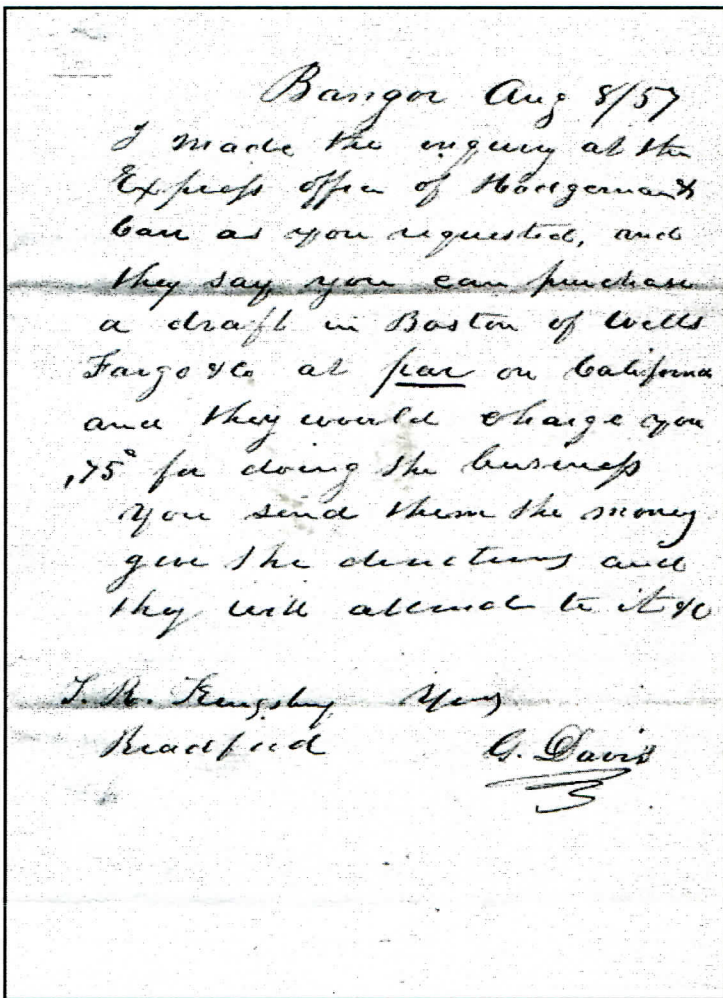
The contents of this letter nicely demonstrates the cooperation between express lines necessary to stretch regional service into a transcontinental network.

Here is the letter transcribed:

Bangor Aug 8/ 57

I made the inquiry at the Express office of Hodgeman (sic) & Carr as you requested, and they say you can purchase a draft in Boston of Wells Fargo & Co. at par on California and they would charge you .75¢ for doing the business/ you send them the money/ give the directions and they will attend to it etc.

(to) T.R. Kingsbury very (truly yours?)
Bradford G. Davis



Continued on page 8

Are YOU on the Internet?

Here is a list of MPS members with e-mail

Joe Antizzo

Joeantizzo@aol.com

Louis C. Bakuka

grampsusn@aol.com

George Barner

gbarner@adelphia.net

Al Barth

cfercat@megalink.net

Chuck Brand

shakerdom@hotmail.com

Tom Cieslinski

singcies@mint.net

Gary Clark

gclark1@tampabay.rr.com

Nancy B. Clark

nbc@Cape.com

David Costain

dcostain@midmaine.com

Dr. John Engle

jengle@gwi.net

Jim Forte

jimforte@postalhistory.com

Dan Goodwin

dgoodwin@psouth.net

Robert Gross

bobgrossrcr@adelphia.net

Terence Hines

TerenceHines@aol.com

Kelvin Kindahl

kanda@javanet.com

Dick Laetsch

precancel@aol.com

Steve LaForge

stephenlaforge@netscape.net

Rick Lancaster

modcover@gwi.net

James Larsen

larsenj@c2i2.com

Philippe C. Lebel

PCLEBEL@hotmail.com

Rev. Robert Leon

aslanleon@altavista.com

Max Lynds

Max@pwless.net

Paul R. Maynard

Maynard25@Charter.net

Vince McDermott

jvmcdermott@junoc.om

Ed Muzzy

edmuzzy17@aol.com

Robert W. Olmsted

cal@americanletters.org

Phil Peverada

peverada@midcoast.com

Thurlow Pitts

antares23@hypernet.com

Jack Pooler

pooler@attbi.com

Steven Pottle

sppride@aol.com

Gil Roderick

destamps@acadia.net

William W. Sammis

cds13@cornell.edu

John E. Sawhill Jr.

bsawhill@gwi.net

Barry Serpell

serpellmaine@aol.com

Roland Simard

manacorp@aol.com

Henry Stevens

hstevens@stamps.win.net

Henry G. Turnbull

AZNPTHGT1@webtv.net

Edwin F. Whitney

edfwhitney@yahoo.com

Richard Williams

richwill@qsilver.net

Kennedy L. Wilson

k-mew@midcoast.com

Comprehensive Maine DOANES listing continues

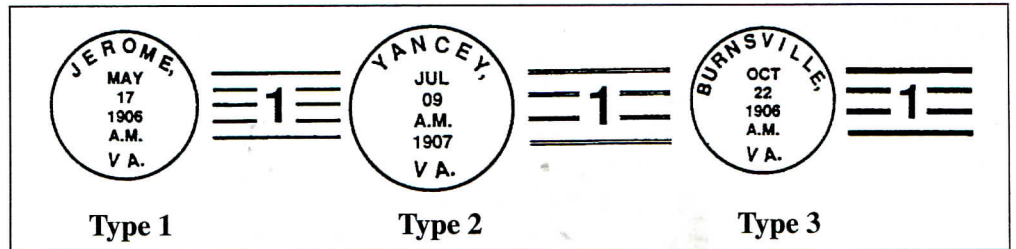
Starting in 1903 and concluding in 1906, the Post Office Department distributed a unique type of rubber handstamp to improve the impression quality of postmarks and cancels. Postal historians now refer to these handstamps as "Doane Cancels" in honor of Edith Doane, who led research into their background and distribution.

Doane cancels are recognizable by a number in the cancel bars. Recent research by Richard Helbock, editor of *La Posta*, revealed a near perfect correlation between the dollar volume of the postmaster's compensation for the year previous to the issue of a Doane cancel and the number appearing in the cancel bars. For example, if a postmaster's compensation was less than \$100, the new cancel contained the numeral "1." When the compensation was between \$100 and \$200, the cancel contained the numeral "2" and so on.

Doanes were issued in different formats that are identified as Types 1, 2 and 3. The numbering of the types is based on their chronological order of

distribution. For example, the five bar Type 1 cancel was issued in 1903 (up to October), the hollow, four bar Type 2 between October 1903 and June 1905, and the solid, four bar from June 1905 to the mid- 1906.

Samples of each type are shown on this page. This is only a brief over-



view of the Doane system. Following is a listing of all known Maine Doanes, provided by Secretary Bruce Hazelton. Corrections should be sent to Mr. Hazelton at P.O. Box 67A, Cumberland Center, ME 04021.

MAINE DOANES

Post Office	Type	No.	Earliest	Latest	Post Office	Type	No.	Earliest	Latest
Pemaquid Beach	3	2	9 Aug 1907	20 Sept 1915	Roxie	3	1	16 Oct 1908	6 Aug 1912
Pemaquid Pt.	3	2	7 July 1906	7 Aug 1911	Rumford	3	1	21 Nov 1907	
Penobscot	2	4	11 Aug 1905	16 July 1907	Rumford Ctr.	2	2	17 May 1904	16 March 1907
Penobscot	2	5	27 July 1905	23 Dec 1924	Rumford Pt.	3	2	17 Dec 1906	24 Dec 1924
Penobscot	3	4	24 Dec 1912	24 Dec 1923	Sabbaday Lake	3	2	30 Oct 1906	21 June 1918
Perham	1	2	8 Oct 1907	26 Aug 1909	Saint Agatha	1	1	14 June 1904	1916
Peru	3	2	31 Dec 1905	20 July 1910(1925)	Saint George	3	2	12 Oct 1906	5 Aug 1912
Phair	1	2	21 April 1906	8 March 1911	Salem	3	2	22 Feb 1907	25 April 1913
Phippsburg	3	3	23 Aug 1906	25 Jan 1915	Scarboro	2	5	4 Aug 1905	19 Aug 1905
Plymouth	3	3	28 Sept 1906	20 April 1907	Scarboro	2	3	13 April 1905	March 1908
Popham Beach	2	3	31 Aug 1905	3 June 1907	Scheedic	2	2	15 Aug 1905	18 Oct 1909
Portage	2	3	6 Sept 1904	16 Sept 1908	Sebago	3	2	21 June 1906	11 Feb 1914
Port Clyde	2	4	25 Sept 1905	24 Aug 1909	Sebec	3	3	13 March 1906	23 May 1912
			"4" upside down	20 Aug 1906	Sebec Lake	2	1	5 July 1904	8 May 1913
Port Clyde	3	4	2 Sept 1906	27 Aug 1909	Sebec Station	3	4	13 Oct 1905	23 March 1912
Pretty Marsh	3	2	8 Sept 1906	28 Feb 1908	Seboeis	2	2	5 Sept 1904	9 Dec 1913
Prides Corner	2	1	4 March 1904	2 May 1904	Seboomook	3	2	24 July 1906	16 May 1912
Prouts Neck	2	1	23 July 1905	28 Aug 1907	Selden	2	1	7 Oct 1903	24 March 1912
Pulpit Harbor	3	2	29 July 1907	29 Dec 1919	Selden	3	1	29 Dec 1914	
					Shapleigh	2	2	28 July 1906	19 Nov 1912
Rawson	3	1	30 Nov 1906		Shawmut	3	4	3 April 1905	27 Feb 1913
Richmond Corner	2	2	23 Aug 1904	24 Aug 1910	Shiloh	2	4	12 May 1906	23 March 1909 '12
Riggsville	3	2	6 Sept 1905	3 Jan 1913	Shirley Mills	3	3	22 Dec 1905	13 Dec 1913
Riley	2	3	22 Aug 1905	29 June 1914	Silvers Mills	2	2	21 Dec 1904	2 Sept 1911
Ripley	3	2	15 Jan 1907	9 April 1919	Smithfield	1	2	1 April 1904	18 Jan 1911
Riverside	2	2	30 Jan 1905	25 Feb 1910	Smyrna	3	1	2 Nov 1906	
Roach River	2	3	1 Sept 1905	10 Sept 1910	Snows Falls	3	1	15 Nov 1907	28 Jan 1911
Robbinston	2	3	3 Dec 1904	26 Dec 1907	Soldier Pond	2	1	8 Oct 1905	11 Oct 1909
Robinsons	3	1	17 May 1910		Sound	2	1	8 Aug 1906	6 May 1912
Rockville	3	1	16 Sept 1907	3 Nov 1909	South Acton	3	1	13 Nov 1905	4 July 1911
Roque Bluff	3	2	7 Aug 1906	22 Dec 1910	South Atkinson	3	1	26 March 1907	24 March 1910
Round Mt.	3	1	8 Aug 1906	31 July 1912					
Round Pond	3	5	23 July 1906	10 Sept 1934					

The list continues in the next issue.

Rare photographs show flooding of old post office

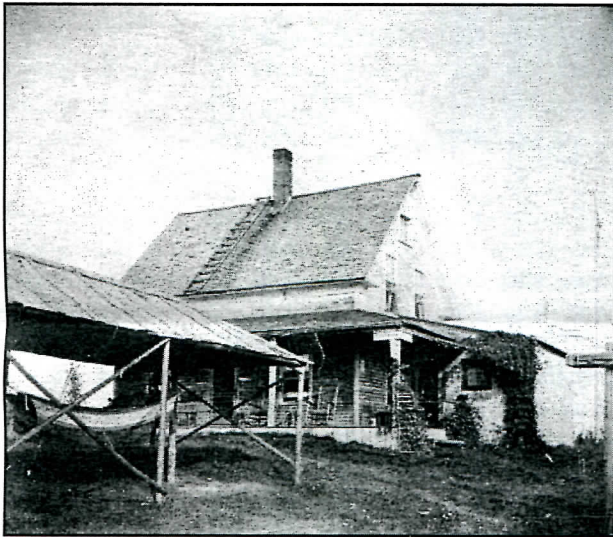
The northern Piscataquis County settlement of Chesuncook Village was once a prosperous and growing community on the shore of Chesuncook Lake. Over the past several decades, however, the settlement has diminished until today, only a couple families live there year-round.

The Chesuncook Post Office was opened on September 29, 1900 in the village at a time when nearly 200 people lived in the area. Chesuncook was a lumbering village and was the location of the famous West Branch log drives.

In 1915, construction started on Ripogenus Dam, about 25 miles from Chesuncook Village. The dam was constructed over a period of several years at the lower end of Ripogenus Lake at the beginning of the Ripogenus Gorge.

by Lonnie Barnes, father of Addie Barnes of Solon. Addie Barnes was a teacher at Chesuncook in the 1920s.

The photographs show the post office building as the waters of Chesuncook Lake were raised. The photograph at left shows the post office building as it was before the lake was raised. There is a canoe shed at left and a small sign on the main building porch points to the "Chesuncook Post Office."



The photograph above shows the buildings as water begins to rise. And the third photograph, below, shows the buildings as the water rises. This photo was taken from a canoe. The post office reopened in another building and eventually closed for good on October 31, 1955.✉

At the time it was completed, Ripogenus Dam was the third largest in the world. Construction materials were shipped to Greenville and then transported by steamer up the east side of Moosehead Lake to Lily Bay. From there, it was trucked overland through Kokadjo and past the Grant Farm and eventually to the construction site.

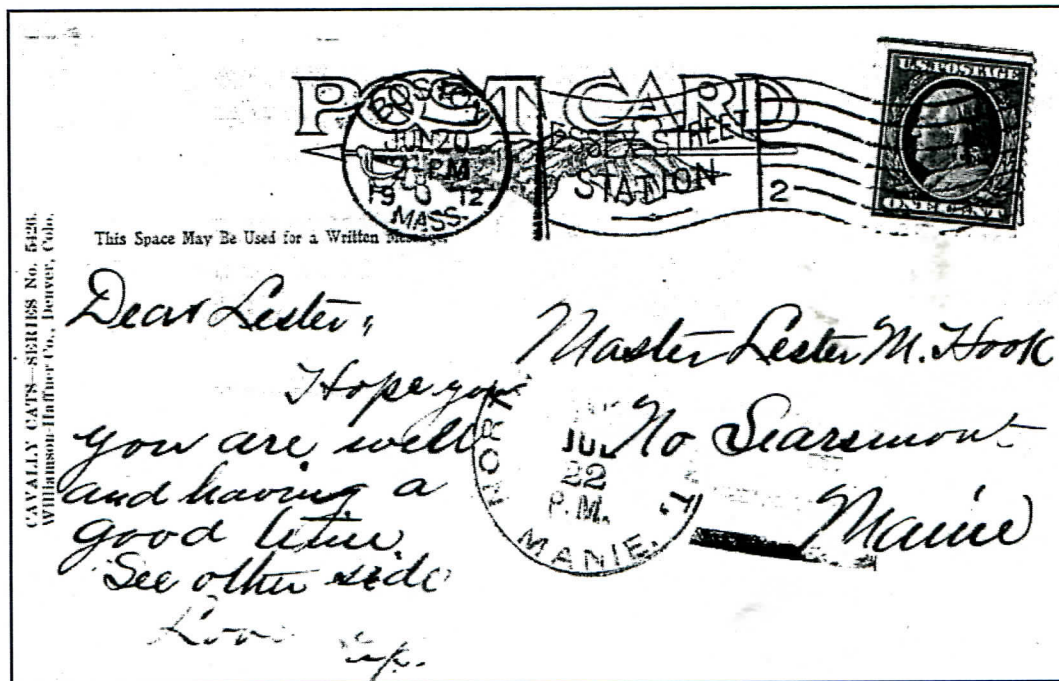
When the dam was completed, the waters of Ripogenus Lake, Caribou Lake and Chesuncook Lake were flowed into one massive lake, now known collectively as Chesuncook. At Chesuncook Village, the water level was raised about 15 feet. Several buildings in the village had to be relocated as well as the cemetery. The burial plots in the cemetery were carefully moved to a hillside behind the Chesuncook Lake House, owned for many years by the late Bert McBurnie and his wife, Maggie. Mrs. McBurnie continues to tend the cemetery during the summer months.

The Chesuncook Post Office at that time was located in the roughly constructed building shown in the accompanying photographs. These three photographs were recently found in a photo album in the archives at the Moosehead Historical Society in Greenville. The photographs were believed taken



A postal history feature
by Rob Washburn
of Skowhegan

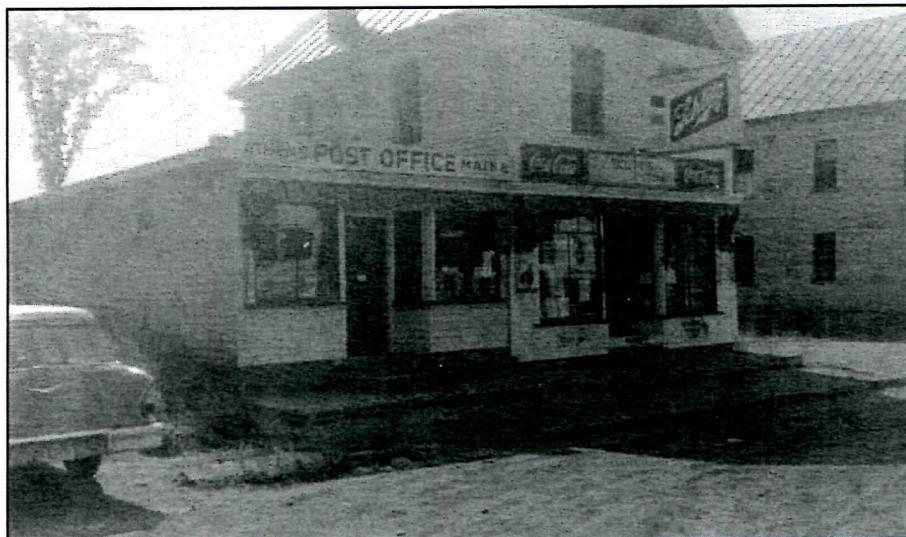
Maine Cover of the Quarter



The above post card features a NORTH SEARSMONT, MANIE” cancel in which the word “MAINE” is misspelled. The North Searsmont Post Office ceased operating on May 15, 1918.

(If you have a candidate for Maine Cover of the Quarter, please send a photocopy of your cover against a black background to Rob Washburn, P.O. Box 840, Skowhegan, ME 04976).

Post Offices of Maine A regular feature



This photo shows the Athens Post Office in Somerset County. The post office was established on January 9, 1819 and is still operating. This photograph is from 1960 and shows the post office next to Scott's Store in the village. Do YOU have a photo of an old post office? Send it to the editor with as much information as you know about it.

Secretary's Report

Bruce Hazelton
Secretary

NEW MEMBER

William Lizotte, 98 Brooklyn Heights, Apt. 5, Morrisville, VT 05661

ADDRESS CHANGES

Leonard Belanger, 25 Second St., Apt. 134, Manchester, ME 04347-1702

George A. Watson, Huntington Common Drive, Apt. 219, Kennebunk, ME 04043

Harold M. Karkos, 1048 Main St., Lot 7, Wilton, ME 04294-3658

Joseph Lupsha, 25 Second St., Apt. 227, Hallowell, ME 04347

Robert Paul Gauvin, 1005 Molunkus Rd., Cornville, ME 04976-6026

Robert C. Harris, 340 Rt. 41, Winthrop, ME 04264

Charles Blood, P.O. Box 261, Belgrade Lakes, ME 04918-0261

J. Walter Allen, 11 Stoney Ridge Rd., Ellsworth, ME 04605-2528

NECROLOGY

#354 Henry Bonsall

#188 Rev. Burton Hoyt

THE CLASSIFIEDS

Classified advertisements are free to members. You may use this space to buy and sell, trade or swap. When sending an advertisement, please mark it for the Classifieds and indicate how many issues you wish it to appear. All ads will appear twice and be removed unless otherwise indicated.

WANTED

Wanted: modern (since 1970) U.S. covers. I am especially looking for junk mail transportation coil PNC covers, Express mail, postage dues, insured mail, Certified mail, auxiliary markings. Rob Washburn, P.O. Box 840, Skowhegan, ME 04976-0840. (4-01)

Wanted: Maine hunting and fishing stamps on license. Will pay a minimum of \$20 each for every license I need. Also want Maine (and other New England states) Old Home Week seals. Terence Hines, P.O. Box 629, Chappaqua, NY 10514-0629. (4-01)

Information needed to further research on Maine NARROW GAUGE RPOs. Need RPO, month, day, year, train no. ME 4 BAR COLORED cancels, need P.O. name, month, day, year, time, color. Will respond to all information received. Bruce L. Corey, 108 Marilyn Ave., Westbrook, ME 04092-4624. (4-01)

Wanted to buy: Maine fancy cancels on cover or postal cards, stampless to 1920 only. Let me know what you have. Gil Roderick, 52 Fern St., Bangor, ME 04401. (4-01)

Collector is looking for covers from Houlton Air Force Base Station. If you have same, please contact me. Telephone: 538-9788 (home) or 532-2291 (work). My e-mail is max@ainop.com Max Leigh Lynds, P.O. Box 761, Houlton, ME 04730-0761. (4-01)

Wanted: perfins used in Maine, on cover or off (with good town cancels). Special interest in AJS (Auburn) and RB (Bangor) -- users not yet identified. Will buy or trade. Vince McDermott, 53 Willow Grove Rd., Brunswick, ME 04011-2969. (4-01)

We urgently need quantities of used Japanese stamps from the period of 1876 (Old Koban Series) through 1955. Dealer stocks, accumulations, bundle material from this period needed for our specialist customers. Will buy anything and everything (used only) at fair prices or will select only what we must urgently need at near to full Scott retail. Prompt payment always. Forty-five years in the trade! John B. Head, P.O. Box 7, Bethel, ME 04217. (4-01)

Wanted: Maine Express Covers (and others): with labels, hand-

stamps, manuscript markings or cornercards. Express Company labels and stamps (such as for newspapers, parcels or free franking) off cover also sought. William W. Sammis (Bill), 436 Thomas Rd., Ithaca, NY 14850-9653. (4-01)

Wanted: Early USN postcards of battleships with ship cancels before 1920 (called classics): BB2 USS *Massachusetts*, BB4 USS *Iowa*, BB5 USS *Kearsage*, BB7 USS *Illinois*, BB8 USS *Alabama*, BB9 USS *Wisconsin*. I have other BB covers and postcards for trade. Also interested in topicals, especially flowers on stamps, and Antarctic stamps. Louis C. Bakula, P.O. Box 150, West Poland, ME 04291-0150. (4-01)

Wanted: Any PPC with Lake Cobbesseeconte (Manchester, Maine as well). Also any PPC with rural railroad scenes as well as RPO covers in the lower price range. Gary Clark, 3607 Landings Way Dr., Apt. 107, Tampa, FL 33624. (4-01)

Wanted: Postal history of Pitcairn Island in the South Pacific, St. Pierre & Miquelon and Newfoundland. Some stamps also needed. Let me know if you have anything to offer. Everett L. Parker, HC 76, Box 32, Greenville, ME 04441 (4-01)

FOR SALE

Precancel approvals: town and types 15¢, classics, 1922-26 general, bicents, prexies, perfins available. Buro approvals starting at 5¢. Good mixed precancel lots. 2,000-\$25.00; 10,000-\$110.00. Mixed buros, 2,000-\$25.00, 10,000-\$110.00. Dick Laetsch, 108 Ashswamp Road, Scarborough, ME 04074. e-mail: precancel@aol.com (4-01)

For sale: DPO, Macy, ME - Doane 1906 on PPC, Rarity 8. First \$75.00 takes it. Carl A. Burnham, RR1, Box 559, Limington, ME 04046. Telephone 637-2871. (4-01)

For sale -- helping friend dispose of father's collection. Sheets, blocks, booklets, assorted postage at face. Airmail, singles, blocks half of catalogue value. Mint postal cards, postal reply cards. Please ask by Scott number. Charles Boudreau, 37 Center St., P.O. Box 498, Machias, ME 04654-0498. Telephone 255-3918. (2-02).

Postmasters did it too...

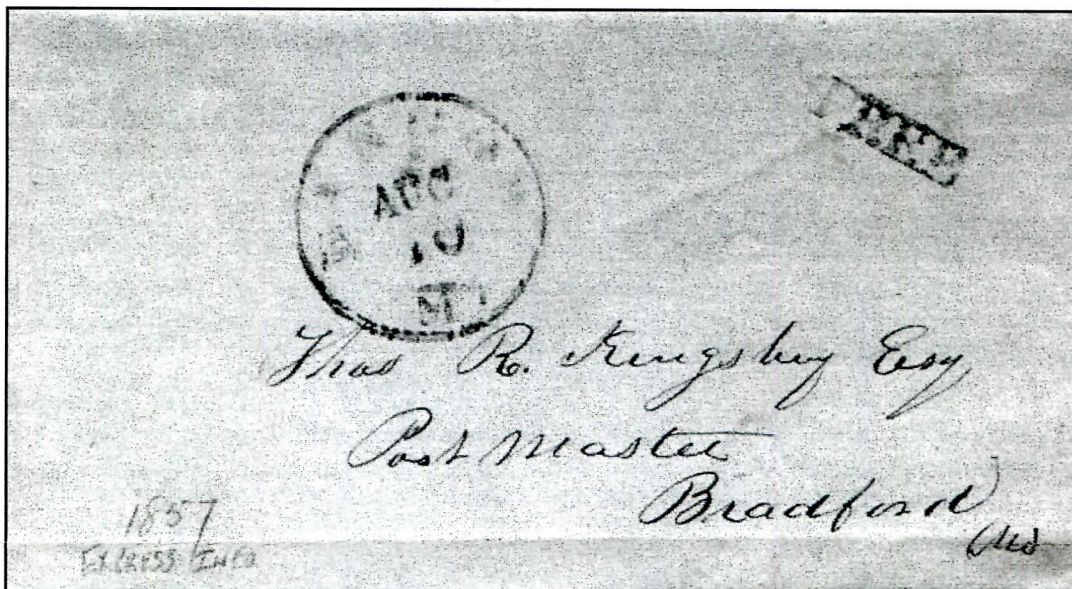
Continued from page 3

The Hodgman, Carr & Company Bangor Express was formed in 1854 through the merger of Hodgman & Company's Boston & Bangor Express with Carr's Bangor Express. It utilized the steamer *Daniel Webster* on the Penobscot River.

In May of 1857, well prior to this letter being written, Hodgman, Carr & Company was consolidated into the Eastern Express Company. F.H. Hodgman remained at the Bangor office. For almost 10 years after this consolidation, the com-

panies involved continued to use their original company names. It is therefore not surprising that the writer referred to the Hodgman, Carr & Company and not the Eastern Express Company.

Bradford is located approximately 22 miles north of Bangor. Free mail privileges were applied to incoming mail for postmasters as well as to their outgoing letters. Therefore, this letter could have been from a private citizen and not necessarily from an employee of the Post Office Department. ☒



Maine Philatelic Society
HC 76, Box 32
Greenville, ME 04441-9727



TO:

(6-02)#549
KINDAHL MR KELVIN
29 CLARK ST
EAST HAMPTON MA 01027-2329

IMPORTANT NOTICE:
If (6-01) appears after your name on the mailing label, it's time to renew your dues!

