

# Ashland Postal History

## Aroostook County, Maine

Last update for this page: 29 January 2024

This page is part of the Maine Postal History website— hosted by [mainephilatelic.org](http://mainephilatelic.org), the website of the Maine Philatelic Society. For more information, see <http://www.mainephilatelic.org/mph>

---

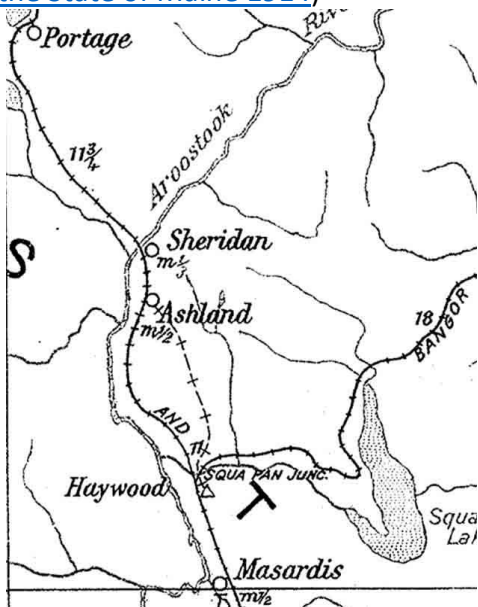
Ashland was incorporated on February 18, 1862, from the township of T11 R5 WELS. In 1869 its name changed to Dalton, then back to Ashland in 1876. Sheridan plantation was organized on May 21, 1878, from T12 R5 WELS, then annexed by Ashland in 1901 to form its present boundaries.

During the history of the town of Ashland, there have been two post offices.

Briefly, the history of these two is as follows:

1. **Aroostook** post office was established on 1 July 1843 and was renamed on 15 June 1868 as **Ashland** Post Office, which is still operating.
2. **Sheridan** post office was established on 9 November 1901 and is still operating.

In 1914, there were two post offices in Ashland: Ashland and Sheridan. (source: [Post Route Map of the State of Maine 1914](#))



Post Offices from Ashland are listed below. In addition, postmarks that collectors have provided from the town of Ashland for this project have been included.

[Aroostook](#)

[Ashland](#)

[Sheridan](#)

## Aroostook

1 July 1843:

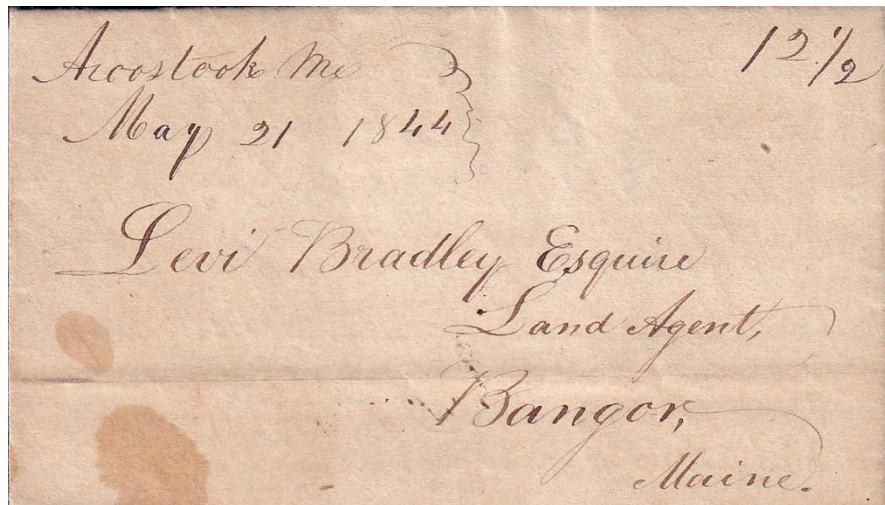
Aroostook Post Office opened.

1 July 1843:

Eldridge G. Wakefield became the Postmaster for Aroostook Post Office.

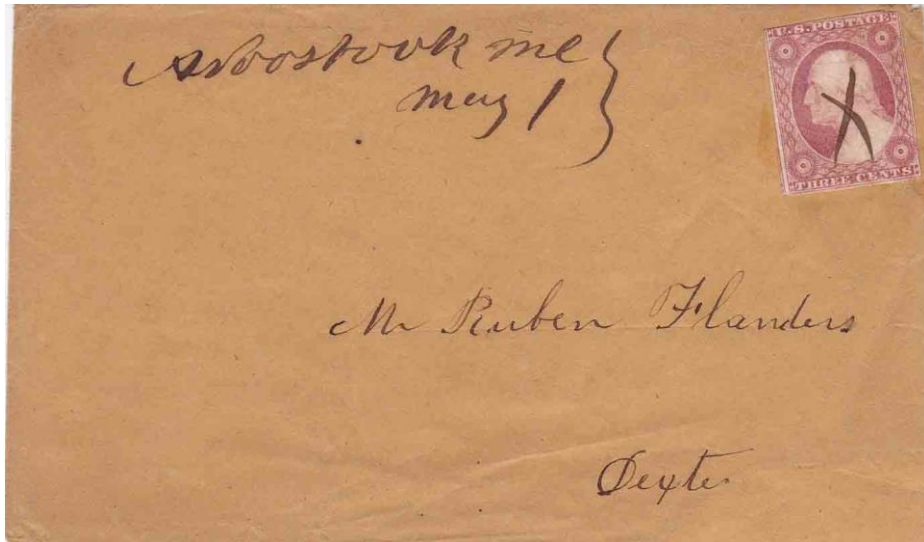
26 March 1844:

David Dudley became the Postmaster for Aroostook Post Office.



21 May 1844:

Single Sheet Folded Stampless Letter.



1 May unknown year:  
Manuscript postmark and killer.

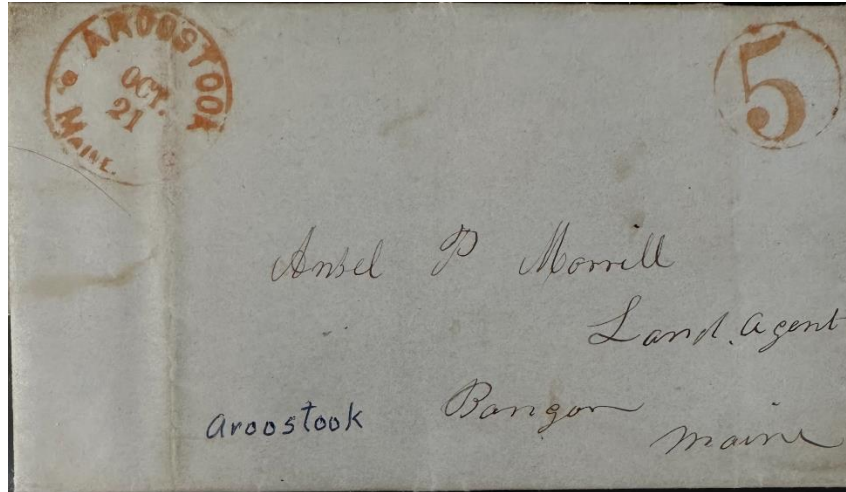
21 August 1846:

Ansel T. Mooers became the Postmaster for Aroostook Post Office.



2 December 1850:

Single Sheet Folded Stampless Letter with a circular postmark of 29 mm in diameter and a circled five as a "killer."



21 October 1855:

The circular postmark is 29 mm in diameter with a hand stamped circled 5 "killer."



24 July 1865:

The circular postmark is 33 mm in diameter with a hand-stamped PAID killer.

15 June 1868:

Aroostook Post Office was renamed Ashland Post Office.

## Ashland

15 June 1868:

The former Aroostook Post Office became Ashland Post Office.

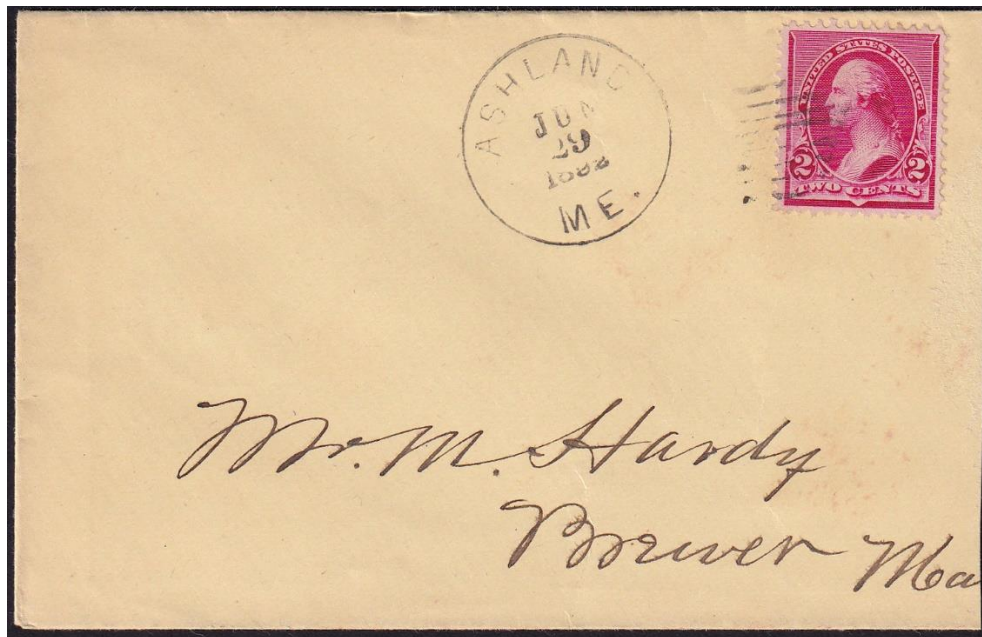
21 August 1846:

Ansel T. Mooers became the Postmaster for Aroostook Post Office and remained Postmaster when Aroostook Post Office became Ashland Post Office.





27 February 1871:  
The circular postmark is 25 mm in diameter with a four-circle target killer.



29 June 1882:  
The circular postmark is 27 mm in diameter with a circle grid killer.

15 September 1882:

Willis P. Bridgham became Postmaster for Ashland Post Office.



24 January 1888: The double-ring postmark is 27 mm in diameter with a target killer. A similar postmark dated 6 August 1888 is known.

24 July 1889:

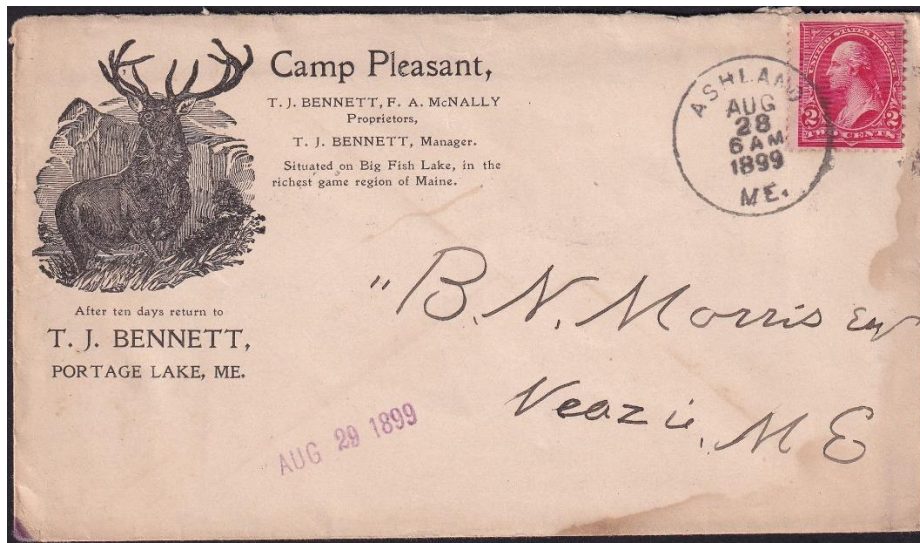
George Henry McNally became Postmaster for Ashland Post Office.

13 July 1893:

William A. Vinal Jr. became Postmaster for Ashland Post Office.

3 April 1897:

Whitefield B. Collett became Postmaster for Ashland Post Office.



28 August 1899:

The circular postmark is 28 mm in diameter, and the CDS is used as a killer.



1 January 1911:

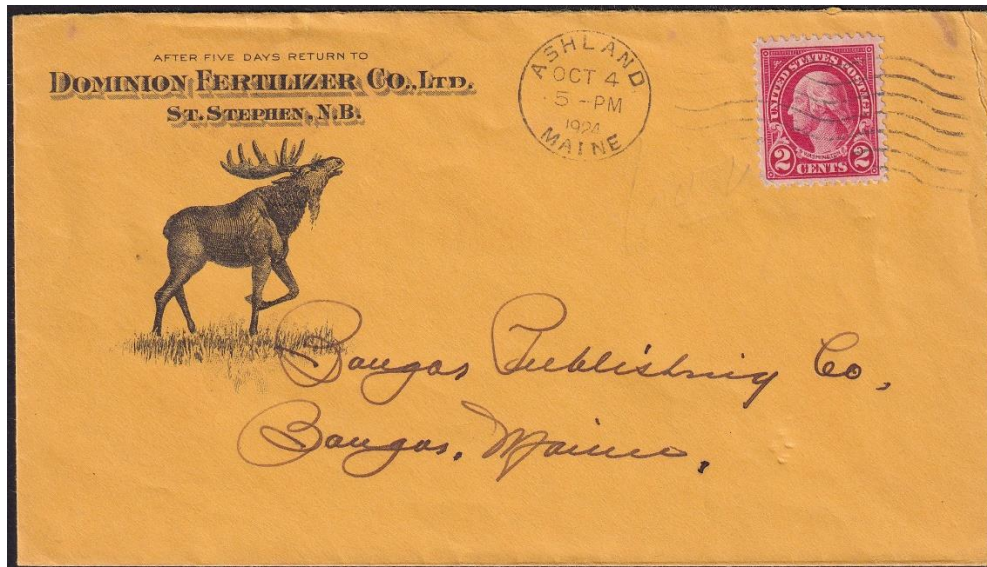
Ashland Post Office became Presidential.

16 December 1915:

Harry A. Greenwood became Postmaster for Ashland Post Office.

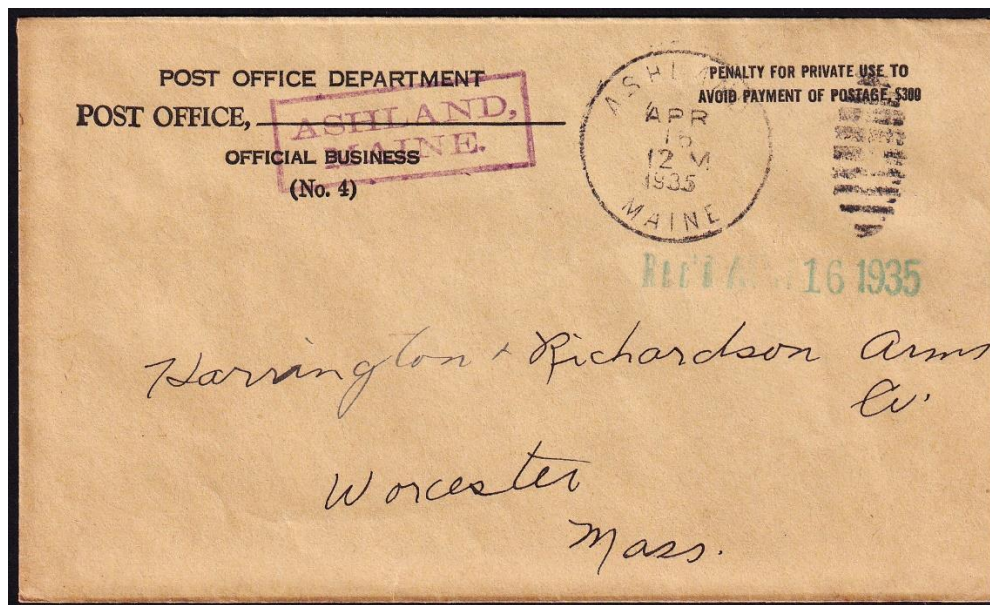
26 February 1924:

Hugh Haywood became Postmaster for Ashland Post Office.



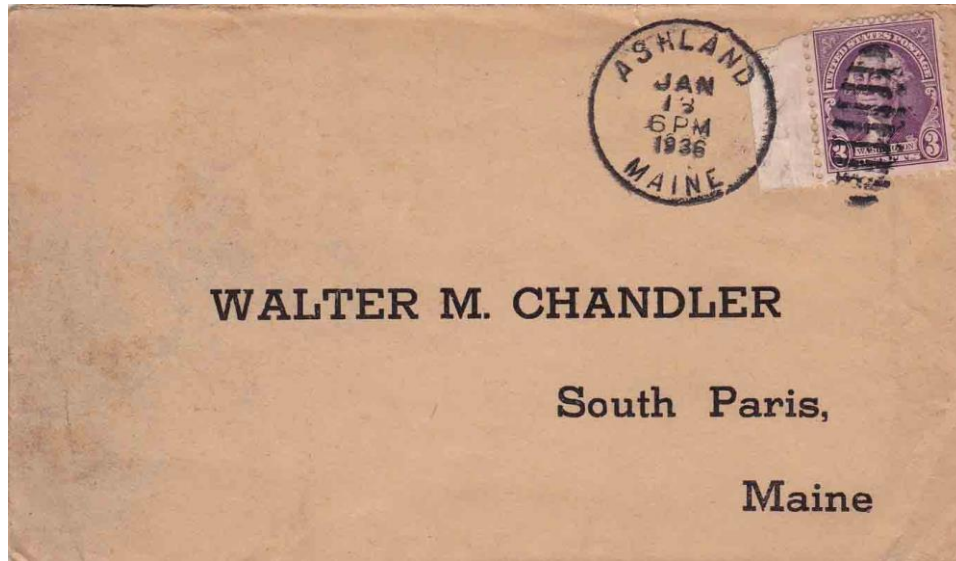
4 October 1924:

The circular postmark is 22 mm in diameter with a machine, seven wavy line killer.



15 April 1935:

The circular date stamp is 29 mm in diameter with a nine-bar elliptical duplex killer.



19 January 1936:

The circular postmark is 28 mm in diameter with a nine-bar elliptical duplex killer.

28 May 1936:

Ralph H. Egan became Postmaster for Ashland Post Office.

31 December 1970:

Eben J. Ellis became Officer-in-Charge for Ashland Post Office.

17 July 1971:

Eben J. Ellis became Postmaster for Ashland Post Office.

25 May 1989:

Randy P. Michaud became Officer-in-Charge for Ashland Post Office.

11 September 1989:

Richard Hunt became Officer-in-Charge for Ashland Post Office.

21 October 1989:

William T. Hay became Postmaster for Ashland Post Office.





Ashland Post Office, photo from 1992 or earlier

3 May 2006:

Ruthine A. Lilley became Officer-in-Charge for Ashland Post Office.

14 October 2006:

Ruthine A. Lilley became Postmaster for Ashland Post Office.



Ashland Post Office in April 2012

29 January 2015:

Stuart G. Turner became Officer-in-Charge for Ashland Post Office.

18 April 2015:

Stuart G. Turner became Postmaster for Ashland Post Office.

Today:

Ashland Post Office is still in operation. The zip code is 04732.

## Sheridan

9 November 1901:

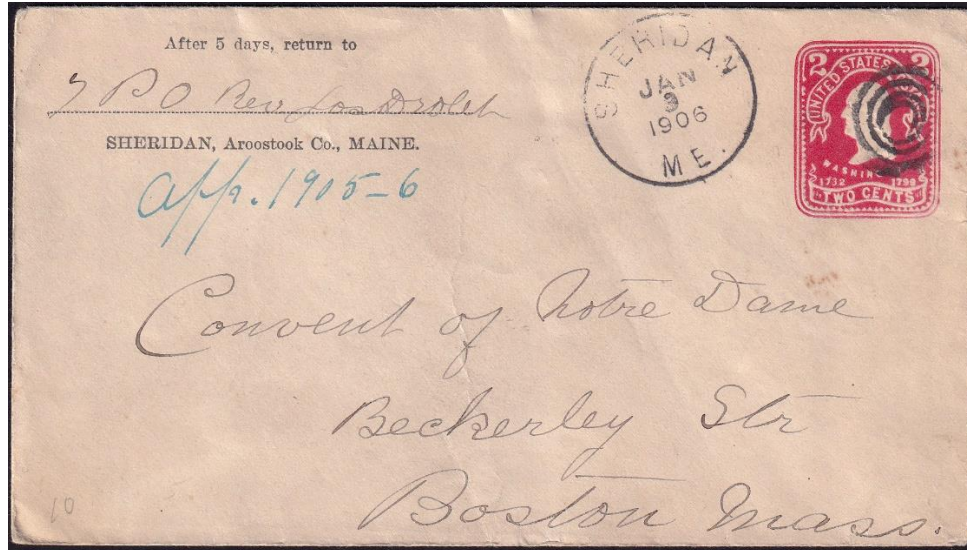
Sheridan Post Office Opened.

9 November 1901:

John W. Perry became Postmaster for Sheridan Post Office.

14 December 1903:

Roderick J. Pomeroy became Postmaster for Sheridan Post Office.



3 January 1908:

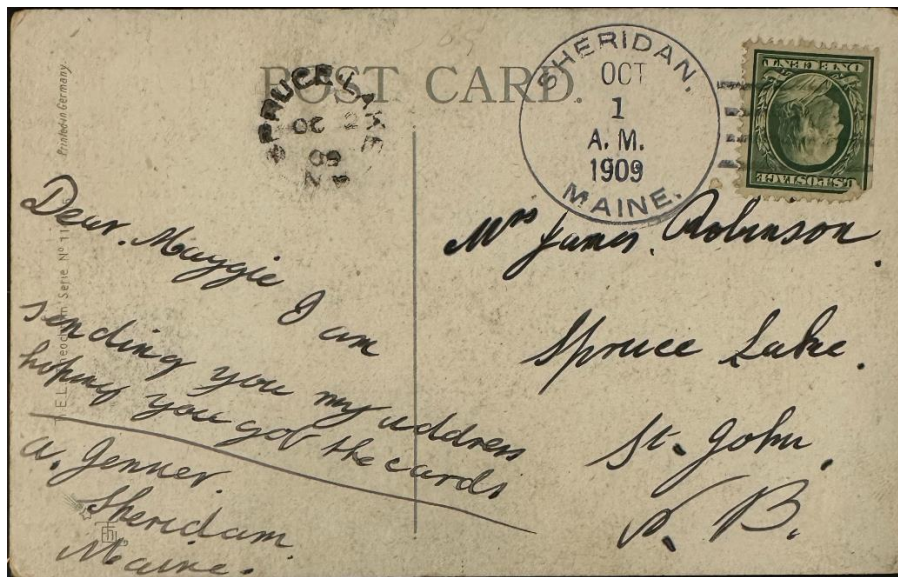
The circular postmark is 29 mm in diameter with a four-circle target killer.

9 August 1909:

Maglorie Chasse became Postmaster for Sheridan Post Office.

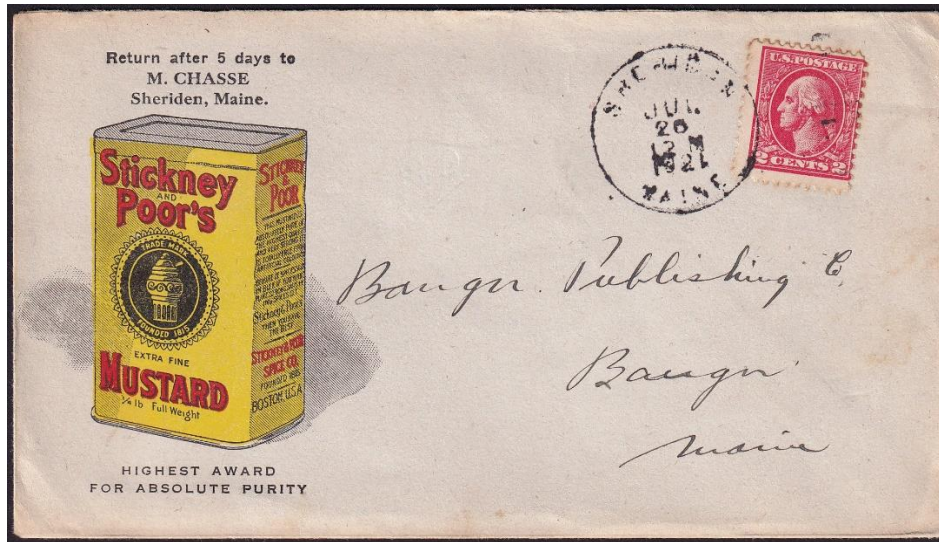


5 August 1909:  
The circular postmark is 32 mm in diameter with a four-bar (A) killer.



1 October 1909:  
The circular postmark is 30.5 mm in diameter with a four-bar (A) killer.





20 July 1921:

The circular postmark is 29 mm in diameter with an unknown type of duplex killer.

31 August 1943:

Ralph Caron became Acting Postmaster for Sheridan Post Office.

1 February 1945:

Ralph J. Caron became Postmaster for Sheridan Post Office.



Sheridan Post Office. Date unknown.

30 December 1966:

Mrs. Rella R. Caron became Acting Postmaster for Sheridan Post Office.

12 April 1968:

Mrs. Rella R. Caron became Postmaster for Sheridan Post Office.

18 June 1987:

Darlene Sullivan became Officer-In-Charge for Sheridan Post Office.



10 June 1997:

The circular postmark is 35 mm in diameter with a four-bar (A) killer.

3 July 1997:

William T. Hay became Officer-In-Charge for Sheridan Post Office.

3 May 2006:

Ruthine A. Lilly became Officer-In-Charge for Sheridan Post Office.

19 January 2013:

Sheridan Post Office, zip code 04775, closed. Mail to Ashland.

---

Credits:

This document is based on the original web page compiled by the V. F. Thomas Co. (2021), with revisions and additions by James Husson and Brian Damien (2023).

Thank you for the contributions to this page by James Husson, The Strout Family, and Max Lynds.

Thank you to the Waterville Stamp Club <https://thewatervillestampclub.com> for helping to assure the continuity of this project.

Sources:

The Post Offices of Maine 2022, Maine Philatelic Society:

<http://www.mainephilatelic.org/books/TPOOM>.

Ashland [map] from the 1877 Atlas of Aroostook County, Maine:

[https://digitalmaine.com/atlas\\_aroostook\\_1877/28/](https://digitalmaine.com/atlas_aroostook_1877/28/)

and Monticello, Ashland Village, Grand Isle [map] also from the 1877 Atlas of Aroostook County,

Maine: [https://digitalmaine.com/atlas\\_aroostook\\_1877/49/](https://digitalmaine.com/atlas_aroostook_1877/49/)

New England Stampless Postmasters:

<https://web.archive.org/web/20230324222654/http://doubledaypostalhistory.com/postmaster/index.php>

National Archives Catalog, Postmaster Appointments for Aroostook County, Maine:

<https://catalog.archives.gov/id/78746425>

Postmaster Finder by City:

<https://about.usps.com/who/profile/history/postmaster-finder/postmasters-by-city.htm>



Additional material, including links to official records of postmaster appointments, can be found at Sources for Researching Maine Post Offices, Postmasters, and Postal History:

<http://www.mainephilatelic.org/books/post-office-sources.pdf>.