

Cross Lake Township Postal History

Aroostook County, Maine

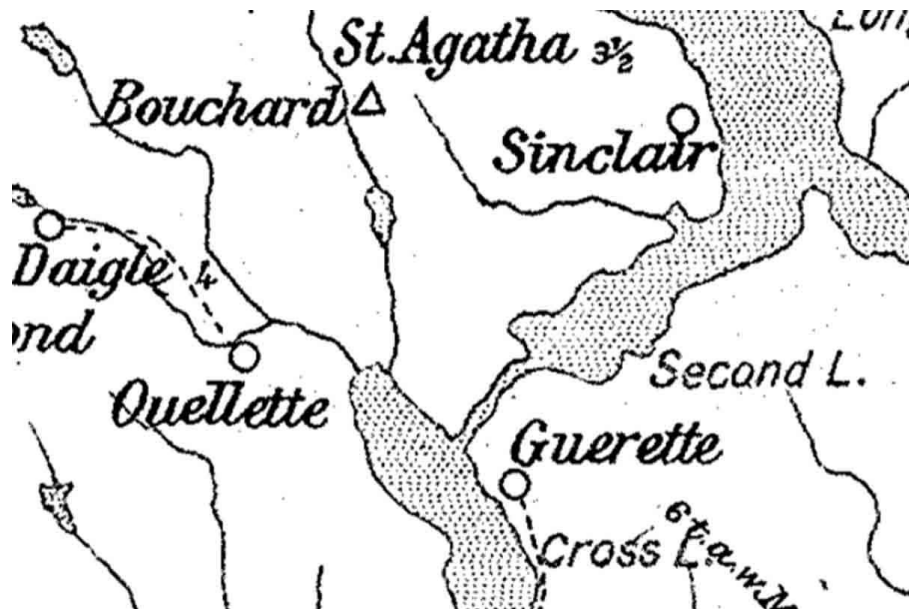
Last update for this page: 30 May 2023

This page is part of the Maine Postal History website—a project of the Waterville Stamp Club.
For more information, see <https://www.thewatervillestampclub.com/mph>.

During the history of Cross Lake Township (T17 R5 WELS) there have been two post offices.

Briefly, the history of these two is as follows:

1. **Guerette** Post Office opened on 17 February 1899 and closed on 14 October 1933.
- 2, **Ouellette** Post Office opened on 12 January 1912 and closed on 2 September 1924



In 1914, there were two post offices in Cross Lake Township: Guerette and Ouellette.

Source: Post Route Map of the State of Maine 1914

<http://www.mainephilatelic.org/PostRouteMaps/MainePostRouteMap1914.pdf>

Post offices from Cross Lake Township are listed below. In addition, postmarks that collectors have provided from the towns/villages associated with Cross Lake Township for this project have been included.

[Guerette](#)

[Ouellette](#)

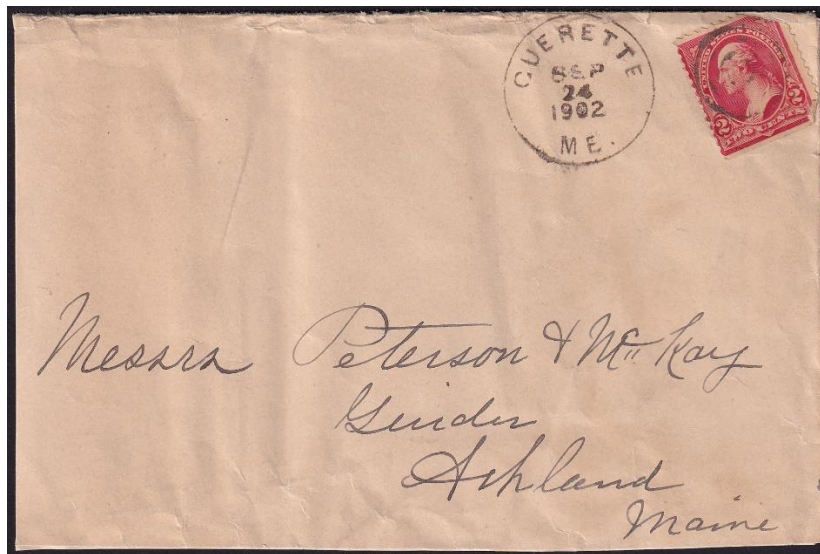
Guerette

17 February 1899:

Guerette Post Office opened.

17 February 1899:

Frank Guerette became Postmaster for Guerette Post Office.

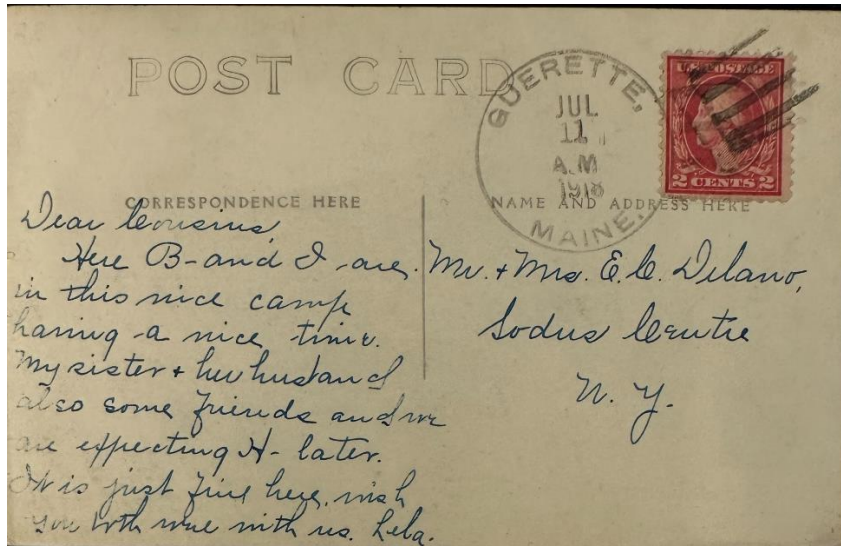


24 September 1902:

The circular postmark is 28 mm in diameter with a four-circle target killer.

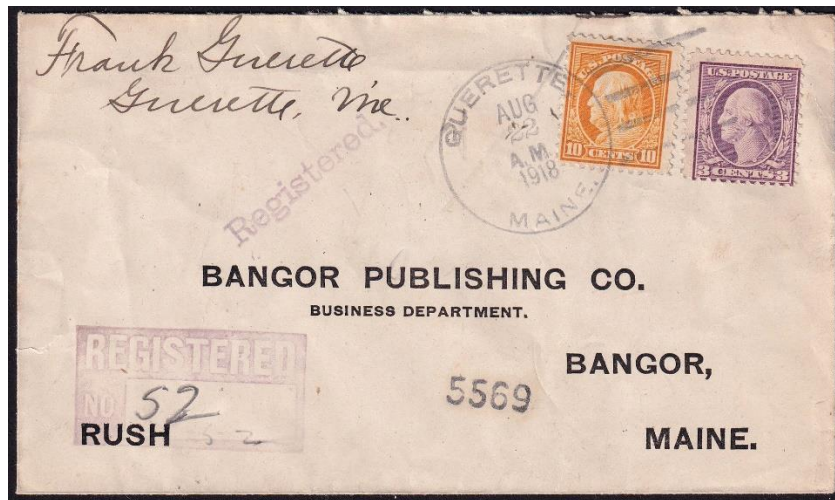
17 February 1914:

Mrs. Ozity St. Peter became Postmaster for Guerette Post Office.



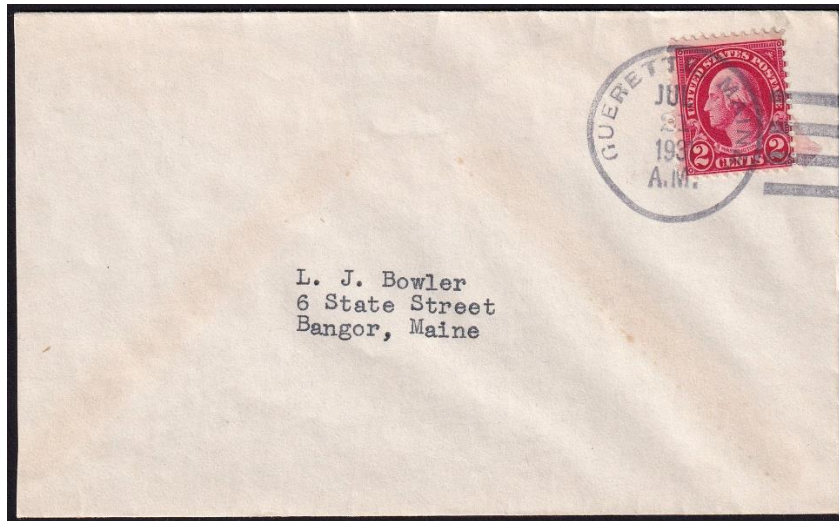
11 July 1918:

The circular postmark is 33 mm in diameter with a non-standard four-bar killer.



22 August 1918:

The circular postmark is 32 mm in diameter with a four-bar (B) killer.



21 July 1931:

The mishappen circular postmark is 32 mm in diameter with a four-bar (B) killer.

1933 October 14:

Guerette Post Office closed - service from Stockholm.

Ouellette

12 January 1912:

Ouellette Post Office opened.

12 January 1912:

Alice Ouellette became Postmaster for Ouellette Post Office.

1924 September 2:

Ouellette Post Office closed – service from Fort Kent.

Credits:

This document is based on the original web page compiled by the V. F. Thomas Co. (2021), with revisions and additions by James Husson and Brian Damien (2023).

Thank you for the contributions to this page by James Husson and Max Lynds.

And thank you to the Waterville Stamp Club <https://thewatervillestampclub.com> for hosting this project.

Sources:

The Post Offices of Maine 2022, Maine Philatelic Society:

<http://www.mainephilatelic.org/books/TPOOM>

1931 U. S. Geological Survey topographic map titled Square Lake, Maine, includes T17 R5 (Cross Lake Township) and the locations of the two villages that had post offices:

https://ngmdb.usgs.gov/ht-bin/tv_browse.pl?id=632577e7e6ed079430fe76f5d43c92ac

Additional material, including links to official records of postmaster appointments, can be found at Sources for Researching Maine Post Offices, Postmasters, and Postal History:

<http://www.mainephilatelic.org/books/post-office-sources.pdf>.