

Crystal Postal History

Aroostook County, Maine

Last update for this page: 7 February 2024

This page is part of the Maine Postal History website—a project of the members of the Maine Philatelic Society. For more information, see <http://www.mainephilatelic.org/mph>.

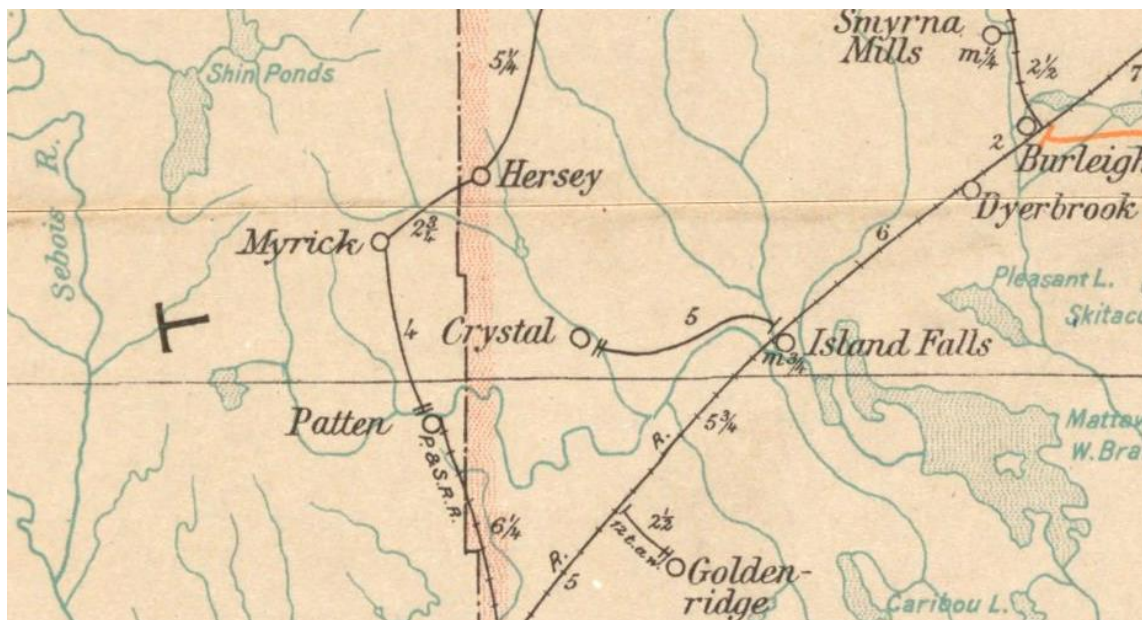
The town of Crystal was first settled in the mid-1800s. Organizing as a plantation was “legalized” by the Legislature on February 21, 1878. It was incorporated as a town on March 21, 1901.

During the history of the town of Crystal, there have been two post offices.

Briefly, the history of these two is as follows:

1. Crystal (1) Post Office opened on 13 February 1868 and closed on 31 July 1869.
2. Crystal (2) Post Office opened on 30 April 1878 and closed on 31 March 1907.

[\(What does it mean when there is a \(1\) or \(2\) after the name of a post office?\)](#)



Source: Post Route Map of the State of Maine, 1903.

<https://collections.leventhalmap.org/search/commonwealth:cj82km77v>

Map reproduction courtesy of the Norman B. Leventhal Map & Education Center at the Boston Public Library.

Post Offices from Crystal are listed below. In addition, postmarks that collectors have provided have been included.

[Crystal \(1\)](#)

[Crystal \(2\)](#)

Crystal (1) Note: There was another post office in Maine named Crystal at a different time and location. The (1) is just a notation. It does not appear in the postmarks and is only used by postal historians and collectors to differentiate between the different post offices.

13 February 1868:

Crystal (1) Post Office opened.

13 February 1868:

Jacob Sanders became Postmaster for Crystal Post Office.

31 July 1869:

Crystal (1) post office closed.

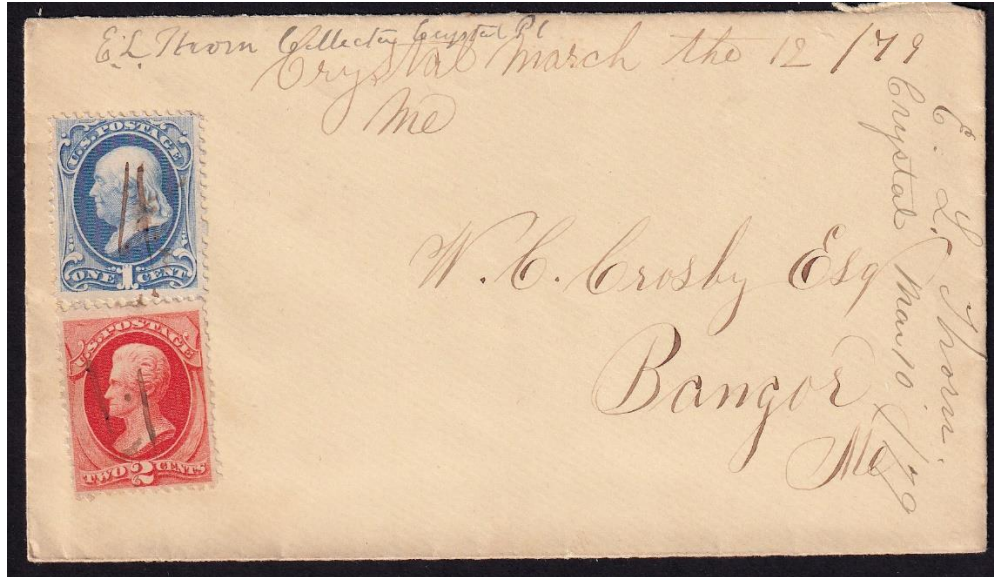
Crystal (2) Note: There was another post office in Maine named Crystal at a different time and location. The (2) is just a notation. It does not appear in the postmarks and is only used by postal historians and collectors to differentiate between the different post offices.

30 April 1878:

Crystal (2) Post Office opened.

30 April 1878:

Eugene L. Thorn became Postmaster for Crystal (2) Post Office.



12 March 1879:
Manuscript with Postmaster signature.

24 April 1879:

Rufus Bliss became Postmaster for Crystal (2) Post Office.

24 July 1879:

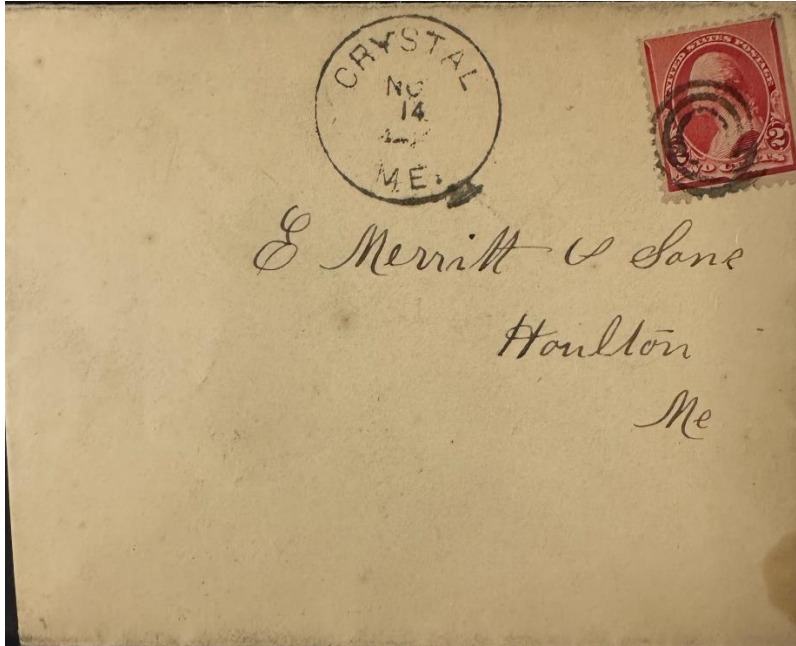
Isaac Webber became Postmaster for Crystal (2) Post Office.

1 March 1886:

Cyrus H. Walker became Postmaster for Crystal (2) Post Office.

25 September 1890:

Miss Edna B. Walker became Postmaster for Crystal (2) Post Office.



14 November 1892:

The circular postmark is 27 mm in diameter with a four-circle target killer.
A similar postmark and killer dated 27 June 1881 is known.

18 October 1894:

Myra E. Emerson became Postmaster for Crystal (2) Post Office.



5 December 1905:

The circular postmark is 28 mm in diameter with two four-circle target killers.

31 March 1907:

Crystal (2) Post Office closed – service from Patten.

What does it mean when there is a (1) or (2) after the name of a post office?

Sometimes the numbers (1) and (2) appear after the name of a post office. These numbers indicate the (first) and (second) localities of post offices of the same name. For example, if the post office name is used for two separate post offices in two respective villages at different times, they will be identified in this manner. These numbers do not necessarily indicate time periods.

These numbers do not represent numbered stations. Some larger places, like Auburn, have postal stations with numbers. These differ from the post offices we call Auburn (1), Auburn (2), etc.

Also: the numbers do not appear in postmarks or official post office publications. However, they are used by postal historians and collectors to refer to different post offices, as noted above.

Credits:

This document is based on the original web page compiled by the V. F. Thomas Co. (2021), with revisions and additions by James Husson and Brian Damien (2024).

Thank you for the contributions to this page by James Husson and Max Lynds.

Thank you to the Waterville Stamp Club <https://thewatervillestampclub.com> for helping to ensure this project's continuity.

Sources:

The Post Offices of Maine 2022, Maine Philatelic Society:

<http://www.mainephilatelic.org/books/TPOOM>

Hersey (T5R5), Dyer Brook Plantation (T5R4), Crystal Plantation (T4R5) & Island Falls (T4R4) [map] from the 1877 Atlas of Aroostook County, Maine:

https://digitalmaine.com/atlas_aroostook_1877/12/

Additional material, including links to official records of postmaster appointments, can be found at Sources for Researching Maine Post Offices, Postmasters, and Postal History:

<http://www.mainephilatelic.org/books/post-office-sources.pdf>.