

Greene Postal History

Androscoggin County, Maine

last update for this page: 5 March 2023

This page is part of the Maine Postal History website—a project of the Waterville Stamp Club. For more information, see <https://www.thewatervillestampclub.com/mph>.

Greene was incorporated as a town on 18 June 1788. During the history of the town of Greene, there have been five post offices. The Town of Greene was part of Lincoln County until 20 February 1799, when it became part of the newly created Kennebec County. It remained in Kennebec County until 18 March 1854, when it became part of Androscoggin County, which was created on that date. Therefore, researchers looking for records for the various post offices in Greene before 1854 should be aware that the information for that timeframe will be found under Lincoln and Kennebec Counties, not Androscoggin.

Briefly, the history of these five post offices is as follows:

1. **Alta** post office was established on 13 June 1900 and closed on 30 June 1910.
2. **East Greene** post office, a private office, operated from 27 March 1830 to 1 March 1838, as part of Kennebec County.
3. **Greene (1)** post office was established on 1 January 1795 as part of Lincoln County. The County changed to Kennebec County on 1 April 1799. (See Lincoln and Kennebec Counties). Renamed as **Greene Depot** post office on 10 December 1849, and then the name reverted to Greene (1) post office on 3 May 1851, still part of Kennebec County. (See Lincoln and Kennebec Counties). Greene became part of Androscoggin County on 31 March 1854. Greene (1) is still operating.
4. **Greene (2)** post office was established on 10 December 1849 and was renamed **Greene Corner** post office on 3 May 1851, both as part of Kennebec County. (See Kennebec County) Greene Corner became part of Androscoggin County on 31 March 1854. Greene Corner operated until 30 June 1902.
5. **North Greene** post office opened on 18 June 1883 and closed on 30 June 1902.



In 1891, there were three post offices in what is now Greene: Greene (1), Greene Corner, and North Greene.

Extract from the 1891 Post Route Map of Maine. Map reproduction courtesy of Norman B. Leventhal Map & Education Center at the Boston Public Library.
<https://collections.leventhalmap.org/search/commonwealth:cj82kj790>

Postmarks from the town of Greene include:

[Alta](#)

East Greene

[Greene \(1\)](#) (see Kennebec County for dates before 31 March 1854)

Greene (2) (See Kennebec County)

[Greene Corner](#) (See Kennebec County for dates before 31 March 1854)

Greene Depot (See Kennebec County)

[North Greene](#)

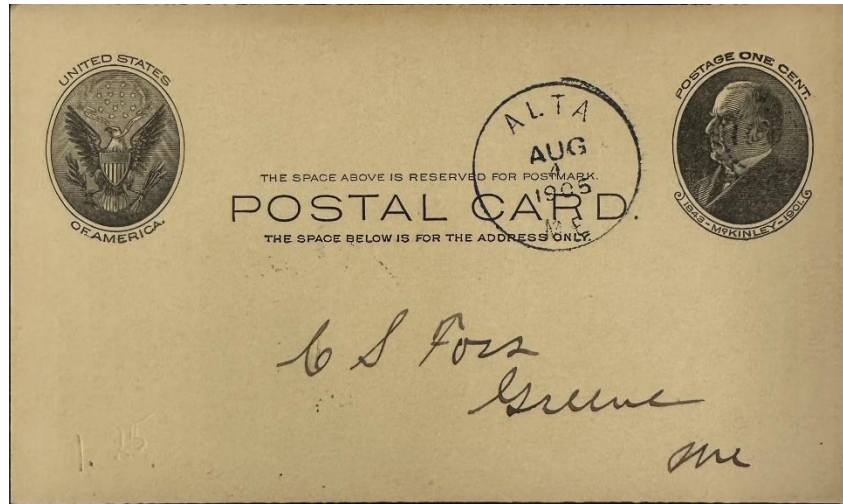
Alta

13 June 1900:

Alta Post Office opened.

13 June 1900:

Mary Stetson becomes Postmaster for Alta



4 August 1905

The circular postmark is 28 mm in diameter with a partial target killer.
(click on the image to enlarge)

30 June 1910:

Alta post office closed.

East Greene:

27 March 1830:

East Greene Post Office opens as a private office.

Postmaster unknown

1 March 1838:

East Greene Post Office closed.

Greene (1)

1 January 1795:

Greene (1) Post Office opens as part of Lincoln County. (Note: There was another post office in Maine named Greene, at a different time and different location. The (1) is just a notation. It does not appear in the postmarks and is only used by postal historians and collectors to differentiate between the different post offices.)

1 January 1795:

Benjamin Merrill 3rd became Postmaster for Greene (1) Post Office.

1 April 1799:

Greene Post Office becomes part of Kennebec County.

13 March 1804:

Luther Robbins became Postmaster for Greene (1) Post Office.

17 September 1840:

Alfred Pierce became Postmaster for Greene (1) Post Office.

10 July 1841:

Nathaniel Robbins became Postmaster for Greene (1) Post Office.

16 August 1843:

Alfred Pierce became Postmaster for Greene (1) Post Office.

29 September 1849:

George H. Dearborn became Postmaster for Greene (1) Post Office.

10 December 1849:

Greene (1) Post Office name is changed to Greene Depot.

3 May 1851:

Greene Post Office is reestablished. Formerly Greene Depot Post Office.

3 May 1851:

William C. Dow became Postmaster for Greene (1) Post Office.

23 April 1853:

Nathaniel Harris became Postmaster for Greene (1).

31 March 1854 County changed to Androscoggin.

27 November 1860: Erastus H. Morse became Postmaster for Greene (1).

15 January 1863: Everett L. Mower became Postmaster for Greene (1).

28 July 1886: Howard W. Gamage became Postmaster for Greene (1).

16 November 1889: Everett L. Mower became Postmaster for Greene (1).

11 April 1893: Howard W. Gamage became Postmaster for Greene (1).

23 November 1893: George E. Parker became Postmaster for Greene (1).

6 October 1897: John M. Sawyer became Postmaster for Greene (1).

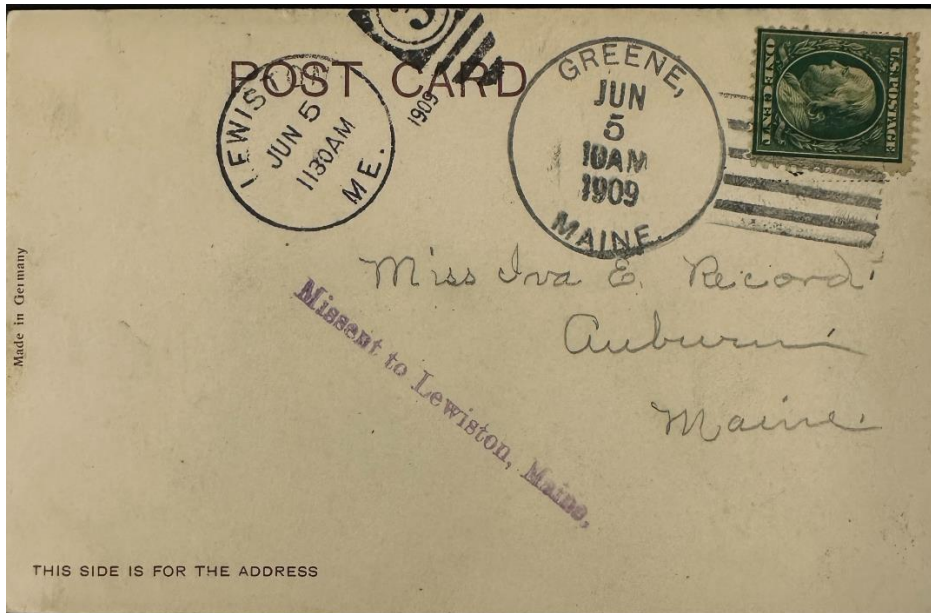
27 July 1899: Lyndon W. Sawyer became Postmaster for Greene (1).



Greene Post Office
Date unknown



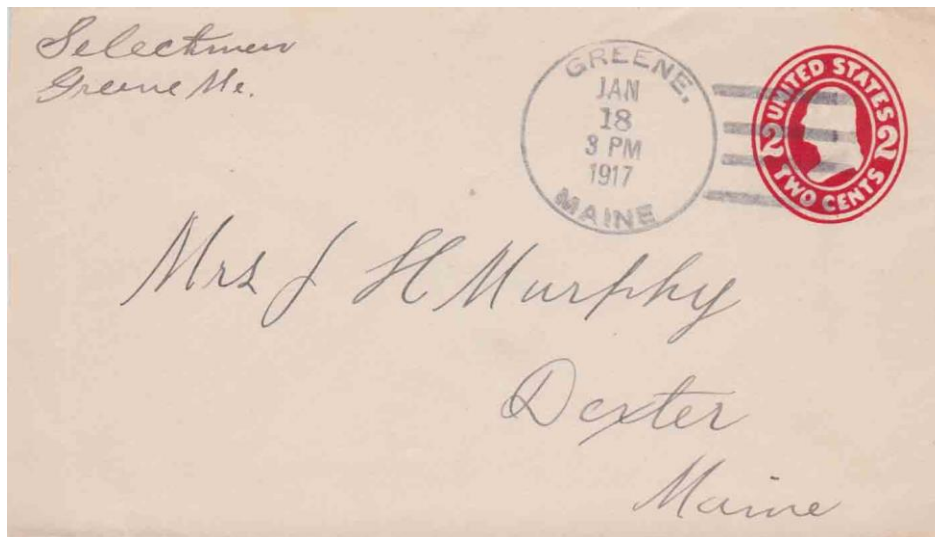
18 June 1907
R.F.D. Type 2F, Route 2 killer.



5 June 1909

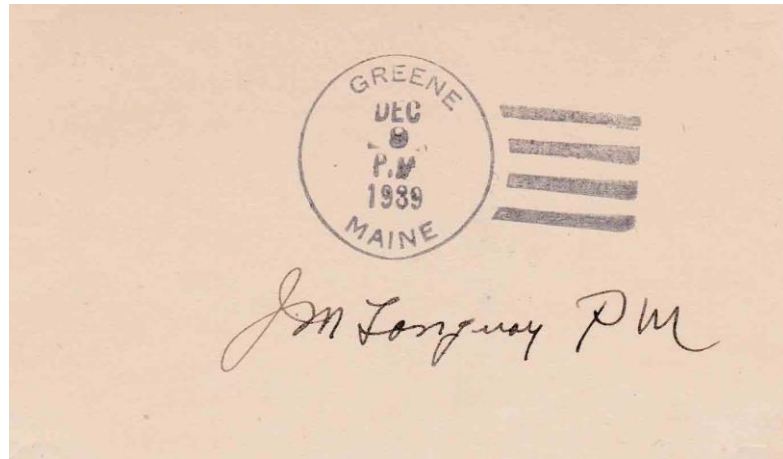
The circular postmark is 32 mm in diameter—four Bar (B) killer.

31 October 1914: Joseph M. Tanguay became Postmaster for Greene (1).



18 January 1917:

The circular postmark is 31–32 mm in diameter. Four Bar (B) killer.



9 December 1939:

The circular postmark is 32–34 mm in diameter—Four Bar (B) killer.

- 30 June 1948: Jean C. Tanguay became Acting Postmaster for Greene (1).
- 14 September 1951: Jean C. Tanguay became Postmaster for Greene (1).
- 1 November 1968: William J. Rowe became Acting Postmaster for Greene (1).
- 12 June 1971: John J. Hovestadt became Postmaster for Greene (1).
- 30 September 1887: Paul E. Watkins became Officer-in-Charge for Greene (1).
- 21 November 1987: Roland M. Landry became Postmaster for Greene (1).
- 5 March 1991: Philip Webber became Officer-in-Charge for Greene (1).
- 1 October 1991: Alfreda E. Richardson became Officer-in-Charge for Greene (1).
- 18 February 1992: Charles W. Ross became Officer-in-Charge for Greene (1).
- 2 February 1993: Carol A. Martin became Officer-in-Charge for Greene (1).
- 12 June 1993: Sherry L. Burrill became Postmaster for Greene (1).
- 30 March 1996: William C. Mann Sr. became Postmaster for Greene (1).
- 10 October 2001: Christopher Choate became Officer-in-Charge for Greene (1).
- 23 February 2002: Alicia S. Gamow became Postmaster for Greene (1).

- 3 March 2003: David Sawtelle became Officer-in-Charge for Greene (1).
- 31 March 2003: Clyde Martin became Officer-in-Charge for Greene (1).
- 19 June 2003: Heather Bilodeau became Officer-in-Charge for Greene (1).
- 20 March 2004: James A. McDevitt became Postmaster for Greene (1).
- 29 April 2004: Daniel A. Bilodeau became Officer-in-Charge for Greene (1).
- 18 September 2004: Daniel A. Bilodeau became Postmaster for Greene (1).
- 28 September 2005: David Shepherd became Officer-in-Charge for Greene (1).
- 18 February 2006: Brenda L. Uhle became Postmaster for Greene (1).
- 27 October 2009: Diane R. Belanger became Officer-in-Charge for Greene (1).
- 17 July 2010: Michael P. Anderson became Postmaster for Greene (1).
- 23 July 2013: David W. Brannon became Officer-in-Charge for Greene (1).
- 25 January 2014: Daniel A. Bilodeau became Postmaster for Greene (1).
- 12 February 2014: Neal R. LaBrecque became Officer-in-Charge for Greene (1).
- 2014 January 2015: William Mourey became Officer-in-Charge for Greene (1).
- 2018 March 2015: Keith D. Greaton became Officer-in-Charge for Greene (1).
- 2012 August 2015: Eric Parmenter became Officer-in-Charge for Greene (1).
- 19 November 2015: Gloria J. Graham became Officer-in-Charge for Greene (1).
- 2018 February 2017: Gloria J. Graham became Postmaster for Greene (1).



2020:

Greene (1) post office. 667 Route 202; Greene, Maine. 04236. Lat./Long.: N 44°11'49" W 70°07'45".

As of 3 March 2023:

Greene (1) post office is still in operation.

Greene (2)

10 December 1849:

Greene (2) Post Office opens as part of Kennebec County. (Note: There was another post office in Maine named Greene, at a different time and different location. The (2) is just a notation. It does not appear in the postmarks and is only used by postal historians and collectors to differentiate between the different post offices.)

10 December 1849:

Elijah Barrell became Postmaster for Greene (2) Post Office.

3 May 1851:

Greene (2) Post Office's name is changed to Greene Corner.

Greene Corner

3 May 1851:

Greene Corner Post Office opens as part of Kennebec County. Formerly Greene (2) Post Office.

10 December 1849:

Elijah Barrell became Postmaster for Greene (2) Post Office and continues through the post office name change.

31 March 1854: County change to Androscoggin

20 April 1853:

Alfred Pierce became Postmaster for Greene Corner and carried on through the county change.

8 May 1860:

Albion Pierce became Postmaster for Greene Corner.

13 July 1863:

Miss Francina Pratt became Postmaster for Greene Corner.

12 July 1894:

Mary H. Mitchell became Postmaster for Greene Corner.

11 January 1896:

Mary H. Close became Postmaster for Greene Corner.



21 September 1896:

The circular postmark is approximately 28 mm in diameter—target killer.

15 December 1896:

Delinda A. Jackson became Postmaster for Greene Corner.

17 December 1900:

Mrs. Clara A. Cole became Postmaster for Greene Corner.



18 June 1900

The circular postmark is approximately 28 mm in diameter—target killer.

27 November 1901:

Sara E. Collar became Postmaster for Greene Corner.

1902 June 30:

Greene Corner post office closes.

Greene Depot

1849 December 10:

The former Greene (1) Post Office was renamed Greene Depot as part of Kennebec County.

29 September 1849:

George H. Dearborn became Postmaster for Greene (1) Post Office and remained as Postmaster as the name changed to Greene Depot Post Office and remained the only Postmaster for Greene Depot.

1851 May 3:

Greene Depot post office was renamed Greene (1) Post Office (see Kennebec County).

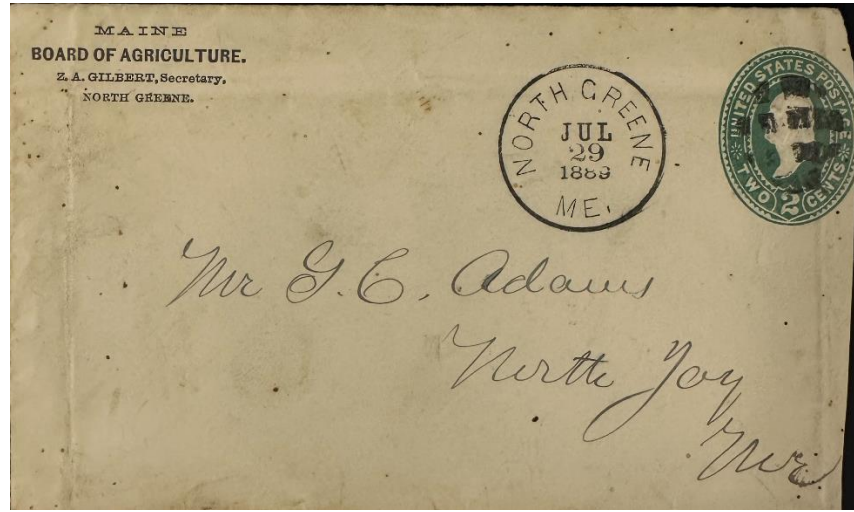
North Greene

18 June 1883:

North Greene Post Office opened.

18 June 1883:

Zeba A. Gilbert became Postmaster for North Greene Post Office.



29 July 1889

The circular postmark is approximately 28 mm in diameter—geometric cork killer.

30 June 1902:

North Greene Post Office closed.

What does it mean when there is a (1) or (2) after the name of a post office?

Sometimes the numbers (1) and (2) appear after the name of a post office. These numbers indicate the (first) and (second) localities of post offices of the same name. If the post office name is used for two separate post offices in two respective villages at different times, they will be identified in this manner. These numbers do not necessarily indicate time periods.

These numbers do **not** represent numbered stations. Some larger places like Auburn, have postal stations with numbers. These are *not* the same thing as the post offices we call Auburn (1), Auburn (2), etc.

Also: the numbers do **not** appear in postmarks or any official post office publications, but are used by postal historians and collectors to refer to different post offices as noted above.

Credits:

This document is based on the original Greene Postal History web page compiled by the V. F. Thomas Co. (2021), with revisions and additions by James Husson and Brian Damien (2023).

Thank you for the contributions to this page by Kelvin Kindahl, James Husson, and the Strout family collection.

And thank you to the Waterville Stamp Club <https://thewatervillestampclub.com> for hosting this project.

Sources:

The Post Offices of Maine 2022, Maine Philatelic Society:
<http://www.mainephilatelic.org/books/TPOOM>

Greene [map] from the 1873 Atlas and History of Androscoggin County, Maine:
https://digitalmaine.com/atlas_androscoggin_1873/18/

Additional material, including links to official records of postmaster appointments, can be found at Sources for Researching Maine Post Offices, Postmasters, and Postal History: <http://www.mainephilatelic.org/books/post-office-sources.pdf>.