

T9 R4 WELS Postal History

Aroostook County, Maine

Last update for this page: 1 July 2024

This page is part of the Maine Postal History website—a project of the Maine Philatelic Society.
For more information, see <http://www.mainephilatelic.org/mph>

Griswold is a sparsely populated place by alongside the railroad, located in Township 9, Range 4 of Aroostook County. A topographic map from the 1980s shows a total of six buildings of any type in the locality at that time.

During the history of T9 R4 WELS, there has been only one post office.

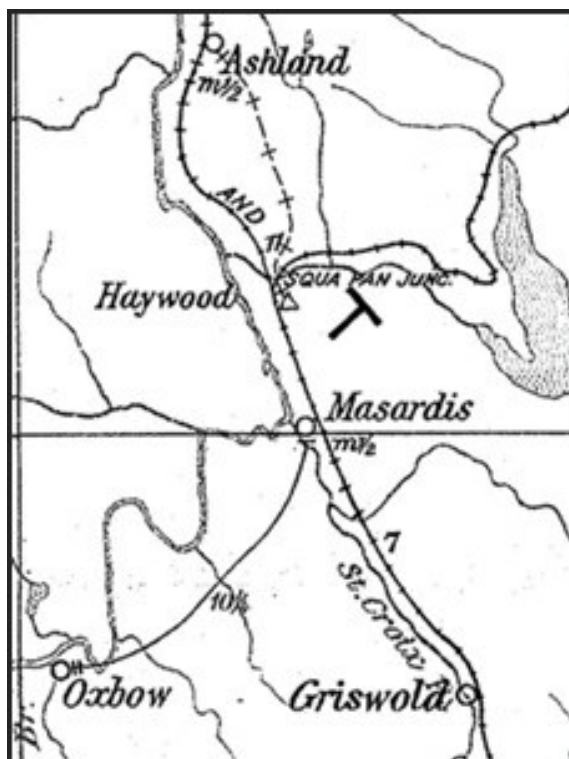
Briefly, the history of this one is as follows:

1. [Griswold](#) Post Office opened on 27 January 1908, closed on 15 August 1923, re-opened on 23 June 1924, and closed on 15 May 1930.

In 1914, there was only one post office in T9 R4 WELS: Griswold.

(source: Post Route Map of the State of Maine 1914.

<http://www.mainephilatelic.org/PostRouteMaps/MainePostRouteMap1914.pdf>)



Griswold

27 January 1908:

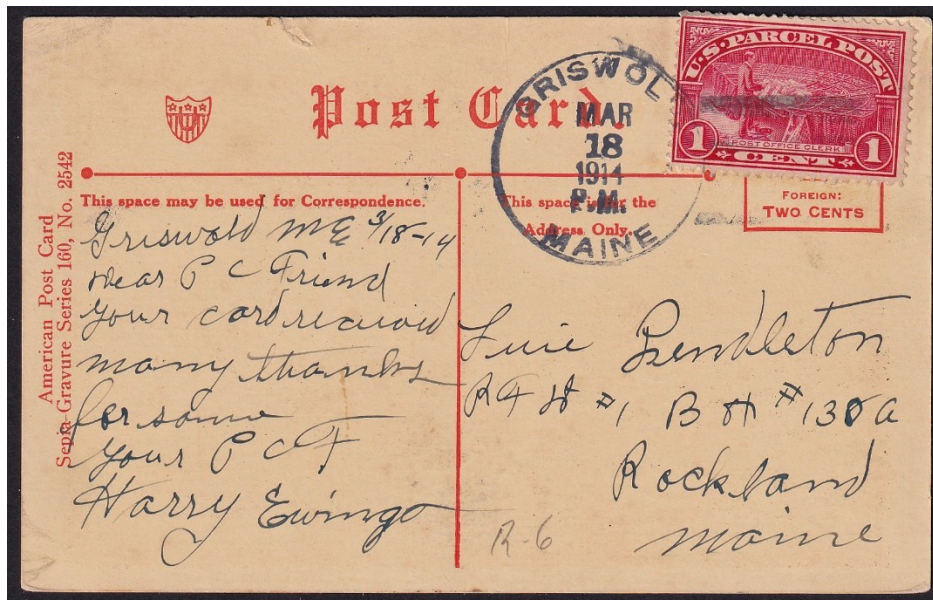
Griswold post office opened.

27 January 1908:

Charles M. Moon became the Postmaster of the Griswold Post Office.

29 April 1913:

Julia M. Ewings became the Postmaster of the Griswold Post Office.



18 March 1914:

The circular postmark is 32 mm in diameter with a four-bar (B) killer.

13 July 1922:

June P. Sutherland became the Acting Postmaster of the Griswold Post Office.

10 August 1922:

June P. Sutherland became the Postmaster of the Griswold Post Office.

9 May 1923:

Norvel W. Kneeland became the Postmaster of the Griswold Post Office.

15 August 1923:

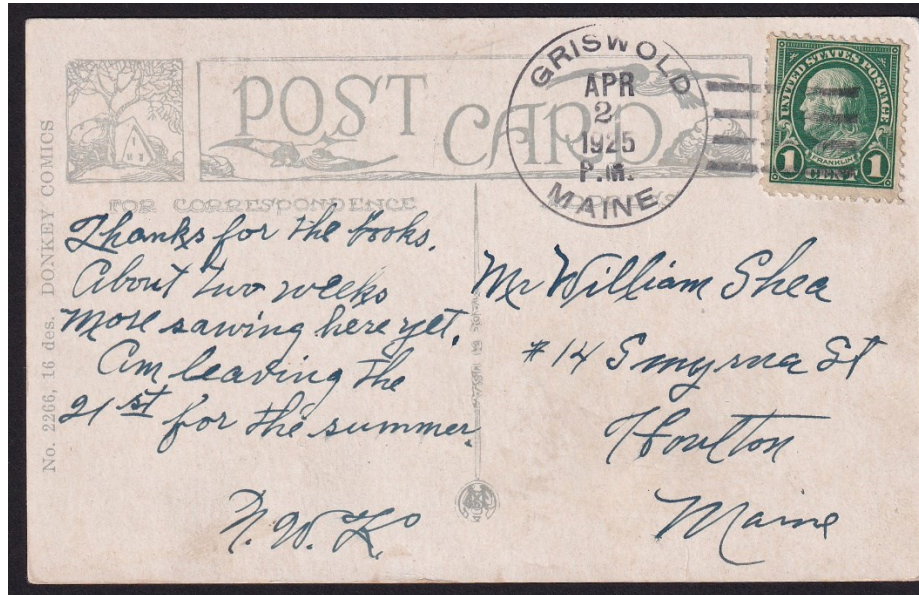
Griswold post office closed service from Masardis.

A

23 June 1924 per Postal Bulletin 13505, 8 May 1924 per Postmaster Appointment records:

Griswold post office re-opened.

23 June 1924 per Postal Bulletin 13505, 8 May 1924 per Postmaster Appointment records:
Norvel W. Kneeland became the Postmaster of the Griswold Post Office.



2 April 1925:

The circular postmark is 31 mm in diameter with a four-bar (A/3) killer.

24 July 1928:

Charles M. Runnells became the Postmaster of the Griswold Post Office.

15 May 1930:

Griswold post office closed; service from Masardis.

Credits:

This document is based on the original web page compiled by the V. F. Thomas Co. (2021), with revisions and additions by James Husson and Brian Damien (2024).

Thank you for the contributions to this page by Max Lynds.

Thank you to the Waterville Stamp Club (<https://thewatervillestampclub.com>) for helping ensure this project's continuity.

Sources:

The Post Offices of Maine 2022, Maine Philatelic Society:

<http://www.mainephilatelic.org/books/TPOOM>

National Archives Catalog: Postmaster Appointments for Aroostook County, Maine

<https://catalog.archives.gov/id/78746425>

Sanders, Christine, The 4-Bar Postmark of the USPS, PMCC Bulletin Reprinted Article, Original Publication Date: June, July & December 2012.

http://www.postmarks.org/resources/PMCC_FourBarCancelsUSPS.pdf

USGS Topographic Map, Oxbow, Maine 1942. Shows Griswold as a location along the railroad, eastern portion of the map.

https://ngmdb.usgs.gov/ht-bin/tv_browse.pl?id=03965d083c0733f84a5e766a97a333b1

USGS Topographic Map, Griswold, Maine 1986. On this map, Griswold consists of a total of six buildings.

https://ngmdb.usgs.gov/ht-bin/tv_browse.pl?id=7f56514c8c8ad03064931cc7027bace1

Additional material, including links to official records of postmaster appointments, can be found at Sources for Researching Maine Post Offices, Postmasters, and Postal History:

<http://www.mainephilatelic.org/books/post-office-sources.pdf>.