

# Harpswell Postal History

## Cumberland County, Maine

Last update for this page: 8 October 2024

This page is part of the Maine Postal History website, a project of members of the Maine Philatelic Society. For more information, see <http://www.mainephilatelic.org/mph>.

---

With 216 miles of ocean shoreline, Harpswell is renowned for its coastal scenery. Geographically, the Town of Harpswell consists of a peninsula (Harpwell Neck) extending from Brunswick, three larger islands (Great or Sebascodegan Island, Orr's Island, and Bailey Island) and many smaller islands. Harpswell is named for a place in Lincolnshire, England.

Legally, Harpswell was first established in 1758 by the Massachusetts General Court as the District of Harpswell, from lands originally in the Town of North Yarmouth. In 1775 the General Court granted full status as an incorporated town to Harpswell.

In the history of Harpswell, there have been 18 post offices.

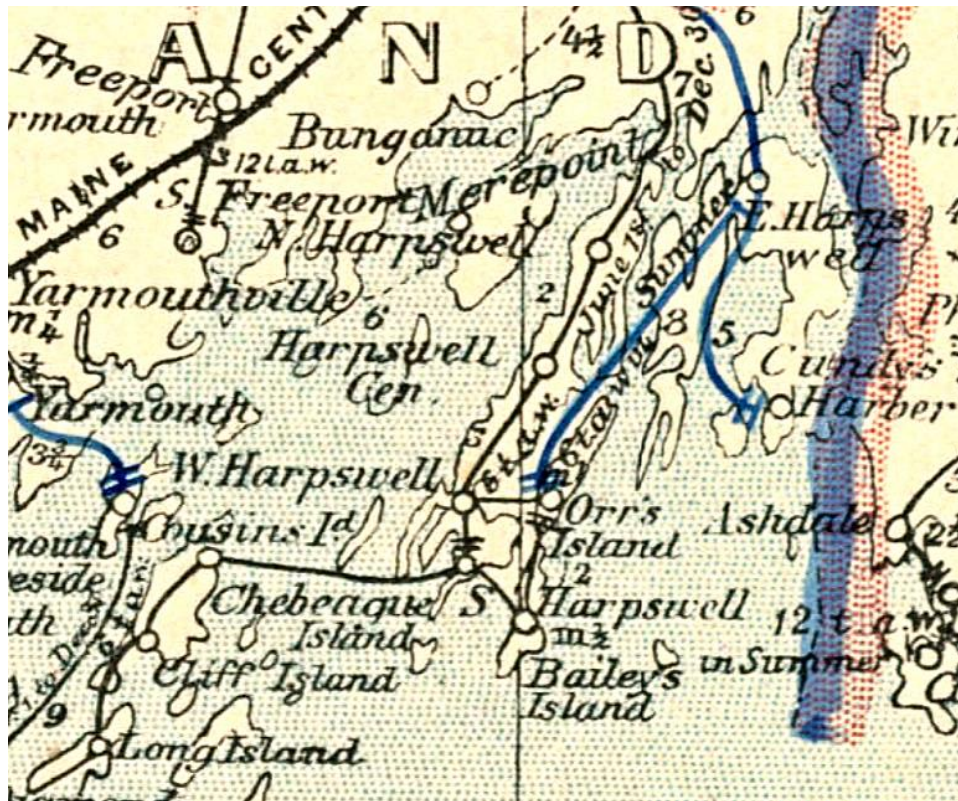
Briefly, the history of these is as follows:

1. [Bailey's Island](#) Post Office was established on 10 April 1888 and changed its name to Bailey Island on 2 March 1892.
2. [Bailey Island](#) Post Office (formerly Bailey's Post Office) opened on 2 March 1892 and is still operating.
3. [Birch Island](#) Post Office was established on 20 June 1902 and closed on 30 June 1964. It was renamed Birch Island RS/RB/CPO Brunswick.
4. [Birch Island RS/RB/CPO Brunswick](#) Post Office (formerly Birch Island Post Office) opened on 30 June 1964 and closed in 1991.
5. [Cundy's Harbor](#) Post Office opened on 20 January 1874 and changed its name to Cundys Harbor in 1894.
6. [Cundys Harbor](#) Post Office (formerly Cundy's Post Office) opened in 1894, closed on 31 December 1918, reopened on 15 April 1919, and closed on 31 October 1958.
7. [Cundys Harbor RS/RB/CPO Brunswick](#) Post Office was established on 18 June 1959 and closed on July 1996.
8. [East Harpswell](#) Post Office operated from 19 May 1868 to 15 April 1899.
9. [Harpwell \(1\)](#) Post Office was established on 20 May 1842; on 13 October 1842, it was renamed Mericoneag Post Office.
10. [Harpwell \(2\)](#) Post Office (formerly South Harpswell) opened on 12 December 1995 (4 March 1996 per local reports) and is still operational.
11. [Harpwell Centre](#) Post Office was established on 25 February 1864 and closed in 1896. Its name was changed to Harpswell Center.

12. [Harpswell Center](#) Post Office (formerly Harpswell Centre) opened in 1896 and closed on 15 April 1899.
13. [Mericoneag](#) Post Office (formerly Harpswell (1) Post Office) opened on 13 October 1842 and closed on 29 July 1846.
14. [North Harpswell](#) Post Office operated from 25 February 1864 until 15 April 1899.
15. [Orr's Island](#) Post Office was established on 13 May 1868 and closed in 1894. Its name was changed to Orrs Island.
16. [Orrs Island](#) Post Office (formerly Orr's Island Post Office) opened in 1894 and is still operating.
17. [South Harpswell](#) Post Office opened on 20 June 1866 and closed on 11 December 1866. It re-opened on 6 June 1878 and was renamed on 12 December 1995 (4 March 1996 per local reports) as Harpswell (2) Post Office.
18. [West Harpswell](#) post office opened on 14 October 1847, closed on 27 May 1854, re-opened on 11 September 1862, and closed on 15 April 1899.

In 1895, Harpswell had eight post offices: at Bailey's Island, Orr's Island, South Harpswell, West Harpswell, Harpswell Center, North Harpswell, East Harpswell, and Cundys Harbor. Source: Post Route Map of the State of Maine, 1895. Map reproduction courtesy of the Norman B. Leventhal Map and Education Center at the Boston Public Library.

<https://collections.leventhalmap.org/search/commonwealth:cj82kk45c>



### Bailey's Island

10 April 1888:

Bailey's Island Post Office opened.

10 April 1888:

David P. Sinnett became the Postmaster of the Bailey's Island Post Office.

2 March 1892:

Bailey's Island Post Office closed and was renamed Bailey Island:

### Bailey Island

2 March 1892:

Bailey Island Post Office (formerly Bailey's Island Post Office) opened.

2 March 1892:

Lendall M. York became the Postmaster of the Bailey Island Post Office.

17 June 1897:

David P. Sinnett became the Postmaster of the Bailey Island Post Office.

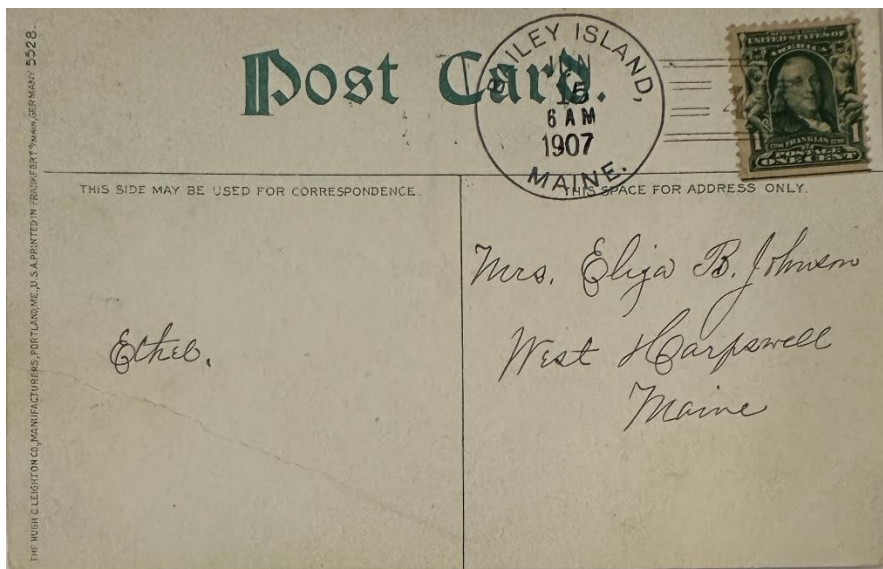


29 August 1902:

The circular postmark is 28 mm in diameter with a four-circle target killer.

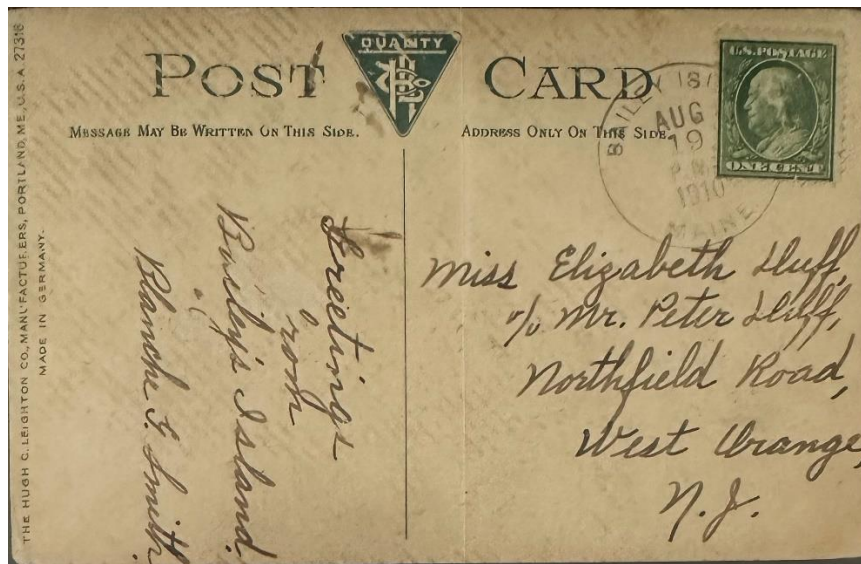
12 March 1903:

Everett E. Sinnett became the Postmaster of the Bailey Island Post Office.



15 June 1907:

The circular postmark is 30 mm in diameter with a Doane 2/4 killer.

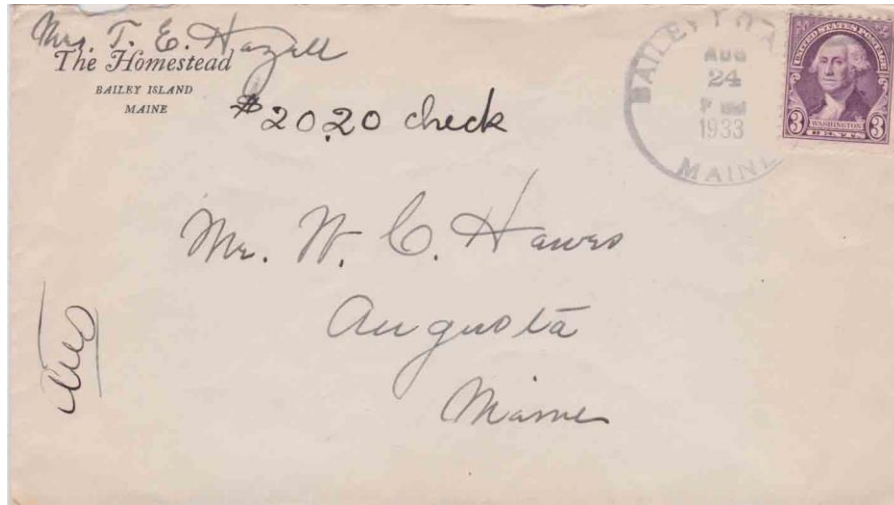


19 August 1910:

The circular postmark is 30 mm in diameter, and the CDS is also used as the killer.

1 January 1923:

Bailey Island Post Office became a Presidential Post Office until 30 June 1930.



24 August 1933:

The circular postmark is 33 mm in diameter with a four-bar C/1 killer.

1 February 1940:

Almira G. Skillings became the Acting Postmaster of the Bailey Island Post Office.

12 September 1940:

Almira G. Skillings became the Postmaster of the Bailey Island Post Office.

11 January 1944:

Mrs. Almira G. Sabine (formerly Skillings, whose name was changed by marriage) became the Postmaster of the Bailey Island Post Office.

5 November 1945:

James E. Herrick became the Acting Postmaster of the Bailey Island Post Office.



29 August 1946:

The circular postmarks are 32 mm in diameter with a four-bar (F1) killer. A similar postmark dated 1 April 1950 is known.

21 July 1947:

James E. Herrick became the Postmaster of the Bailey Island Post Office.

Unknown date:

Unknown person became the Officer-In-Charge of the Bailey Island Post Office.

1 February 1975:

Diane M. Davis became the Postmaster of the Bailey Island Post Office.

25 April 1986:

Charles Blake became the Officer-In-Charge of the Bailey Island Post Office.

21 August 1986:

James F. Hale became the Officer-In-Charge of the Bailey Island Post Office.

27 September 1986:

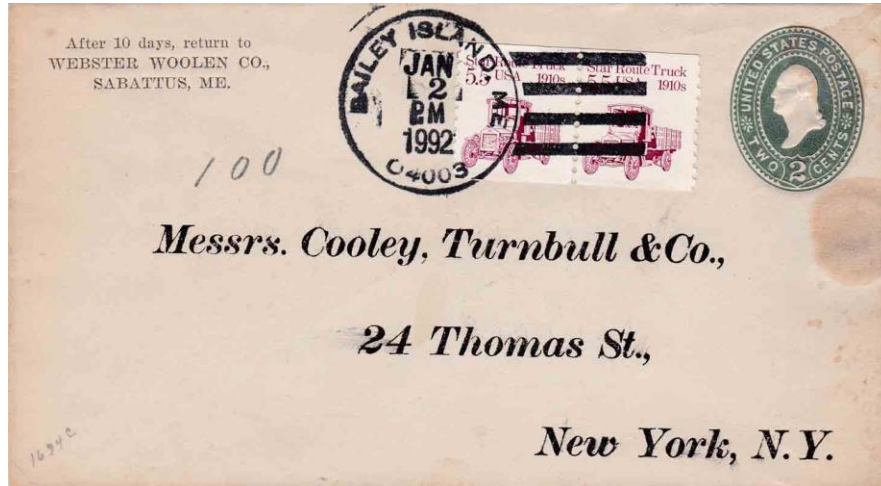
Karlotta N. Whidden became the Postmaster of the Bailey Island Post Office.

17 March 1990:

David Shepard became the Officer-In-Charge of the Bailey Island Post Office.

30 June 1990:

Debra J. (Capsalis) Clark became the Postmaster of the Bailey Island Post Office.  
Debra J. Capsalis' surname changed to Clark on May 11, 1993.



2 January 1992:

The circular postmark is 32 mm in diameter with a four-bar F/2B killer.

3 December 1993:

Bonnie Jo Carter became the Officer-In-Charge of the Bailey Island Post Office.

5 February 1994:

Alicia Kim Doughty became the Postmaster of the Bailey Island Post Office.

2 April 2005:

Sherri L. Thompson became the Postmaster of the Bailey Island Post Office.

3 January 2007:

Barry H. Sloat became the Officer-In-Charge of the Bailey Island Post Office.

25 July 2007:

Aimee Williams became the Officer-In-Charge of the Bailey Island Post Office.

8 November 2007:

Paula Farmer became the Officer-In-Charge of the Bailey Island Post Office.

18 March 2009:

Hope Hyde became the Officer-In-Charge of the Bailey Island Post Office.

1 July 2011:

Nicholas Palestini became the Officer-In-Charge of the Bailey Island Post Office.

13 September 2011:

Joseph Poulin became the Officer-In-Charge of the Bailey Island Post Office.

26 November 2012:

Kimberly Perry became the Officer-In-Charge of the Bailey Island Post Office.

24 August 2013:

Bailey Island Post Office was converted to a Remotely Managed Post Office under the direction of the Postmaster of the Harpswell Post Office.



June 2021:

Bailey Island Post Office-Photo Credit James Husson

5 March 2024:

Bailey Island Post Office is still operational at 2120 Harpswell Island Rd. Bailey Island, ME 04003. GPS 43°44'10" N 69°59'32" W.

## **Birch Island**

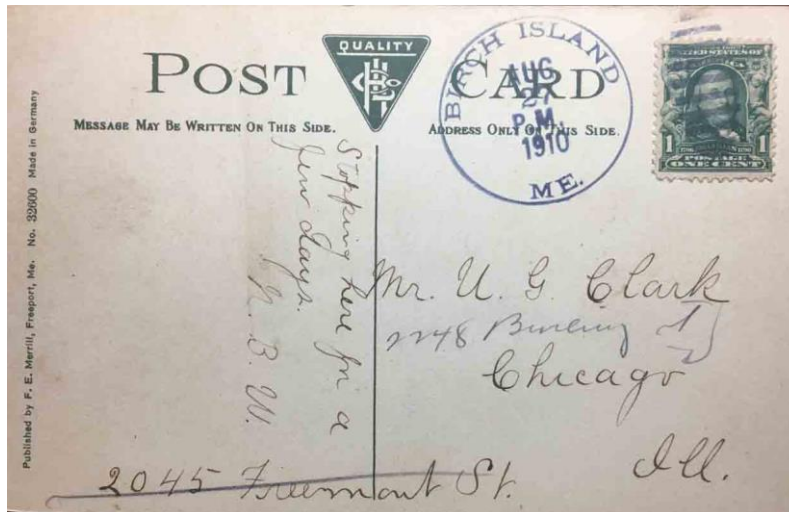
20 June 1902:

Birch Island Post Office opened.

20 June 1902:

Fred C. Johnson became the Postmaster for the Birch Island Post Office.





27 August 1910:

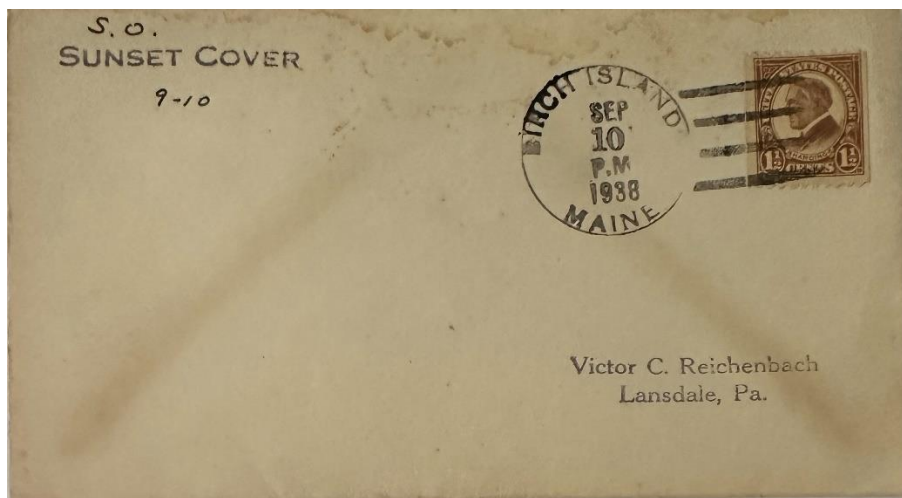
The circular postmark is 33 mm in diameter with a nine-bar oval duplex killer.

27 July 1929:

James P. Reynolds became the Postmaster for the Birch Island Post Office.

25 June 1935:

Charles W. Johnson became the Postmaster for the Birch Island Post Office.



10 September 1938:

The circular postmark is 32 mm in diameter with a four-bar (C/1) killer.

25 June 1943:

Mrs. Ruth Wentworth Conrad became the Postmaster for the Birch Island Post Office.

23 May 1949:

Mrs. Ruth W. Cadieux became the Postmaster for the Birch Island Post Office.



25 June 1955:

The circular postmark is 33 mm in diameter with a four-bar (F/1) killer.

30 June 1964:

Birch Island Post Office closed and became Birch Island RS/RB/CPO Brunswick (summer rural station).

### **Birch Island RS/RB/CPO Brunswick**

30 June 1964:

Birch Island RS/RB/CPO Post Brunswick Post Office (formerly Birch Island Post Office) opened (summer rural branch).

1991:

Birch Island RS/RB/CPO Brunswick Post Office closed.

### **Cundy's Harbor**

20 January 1874:

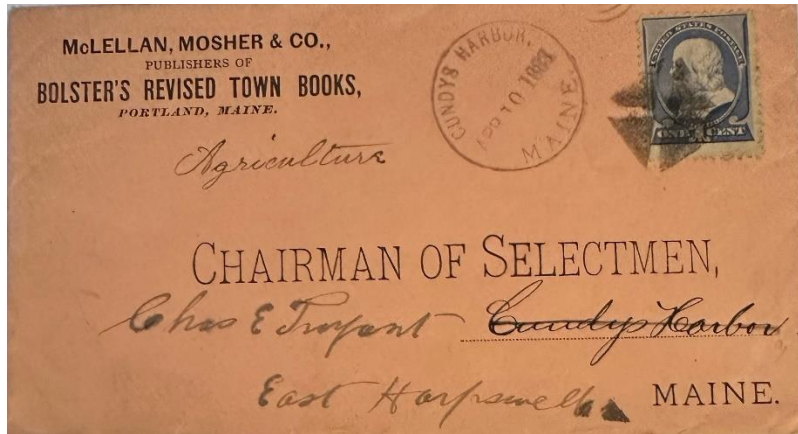
Cundy's Harbor Post Office opened.

20 January 1874:

Daniel W. Simpson became the Postmaster for the Cundy's Harbor Post Office.

22 November 1875:

Sidney Watson became the Postmaster for the Cundy's Harbor Post Office.



10 April 1888:

The circular postmark is 29.5 mm in diameter with a fancy Iron Cross killer.

1894:

The Cundy's Harbor Post Office closed and was renamed Cundys Harbor Post Office.

## **Cundys Harbor**

1894:

Cundy Harbor Post Office (formerly Cundy's Harbor Post Office) opened.

22 November 1875:

Sidney Watson became the Postmaster for the Cundy's Harbor Post Office and remained the Postmaster when Cundy's Harbor Post Office was renamed Cundys Harbor Post Office in 1894.

30 October 1896:

Sarah Watson became the Postmaster of the Cundy Harbor Post Office.

19 September 1905:

Abner J. Harris became the Postmaster of the Cundy Harbor Post Office.

13 August 1915:

Abner J. Harris became the Postmaster of the Cundy Harbor Post Office.

13 August 1915:

Robert S. Watson became the Postmaster of the Cundy Harbor Post Office.

31 December 1918:

Cundy Harbor Post Office closed with service from Brunswick.

15 April 1919:

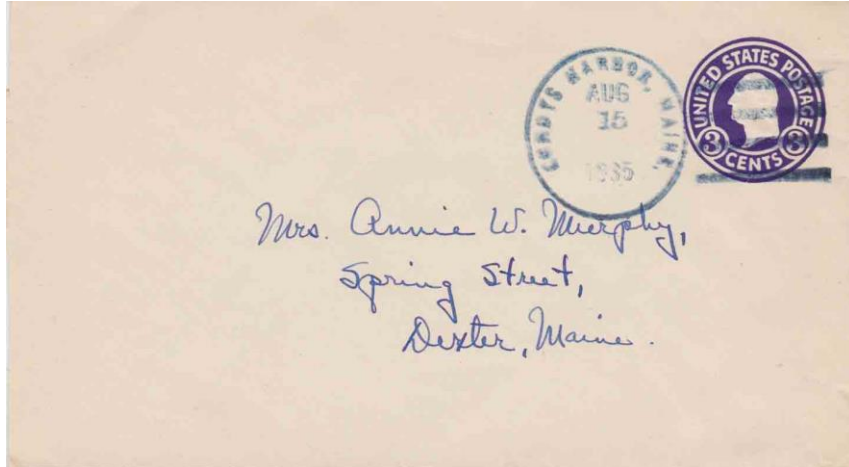
Cundy Harbor Post Office reopened.

15 April 1919:

Susie M. Bartlett became the Postmaster of the Cundy Harbor Post Office.

19 January 1925:

Alice F. Holbrook became the Postmaster of the Cundy Harbor Post Office.



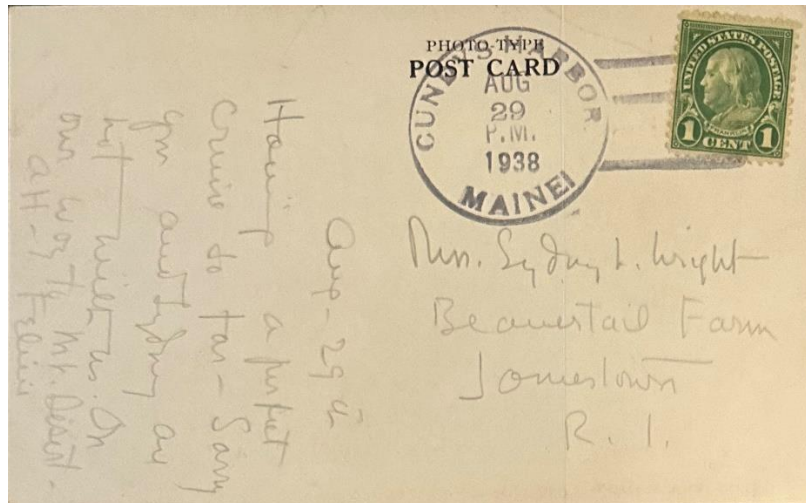
15 August 1935:

The circular postmark is 31 mm in diameter with a four-bar (E) killer. A similar postmark and killer dated 15 July 1935 is known.



23 February 1937:

The circular postmark is 32 mm in diameter with a four-bar and probabla (C/2) killer.



29 August 1938:

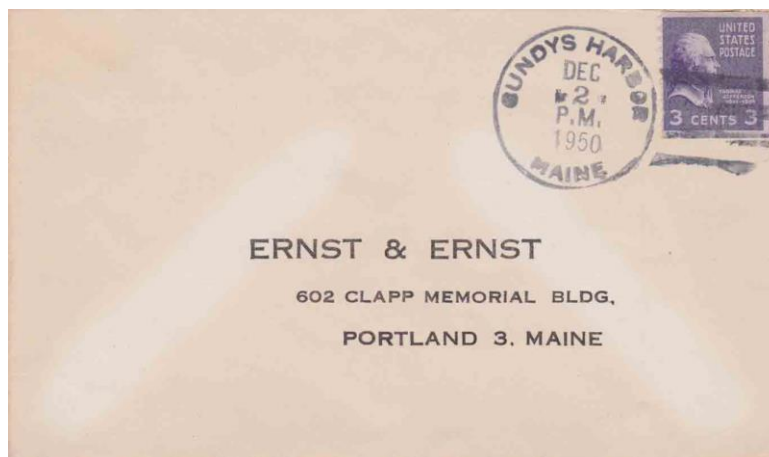
The circular postmark is 34 mm in diameter with a four-bar (C/2) killer.

25 August 1937:

Edward W. Holbrook became the Acting Postmaster of the Cundy Harbor Post Office.

23 June 1938:

Edward W. Holbrook became the Postmaster of the Cundy Harbor Post Office.



2 December 1950:

The circular postmark is 32 mm in diameter with a four-bar (F1) killer.

31 August 1952:

Christine G. Miller became the Acting Postmaster of the Cundy Harbor Post Office.

11 March 1953:

Christine G. Miller became the Postmaster of the Cundy Harbor Post Office.

13 October 1958 discontinued, effective 31 October 1958:

Cundys Harbor Post Office closed with service from Brunswick.

## **Cundys Harbor RS/RB/CPO Brunswick**

18 June 1959:

Cundys Harbor RS/RB/CPO Brunswick Post Office opened.

July 1996:

Cundys Harbor RS/RB/CPO Brunswick Post Office closed.

## **East Harpswell**

19 May 1868:

East Harpswell Post Office opened.

19 May 1868:

William H. Doughty became the Postmaster of the East Harpswell Post Office.

22 September 1896:

Harriett B. Springer became the Postmaster of the East Harpswell Post Office.

15 April 1899:

East Harpswell Post Office closed.

**Harpswell (1)** (Note: There were two post offices in Maine named Harpswell at different times and locations. The (1) is just a notation. It does not appear in the postmarks and is only used by postal historians and collectors to differentiate between the different post offices.)

20 May 1842:

Harpswell (1) Post Office opened.

20 May 1842:

Washington Garcelon became the Postmaster of the Harpswell (1) Post Office.

13 October 1842:

Harpswell (1) Post Office closed and was renamed Mericoneag Post Office.

**Harpswell (2)** (Note: There were two post offices in Maine named Harpswell at different times and locations. The (2) is just a notation. It does not appear in the postmarks and is only used by postal historians and collectors to differentiate between the different post offices.)

12 December 1995 (4 March 1996 per local reports):

Harpswell (2) Post Office opened.

10 March 1990:

Karlotta N. Whidden became the Postmaster of the South Harpswell Post Office and remained the Postmaster when the South Harpswell Post Office name was changed to Harpswell (2) Post Office on 12 December 1995.

3 March 1997:

Sandra James became the Officer-In-Charge of the Harpswell (2) Post Office.

7 June 1997:

Kathy E. Arey became the Postmaster of the Harpswell (2) Post Office.

2 September 1998:

Barry Sloat became the Officer-In-Charge of the Harpswell (2) Post Office.

22 May 1999:

Michael A. Santangelo became the Postmaster of the Harpswell (2) Post Office.

28 March 2003:

Linda C. Pinkham became the Officer-In-Charge of the Harpswell (2) Post Office.

20 March 2004:

Linda C. (Pinkham) Smith became the Postmaster of the Harpswell (2) Post Office.  
Linda C. Pinkham's surname changed to Smith on 14 May 2005

10 October 2007:

Barry H. Sloat became the Officer-In-Charge of the Harpswell (2) Post Office.

2 August 2008:

Charlotte Bishop became the Postmaster of the Harpswell (2) Post Office.

27 May 2021:

Della M. Pesce became the Officer-In-Charge of the Harpswell (2) Post Office.

12 February 2022:

Della M. Pesce became the Postmaster of the Harpswell (2) Post Office.

Unknown date:

Unknown person became the Officer-In-Charge of the Harpswell (2) Post Office.

2 December 2023:

Anthony M. Allen became the Postmaster of the Harpswell (2) Post Office.



June 2021

Harpswell (2) Post Office – Photo Credit Jame Husson

5 March 2024:

The Harpswell (2) Post Office is still operational at 1212 Harpswell Neck Rd. Harpswell, ME 04079. GPS 43° 46' 54" N 69° 59' 57" W.

## **Harpswell Centre**

25 February 1864:

Harpswell Centre Post Office opened.

25 February 1864:

Lemuel H. Stover became the Postmaster of the Harpswell Centre Post Office.

28 November 1871:

Mrs. Emeline P. Morse became the Postmaster of the Harpswell Centre Post Office.

10 November 1880:

Elisha A. Clark became the Postmaster of the Harpswell Centre Post Office.

8 April 1896

John A. Curtis became the Postmaster of the Harpswell Centre Post Office.

1896:

Harpswell Centre Post Office closed, and its name was changed to Harpswell Center.



## Harpswell Center

1896:

The Harpswell Center Post Office (formerly Harpswell Centre Post Office) opened.

8 April 1896

John A. Curtis became the Postmaster of the Harpswell Centre Post Office.



HARPSWELL CENTER, MAINE. The post office, town house, and village church where Elijah Kellogg preached for many years. M-748

Circa 1898:

Harpswell Center Post Office.

15 April 1899:

Harpswell Center Post Office closed with service from Brunswick.

## Mericoneag

13 October 1842:

Mericoneag Post Office (formerly Harpswell (1) Post Office) opened.

20 May 1842:

Washington Garcelon became the Postmaster of the Harpswell (1) Post Office and remained the Postmaster when Harpswell (1) Post Office changed its name to Mericoneag Post Office on 13 October 1842.

21 July 1845:

William Randall became the Postmaster of the Mericoneag Post Office.

29 July 1846:  
Mericoneag Post Office closed.

## **North Harpswell**

25 February 1864:  
North Harpswell Post Office opened.

25 February 1864:  
Charles Johnson became the Postmaster of the North Harpswell Post Office.

7 March 1881:  
Isaac Merriman, Jr. became the Postmaster of the North Harpswell Post Office.

22 September 1897:  
Peter C. Merriman became the Postmaster of the North Harpswell Post Office.

15 April 1899:  
North Harpswell Post Office closed with service from Brunswick.

## **Orr's Island**

13 May 1868:  
Orr's Island Post Office opened.

13 May 1868:  
Samuel E. Smuller became the Postmaster of Orr's Island Post Office.

20 December 1883:  
Sylvanus C. Prince became the Postmaster of Orr's Island Post Office.

3 May 1888:  
Richard Orr became the Postmaster of Orr's Island Post Office.

1894:  
Orr's Island Post Office closed and was renamed Orrs Island Post Office.

## Orrs Island

3 May 1888:

Richard Orr became the Postmaster of Orr's Island Post Office and remained the Postmaster when Orr's Island Post Office's name was changed to Orrs Island Post Office in 1894.

1894:

Orrs Island Post Office (formerly Orr's Island) opened.

3 May 1888:

Richard Orr became the Postmaster of Orr's Island Post Office and remained the Postmaster when Orr's Island Post Office's name was changed to Orrs Island Post Office in 1894.

16 June 1897:

John E. Osborne became the Postmaster of the Orrs Island Post Office.

28 December 1898:

Josie M. Linscott became the Postmaster of the Orrs Island Post Office.

20 October 1900:

Josie M. Tetley became the Postmaster of the Orrs Island Post Office.

15 May 1901:

Minnie E. Linscott became the Postmaster of the Orrs Island Post Office.

8 September 1908:

Henry Allen became the Postmaster of the Orrs Island Post Office.

31 May 1918:

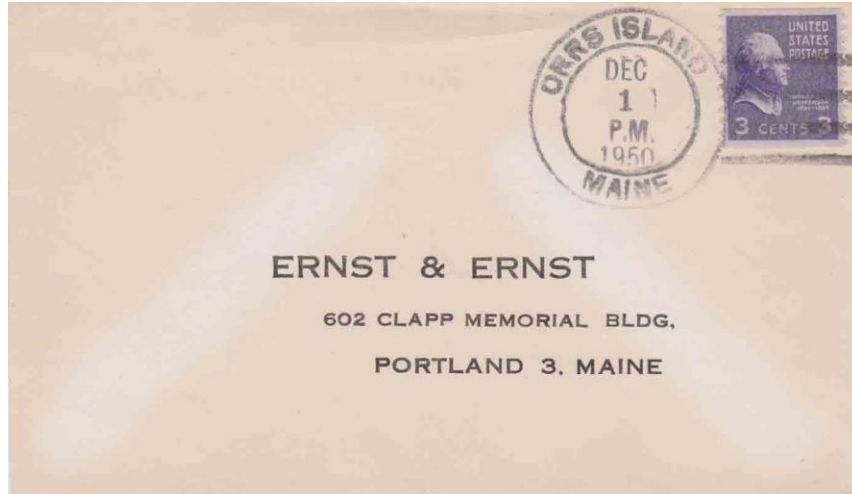
Charles F. Huff became the Postmaster of the Orrs Island Post Office.

1 January 1921:

Orrs Island Post Office became a Presidential Post Office until 30 June 1934.

1 July 1945:

Orrs Island Post Office became a Presidential Post Office again.



1 December 1950:

The outer circle of this double-ringed circular postmark is 34.5 mm in diameter with a (F/1) killer. A similar postmark and killer dated 190? Is known.

31 December 1951:

Nellie A. Sylvester became the Acting Postmaster of the Orrs Island Post Office.

5 April 1957:

Augustus Sylvester became the Postmaster of the Orrs Island Post Office.

29 December 1972:

Mrs. Nelly A. Sylvester became the Officer-In-Charge of the Orrs Island Post Office.

28 April 1973:

Mrs. Nelly A. Sylvester became the Postmaster of the Orrs Island Post Office.

28 August 1982:

Warren R. Cutter became the Officer-In-Charge of the Orrs Island Post Office.

25 December 1982:

Dorothy D. Black became the Postmaster of the Orrs Island Post Office.

28 February 1984:

Robert B. Gilbert became the Officer-In-Charge of the Orrs Island Post Office.

19 June 1984:

Jeannine A. Brann became the Officer-In-Charge of the Orrs Island Post Office.

7 July 1984:

John W. Small became the Postmaster of the Orrs Island Post Office.

1 June 1989:

Charles F. Cornwell became the Officer-In-Charge of the Orrs Island Post Office.

12 August 1989:

Doris D. Clark became the Postmaster of the Orrs Island Post Office.

28 November 1990:

Alfred Romano became the Officer-In-Charge of the Orrs Island Post Office.

4 March 1991:

Lauren Sweetman became the Officer-In-Charge of the Orrs Island Post Office.

19 April 1991:

Donald Morin became the Officer-In-Charge of the Orrs Island Post Office.

10 August 1991:

Patricia Clark became the Officer-In-Charge of the Orrs Island Post Office.

30 November 1991:

Charles W. Ross became the Officer-In-Charge of the Orrs Island Post Office.

8 February 1992:

James Fred Hale became the Postmaster of the Orrs Island Post Office.

29 December 1999:

Sally Roane became the Officer-In-Charge of the Orrs Island Post Office.

15 March 2001:

Kim Libby became the Officer-In-Charge of the Orrs Island Post Office.

23 August 2004:

Sherri L. Thompson became the Officer-In-Charge of the Orrs Island Post Office.

11 April 2005:

Paula A. Farmer became the Officer-In-Charge of the Orrs Island Post Office.

27 October 2005:

William Devine Jr. became the Officer-In-Charge of the Orrs Island Post Office.

9 January 2006:

Cheryl M. Mulligan became the Officer-In-Charge of the Orrs Island Post Office.

8 January 2008:

William Devine Jr. became the Officer-In-Charge of the Orrs Island Post Office.

29 May 2009:

Kim Kwok became the Officer-In-Charge of the Orrs Island Post Office.

9 April 2010:

Jae Hyun Kim became the Officer-In-Charge of the Orrs Island Post Office.

6 April 2013:

Orrs Island Post Office was converted to a Level 6 (6 Hour) Remotely Managed Post Office under the direction of the Postmaster of the Harpswell Post Office.



June 2021:

Orrs Island Post Office – Photo Credit Jame Husson

5 March 2024:

Orrs Island Post Office is still operational and located at 1729 Harpswell Islands Rd., Orrs Island, ME 04066, GPS 43° 45' 35" N 69° 58' 41" W

## South Harpswell

20 June 1866:

South Harpswell Post Office opened:

20 June 1866:

Elisha S. Bibber became the Postmaster of the South Harpswell Post Office.

11 December 1866:

South Harpswell Post Office closed.

6 June 1878:

South Harpswell Post Office reopened.

6 June 1878:

Erastus C. Simpson became the Postmaster of the South Harpswell Post Office.



5 July 1880:

The circular postmark is 26 mm in diameter with a three-circle target killer.

2 July 1886:

William P. Bailey became the Postmaster of the South Harpswell Post Office.

18 February 1889:

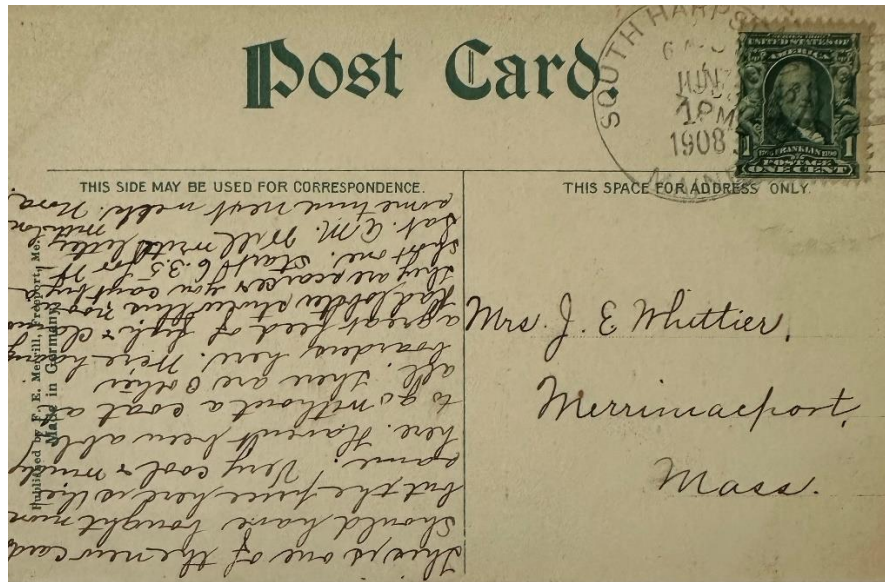
Ida J. Bailey became the Postmaster of the South Harpswell Post Office.

6 May 1893:

Elbridge G. Pinkham, Jr. became the Postmaster of the South Harpswell Post Office.

21 August 1903

Frank L. Pinkham became the Postmaster of the South Harpswell Post Office.

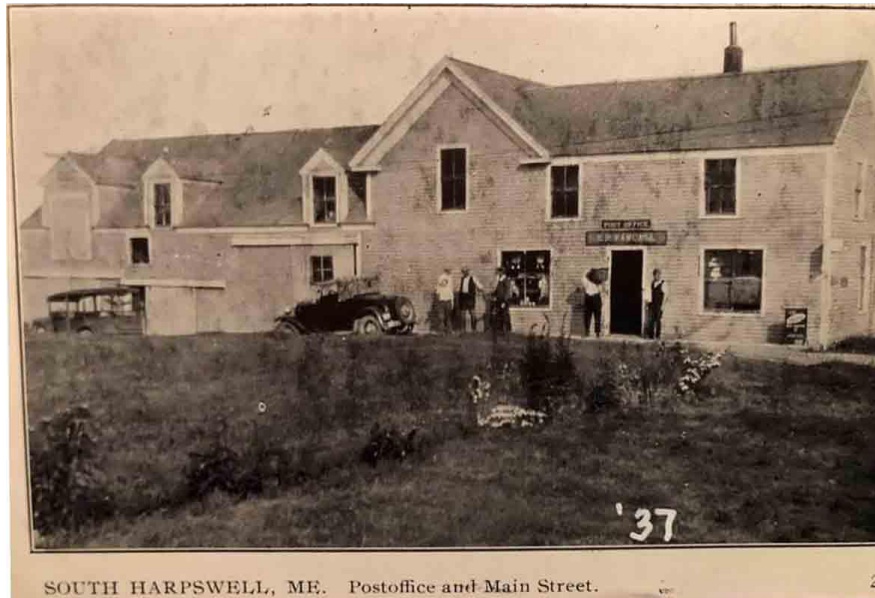


1 June 1908:

The circular postmark is 31.5 mm in diameter with a four-bar (A/1) killer.

3 June 1915:

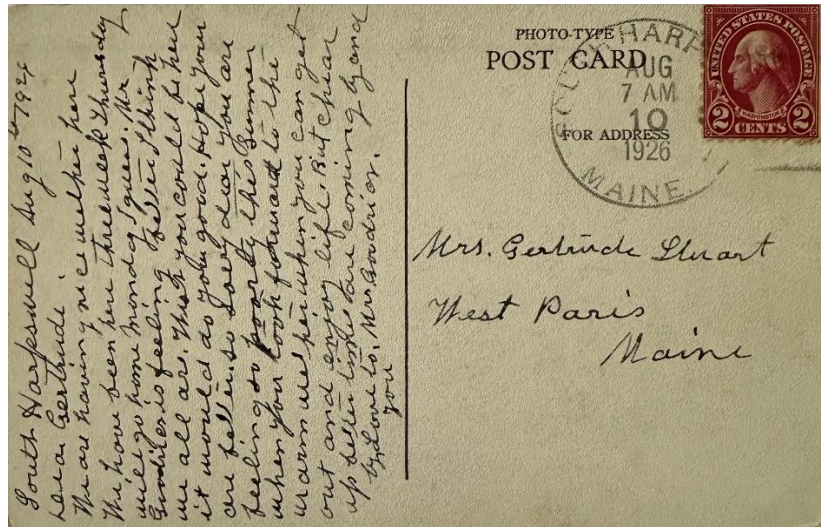
Mabel Pinkham became the Postmaster of the South Harpswell Post Office.



Circa 1930:

South Harpswell Post Office.





10 August 1926:

The circular postmark is 31.5 mm in diameter with a four-bar killer.

13 October 1926:

Edwin R. Randall became the Postmaster of the South Harpswell Post Office.

31 May 1948:

Mrs. Ava M. Percy became the Postmaster of the South Harpswell Post Office.

16 July 1949:

Mrs. Annie L. Douglass became the Postmaster of the South Harpswell Post Office.

21 December 1957:

Mrs. Margaret M. Given became the Acting Postmaster of the South Harpswell Post Office.

30 June 1959:

Mrs. Margaret M. Given became the Postmaster of the South Harpswell Post Office.

30 March 1962:

David H. Heckett became the Acting Postmaster of the South Harpswell Post Office.

19 June 1963:

David H. Heckett became the Postmaster of the South Harpswell Post Office.

15 January 1981:

Raymond E. Caron became the Officer-In-Charge of the South Harpswell Post Office.

2 May 1981:

Kenneth L. Kirkpatrick became the Postmaster of the South Harpswell Post Office.

29 December 1989:

Jonathan S. Fillmore became the Officer-In-Charge of the South Harpswell Post Office.

10 March 1990:

Karlotta N. Whidden became the Postmaster of the South Harpswell Post Office.

12 December 1995: (4 March 1996 per local reports)

South Harpswell Post Office closed, and the name changed to Harpswell (2) Post Office.

## **West Harpswell**

14 October 1847:

West Harpswell post office opened.

14 October 1847:

Washington Garcelon became the Postmaster of the West Harpswell Post Office.

14 July 1849:

Ebenezer Pinkham became the Postmaster of the West Harpswell Post Office.

10 April 1850:

Alcot S. Merriman became the Postmaster of the West Harpswell Post Office.

27 May 1854:

West Harpswell Post Office closed.

11 September 1862:

West Harpswell Post Office reopened.

11 September 1862:

David Webber became the Postmaster of the West Harpswell Post Office.

22 December 1865:

Miss Hellen M. Webber became the Postmaster of the West Harpswell Post Office.

15 June 1868:

Miss Lydia P. Webber became the Postmaster of the West Harpswell Post Office.



29 November circa 1870:

The circular postmark is 27 mm in diameter with a four-circle target killer.

28 February 1871:

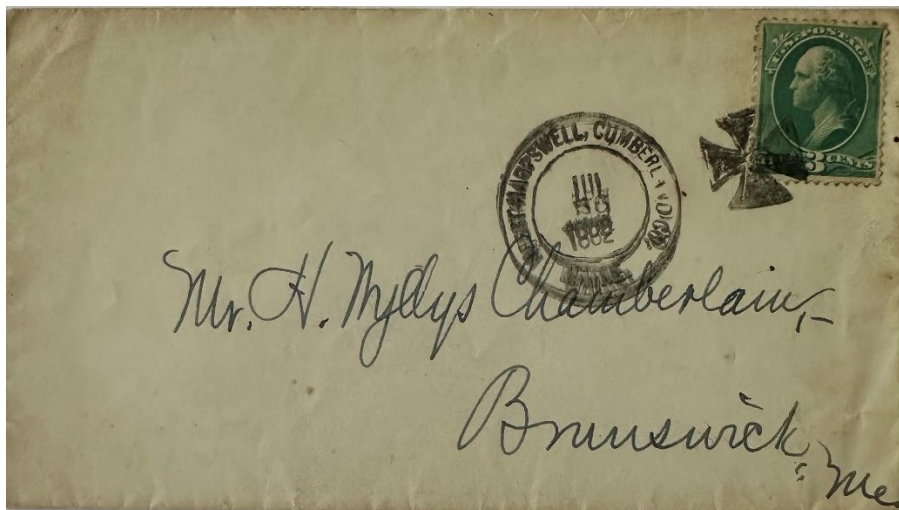
Miss Margaret M. Thomas became the Postmaster of the West Harpswell Post Office.

15 January 1872:

Miss Eleanora Thomas became the Postmaster of the West Harpswell Post Office.

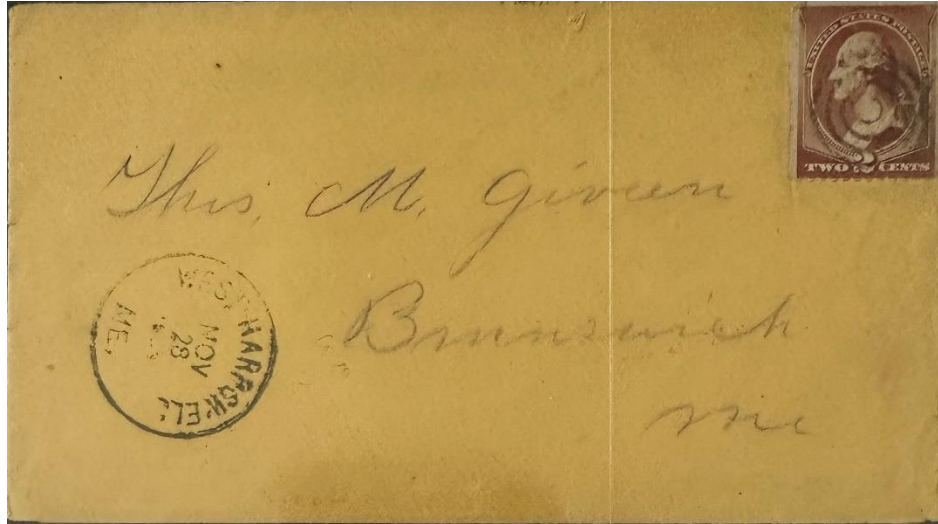
21 March 1877:

Mrs. Eleanora Webber became the Postmaster of the West Harpswell Post Office.



30 July 1882:

The outer ring of this double-ring circular postmark is 31.5 mm with a fancy Maltese Cross killer. Note: Town and County postmark.



28 November 1884:

The circular postmark is 28 mm in diameter with a four-circle target killer. A similar postmark dated August 1884 with no killer is known.

15 April 1899:

West Harpswell Post Office closed with service from Brunswick.

---

Credits:

This document is based on the original web page compiled by the V. F. Thomas Co. (2021), with revisions and additions by James Husson and Brian Damien (2024).

Thank you for the contributions to this page by the Strout Family and James Husson.

Thank you to the Waterville Stamp Club (<https://thewatervillestampclub.com>) for helping ensure this project's continuity.

Sources:

The Post Offices of Maine 2022, Maine Philatelic Society:

<http://www.mainephilatelic.org/books/TPOOM>

Maine Philatelic Society Postal History Gateway

<http://www.mainephilatelic.org/mph>

National Archives Catalog, Postmaster Appointments for Cumberland County, Maine:

<https://catalog.archives.gov/id/78746483>

<http://www.mainephilatelic.org/mph>

Postmaster Finder by City:

<https://about.usps.com/who/profile/history/postmaster-finder/postmasters-by-city.htm>

Additional material, including links to official records of postmaster appointments, can be found at Sources for Researching Maine Post Offices, Postmasters, and Postal History:

<http://www.mainephilatelic.org/books/post-office-sources.pdf>.

Brunswick and Harpswell [map] from the Atlas of Cumberland County, Maine 1871

[https://digitalmaine.com/atlas\\_cumberland\\_1871/47/](https://digitalmaine.com/atlas_cumberland_1871/47/)

“Harpswell, Maine” article in Wikipedia [https://en.wikipedia.org/wiki/Harpswell,\\_Maine](https://en.wikipedia.org/wiki/Harpswell,_Maine)

“Harpswell,” article in Maine: An Encyclopedia <https://maineanencyclopedia.com/harpswell/>

Counties, Cities, Towns and Plantations of Maine: A Handbook of Incorporations, Dissolutions and Boundary Changes. Maine State Archives, 1980.

[https://digitalmaine.com/arc\\_publications/11/](https://digitalmaine.com/arc_publications/11/)