

Livermore Postal History

Androscoggin County, Maine

Last update for this page: 8 March 2023

This page is part of the Maine Postal History website—a project of the Waterville Stamp Club. For more information, see <https://www.thewatervillestampclub.com/mph>.

The Town of Livermore was incorporated on 28 February 1795. Over the years between 1795 and 1854, portions of the town were in five different counties. Since the first post office opened in Livermore in 1807, three different counties have been involved. An additional complication is that the town was split between two counties (Oxford on the west and Kennebec on the east) in the early years and up until 1 March 1844, when the town was divided into two towns: Livermore, in Oxford County, and East Livermore, in Kennebec County.

On 31 March 1854, both towns became part of the newly created Androscoggin County. The Town of East Livermore was renamed Livermore Falls in 1930. [See the Livermore Falls Postal History page for more information on the post offices located in that town.](#)

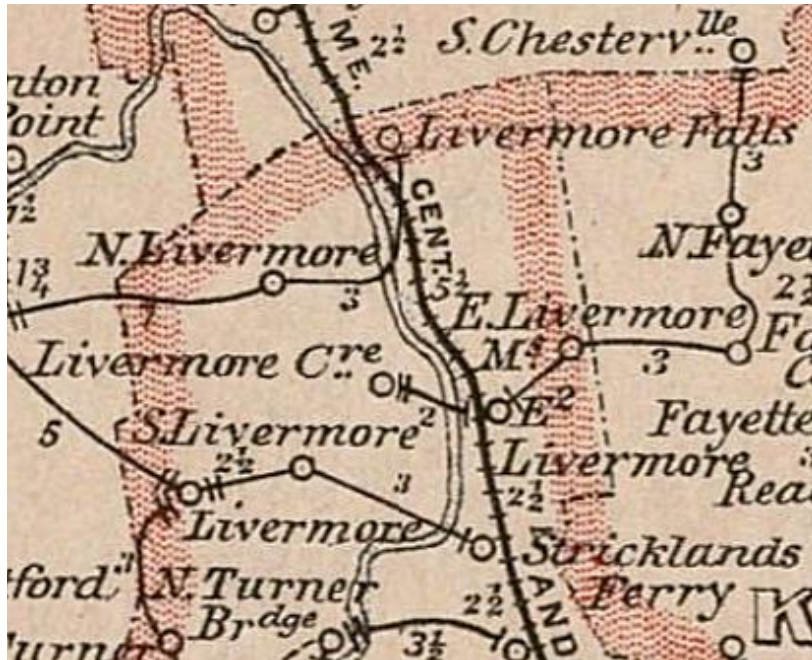
Researchers seeking primary source records for the offices of Livermore should be aware that records for the times before 31 March 1854 will be found under Kennebec and Oxford Counties – and some records that might be expected to appear under Kennebec may be found in Oxford.

During the history of the town of Livermore, there have been six post offices. Briefly, the history of these six is as follows:

1. **East Livermore** post office was established on 8 October 1822 in Kennebec County. The area of the Town of Livermore that had this office separated to become the Town of East Livermore on 1 March 1844, and then East Livermore became part of Androscoggin County on 31 March 1854. As of 1930, the town was renamed Livermore Falls, but this post office still operates as East Livermore.
2. The former **Brown's Mills** post office (now part of Livermore Falls), which never opened, was renamed on 19 January 1872 as **East Livermore Mills** post office, which operated as such until closing on 15 February 1912.
3. **Livermore** post office was established on 1 April 1807 in Oxford County. It changed to Androscoggin County on 31 March 1854 and is still operating.
4. **Livermore Centre** post office opened on 21 June 1839 in Oxford County. It was changed to Androscoggin County on 31 March 1854. The name changed to **Livermore Center** in 1893 and the office closed on 15 February 1911.

5. **North Livermore** post office was established on 5 May 1824 in Oxford County. It changed to Androscoggin County on 31 March 1854 and was renamed on 31 December 1960 as North Livermore Rural Sta. Livermore Falls, which closed on 31 December 1964.

6. **South Livermore** post office opened on 19 August 1856, closed on 7 May 1858, reopened on 24 May 1858, and closed on 30 June 1911.



In 1891, the Town of Livermore had four post offices: Livermore, Livermore Centre, North Livermore, and South Livermore.

The Town of Livermore Falls also had four: East Livermore, East Livermore Mills, Livermore Falls, and Stricklands Ferry.

Extract from the 1891 Post Route Map of Maine. Map reproduction courtesy of Norman B. Leventhal Map & Education Center at the Boston Public Library.

<https://collections.leventhalmap.org/search/commonwealth:cj82kj790>

Postmarks from the town of Livermore include:

[Brown's Mills](#)

[East Livermore](#)

[East Livermore Mills](#)

[Livermore](#)

[Livermore Centre](#)

[Livermore Center](#)

[North Livermore](#)

[North Livermore Falls Rural Sta.](#)

[South Livermore](#)

Brown's Mills

5 January 1872:

Brown's Mills Post Office was created but never opened.

5 January 1872:

Eli N. Berry became Postmaster for Brown's Mills.

19 January 1872:

Brown's Mills Post Office, which never opened, is changed to East Livermore Mills Post Office.

East Livermore

1822 October 8:

East Livermore Post Office opened as part of Oxford County.

1822 October 8:

Francis F. Haines became Postmaster for East Livermore Post Office.

9 February 1839:

William B. Small became Postmaster for East Livermore Post Office.

30 June 1841:

Francis F. Haines became Postmaster for East Livermore Post Office.

2 April 1844:

East Livermore became part of Kennebec County.

20 March 1846:

William B. Small became Postmaster for East Livermore Post Office.

15 August 1851:

Francis F. Haines became Postmaster for East Livermore Post Office.

2 March 1852:

William B. Small became Postmaster for East Livermore Post Office.

11 January 1854:

Francis Merrill became Postmaster for East Livermore Post Office.

31 March 1854:

East Livermore became part of Androscoggin County.

7 July 1854:

Jonathan Lovejoy became Postmaster for East Livermore Post Office.

29 June 1863:

Elisha B. Lovejoy became Postmaster for East Livermore Post Office.

24 April 1865:

Jonathan Lovejoy became Postmaster for East Livermore Post Office.



9 November 1862:

The circular postmark is 25 cm CDS in diameter with a target killer.

24 December 1867:

Amos Hobbs became Postmaster for East Livermore Post Office.

24 September 1868:

Francis J. Folsom became Postmaster for East Livermore Post Office.

29 February 1876:

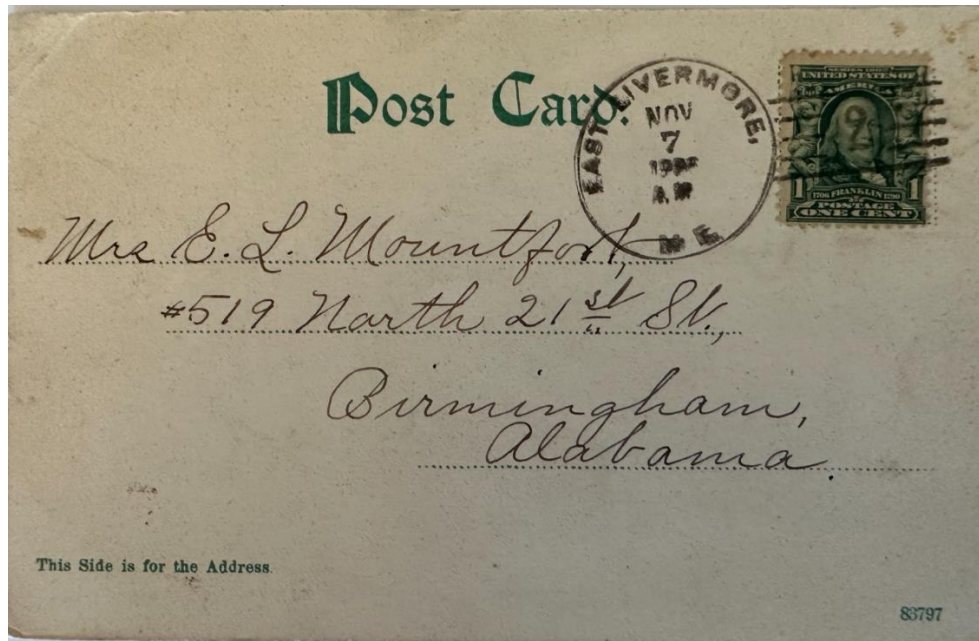
Caleb P. Brown became Postmaster for East Livermore Post Office.

12 August 1878:

Francis J. Folsom became Postmaster for East Livermore Post Office.

5 January 1886:

Ellen M. Folsom became Postmaster for East Livermore Post Office.



7 November 1906:

The circular postmark is 28 cm CDS in diameter (slightly misshaped) with a Doane 3/2 killer.

30 August 1909:

Alphonso D. Cole became Postmaster for East Livermore Post Office.

18 October 1928:

William D. Stephens became Postmaster for East Livermore Post Office.

15 March 1929:

East Livermore is now part of Livermore Falls.

31 August 1948:

Mrs. Ruth Evelyn Guild became Acting Postmaster for East Livermore Post Office.

25 April 1949:

Mrs. Ruth Evelyn Guild became Postmaster for East Livermore Post Office.

31 March 1967:

Mrs. Louise D. Fuller became Acting Postmaster for East Livermore Post Office.

5 March 1968:

Mrs. Louise D. Fuller became Postmaster for East Livermore Post Office.

12 July 1974:

Barbara G. Lyman became Officer-In-Charge for East Livermore Post Office.

1 February 1975:

Barbara G. Lyman became Postmaster for East Livermore Post Office.

21 April 1978:

Lucy Page became Officer-In-Charge for East Livermore Post Office.

9 September 1980:

Vincent W. Cormier became Postmaster for East Livermore Post Office.

Unknown date:

Patricia A. Cormier became Officer-In-Charge for East Livermore Post Office.

7 January 1984:

Patricia B. (Meservey) Albert became Postmaster for East Livermore Post Office.

11 February 1988:

Edward A. Baxter became Officer-In-Charge for East Livermore Post Office.

23 April 1988:

Diane M. Webber became Postmaster for East Livermore Post Office.

25 January 1993:

Lois M. Heikkinen became Officer-In-Charge for East Livermore Post Office.

22 March 1994:

Terrence P. King became Officer-In-Charge for East Livermore Post Office.

20 August 1994:

Terrence P. King became Postmaster for East Livermore Post Office.

29 June 2010:

Karen S. Verrill became Officer-In-Charge for East Livermore Post Office.

19 April 2012:

Michelle Grimbilas became Officer-In-Charge for East Livermore Post Office.

22 December 2012:

Karen S. Verrill became Officer-In-Charge for East Livermore Post Office.

25 January 2014:

Cheryl Dyar became Officer-In-Charge for East Livermore Post Office.

23 August 2014:

East Livermore Post Office became a Remotely Managed Post Office under the direction of the Postmaster of the Livermore Falls Post.

2023:

East Livermore Post Office is still operating.

East Livermore Mills

19 January 1872:

East Livermore Mills Post Office opened.

19 January 1872:

Eli N. Berry became Postmaster for East Livermore Mills Post Office.

3 February 1887:

William A. Francis became Postmaster for East Livermore Mills Post Office.

20 April 1889:

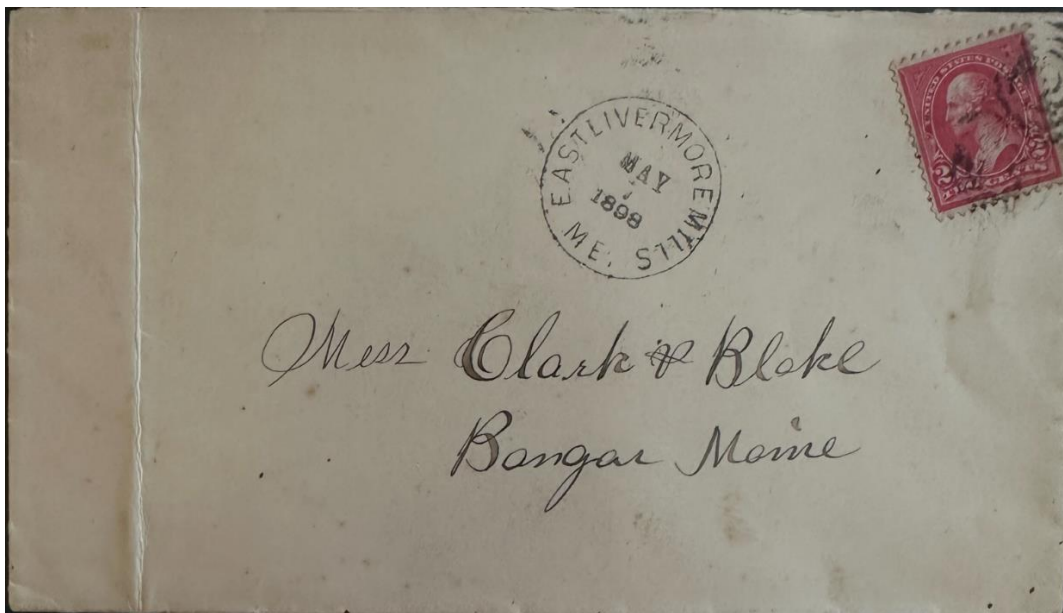
Eli N. Berry became Postmaster for East Livermore Mills Post Office.

24 May 1893:

William A. Francis became Postmaster for East Livermore Mills Post Office.

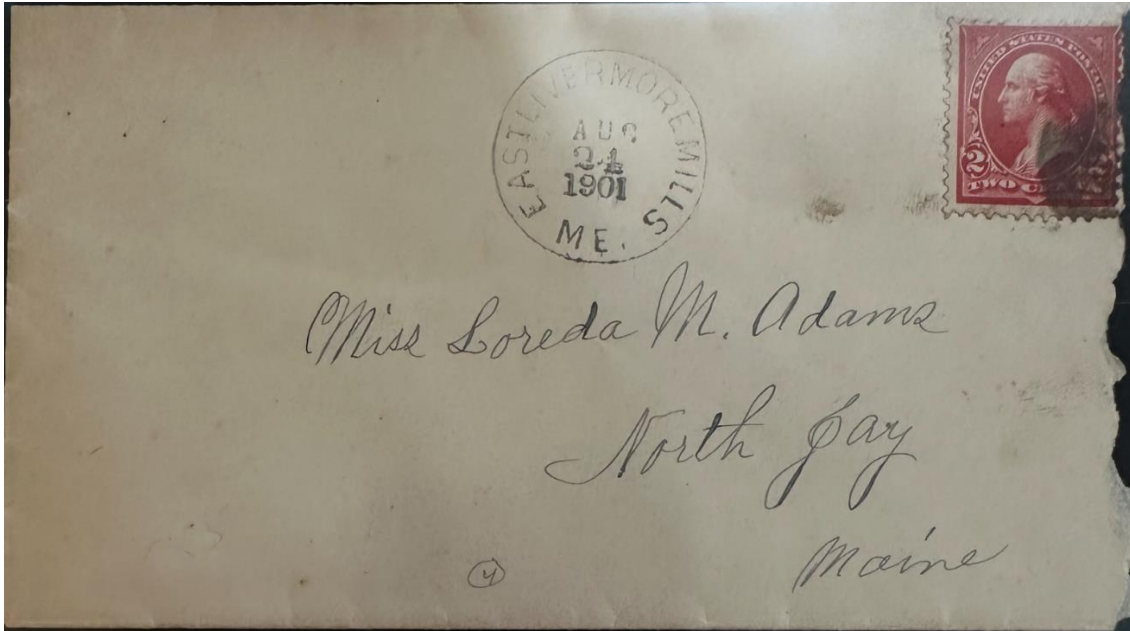
12 May 1897:

Charles H. Keith became Postmaster for East Livermore Mills Post Office.



7 May 1898:

The circular postmark is 27 cm CDS in diameter with a target killer.



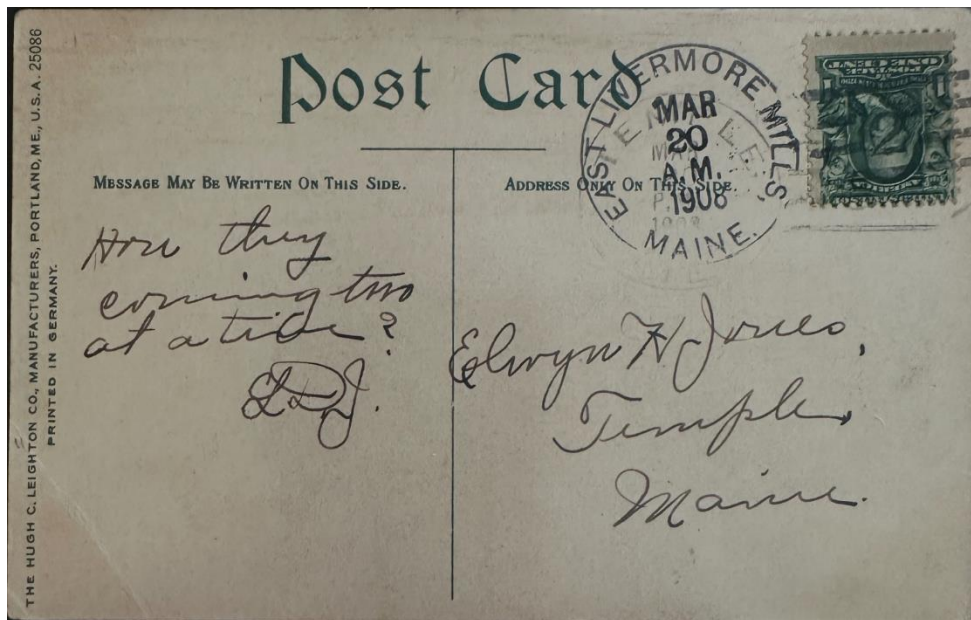
24 August 1901:
The circular postmark is 27 cm CDS in diameter with a cork killer.

3 September 1904:

Isaac H. Webber became Postmaster for East Livermore Mills Post Office.

18 July 1907:

Charles W. Whittier became Postmaster for East Livermore Mills Post Office.



20 March 1908:
The circular postmark is 31 cm CDS in diameter with a Doane 3/2 killer.

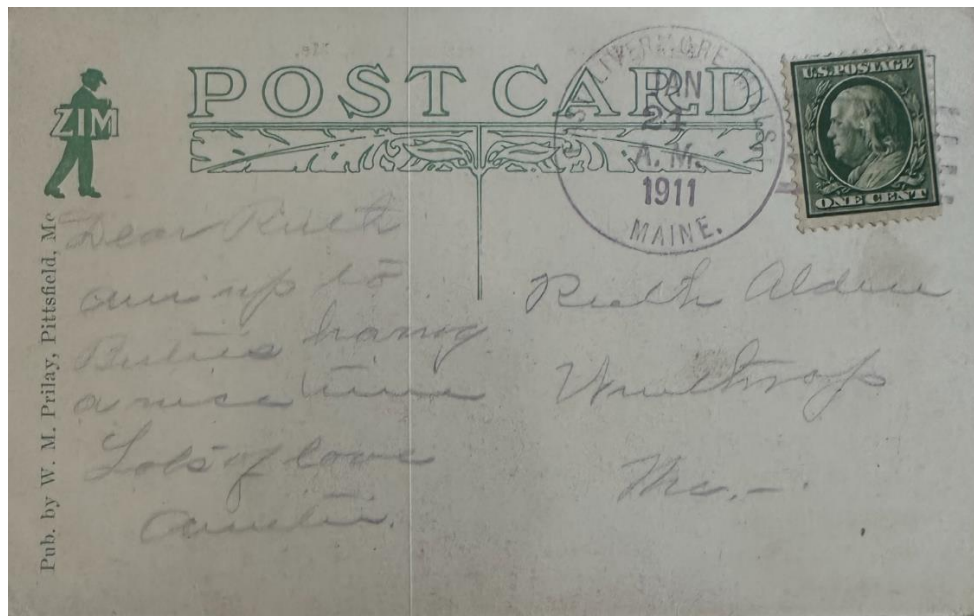


11 January 1909:

The circular postmark is 32 cm CDS in diameter with a four-bar (A) killer.

15 November 1909:

William F. Jernegan became Postmaster for East Livermore Mills Post Office.



21 January 1911:

The circular postmark is 32 cm CDS in diameter four-bar (A) killer.

15 February 1912:

East Livermore Mills Post Office closed.

Livermore

1 April 1807:

Livermore Post Office opened in Oxford County.

1 April 1807:

Benjamin Prescott became Postmaster for Livermore Post Office.

30 September 1809:

Benjamin Bradford became Postmaster for Livermore Post Office.

17 March 1825:

Isaac Strickland became Postmaster for Livermore Post Office.

12 December 1838:

William H. Britton became Postmaster for Livermore Post Office.

11 May 1842:

Doribus Morison became Postmaster for Livermore Post Office.

12 June 1844:

George W.C. Washburn became Postmaster for Livermore Post Office.

3 February 1849:

David Leavitt became Postmaster for Livermore Post Office.

4 June 1852:

Isaac Strickland became Postmaster for Livermore Post Office.

7 January 1853:

William Child became Postmaster for Livermore Post Office

31 March 1854:

County Changed to Androscoggin.

20 September 1856:

Samuel H. Morse became Postmaster for Livermore Post Office.

13 March 1858:

Lee Strickland became Postmaster for Livermore Post Office.

28 August 1867:

Lamont O. Stevens became Postmaster for Livermore Post Office.

26 October 1869:

Oliver P. Stevens became Postmaster for Livermore Post Office.

7 July 1870:

Lamont O. Stevens became Postmaster for Livermore Post Office.

31 July 1871:

George T. Piper became Postmaster for Livermore Post Office.

3 May 1876:

Augustus H. Strickland became Postmaster for Livermore Post Office.

1 October 1878:

George T. Piper became Postmaster for Livermore Post Office.

25 September 1884:

Roscoe G. Gooding became Postmaster for Livermore Post Office.

26 July 1886:

Welcome F. Fuller became Postmaster for Livermore Post Office.

2 February 1892:

Roscoe G. Gooding became Postmaster for Livermore Post Office.

12 July 1894:

Pethuel M. Jones became Postmaster for Livermore Post Office.

20 June 1898:

Welcome E. Fuller became Postmaster for Livermore Post Office.



1902 July:

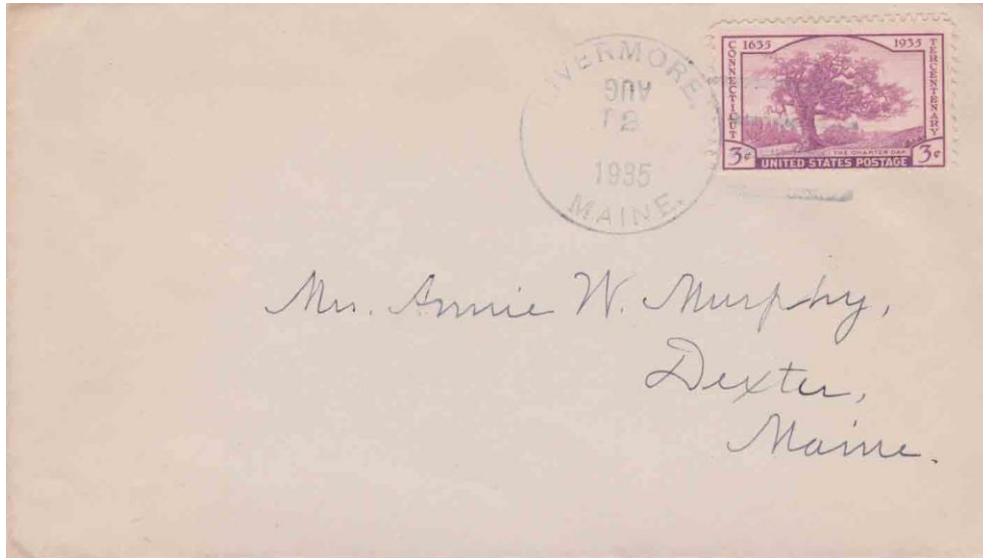
The circular postmark is 27–28 mm in diameter, and CDS is used as the killer.

12 September 1904:

Wallace E. Day became Postmaster for Livermore Post Office.

8 September 1917:

Chessman N. Turner became Postmaster for Livermore Post Office.



1935 August 2:

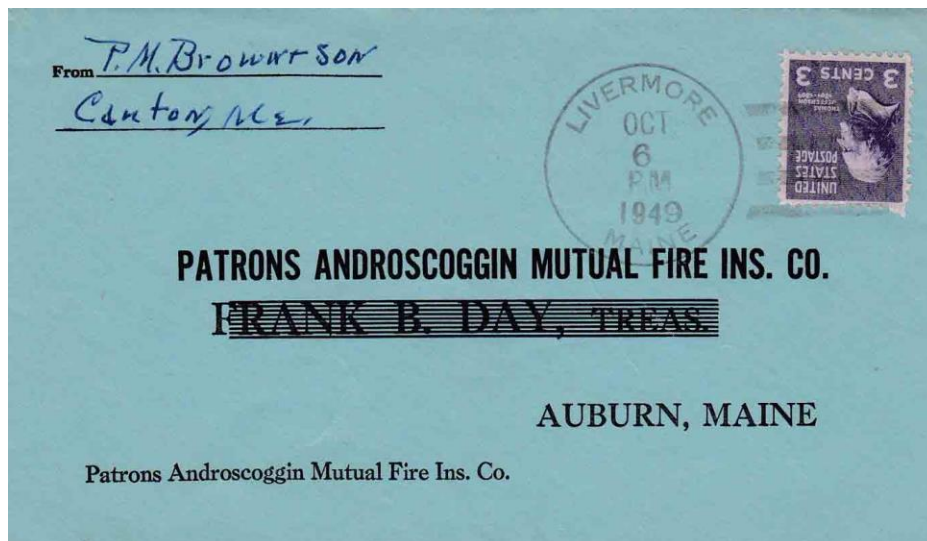
The circular postmark is 32–33 mm in diameter with a four-bar (B) killer.

31 January 1940:

Bernal L. Phillips became Acting Postmaster for Livermore Post Office.

15 August 1940:

Bernal L. Phillips became Postmaster for Livermore Post Office.



1949 October 6:

The circular postmark is approximately 32 mm in diameter with a four-bar killer.

5 July 1974:

Ilean P. Guild became Officer-in-Charge for Livermore Post Office.

31 August 1974:

Ilean P. Guild became Postmaster for Livermore Post Office.

17 September 1983:

Sheila J. Harlow became Officer-in-Charge for Livermore Post Office.

26 November 1983:

Mary E. Young became Postmaster for Livermore Post Office.

31 October 2002:

Mark Remeika became Officer-in-Charge for Livermore Post Office.

31 May 2003:

Gail A. Daigle became Postmaster for Livermore Post Office.

21 May 2004:

Wendy Hanson became Officer-in-Charge for Livermore Post Office.

6 August 2005:

David M. Paine became Postmaster for Livermore Post Office.

18 July 2012:

Nancy E. Smith became Officer-in-Charge for Livermore Post Office.

2013 November 2:

Livermore Post Office was converted to a Remotely Managed Post Office (RMPO) under the direction of the Livermore Falls Postmaster. RMPOs are a special category of a post office. USPS still calls them post offices, not branches, and doesn't list them as anything other than post offices.

Today:

Livermore Post Office is currently in operation.

Livermore Centre

21 June 1839:

Livermore Centre Post Office opens as part of Oxford County. (See Oxford County for additional early Livermore Centre information)

21 June 1839:

John C. Wyman became Postmaster for Livermore Centre Post Office.

30 November 1841:

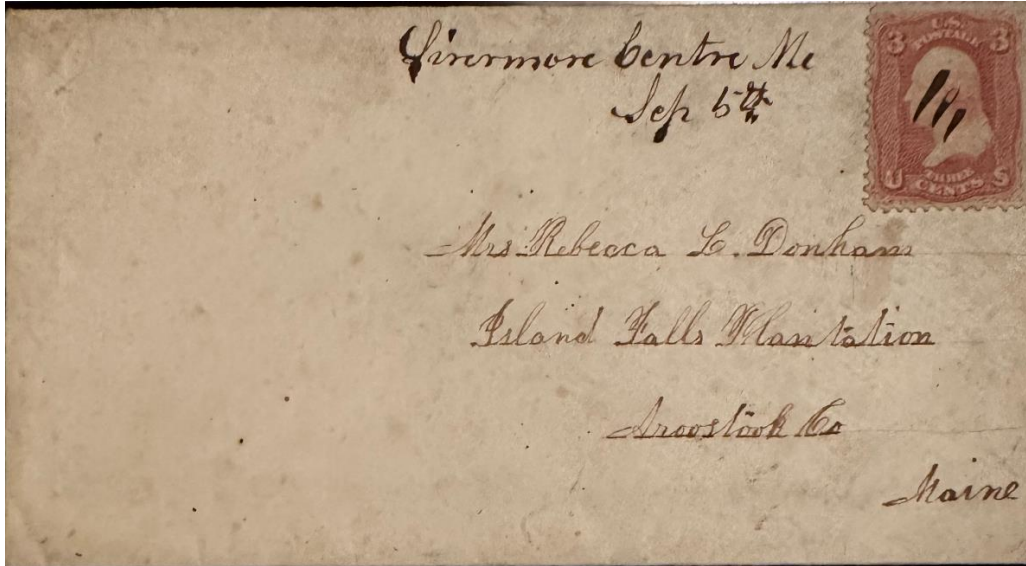
Abner Moore became Postmaster for Livermore Centre Post Office.

31 March 1854:

Livermore Centre Post Office is now part of Androscoggin County.

5 February 1856:

Alvan C. Harlow became Postmaster for Livermore Centre Post Office.



5 September c. 1865
Manuscript Postmark

17 July 1873:

John W. Bigelow became Postmaster for Livermore Centre Post Office.

6 April 1878:

John L. Cummings became Postmaster for Livermore Centre Post Office.

19 July 1882:

Frank B. Bigelow became Postmaster for Livermore Centre Post Office.

8 March 1886:

Willard Carver became Postmaster for Livermore Centre Post Office.

22 February 1888:

John L. Cummings became Postmaster for Livermore Centre Post Office.

25 September 1890:

Herbert R. Norton became Postmaster for Livermore Centre Post Office.

1893 Livermore Centre Post office name is changed to Livermore Center Post Office.

23 December 1895:

John H. Richmond became Postmaster for Livermore Center Post Office.



10 April 1896:

The circular postmark is approximately 28 mm in diameter with a target killer.

Note: Even though the year is difficult to see, under the microscope, it appears to be 1896. Plus, this stamp was produced after 1894. The CDS still needs to be changed from Livermore Centre after the name of the Post Office was changed to Livermore Center in 1893.

11 September 1897:

George F. Hinds became Postmaster for Livermore Center Post Office.

15 February 1911:

Livermore Center Post Office is closed.

North Livermore

5 May 1824:

North Livermore Post Office opens as part of Oxford County. (See Oxford County for additional early North Livermore information)

5 May 1824:

Reuel Washburn became Postmaster for North Livermore Post Office.

19 January 1830:

Jesse Stone became Postmaster for North Livermore Post Office.

13 December 1841:

Reuel Washburn became Postmaster for North Livermore Post Office.

22 January 1847:

George D. Morton became Postmaster for North Livermore Post Office.

26 December 1849:

Matthew M. Stone became Postmaster for North Livermore Post Office.

31 March 1854:

North Livermore changed to Androscoggin County. Matthew M. Stone remains Postmaster for North Livermore Post Office.

4 February 1858:

Ephraim M. Steadman became Postmaster for North Livermore Post Office.

10 March 1860:

Samuel P. Holman became Postmaster for North Livermore Post Office.

31 May 1861:

Seth D. Washburn became Postmaster for North Livermore Post Office.

8 December 1862:

George D. Norton became Postmaster for North Livermore Post Office.

4 December 1865:

Augustus W. Coolidge became Postmaster for North Livermore Post Office.

27 July 1868:

George Q. Gammon became Postmaster for North Livermore Post Office.

20 April 1870:

Roscoe G. Goding became Postmaster for North Livermore Post Office.

26 September 1877:

Augustus W. Coolidge became Postmaster for North Livermore Post Office.

5 October 1888:

Charles F. Roberts became Postmaster for North Livermore Post Office.

19 March 1889:

Mrs. Hattie L. Coolidge became Postmaster for North Livermore Post Office.

8 December 1905:

Purley L. Cook became Postmaster for North Livermore Post Office.

15 August 1907:

Lena B. Pike became Postmaster for North Livermore Post Office.

18 June 1915:

Sadie E. Haskell became Postmaster for North Livermore Post Office.

13 December 1915:

James H. Whittier became Postmaster for North Livermore Post Office.

5 May 1921:

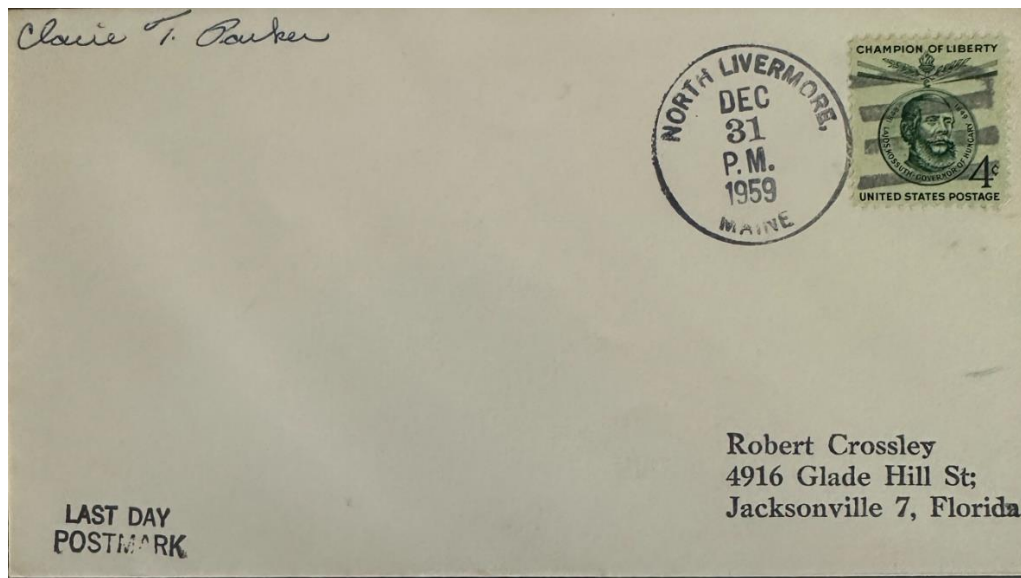
Harold C. Tenney became Acting Postmaster for North Livermore Post Office.

23 July 1921:

Harold C. Tenney became Postmaster for North Livermore Post Office.

8 July 1959:

Claire T. Parker became Acting Postmaster for North Livermore Post Office.



31 December 1959:

The circular Date Stamp is 32 mm in diameter with a four-bar (B) killer. Last Day of Operation. Claire T. Parker was the Acting Postmaster.

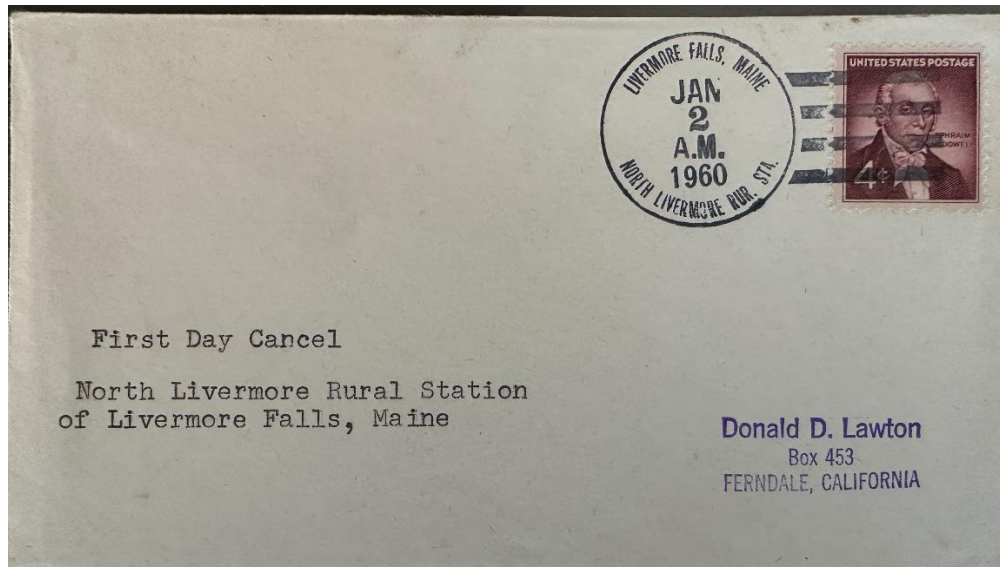
31 December 1959:

North Livermore Post Office closed, replaced by North Livermore Rural Station Livermore Falls Post Office.

North Livermore Rural Station Livermore Falls

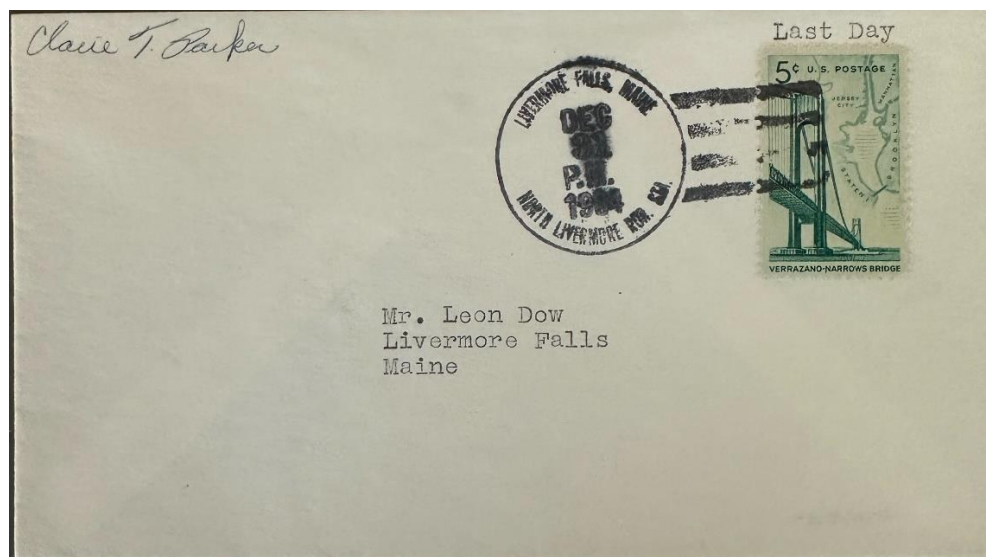
1 January 1960:

North Livermore Rural Station Livermore Falls (North Livermore Rur. Sta. Livermore Falls) opens.



2 January 1960:

The circular Date Stamp is 32.5 mm in diameter with a four-bar (B) killer. First day of operation. The date of opening and the first day of operation differ due to the holiday.



31 December 1964:

The circular Date Stamp is 32.5 mm in diameter with a four-bar (B) killer. Last day of operation. It was signed by Claire T. Parker, the former Acting Postmaster for North Livermore Post Office but now probably considered a postal clerk.

25 December 1964:

North Livermore Rural Station Livermore Falls closed.

South Livermore

19 August 1856:

South Livermore post office opened.

19 August 1856:

George F. Chase became Postmaster for South Livermore Post Office.

31 January 1857: Elbridge G. Bryant became Postmaster for South Livermore Post Office.

7 May 1858:

South Livermore Post Office is closed.

24 May 1858:

South Livermore Post Office is re-established.

24 May 1858:

Job Chase became Postmaster for South Livermore Post Office.

18 June 1877:

George F. Chase became Postmaster for South Livermore Post Office.

8 November 1877:

William S. Moore became Postmaster for South Livermore Post Office.

2 September 1889:

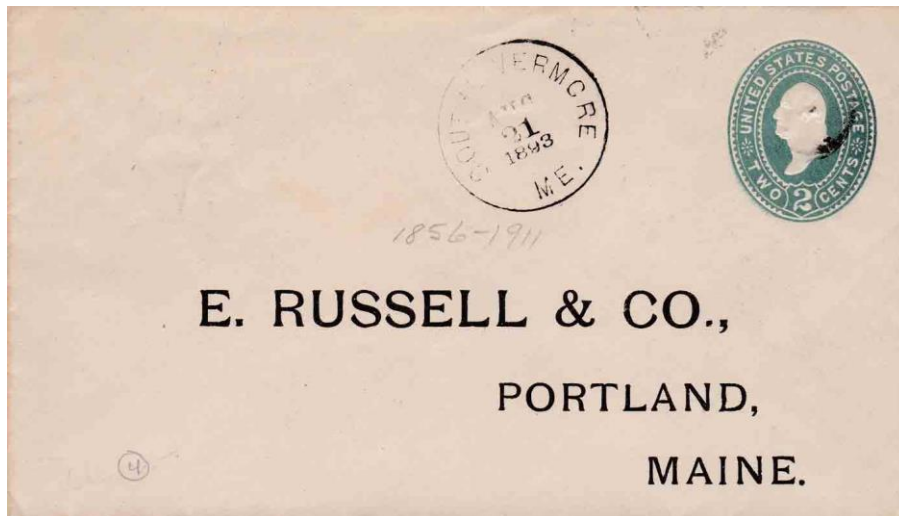
Mrs. Melinda F. Norton became Postmaster for South Livermore Post Office.

5 September 1891:

William Soper became Postmaster for South Livermore Post Office.

17 September 1891:

Elton H. Timberlake became Postmaster for South Livermore Post Office.



1893 August 21:

The circular postmark is approximately 28 mm in diameter.

31 August 1896:

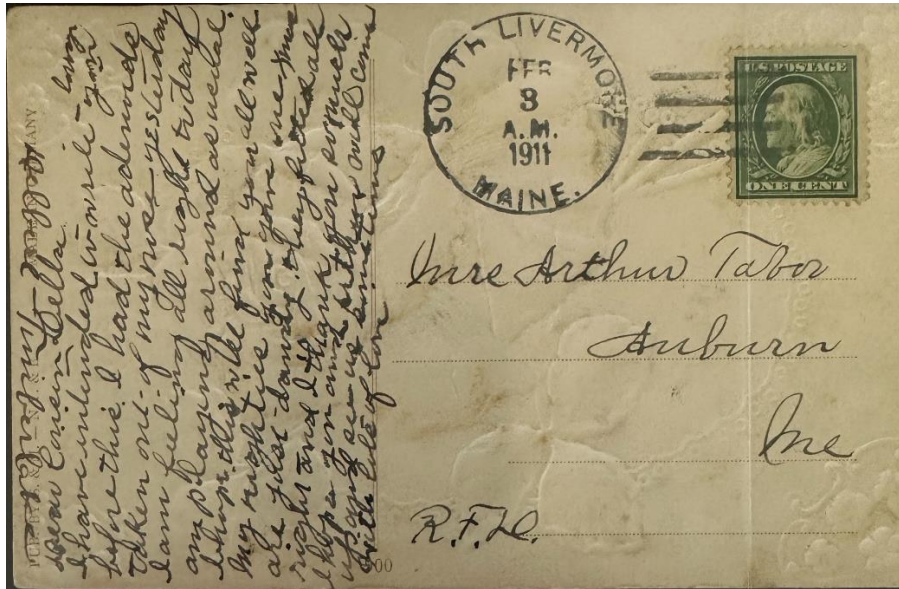
Elizabeth G. Timberlake became Postmaster for South Livermore Post Office.

17 January 1908:

Nettie E. Swift became Postmaster for South Livermore Post Office.

23 April 1908:

Roland S. Timberlake became Postmaster for South Livermore Post Office.



3 February 1911:

The circular Date Stamp is 31 mm in diameter with a four-bar (A) killer.

1911 June 30: South Livermore post office is closed.

Credits:

This document is based on the original Livermore Postal History web page compiled by the V. F. Thomas Co. (2021), with revisions and additions by James Husson and Brian Damien (2023).

Thank you for the contributions to this page by Kelvin Kindahl, James Husson, and the Strout family collection.

And thank you to the Waterville Stamp Club <https://thewatervillestampclub.com> for hosting this project.

Sources:

The Post Offices of Maine 2022, Maine Philatelic Society:

<http://www.mainephilatelic.org/books/TPOOM>

Livermore and East Livermore [maps] from the 1873 *Atlas and History of Androscoggin County, Maine*:

https://digitalmaine.com/atlas_androscoggin_1873/32/

https://digitalmaine.com/atlas_androscoggin_1873/16/

Additional material, including links to official records of postmaster appointments, can be found at Sources for Researching Maine Post Offices, Postmasters, and Postal History: <http://www.mainephilatelic.org/books/post-office-sources.pdf>.