

Livermore Falls Postal History

Androscoggin County, Maine

Last update for this page: 29 March 2023

This page is part of the Maine Postal History website—a project of the Waterville Stamp Club. For more information, see <https://www.thewatervillestampclub.com/mph>.

The Town of Livermore Falls has a complicated history. First, it was part of a larger area incorporated in 1795 as the Town of Livermore. The county line, determined by the Androscoggin River, divided the town. West of the river was Oxford County, and east was Kennebec County.

Eventually, East Livermore was set off and incorporated as a separate town on 1 March 1844. The Town of East Livermore was part of Kennebec County; the western portion remained as the Town of Livermore, and remained in Oxford County. Both towns became part of the newly created Androscoggin County on 31 March 1854. The Town of East Livermore was renamed the Town of Livermore Falls on 3 March 1930.

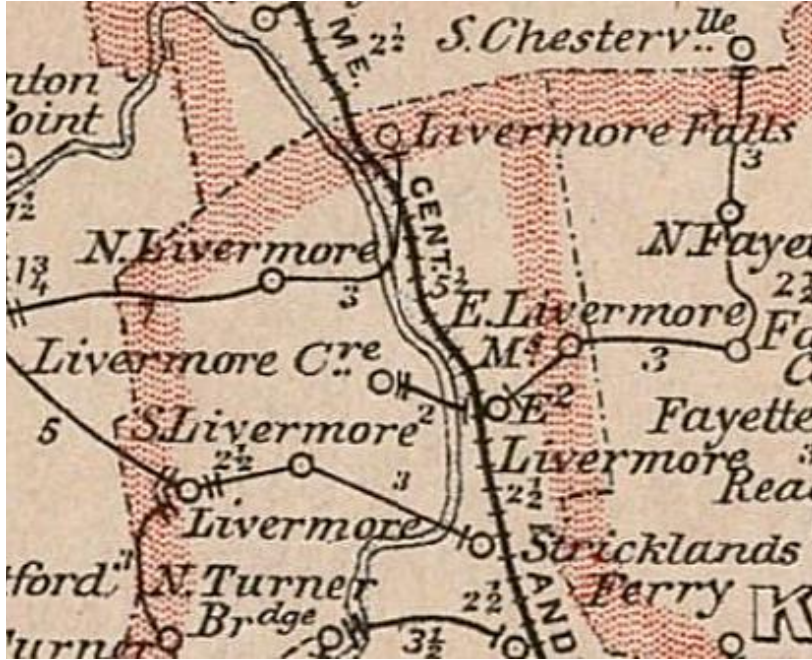
The post offices named East Livermore and Livermore Falls have continued with the same names since they were opened, in 1822 and 1830, respectively. Their names were never affected by the town incorporations or name changes.

Researchers seeking official postal records for the post offices located in what is now the Town of Livermore Falls should be aware that records before 31 March 1854 may be found under Oxford or Kennebec County.

During the history of the Town of Livermore Falls, there have been four post offices. Briefly, the history of these four is as follows:

1. **Brown's Mills** Post Office was established on 5 January 1872 but never operated under that name. On 19 January 1872, it was renamed **East Livermore Mills** Post office, opened, and operated until its closure on 15 February 1912.
2. **East Livermore** Post Office was established on 8 October 1822 in what was the Town of Livermore until 1844, in Kennebec County. and changed to Androscoggin County on 31 March 1854. As of 3 March 1930, it is now located in the Town of **Livermore Falls**, but still operates as **East Livermore** Post Office.
3. **Livermore Falls** Post Office was established on 21 December 1830 – in what was the Town of Livermore until 1844 – and is still operating in 2023.
4. **Strickland's Ferry** Post Office was established on 10 December 1853 and was renamed **Strickland** Post Office on 12 July 1894. Strickland Post Office closed on 31 December 1944.

<https://www.thewatervillestampclub.com/mph>



In 1891 the Town of Livermore Falls (then known as the Town of East Livermore) had four post offices: East Livermore, East Livermore Mills, Livermore Falls, and Stricklands Ferry.

In 1891, the Town of Livermore also had four: Livermore, Livermore Centre, North Livermore, and South Livermore.

Extract from the 1891 Post Route Map of Maine. Map reproduction courtesy of Norman B. Leventhal Map & Education Center at the Boston Public Library.
<https://collections.leventhalmap.org/search/commonwealth:cj82kj790>

Postmarks that collectors have provided from the town of Livermore Falls have been included and are highlighted in blue.

Brown's Mills

[East Livermore](#)

[East Livermore Mills](#)

[Livermore Falls](#)

[Strickland](#)

[Strickland's Ferry](#)

Brown's Mills

5 January 1872:

Brown' Mills Post Office was established but never opened. It was changed to East Livermore Mills.

19 January 1872:

Brown's Mills Post Office discontinued.

East Livermore Note, East Livermore post office was established on 8 October 1822 in Kennebec County and changed to Androscoggin County on 31 March 1854. As of 3 March 1930, the town was named Livermore Falls, but the post office still operates as East Livermore Post Office.

1822 October 8:

East Livermore Post Office opened as part of Oxford County.

1822 October 8:

Francis F. Haines became Postmaster for East Livermore Post Office.

9 February 1839:

William B. Small became Postmaster for East Livermore Post Office.

30 June 1841:

Francis F. Haines became Postmaster for East Livermore Post Office.

2 April 1844:

East Livermore became part of Kennebec County.

20 March 1846:

William B. Small became Postmaster for East Livermore Post Office.

15 August 1851:

Francis F. Haines became Postmaster for East Livermore Post Office.

2 March 1852:

William B. Small became Postmaster for East Livermore Post Office.

11 January 1854:

Francis Merrill became Postmaster for East Livermore Post Office.

31 March 1854:

East Livermore became part of Androscoggin County.

7 July 1854:

Jonathan Lovejoy became Postmaster for East Livermore Post Office.

29 June 1863:

Elisha B. Lovejoy became Postmaster for East Livermore Post Office.

24 April 1865:

Jonathan Lovejoy became Postmaster for East Livermore Post Office.



9 November 1862:

The circular postmark is 25 cm CDS in diameter with a target killer.

24 December 1867:

Amos Hobbs became Postmaster for East Livermore Post Office.

24 September 1868:

Francis J. Folsom became Postmaster for East Livermore Post Office.

29 February 1876:

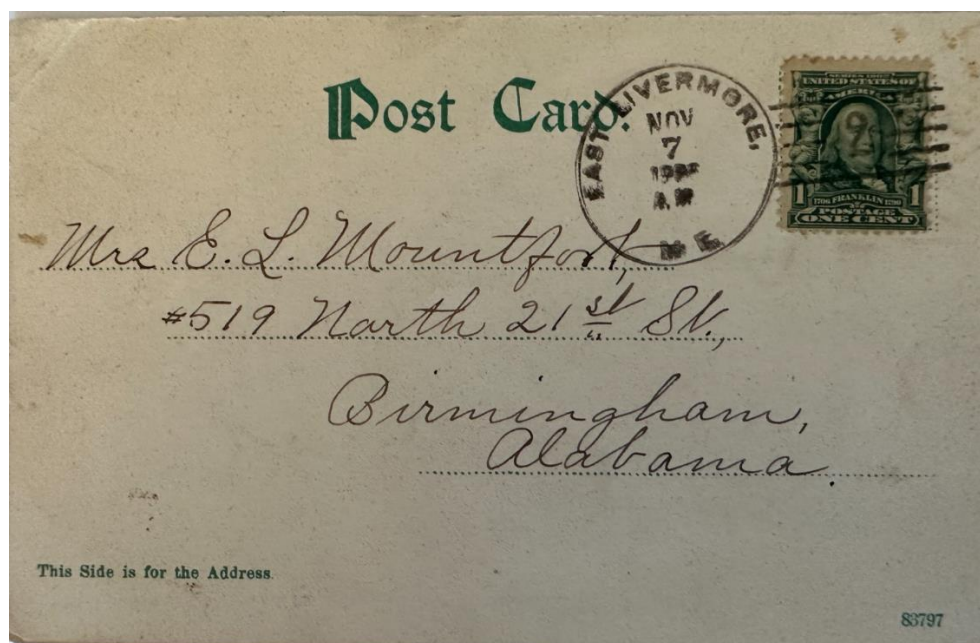
Caleb P. Brown became Postmaster for East Livermore Post Office.

12 August 1878:

Francis J. Folsom became Postmaster for East Livermore Post Office.

5 January 1886:

Ellen M. Folsom became Postmaster for East Livermore Post Office.



7 November 1906:

The circular postmark is 28 cm CDS in diameter (slightly misshaped) with a Doane 3/2 killer.

30 August 1909:

Alphonso D. Cole became Postmaster for East Livermore Post Office.

18 October 1928:

William D. Stephens became Postmaster for East Livermore Post Office.

3 March 1930:

The Town of East Livermore is renamed the Town of Livermore Falls. The name of the East Livermore Post Office is unchanged.

31 August 1948:

Mrs. Ruth Evelyn Guild became Acting Postmaster for East Livermore Post Office.

25 April 1949:

Mrs. Ruth Evelyn Guild became Postmaster for East Livermore Post Office.

31 March 1967:

Mrs. Louise D. Fuller became Acting Postmaster for East Livermore Post Office.

5 March 1968:

Mrs. Louise D. Fuller became Postmaster for East Livermore Post Office.

12 July 1974:

Barbara G. Lyman became Officer-In-Charge for East Livermore Post Office.

1 February 1975:

Barbara G. Lyman became Postmaster for East Livermore Post Office.

21 April 1978:

Lucy Page became Officer-In-Charge for East Livermore Post Office.

9 September 1980:

Vincent W. Cormier became Postmaster for East Livermore Post Office.

Unknown date:

Patricia A. Cormier became Officer-In-Charge for East Livermore Post Office.

7 January 1984:

Patricia B. (Meservey) Albert became Postmaster for East Livermore Post Office.

11 February 1988:

Edward A. Baxter became Officer-In-Charge for East Livermore Post Office.

23 April 1988:

Diane M. Webber became Postmaster for East Livermore Post Office.

25 January 1993:

Lois M. Heikkinen became Officer-In-Charge for East Livermore Post Office.

22 March 1994:

Terrence P. King became Officer-In-Charge for East Livermore Post Office.

20 August 1994:

Terrence P. King became Postmaster for East Livermore Post Office.

29 June 2010:

Karen S. Verrill became Officer-In-Charge for East Livermore Post Office.

19 April 2012:

Michelle Grimbilas became Officer-In-Charge for East Livermore Post Office.

22 December 2012:

Karen S. Verrill became Officer-In-Charge for East Livermore Post Office.

25 January 2014:

Cheryl Dyar became Officer-In-Charge for East Livermore Post Office.

23 August 2014:

East Livermore Post Office became a Remotely Managed Post Office under the direction of the Postmaster of the Livermore Falls Post.

2023:

East Livermore Post Office is still operating.

East Livermore Mills

19 January 1872:

East Livermore Mills Post Office opened.

19 January 1872:

Eli N. Berry became Postmaster for East Livermore Mills Post Office.

3 February 1887:

William A. Francis became Postmaster for East Livermore Mills Post Office.

20 April 1889:

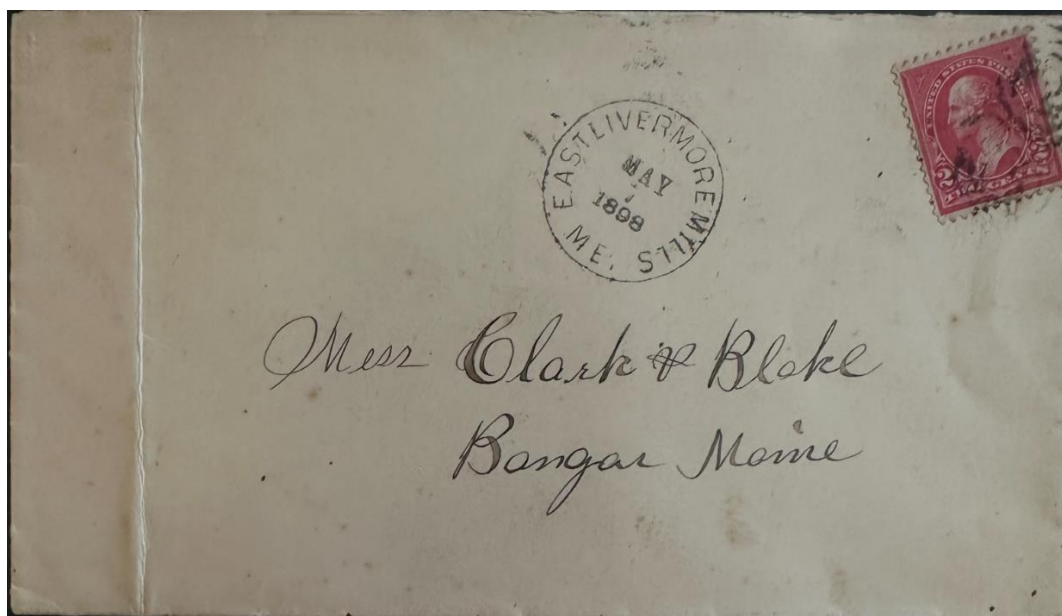
Eli N. Berry became Postmaster for East Livermore Mills Post Office.

24 May 1893:

William A. Francis became Postmaster for East Livermore Mills Post Office.

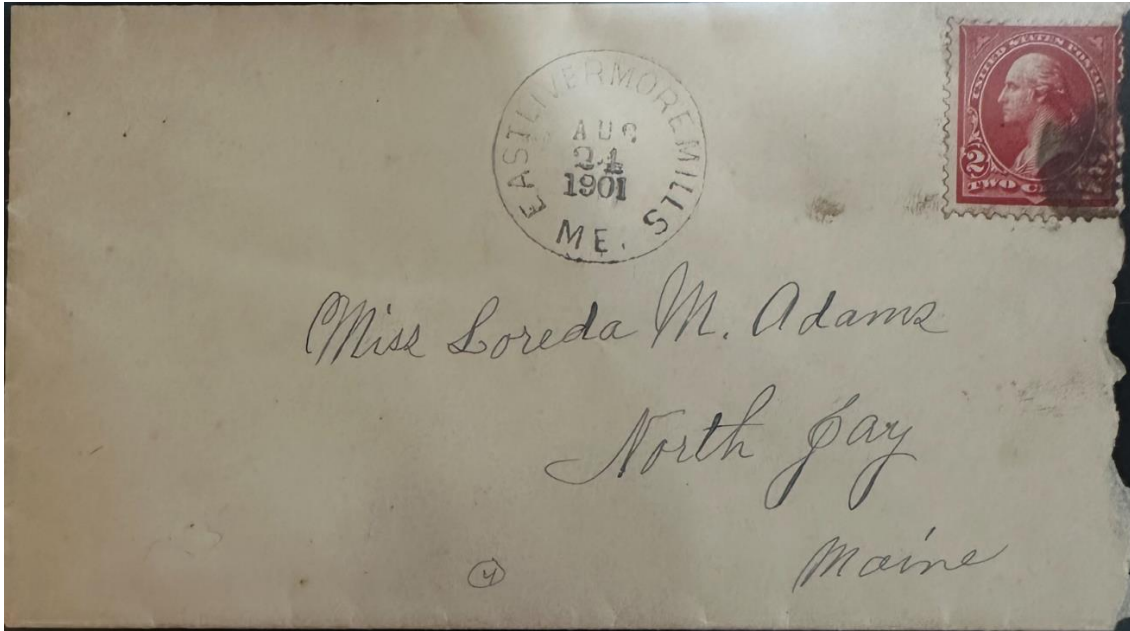
12 May 1897:

Charles H. Keith became Postmaster for East Livermore Mills Post Office.



7 May 1898:

The circular postmark is 27 cm CDS in diameter with a target killer.



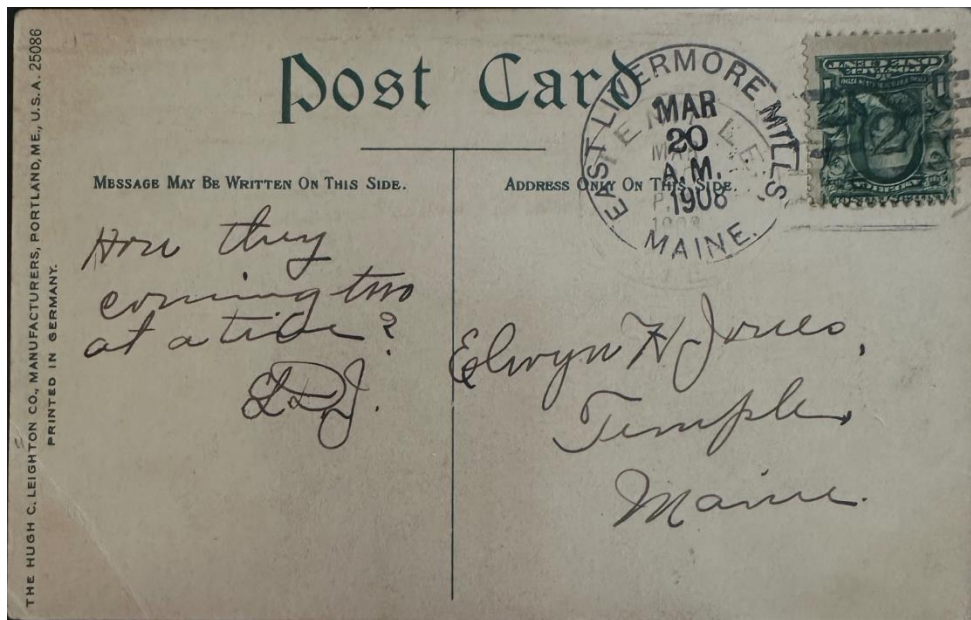
24 August 1901:
The circular postmark is 27 cm CDS in diameter with a cork killer.

3 September 1904:

Isaac H. Webber became Postmaster for East Livermore Mills Post Office.

18 July 1907:

Charles W. Whittier became Postmaster for East Livermore Mills Post Office.



20 March 1908:
The circular postmark is 31 cm CDS in diameter with a Doane 3/2 killer.

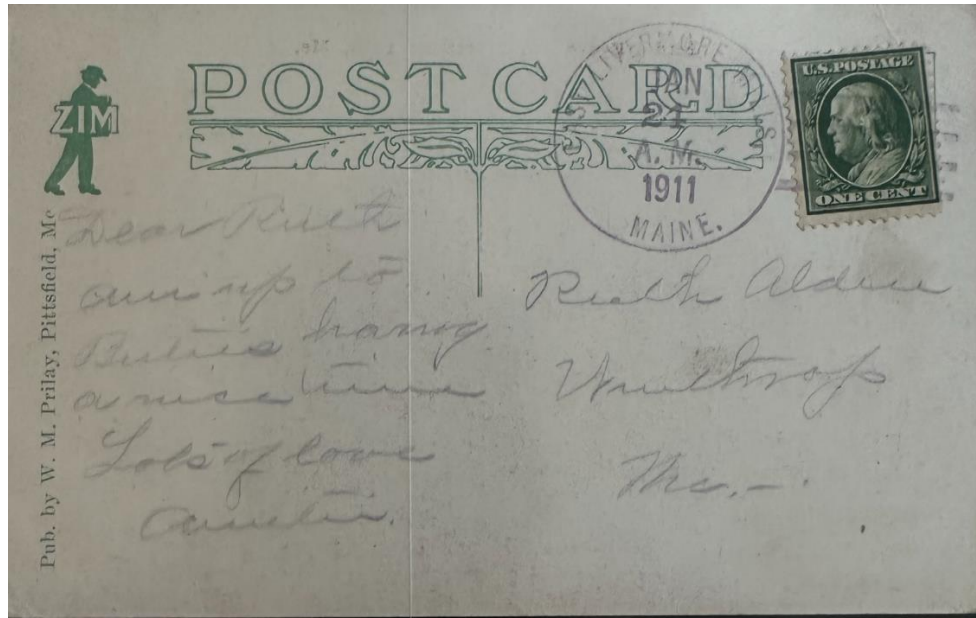


11 January 1909:

The circular postmark is 32 cm CDS in diameter with a four-bar (A) killer.

15 November 1909:

William F. Jernegan became Postmaster for East Livermore Mills Post Office.



21 January 1911:

The circular postmark is 32 cm CDS in diameter four-bar (A) killer.

15 February 1912:

East Livermore Mills Post Office closed.

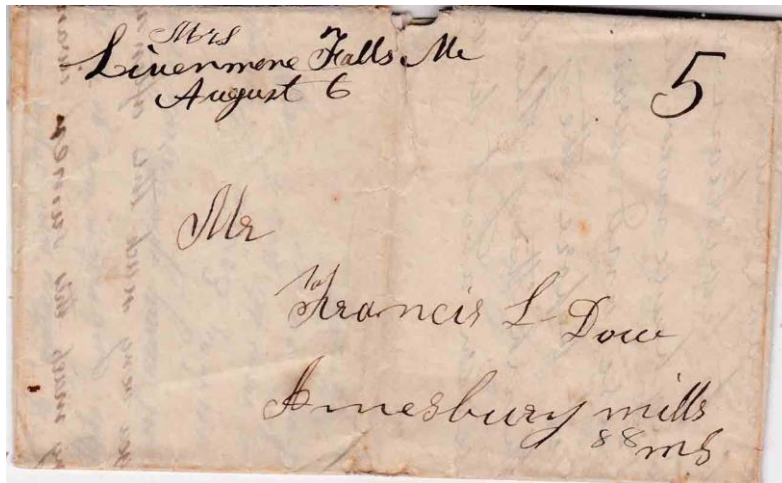
Livermore Falls

12 December 1830:

Livermore Falls post office opened.

21 December 1830:

Elisha Pettingill became Postmaster for Livermore Falls Post Office.



Year? August 6:
Manuscript postmark. (letter)

13 July 1841:

Nathaniel Mayo became Postmaster for Livermore Falls Post Office.

2 April 1844:

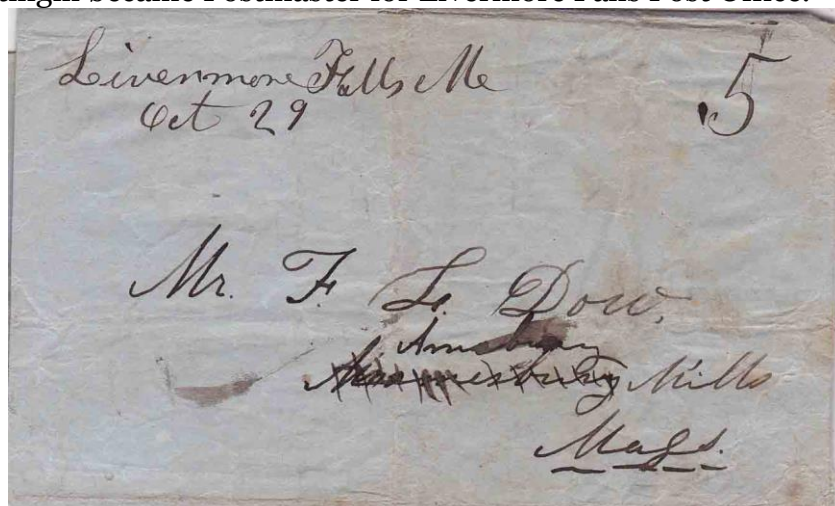
David Hale became Postmaster for Livermore Falls Post Office.

22 August 1845:

Oliver Pettingill became Postmaster for Livermore Falls Post Office.

7 March 1848:

Comfort Pettingill became Postmaster for Livermore Falls Post Office.



1849 October 29:
Manuscript postmark. ([letter \(page 1\)](#), [letter \(page 2\)](#), [letter \(page 3\)](#))

1 July 1861:

Stillman Reed became Postmaster for Livermore Falls Post Office.

22 June 1870:

Alvin Record became Postmaster for Livermore Falls Post Office.

14 September 1885:

Winfield S. Treat became Postmaster for Livermore Falls Post Office.

18 September 1889:

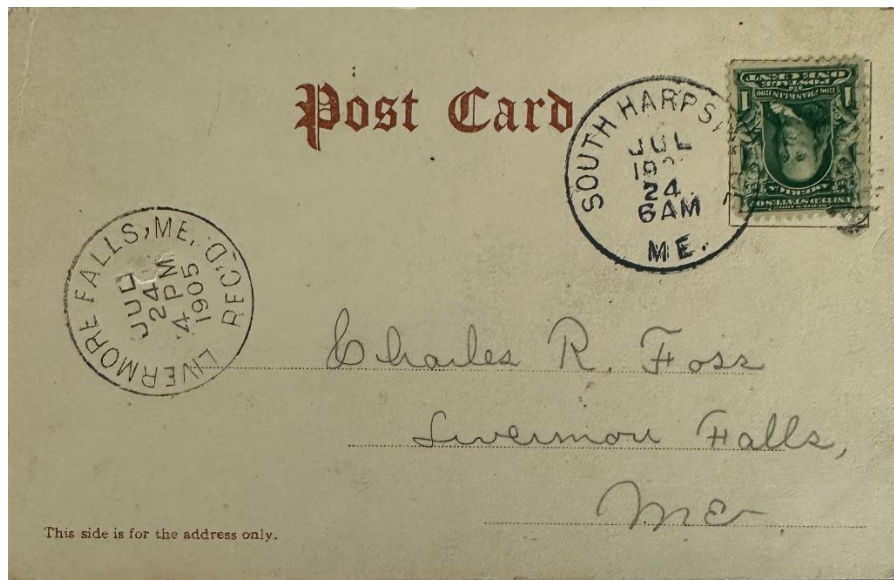
Jonathan F. Jefferds became Postmaster for Livermore Falls Post Office.

15 January 1896:

John L. Cummings became Postmaster for Livermore Falls Post Office.

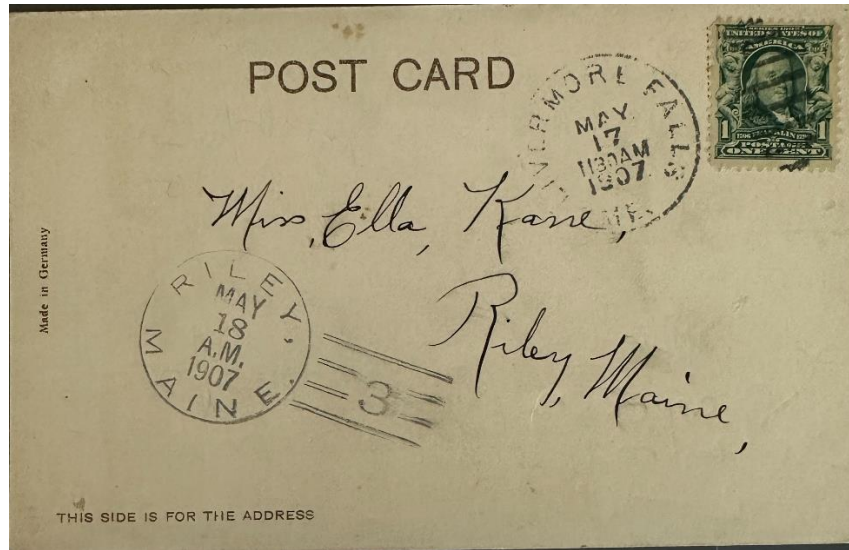
17 January 1900:

Jonathan F. Jefferds became Postmaster for Livermore Falls Post Office.

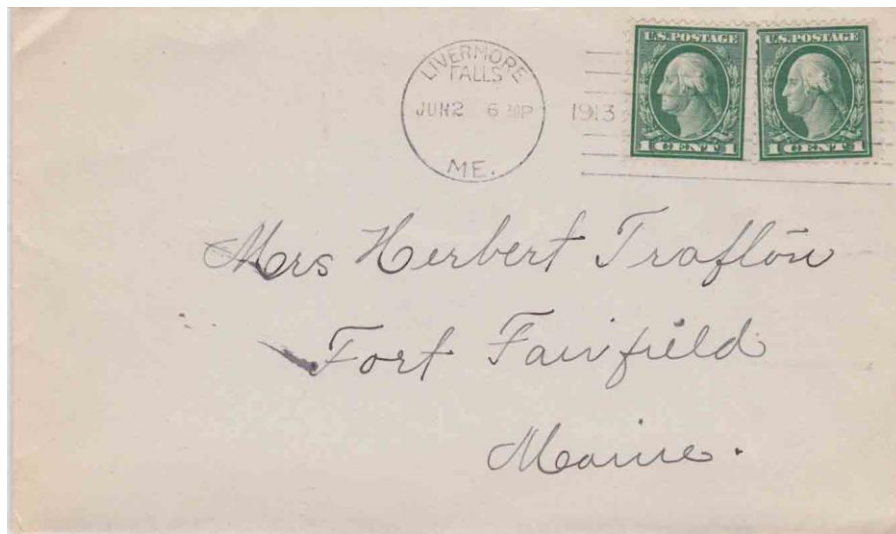


24 July 1905:

The received postmark is 29 mm in diameter.



17 May 1907:
The circular postmark is 29 mm in diameter with an elliptical duplex killer.



3 June 1913:
The circular postmark is 24 mm in diameter with a machine killer. A similar postmark is known to exist from 1914.

17 January 1916:

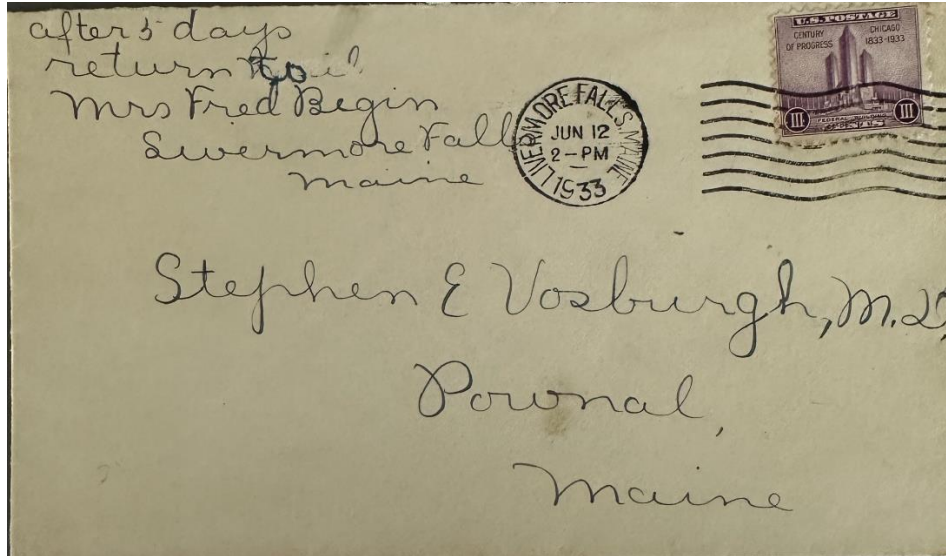
James L. Foster became Postmaster for Livermore Falls Post Office.

6 October 1924:

Ernest A. Fogg became Postmaster for Livermore Falls Post Office.

8 January 1925:

Ernest A. Fogg became Postmaster for Livermore Falls Post Office.



12 June 1933:

The circular postmark is 21 mm in diameter with a seven-wavy line machine killer.

8 August 1933:

Adelard J. Dumais became Acting Postmaster for Livermore Falls Post Office.

17 May 1934:

Adelard J. Dumais became Postmaster for Livermore Falls Post Office.

29 September 1962:

William L. Kinch became Postmaster for Livermore Falls Post Office.

22 August 1964:

William L. Kinch became Postmaster for Livermore Falls Post Office.

27 February 1976:

Leo Whittingham became Officer-In-Charge for Livermore Falls Post Office.

30 June 1976:

Louis B. Poisson became Officer-In-Charge for Livermore Falls Post Office.

28 August 1976:

Rene L. Albert Jr. became Postmaster for Livermore Falls Post Office.

10 September 1987:

Cynthia C. Thurston became Officer-In-Charge for Livermore Falls Post Office.

25 October 1987:

Ron M. Landry became Officer-In-Charge for Livermore Falls Post Office.

20 November 1987:

Jill L. Fortin became Officer-In-Charge for Livermore Falls Post Office.

5 December 1987:

Daniel J. Mancine became Postmaster for Livermore Falls Post Office.

4 June 2002:

Leigh A. Bouchard became Officer-In-Charge for Livermore Falls Post Office.

19 October 2002:

Leigh A. (Bouchard) St. Pierre became Postmaster for Livermore Falls Post Office.

17 December 2004:

Michael W. Meier became Officer-In-Charge for Livermore Falls Post Office.

9 June 2005:

Rebecca A. Powell became Officer-In-Charge for Livermore Falls Post Office.

10 December 2005:

Rebecca A. Powell became Postmaster for Livermore Falls Post Office.

1 November 2006:

Richard P. Weeman became Officer-In-Charge for Livermore Falls Post Office.

22 March 2007:

Brian S. Carrier became Officer-In-Charge for Livermore Falls Post Office.

8 December 2007:

Brian S. Carrier became Postmaster for Livermore Falls Post Office.

4 December 2013:

Tamara Morgan became Officer-In-Charge for Livermore Falls Post Office.

4 November 2014:

Margaret Cosenza became Officer-In-Charge for Livermore Falls Post Office.

2 May 2015:

Louise A. Cote became Postmaster for Livermore Falls Post Office.

6 April 2017:

David W. Brannon became Officer-In-Charge for Livermore Falls Post Office.

15 April 2007:

David W. Branon became Postmaster for Livermore Falls Post Office.

31 March 2018:

Eric C. Parmenter became Postmaster for Livermore Falls Post Office.

16 May 2018:

Erikka Brann became Officer-In-Charge for Livermore Falls Post Office.

3 January 2019:

Lori A. Goddard became Officer-In-Charge for Livermore Falls Post Office.

25 May 2019:

Lori A. Goddard became Postmaster for Livermore Falls Post Office.

2023:

The Livermore Falls post office is currently in operation.

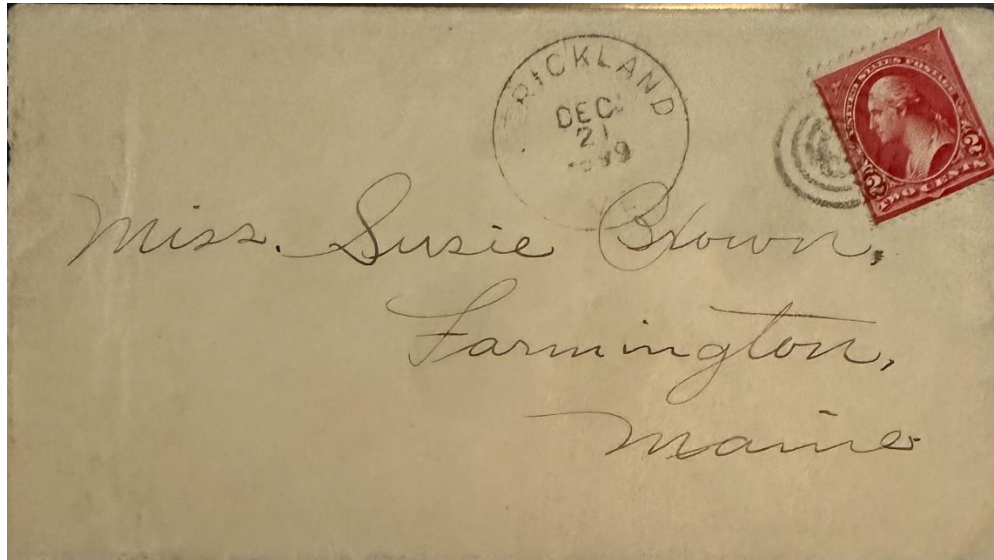
Strickland

12 July 1894:

The former Strickland's Ferry Post Office was renamed Strickland Post Office.

12 July 1894:

Nathan H. Sawtelle became Postmaster for Strickland Post Office.



21 December 1899:

The circular postmark is 27.5 mm in diameter with a four-circle target killer.

29 October 1902:

Levi M. Sawtelle became Postmaster for Strickland Post Office.

23 July 1904:

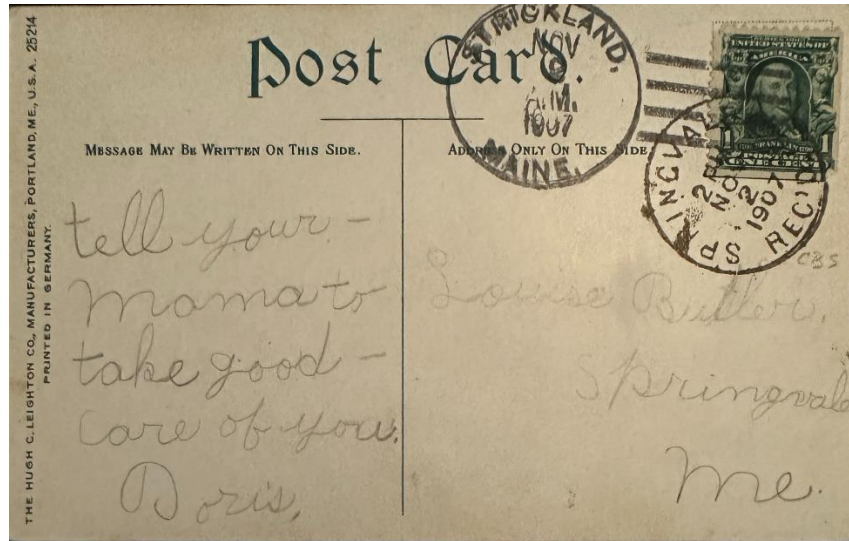
Mae F. Hood is appointed Postmaster for Strickland Post Office but declines.

29 September 1904:

Alfred M. Newell became Postmaster for Strickland Post Office.

8 April 1905:

Nathan H. Sawtelle became Postmaster for Strickland Post Office.

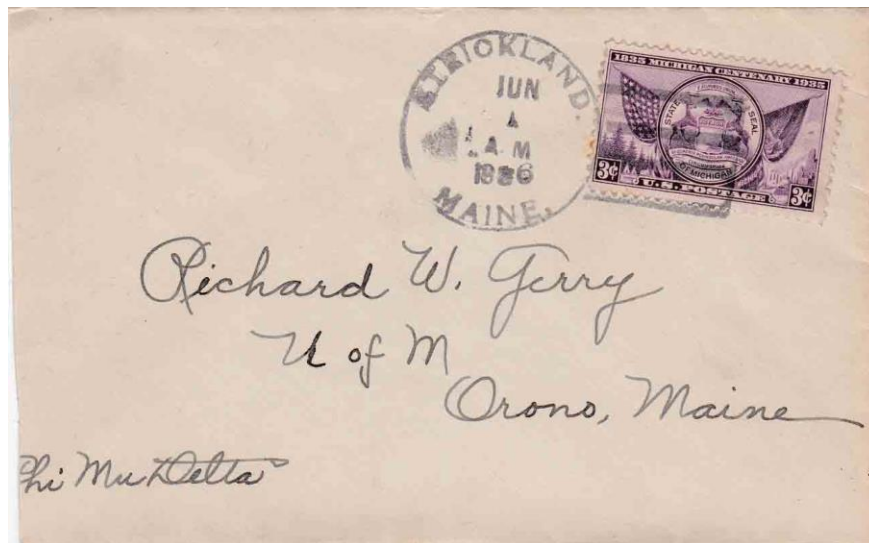


2 November 1907:

The circular postmark is 30.5 mm in diameter with a four-bar (A) killer.

4 July 1928:

Edmond (also seen as Edwin) B. Johnson became Postmaster for Strickland Post Office.



1 June 1936:

The circular postmark is 32.5 mm in diameter with a four-bar (B) killer.

24 November 1941:

Mrs. Gladys H. Lyman became Postmaster for Strickland Post Office.

31 December 1944:

Strickland Post Office closed.

Strickland's Ferry

10 December 1853:

Strickland's Ferry Post Office opened as part of Kennebec County.

10 December 1853:

Solomon Millett became Postmaster for Strickland's Ferry Post Office.

31 March 1854:

Strickland's Ferry Post Office becomes part of the newly formed Androscoggin County.

23 December 1861:

Leonard Knights became Postmaster for Strickland's Ferry Post Office.

25 November 1863:

David P. Hodgdon became Postmaster for Strickland's Ferry Post Office.

9 August 1865:

Alonzo P. Russell became Postmaster for Strickland's Ferry Post Office.

13 April 1866:

Alpheus E. Guild became Postmaster for Strickland's Ferry Post Office.

27 March 1867:

George T. Piper became Postmaster for Strickland's Ferry Post Office.

1 September 1868:

John R. Millett became Postmaster for Strickland's Ferry Post Office.

11 May 1869:

Russell B. Hersey became Postmaster for Strickland's Ferry Post Office.

28 August 1871:

John R. Millett became Postmaster for Strickland's Ferry Post Office.

5 January 1874:

Russell B. Hersey became Postmaster for Strickland's Ferry Post Office.

13 May 1875:

Charles A. Libby became Postmaster for Strickland's Ferry Post Office.

3 May 1877:

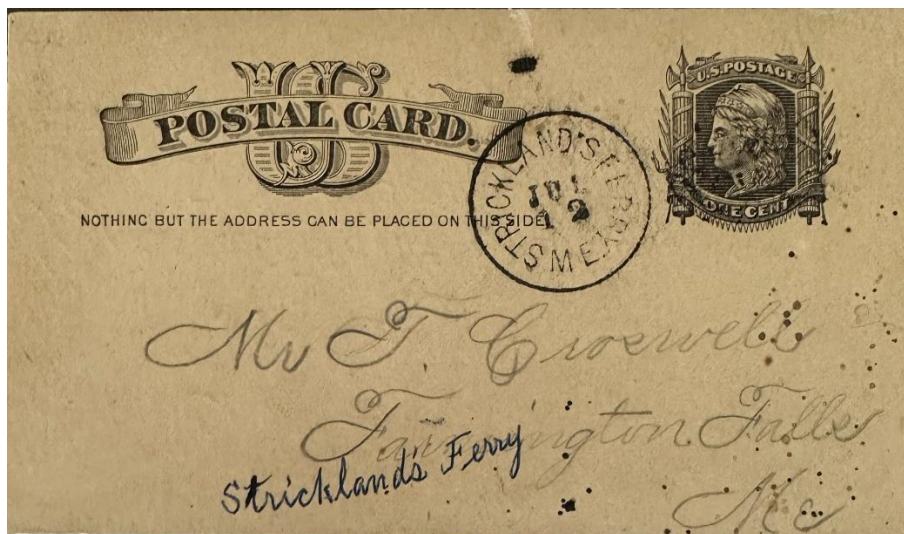
Frank H. Sawtelle became Postmaster for Strickland's Ferry Post Office.

11 December 1877:

Albert Caswell became Postmaster for Strickland's Ferry Post Office.

21 March 1878:

George D. Emery became Postmaster for Strickland's Ferry Post Office.

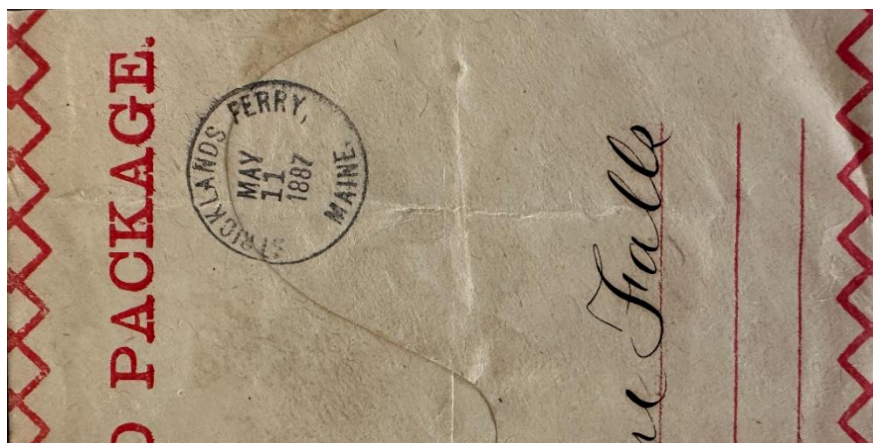


12 July 1883: (date confirmed by contents)

The circular postmark is 26 mm in diameter with a partial target killer.

20 February 1886:

Nathan H. Sawtelle became Postmaster for Strickland's Ferry Post Office.



11 May 1887:

The circular postmark is 26 mm in diameter with no killer.

9 April 1891:

John A. Lamb became Postmaster for Strickland's Ferry Post Office.



Unknown date: Double ring circular blue postmark, size unknown.

12 July 1894:

Strickland's Ferry Post Office was renamed Strickland.

Credits:

This document is based on the original Livermore Falls Postal History web page compiled by the V. F. Thomas Co. (2021), with revisions and additions by James Husson and Brian Damien (2023).

Thank you for the contributions to this page by Kelvin Kindahl, James Husson, and the Strout family collection.

And thank you to the Waterville Stamp Club <https://thewatervillestampclub.com> for hosting this project.

Sources:

The Post Offices of Maine 2022, Maine Philatelic Society:
<http://www.mainephilatelic.org/books/TPOOM>

Livermore and East Livermore [maps] from the 1873 *Atlas and History of Androscoggin County, Maine*:

https://digitalmaine.com/atlas_androscoggin_1873/32/
https://digitalmaine.com/atlas_androscoggin_1873/16/

Additional material, including links to official records of postmaster appointments, can be found at Sources for Researching Maine Post Offices, Postmasters, and Postal History: <http://www.mainephilatelic.org/books/post-office-sources.pdf>.