

# Mapleton Postal History

## Aroostook County, Maine

Last update for this page: 29 February 2024

This page is part of the Maine Postal History website—a project of members of the Maine Philatelic Society. For more information, see <http://www.mainephilatelic.org/mph>.

---

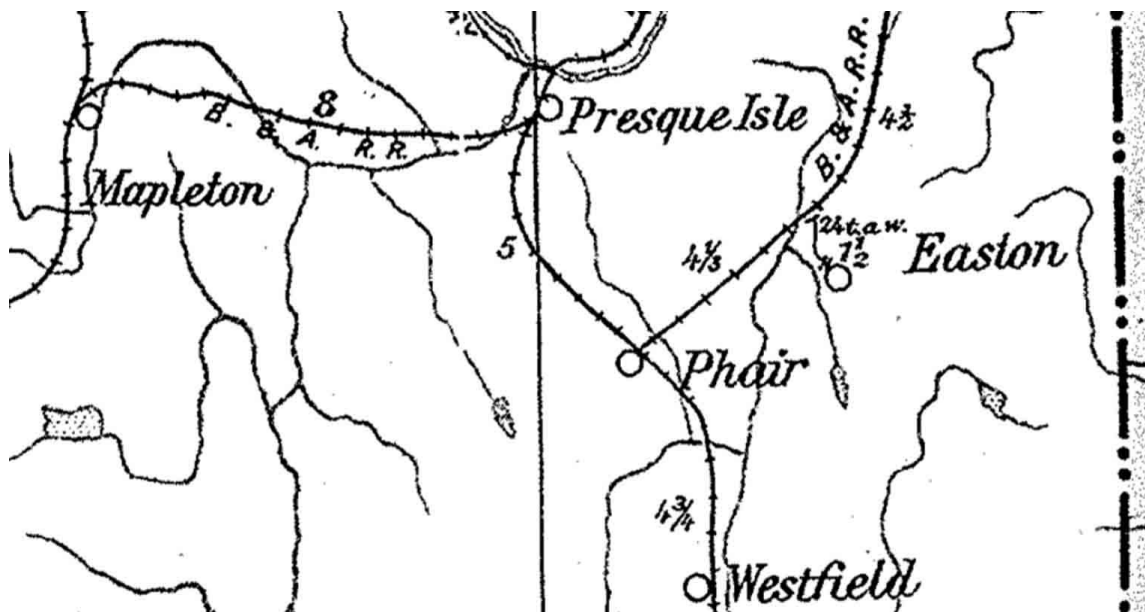
Mapleton is a town in Aroostook County, incorporated on March 5, 1880, from Mapleton Plantation.

During the history of Mapleton, there has been only one post office.

Briefly, the history of this one is as follows:

1. Mapleton Post Office was established on 25 October 1877 and is still operating.

In 1914, there was one post office in Mapleton: Mapleton.



---

(source: Post Route Map of the State of Maine 1914)

<http://www.mainephilatelic.org/PostRouteMaps/MainePostRouteMap1914.pdf>

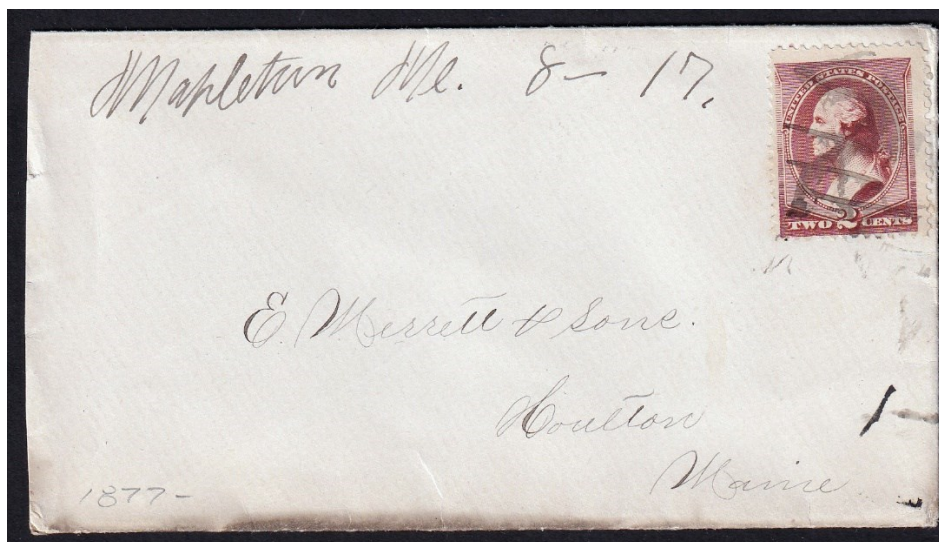
Post Offices from Mapleton are listed below. In addition, postmarks that collectors have provided from the towns/villages associated with Mapleton for this project have been included and are highlighted in blue.

Mapleton

**Mapleton**

1877 October 25:

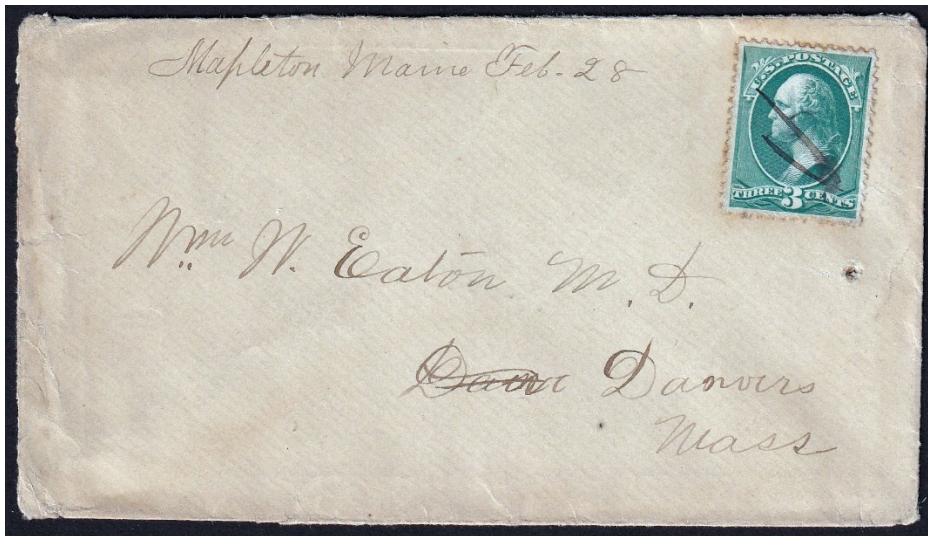
Mapleton Post Office opened.



17 August 1877:  
Manuscript postmark and killer.

25 October 1877:

Albert Ball became the Postmaster for the Mapleton Post Office.



28 February 1879:  
Manuscript postmark and killer.

29 May 1882:

James McGlaulin became the Postmaster for the Mapleton Post Office.



13 December 1895:  
The circular postmark is 27 mm in diameter with a four-circle target killer.

7 July 1896:

John Waddell became the Postmaster for the Mapleton Post Office.



8 November 1902:

Wilber J. Thomas became the Postmaster for the Mapleton Post Office.



6 February 1907:

The circular postmark is 31 mm in diameter with a four-circle target killer.

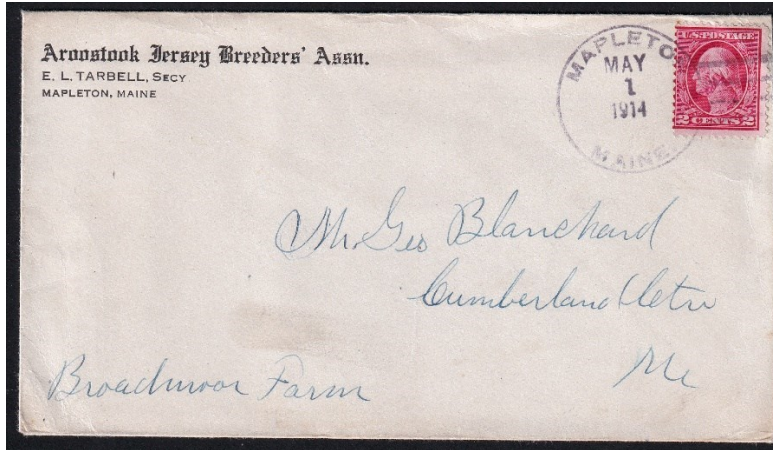
15 May 1907:

Loren E. Wilcox became the Postmaster for the Mapleton Post Office.



1 October 1912:

The circular postmark is 32 mm in diameter with a four-bar (A) killer.



1 May 1914:

The circular postmark is 32 mm in diameter with a four-bar (A/2) killer.

24 October 1914:

Carrie M. Hammond became the Postmaster for the Mapleton Post Office.

22 January 1916:

Carrie M.H. Dudley became the Postmaster for the Mapleton Post Office.

25 January 1922:

Rose McLaughlin became the Postmaster for the Mapleton Post Office.

1 April 1923:

Mapleton Post Office became a Presidential Post Office until 30 June 1934.

18 September 1924

Hattie M. Higgins became the Acting Postmaster for the Mapleton Post Office.

8 December 1924:

Hattie M. Higgins became the Postmaster for the Mapleton Post Office.

1 July 1935:

Presidential Office again.

9 July 1935:

Delta F. Smith became the Acting Postmaster for the Mapleton Post Office.

17 March 1936:

Delta F. Smith became the Postmaster for the Mapleton Post Office.

15 February 1944:

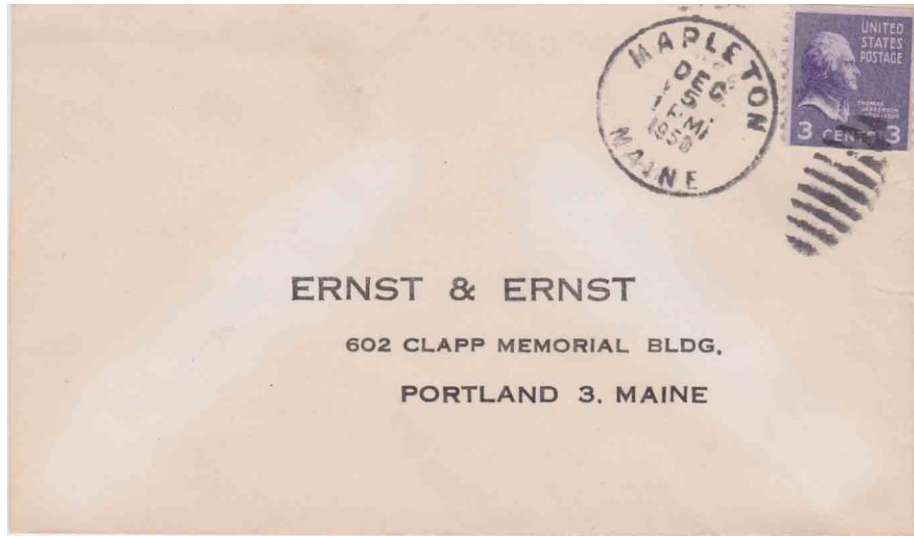
Leland Watt became the Acting Postmaster for the Mapleton Post Office.

15 July 1944:

Hattie M. Higgins became the Acting Postmaster for the Mapleton Post Office.

17 March 1945:

Hattie M. Higgins became the Postmaster for the Mapleton Post Office.



5 December 1950:

The circular postmark is 29.5 mm in diameter with a nine-bar oval duplex killer.

9 November 1953: (this date is from the postmaster record book – 30 September 1953 is used by Postmaster Finder)

William C. Lint became the Acting Postmaster for the Mapleton Post Office.

2 August 1954:

William C. Lint became the Postmaster for the Mapleton Post Office.

13 August 1976:

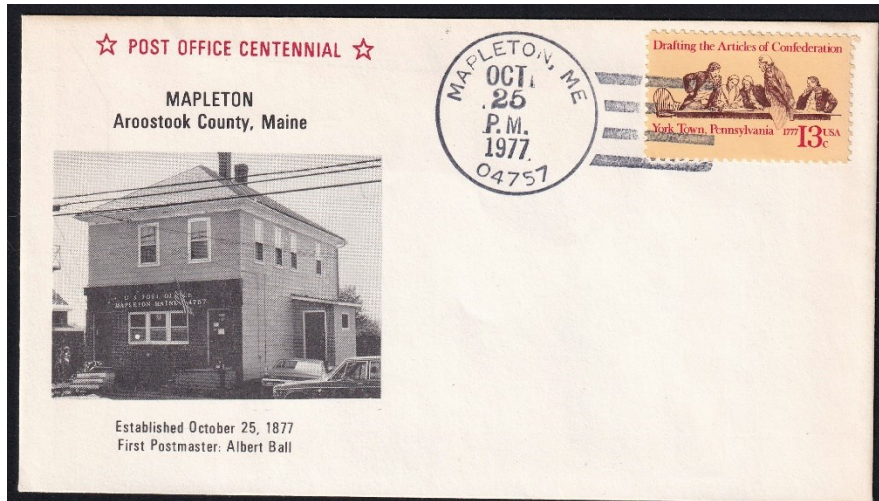
Margaret M. Brown became the Acting Postmaster for the Mapleton Post Office.

13 December 1976:

Darrell G. Martin became the Acting Postmaster for the Mapleton Post Office.

29 January 1977:

Margaret M. Brown became the Postmaster for the Mapleton Post Office.



25 October 1977:

The circular postmark is 31 mm in diameter with a four-bar (F/2a) killer.

24 May 1984.

John D. Miller became the Acting Postmaster for the Mapleton Post Office.

18 August 1984:

Nancy T. Ash became the Postmaster for the Mapleton Post Office.

30 January 2009:

Sharon J. Crane became the Acting Postmaster for the Mapleton Post Office.

22 December 2009:

Kimberly R. Hurless-Seger became the Acting Postmaster for the Mapleton Post Office.

25 June 2010:

Robert P. Plante became the Acting Postmaster for the Mapleton Post Office.

2 August 2012:

Stuart Turner became the Acting Postmaster for the Mapleton Post Office.

23 October 2012:

Joseph Conant became the Acting Postmaster for the Mapleton Post Office.

7 September 2013:

Mapleton post office was converted to a Level 6 (6-hour) Remotely Managed Post Office under the direction of the Postmaster of the Presque Isle post office.

23 January 2024:

Mapleton Post Office, 1754 Main Street, Mapleton, ME 04757, is still operating. GPS 46° 40' 53" N 68° 09' 43" W.



Mapleton Post Office 3 March 2017:  
Photo Credit Laura Chase

---

Credits:

This document is based on the original web page compiled by the V. F. Thomas Co. (2021), with revisions and additions by James Husson and Brian Damien (2024).

Thank you for the contributions to this page by the Strout Family, James Husson, and Max Lynds.

Thank you to the Waterville Stamp Club (<https://thewatervillestampclub.com>) for helping ensure this project's continuity.



Sources:

The Post Offices of Maine 2022, Maine Philatelic Society:

<http://www.mainephilatelic.org/books/TPOOM>

Washburn (T13R3) & Wade (T13R4), Castle Hill (T12R4) & Mapleton (T12R3) Plantations [map] from the 1877 Atlas of Aroostook County, Maine:

[https://digitalmaine.com/atlas\\_aroostook\\_1877/37/](https://digitalmaine.com/atlas_aroostook_1877/37/)

National Archives Catalog, Postmaster Appointments for Aroostook County, Maine

<https://catalog.archives.gov/id/78746425>

Postmaster Finder by City:

<https://about.usps.com/who/profile/history/postmaster-finder/postmasters-by-city.htm>

Additional material, including links to official records of postmaster appointments, can be found at Sources for Researching Maine Post Offices, Postmasters, and Postal History:

<http://www.mainephilatelic.org/books/post-office-sources.pdf>.