

Mars Hill Postal History

Aroostook County, Maine

Last update for this page: 29 February 2024

This page is part of the Maine Postal History website—a project of members of the Maine Philatelic Society. For more information, see <http://www.mainephilatelic.org/mph>.

Mars Hill is a town in Aroostook County, Maine, United States. It was incorporated on February 21, 1867.

During the history of Mars Hill, there have been two post offices.

Briefly, the history of these two is as follows:

1. Mars Hill (1) Post Office was established on 6 June 1854; on 21 September 1861, it was renamed Alva Post Office (in Blaine).
2. Mars Hill (2) Post Office opened on 31 December 1861 and is still operating.

[What does it mean when there is a \(1\) or \(2\) after the name of a post office?](#)

In 1914, there was only one post office in Mars Hill: Mars Hill (2)



(source: Post Route Map of the State of Maine 1914)

<http://www.mainephilatelic.org/PostRouteMaps/MainePostRouteMap1914.pdf>

Post Offices from Mars Hill are listed below. In addition, postmarks that collectors have provided from the towns/villages associated with Mars Hill for this project have been included and are highlighted in blue.

Mars Hill (1)

[Mars Hill \(2\)](#)

Mars Hill (1) (Note: There were two post offices in Maine named Mars Hill at different times and locations. The (1) is just a notation. It does not appear in the postmarks and is only used by postal historians and collectors to differentiate between the different post offices.)

6 June 1854:

Mars Hill (1) post office opened.

6 June 1854:

Dennis Getchell became Postmaster for the Mars Hill (1) Post Office.

21 September 1861:

Mars Hill (1) post office was renamed Alva Post Office (in Blaine).

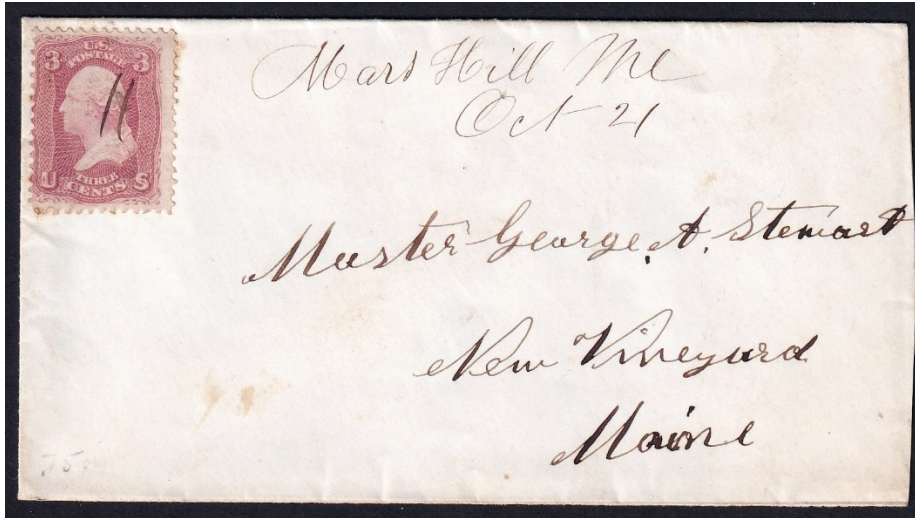
Mars Hill (2) (Note: There were two post offices in Maine named Mars Hill at different times and locations. The (2) is just a notation. It does not appear in the postmarks and is only used by postal historians and collectors to differentiate between the different post offices.)

1861 December 31:

Mars Hill (2) post office opened.

31 December 1861:

Sewall N. Pierce became the Postmaster for the Mars Hill (2) Post Office.



21 October 1866:
Manuscript postmark and killer.



25 March 1881:
Manuscript postmark and killer.

2 February 1886:

Howard W. Safford became the Postmaster for the Mars Hill (2) Post Office.



11 May 1887:

The outer ring of the double-ringed postmark is 26 mm in diameter with a circle grid killer.

29 August 1889:

Benjamin F. Pierce became the Postmaster for the Mars Hill (2) Post Office.

31 August 1893:

John E. York became the Postmaster for the Mars Hill (2) Post Office.

20 September 1897:

Benjamin F. Pierce became the Postmaster for the Mars Hill (2) Post Office.



10 September 1906:

The circular postmark is 29.5 mm in diameter with an oval-thin bar duplex killer.



28 October 1910:

The circular postmark is 30 mm in diameter with an eight-thick bar oval duplex killer.

1 January 1914:

Mars Hill Post Office became a Presidential Post Office.

4 December 1922:

Maude E. Pierce became the Postmaster for the Mars Hill (2) Post Office.

5 April 1927:

Herrick L. Dillen became the Acting Postmaster for the Mars Hill Post Office.

28 March 1929:

Clarence H. Pierce became the Acting Postmaster for the Mars Hill Post Office.

18 September 1929:

Clarence H. Pierce became the Postmaster for the Mars Hill (2) Post Office.

10 October 1933:

Leo V. Keenan became the Acting Postmaster for the Mars Hill Post Office.

23 May 1934:

Leo V. Keenan became the Postmaster for the Mars Hill (2) Post Office.



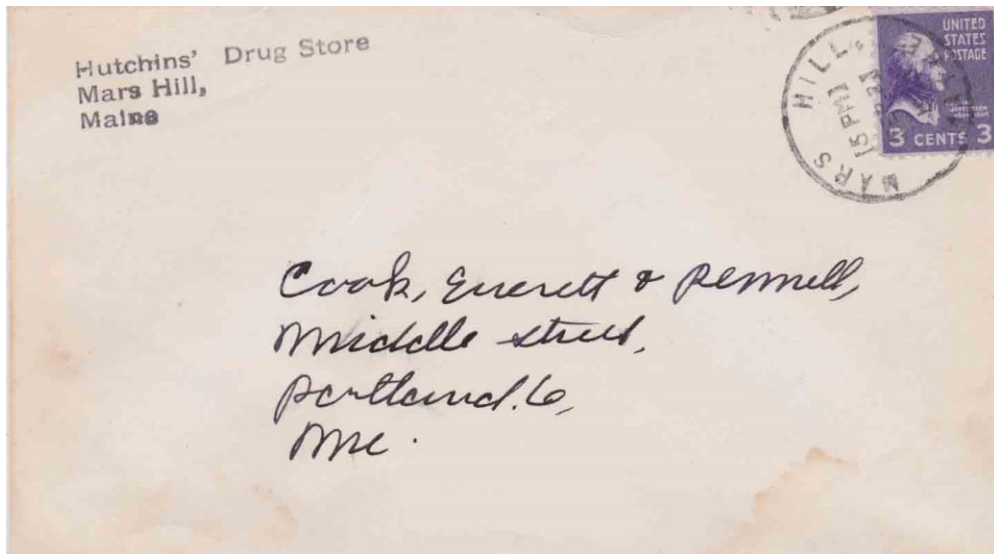
28 December 1937:

The outer circle of the double-ringed circular postmark is 30 mm in diameter, with the CDS also used as the killer.



19 May 1938:

The circular postmark is 30 mm in diameter with a six-bar elliptical duplex/1 killer.



2 September 1943:

The circular postmark is 30 mm in diameter with a partial duplex killer.



24 August 1954:

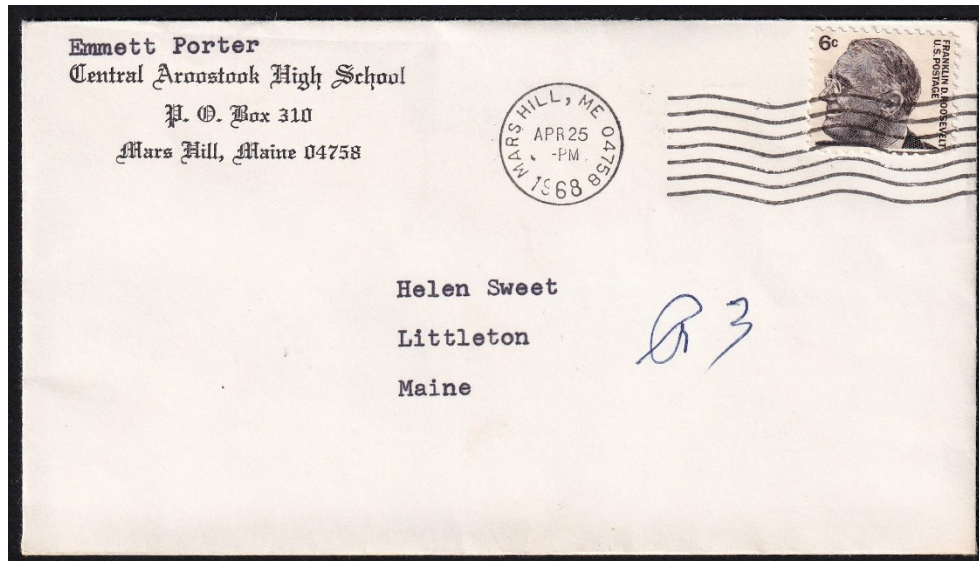
The misshapen circular postmark is 30 mm in diameter with an unknown killer.

10 October 1958:

Gordon L. Stitham became the Acting Postmaster for the Mars Hill Post Office.

26 July 1963:

Gordon L. Stitham became the Postmaster for the Mars Hill (2) Post Office.



25 April 1968:

The circular postmark is 21 mm in diameter with a seven-wavy line International Machine killer.

3 January 1984:

Robert D. Ouellette became the Officer-in-Charge for the Mars Hill Post Office.

28 April 1984:

Margaret M. Brown became the Postmaster for the Mars Hill (2) Post Office.

30 November 1989:

Donnie E. Beals became the Officer-in-Charge for the Mars Hill Post Office.

2 December 1989:

Clinton H. Watson became the Postmaster for the Mars Hill (2) Post Office.

13 November 1992:

John E. Fraser became the Officer-in-Charge for the Mars Hill Post Office.

6 March 1993:

Gregory A. Voisine became the Postmaster for the Mars Hill (2) Post Office.

30 December 1996:

David Schools became the Officer-in-Charge for the Mars Hill Post Office.

30 January 1997:

Donnie Beals became the Officer-in-Charge for the Mars Hill Post Office.

3 March 1997:

Kevin R. Condon became the Postmaster for the Mars Hill (2) Post Office.

1 June 2012:

Sharon J. Crane became the Officer-in-Charge for the Mars Hill Post Office.

6 October 2012:

Sharon J. Crane became the Postmaster for the Mars Hill (2) Post Office.

25 September 2019:

Kathleen A. Gauvin became the Officer-in-Charge for the Mars Hill Post Office.

12 October 2019:

Erich J. Simpson became the Postmaster for the Mars Hill (2) Post Office.

6 November 2020:

Jeremiah Harris became the Officer-in-Charge for the Mars Hill Post Office.

9 April 2022:

Jeremiah Harris became the Postmaster for the Mars Hill (2) Post Office.

24 January 2024:

Mars Hill (2) post office still operates at 7 Lincoln Street, Mars Hill, ME 04758. GPS 46° 30' 46 N" 67° 51' 58" W.



July 2023:
Photo Credit Dennis Dixon

What does it mean when there is a (1) or (2) after the name of a post office?

Sometimes the numbers (1) and (2) appear after the name of a post office. These numbers indicate the (first) and (second) localities of post offices of the same name. For example, if the post office name is used for two separate post offices in two respective villages at different times, they will be identified in this manner. These numbers do not necessarily indicate time periods. These numbers do not represent numbered stations. Some larger places, like Auburn, have postal stations with numbers. These differ from the post offices we call Auburn (1), Auburn (2), etc. Also: the numbers do not appear in postmarks or official post office publications. However, they are used by postal historians and collectors to refer to different post offices, as noted above.

Credits:

This document is based on the original web page compiled by the V. F. Thomas Co. (2021), with revisions and additions by James Husson and Brian Damien (2024).

Thank you for the contributions to this page by the Strout Family, James Husson, and Max Lynds.

Thank you to the Waterville Stamp Club (<https://thewatervillestampclub.com>) for helping ensure this project's continuity.

Sources:

The Post Offices of Maine 2022, Maine Philatelic Society:
<http://www.mainephilatelic.org/books/TPOOM>

Mars Hill & Blaine [map] from the 1877 Atlas of Aroostook County, Maine:
https://digitalmaine.com/atlas_aroostook_1877/32/

National Archives Catalog, Postmaster Appointments for Aroostook County, Maine
<https://catalog.archives.gov/id/78746425>

Postmaster Finder by City:
<https://about.usps.com/who/profile/history/postmaster-finder/postmasters-by-city.htm>

Additional material, including links to official records of postmaster appointments, can be found at Sources for Researching Maine Post Offices, Postmasters, and Postal History:
<http://www.mainephilatelic.org/books/post-office-sources.pdf>