

Portage Lake Postal History

Aroostook County, Maine

Last update for this page: 4 April 2024

This page is part of the Maine Postal History pages—a project of the Maine Philatelic Society.
For more information, see <http://www.mainephilatelic.org/mph>

Portage Lake is a town in Aroostook County. It was settled in 1844 and organized on September 2, 1850, from the township T15 R3 WELS. After several confirmations of its plantation status, it was incorporated as a town on March 24, 1909.

During the history of Portage Lake, there have been two post offices.

Briefly, the history of these two is as follows:

1. Portage Post Office was established on 6 November 1883 and is still operational.
2. Portage Lake Post Office opened on 21 February 1867 and closed on 17 February 1871.

In 1914, there was only one post office in Portage Lake: Portage.

Source: Post Route Map of the State of Maine, 1914.

<http://www.mainephilatelic.org/postroutemaps/MainePostRouteMap1914.pdf>



Post Offices from Portage Lake are listed below. In addition, postmarks that collectors have provided have been included.

Portage
Portage Lake

Portage

6 November 1883:

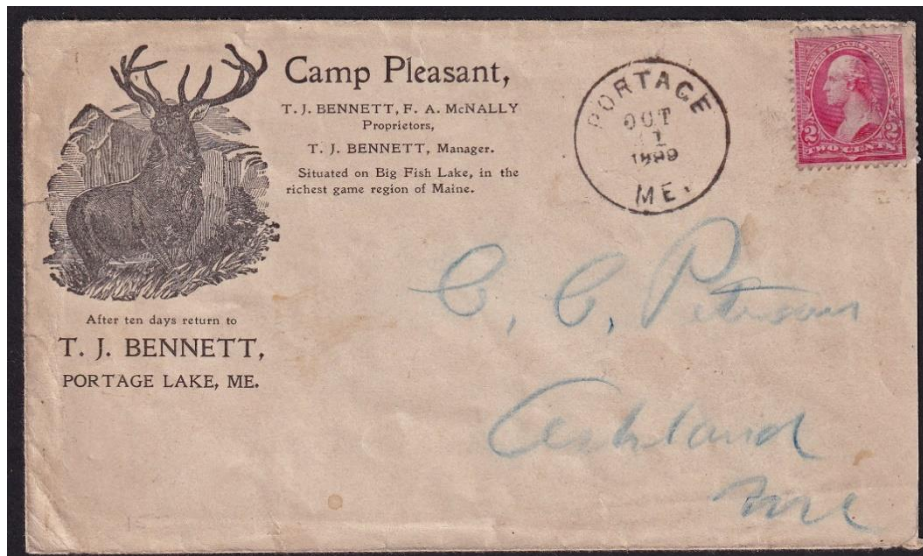
Portage post office opened.

6 November 1883:

Orren L. Stevens became the Postmaster for the Portage Post Office.

27 May 1898:

George H. Brown became the Postmaster for the Portage Post Office.



1 October 1899:

The circular postmark is 27 mm in diameter with light smudge killer.



5 December 1903:
The circular postmark is 29 mm in diameter with a nine-bar oval duplex killer.

23 June 1904:

Will E. Ross became the Postmaster for the Portage Post Office.



7 February 1907:
The circular postmark is 22.5 mm in diameter with a Doane 2/3 killer.

10 October 1914:

Cyrus H. Kneeland became the Postmaster for the Portage Post Office.

6 October 1921:

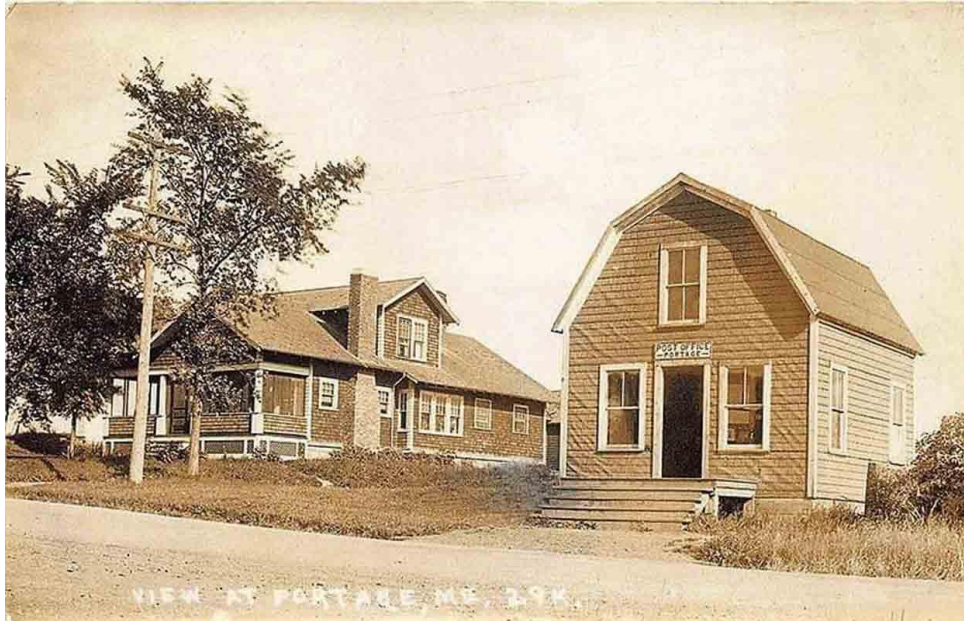
Reginald B. Bartlett became the Postmaster for the Portage Post Office.

26 December 1927:

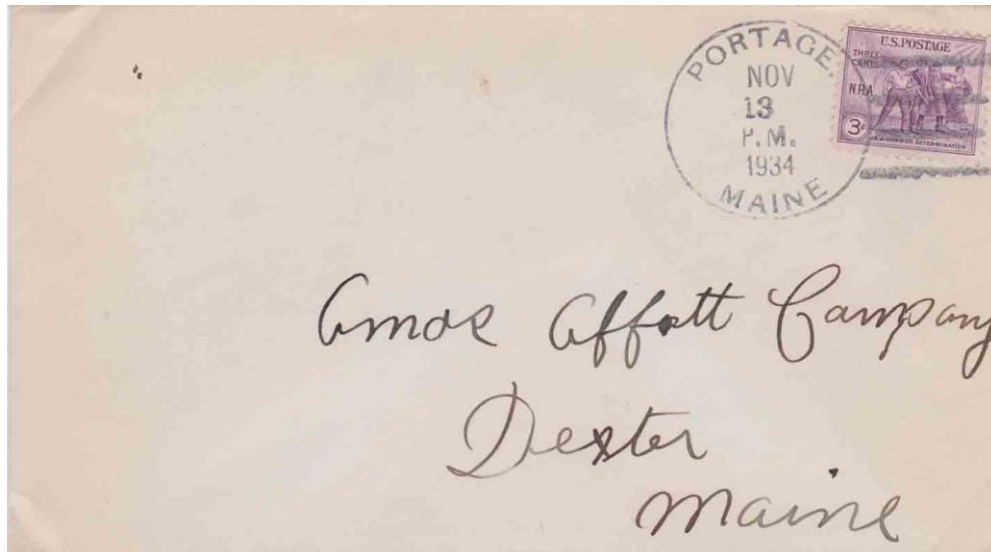
William B. McConnell became the Acting Postmaster for the Portage Post Office.

3 April 1928:

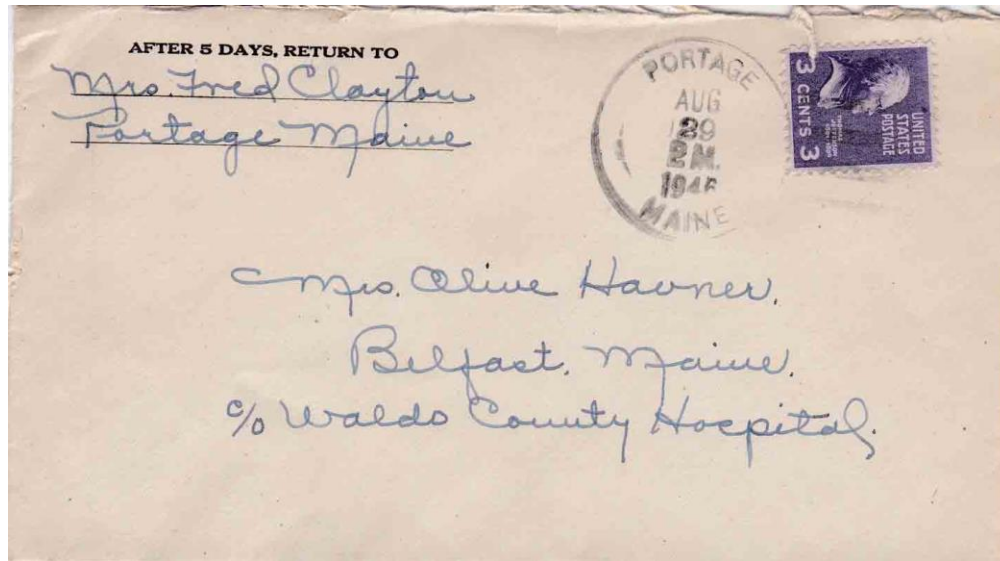
Phoebe Stevens



Date Unknown: Portage Post Office



13 November 1913: The circular postmark is 33.5 mm in diameter with a four-bar (B) killer.



29 August 1946:

The circular postmark is 33 mm in diameter with a four-bar (B) killer.

30 December 1963:

Barbara J. Paradis became the Acting Postmaster for the Portage Post Office.

25 May 1965:

Robert L. Sutherland

3 August 1984:

Pearle L. Soucy became the Acting Postmaster for the Portage Post Office.

29 September 1984:

Pearle L. Soucy

28 February 1986:

Henry G. Obar became the Acting Postmaster for the Portage Post Office.

6 June 1986:

Anita Theriault became the Acting Postmaster for the Portage Post Office.

19 July 1986:

Vernon D. Boyce

16 April 2005:

Anita Theriault

27 January 2011:

Terri Lovewell became the Acting Postmaster for the Portage Post Office.

8 November 2011:

Christine Murphy became the Acting Postmaster for the Portage Post Office.

14 June 2012:

Leisa Henderson became the Acting Postmaster for the Portage Post Office.

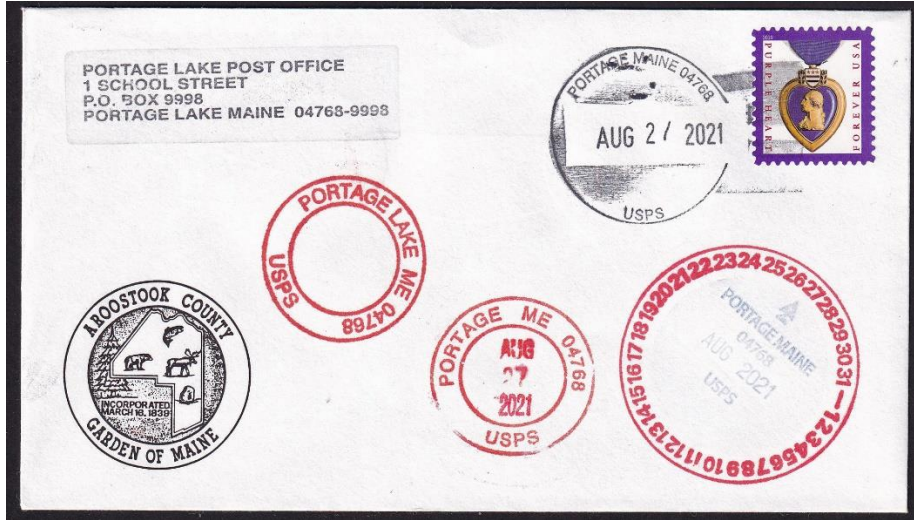
27 July 2013:

Portage Post Office was converted to a Remotely Managed Post Office under the direction of the Postmaster of the Ashland Post Office.



August 2020:

Portage Post Office. Photo credit Jim Husson



27 August 2021:
The circular postmark is 32 mm in diameter with a four-bar (G2/ib).

31 January 2024:

Portage post office is still in operation, located at 1 School Street, Portage, ME 04768, GPS 46° 45' 33" N 68° 28' 31" W.

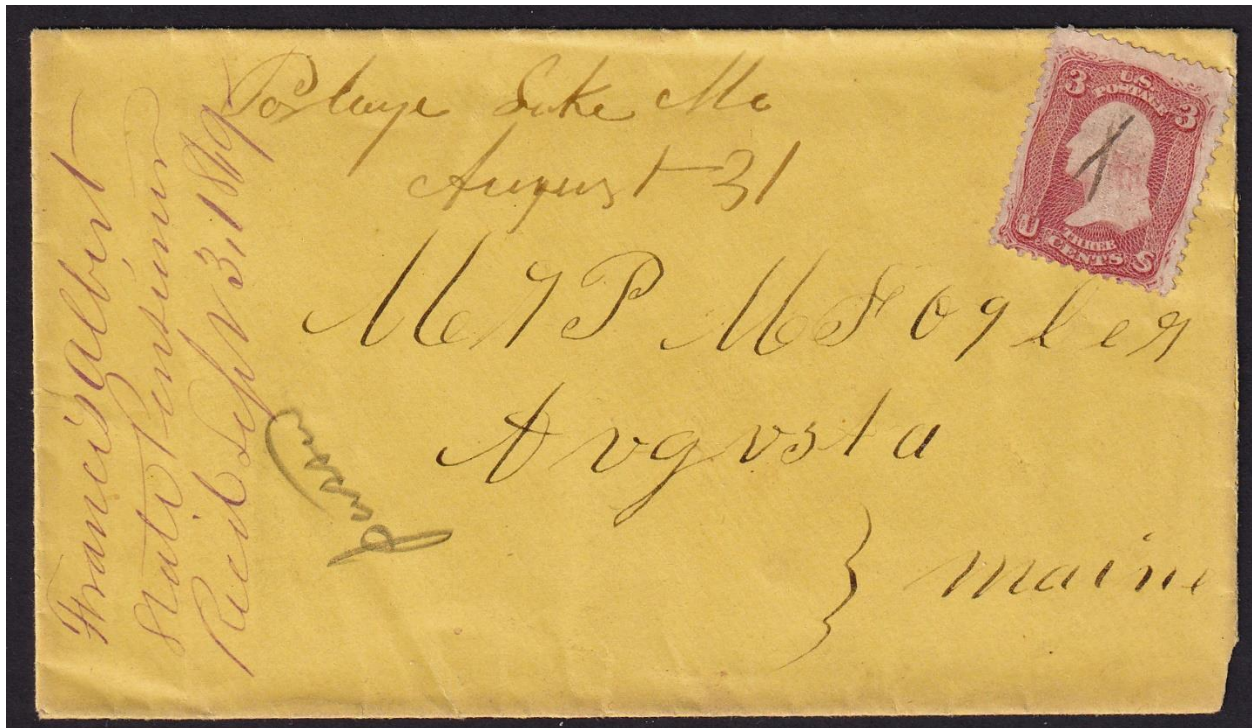
Portage Lake

21 February 1867:

Portage Lake post office opened.

27 February 1867:

Newcomb W. Stearns appointed Postmaster.



31 August 1869:
Manuscript postmark and killer.

17 February 1871:

Portage Lake post office is closed.

Credits:

This document is based on the original web page compiled by the V. F. Thomas Co. (2021), with revisions and additions by James Husson and Brian Damien (2024).

Thank you for the contributions to this page by The Strout Family, Jim Husson, and Max Lynds.

Thank you to the Waterville Stamp Club (<https://thewatervillestampclub.com>) for helping ensure this project's continuity.

Sources:

The Post Offices of Maine 2022, Maine Philatelic Society:
<http://www.mainephilatelic.org/books/TPOOM>

T11R6, Portage Lake (T13R6), Nashville (T12R6) & Sheriden (T12R5) Plantations [map] from the 1877 Atlas of Aroostook County, Maine:
https://digitalmaine.com/atlas_aroostook_1877/36/

National Archives Catalog, Postmaster Appointments for Aroostook County, Maine
<https://catalog.archives.gov/id/78746425>

Additional material, including links to official records of postmaster appointments, can be found at Research Resources for Maine Postal History:
<http://www.mainephilatelic.org/books/post-office-sources.pdf>.