

Sabattus Postal History

Androscoggin County, Maine

Last update for this page: 26 March 2023

This page is part of the Maine Postal History website—a project of the Waterville Stamp Club. For more information, see <https://www.thewatervillestampclub.com/mph>.

The Town of Webster – now known as the Town of Sabattus – was first incorporated on 7 March 1840, from land carved out of the Town of Lisbon. During the 19th century, it swapped land with Lisbon and Lewiston and annexed land from Wales and Greene. Originally in Lincoln County, it became part of the newly formed Androscoggin County on 31 March 1854. The Town officially changed its name to Sabattus on 13 May 1971.

The postal history of the town is particularly complicated, because the crossroads area now known as Webster Corners was, in the early 1800s, called Lisbon Four Corners, then Lisbon, and then Lisbon Centre. In more recent times, the names Lisbon and Lisbon Centre/Center have referred to places a few miles south of where the names were used in the past.

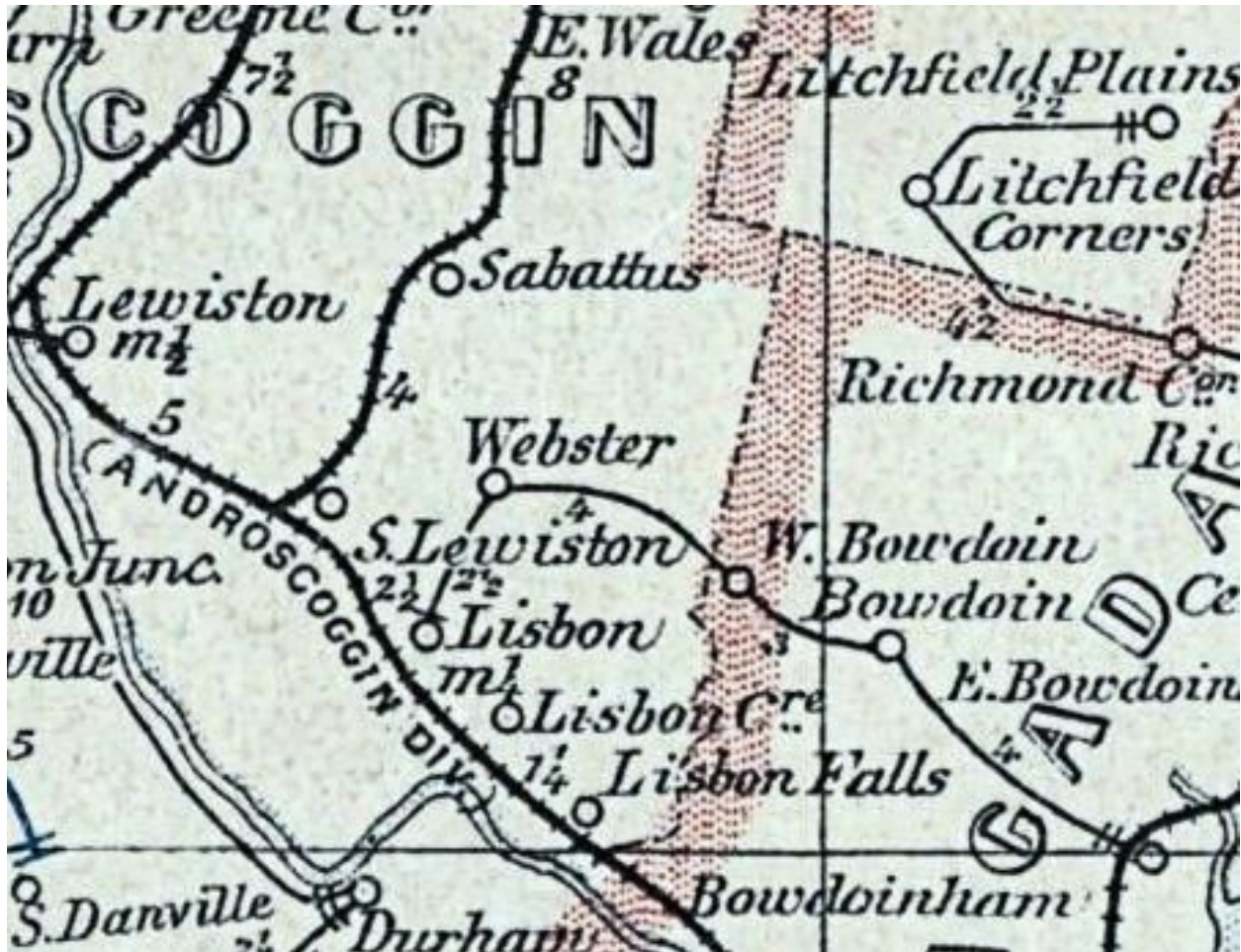
Researchers looking for records for the various post offices in Sabattus before 18 March 1854 should know that the information for that time frame may also be found under Lincoln County, not Androscoggin.

During the history of the town of Sabattus, there have been two post offices.

Briefly, the history of these two is as follows:

1. **Lisbon Four Corners** Post Office opened on 6 February 1819 and was renamed **Lisbon (1)** Post Office (in Lisbon) on 8 August 1832. Lisbon (1) Post Office was renamed on 6 December 1834 to **Lisbon Centre (1)** Post Office. This was renamed on 20 June 1841 as **Webster** Post Office, which closed on 15 February 1905.
2. **Sabattus** post office was established on 21 December 1831 and is still operating.

In 1891, both post offices in Sabattus were in operation.



Extract from the 1891 Post Route Map of Maine. Map reproduction courtesy of Norman B. Leventhal Map & Education Center at the Boston Public Library. <https://collections.leventhalmap.org/search/commonwealth:cj82kj790>

Postmarks that collectors have provided from the town of Sabattus have been included and are highlighted in Blue.

Lisbon (1)

Lisbon Centre (1)

Lisbon Four Corners

Sabattus

Webster

Lisbon (1)

8 August 1832:

Lisbon (1) Post Office is created by changing the name of Lisbon Four Corners. (Note: There was another post office named Lisbon in the area at a different time and location. The (1) is just a notation. It does not appear in the postmarks and is only used by postal historians and collectors to differentiate between the different post offices.)

7 July 1832:

Nathan C. Fletcher became Postmaster for Lisbon Four Corners and remains as Postmaster as the Post Office name changed to Lisbon (1)

29 March 1833:

Amos Dwinel became Postmaster for Lisbon (1) Post Office.

6 December 1834:

Lisbon (1) Post Office is renamed Lisbon Centre (1).

Note: Lisbon (1) Post Office was located in what is now Sabattus, formerly Webster, before 1971 and Lisbon before 1840.

Lisbon Centre (1)

6 December 1834:

Formerly Lisbon (1) Post Office, the name was changed to Lisbon Centre. (Note: There was another post office in the area named Lisbon Centre at a different time and location. The (1) is just a notation. It does not appear in the postmarks and is only used by postal historians and collectors to differentiate between the different post offices.)

29 March 1833:

Amos Dwinel became Postmaster for Lisbon (1) Post Office and remained as Postmaster as Lisbon (1) Post Office name changed to Lisbon Centre (1).

29 March 1839:

Philip M. Garcelon became Postmaster for Lisbon Centre (1).

22 June 1841 Lisbon Centre (1) becomes Webster Post Office. Note: The town was Webster before 1971 and is now Sabattus. It was Lisbon before 1840.

Lisbon Four Corners

6 February 1819:

Lisbon Four Corners Post Office opens.

6 February 1819:

James Small became Postmaster for Lisbon Four Corners Post Office.

14 February 1823:

Samuel Heath became Postmaster for Lisbon Four Corners Post Office.

7 July 1832:

Nathan C. Fletcher became Postmaster for Lisbon Four Corners Post Office.

8 August 1832:

Lisbon Four Corners Post Office's name was changed to Lisbon (1)

Sabattus

21 December 1831:

Sabatus Post Office opened in Lincoln County. (Note: the spelling of Sabatus with one t)

21 December 1831:

James Weymouth became the Postmaster of Sabatus Post Office.

21 February 1842:

John L. Cutter became the Postmaster of Sabatus Post Office.

22 June 1844:

Jacob Hill became the Postmaster of Sabatus Post Office.

11 April 1849:

Daniel Cary became the Postmaster of Sabatus Post Office.

16 June 1853:

Retiah D. Jones became the Postmaster of Sabatus Post Office.

31 March 1854:

Sabatus Post Office became part of the newly formed Androscoggin County.

1856:

Sabatus Post Office is renamed Sabattus Post Office.

9 November 1857:

Stetson L. Hill became the Postmaster of Sabattus Post Office.

11 April 1860:

Bradford D. Farnham became the Postmaster of Sabattus Post Office.

17 April 1871:

Isaac N. Davis became the Postmaster of Sabattus Post Office.

15 September 1876:

Cyprian C. Crockett became the Postmaster of Sabattus Post Office.

27 March 1879:

Seth H. Wilkins became the Postmaster of Sabattus Post Office.

25 September 1885:

Benjamin F. Dennison became the Postmaster of Sabattus Post Office.

13 November 1889:

Edwin Woodside became the Postmaster of Sabattus Post Office.

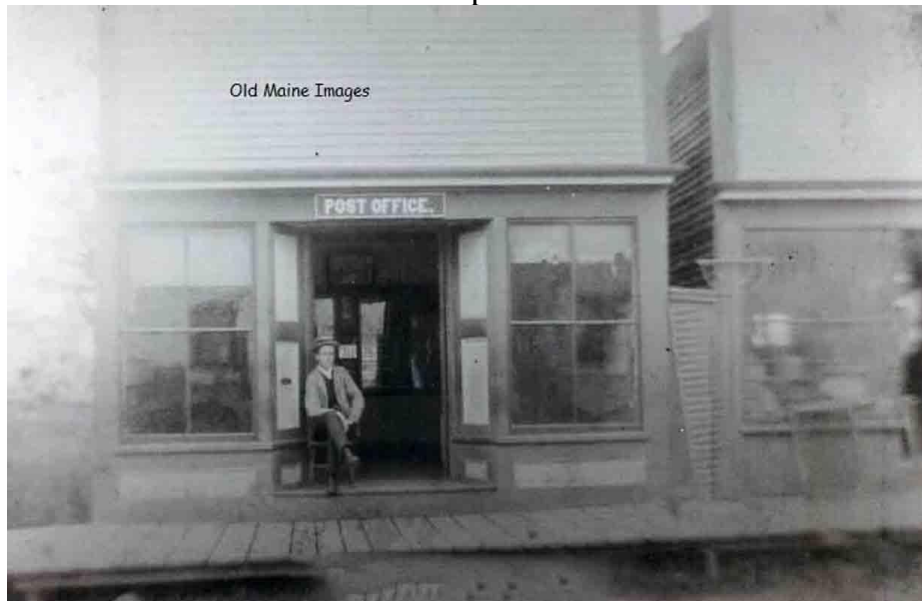
1 November 1893:

Patrick J. Sweeney became the Postmaster of Sabattus Post Office.

6 October 1897:

Edwin Woodside became the Postmaster of Sabattus Post Office.

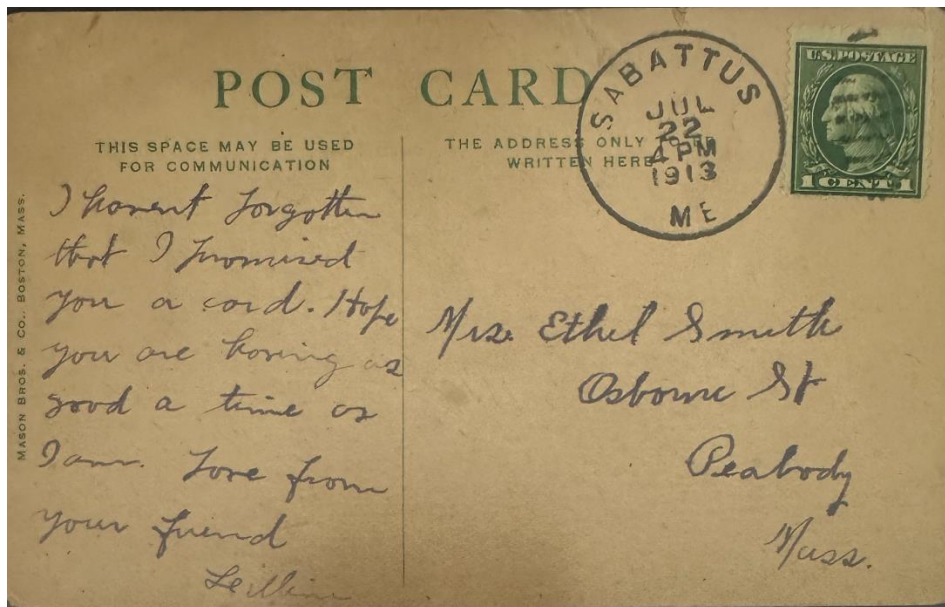
Date?:
Sabattus post office.



Date Unknown
Sabattus Post Office
(click on the image to enlarge)



4 June 1902:
The circular postmark is 28–29 mm in diameter with a cork killer.
(Click on the image to enlarge)



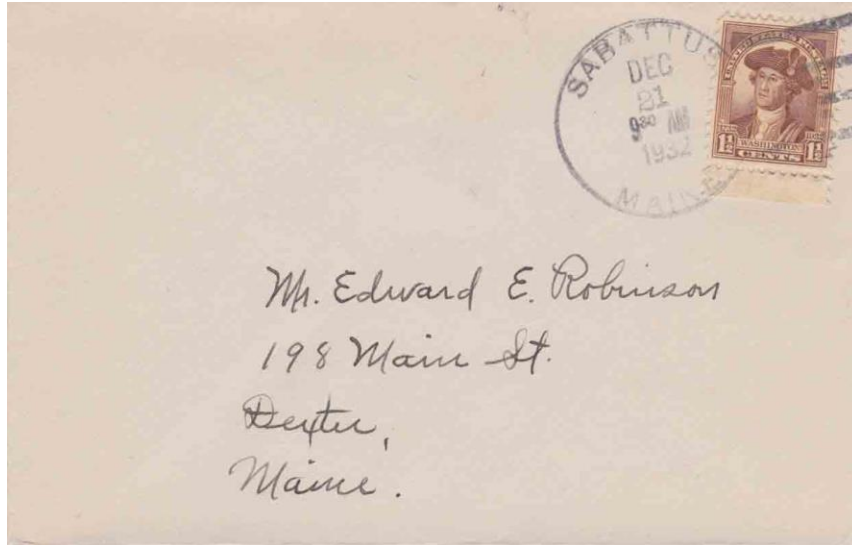
22 July 1913:
The circular postmark is 30.5 mm in diameter with an elliptical duplex killer.

5 December 1914:

William F. Huon became the Postmaster of Sabattus Post Office.

13 April 1926:

Thomas H. Phelan became the Postmaster of Sabattus Post Office.



21 December 1932:

The circular postmark is 32–33 mm in diameter with a four b-bar (B) killer. Other similar postmarks and killers dated 26 January 1925 and 8 March 1933 are known.
(Click on the image to enlarge)

25 April 1934:

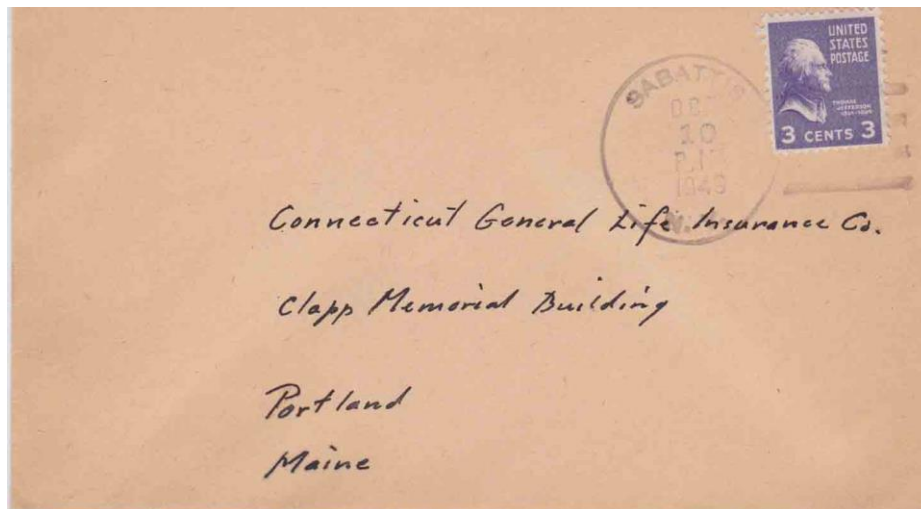
Mary C. Thorpe became the Postmaster of Sabattus Post Office.

30 September 1944:

Marie C. Vachon became the Acting Postmaster of Sabattus Post Office.

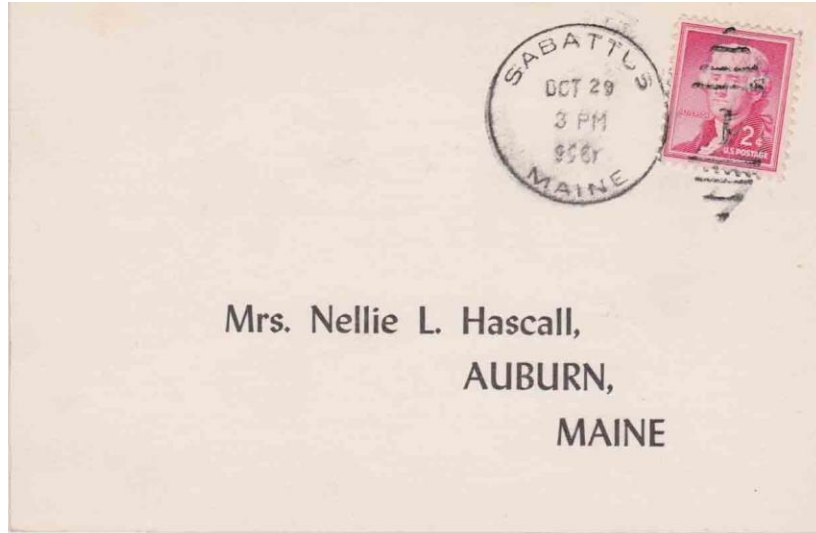
30 November 1945:

Marie C. Vachon became the Postmaster of Sabattus Post Office.



10 October 1949:

The circular postmark is 33–34 mm in diameter with a four-bar killer. Note the spelling of "Sabattis."
(Click on the image to enlarge)



29 October 1956:

The circular postmark is 30 mm in diameter with an elliptical duplex/1 killer. There is another similar postmark dated 30 June 1950 known.

(Click on the image to enlarge)

14 August 1964:

Corinne E. Savage became Acting Postmaster for Sabattus Post Office.

15 September 1966:

Corinne E. Savage became Postmaster for Sabattus Post Office.

27 September 1975:

Francis J. Brougham became postmaster for Sabattus Post Office.

20 June 1976:

Margaret O. Spencer became Officer-in-Charge for Sabattus Post Office.

11 September 1976:

Donald J. Johnson became Officer-in-Charge for Sabattus Post Office.

15 September 1976:

Robert E. Handy became Officer-in-Charge for Sabattus Post Office.

29 January 1977:

Margarite O. Spencer became Postmaster for Sabattus Post Office.

30 September 1992:

Alfreda E. Richardson became Officer-in-Charge for Sabattus Post Office.

9 January 1993:

Norman E. Scott became Postmaster for Sabattus Post Office.

18 August 1999:

Patricia Belanger became Officer-in-Charge for Sabattus Post Office.

4 December 1999:

Daniel L. Casparius became Postmaster for Sabattus Post Office.

19 November 2004:

Gail Daigle became Officer-in-Charge for Sabattus Post Office.

21 April 2005:

Charles W. Ross became Officer-in-Charge for Sabattus Post Office.

24 August 2005:

Eric Parmenter became Officer-in-Charge for Sabattus Post Office.

27 February 2007:

Kathleen Walker became Officer-in-Charge for Sabattus Post Office.

30 May 2007:

Brenda Uhle became Officer-in-Charge for Sabattus Post Office.

4 June 2008:

Louise Cote became Officer-in-Charge for Sabattus Post Office.

28 October 2008:

Diane Belanger became Officer-in-Charge for Sabattus Post Office.

21 July 2009:

Mitchell Curtis became Officer-in-Charge for Sabattus Post Office.

3 November 2010:

Ralph Paquette became Officer-in-Charge for Sabattus Post Office.

22 June 2011:

Donald B. Mendell III became Officer-in-Charge for Sabattus Post Office.

19 November 2011:

Donald B. Mendell III became Postmaster for Sabattus Post Office.

17 February 2018:

Coralee S. Hood became Postmaster for Sabattus Post Office.

2023:

Sabattus Post Office is still in operation.

Webster

22 June 1841:

Formerly Lisbon Centre (1), the name was changed to Webster Post Office in Lincoln County. The town was Webster until 1971, when it became Sabattus.

29 March 1839:

Philip M. Garcelon became Postmaster for Lisbon Centre (1) and remained as Postmaster when the post office name was changed to Webster Post Office.

3 July 1851:

Samuel Cushman became Postmaster for Webster Post Office.

31 March 1854:

Webster Post Office becomes part of the newly formed Androscoggin County.

28 December 1869:

Albert J. Larrabee became Postmaster for Webster Post Office.

24 February 1880:

George B. Smith became Postmaster for Webster Post Office.

2 April 1880:

Frederick Blethen became Postmaster for Webster Post Office.

15 December 1884:

George B. Smith became Postmaster for Webster Post Office.

6 September 1887:

Charles K. Donnell became Postmaster for Webster Post Office.

15 July 1889:

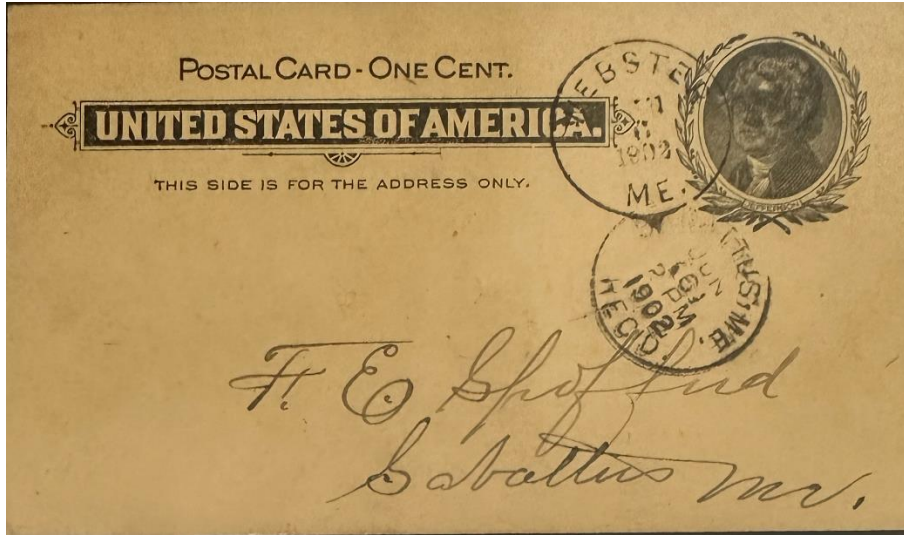
Charles A. Owen became Postmaster for Webster Post Office.

5 August 1893:

Herbert L. Kilgore became Postmaster for Webster Post Office.

5 April 1894:

John L. Jones became Postmaster for Webster Post Office.



6 June 1902:

The circular postmark is 27.5 mm in diameter with a four-circle target killer. A similar postmark dated 16 January 1900 is known.

15 February 1905:

Webster Post Office closed.

What does it mean when there is a (1) or (2) after the name of a post office?

Sometimes the numbers (1) and (2) appear after the name of a post office. These numbers indicate the (first) and (second) localities of post offices of the same name. For example, if the post office name is used for two separate post offices in two respective villages at different times, they will be identified in this manner. These numbers do not necessarily indicate a time period.

These numbers do not represent numbered stations. Some larger places, like Auburn, have postal stations with numbers. These differ from the post offices we call Auburn (1), Auburn (2), etc.

Also: the numbers do not appear in postmarks or official post office publications. However, they are used by postal historians and collectors to refer to different post offices, as noted above.

Credits:

This document is based on the original Sabattus Postal History web page compiled by the V. F. Thomas Co. (2021), with revisions and additions by James Husson and Brian Damien (2023).

Thank you for the contributions to this page by Kelvin Kindahl, James Husson, and the Strout family collection.

And thank you to the Waterville Stamp Club <https://thewatervillestampclub.com> for hosting this project.

Sources:

The Post Offices of Maine 2022, Maine Philatelic Society:

<http://www.mainephilatelic.org/books/TPOOM>

Webster [map] and Sabattusville [map] from the 1873 Atlas and History of Androscoggin County, Maine:

https://digitalmaine.com/atlas_androscoggin_1873/41/ and

https://digitalmaine.com/atlas_androscoggin_1873/40/

Additional material, including links to official records of postmaster appointments, can be found at Sources for Researching Maine Post Offices, Postmasters, and Postal History: <http://www.mainephilatelic.org/books/post-office-sources.pdf>.