

T13 R15 WELS Postal History

Aroostook County, Maine

Last update for this page: 25 June 2024

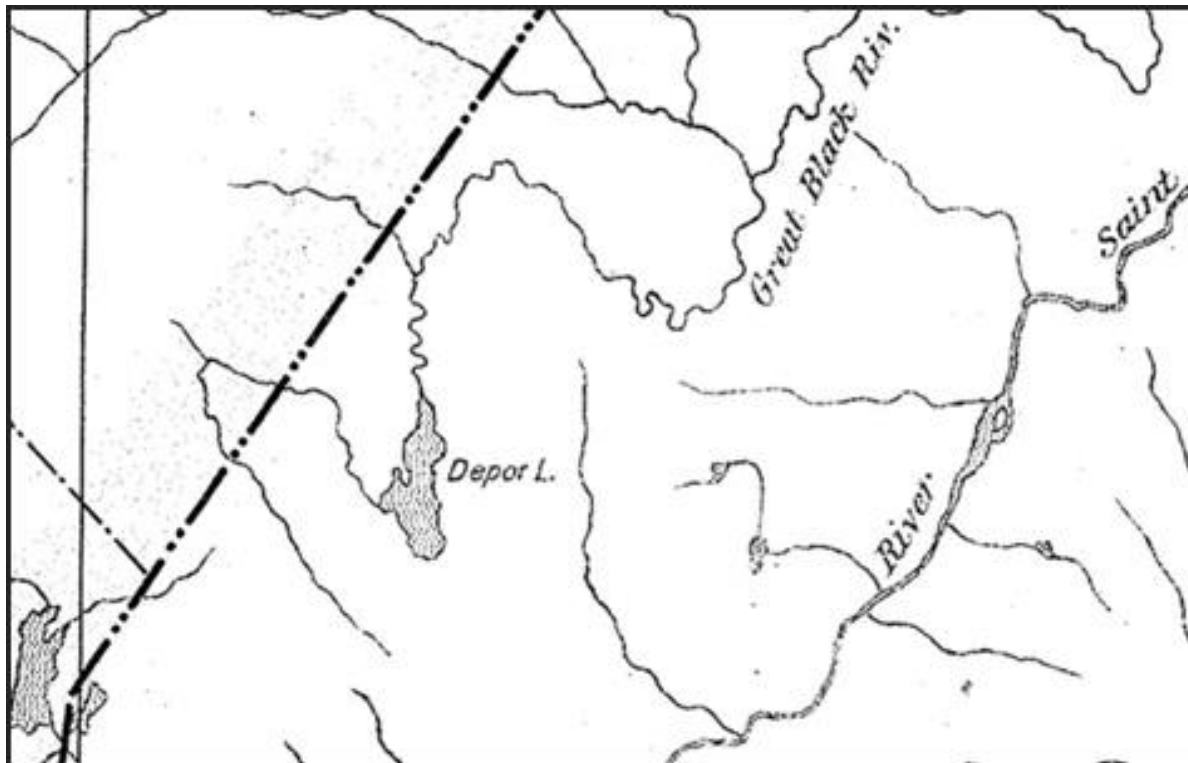
This page is part of the Maine Postal History website—a project of the Maine Philatelic Society.
For more information, see <http://www.mainephilatelic.org/mph>

During the history of T13 R15 WELS, there has been only one post office.

Briefly, the history of this one is as follows:

1. Seven Islands Post Office opened on 31 March 1908, was rescinded on 29 April 1908. It re-opened on 16 December 1919 per Postmaster, 22 January 1920 per PB 12164. On 1 October 1927 it moved to Clayton Lake in T11 R14, per PB 14418; it was not renamed Clayton Lake until 15 May 1930.

In 1914, there was no post office in T13 R15 WELS. (source: Post Route Map of the State of Maine 1914 <http://www.mainephilatelic.org/PostRouteMaps/MainePostRouteMap1914.pdf>.)



Seven Islands

31 March 1908:

Seven Islands Post Office opened.

29 April 1908:

Seven Islands post office rescinded.

1919 December 16, per Postmaster Appointment records; 22 January 1920, per Postal Bulletin 12164:

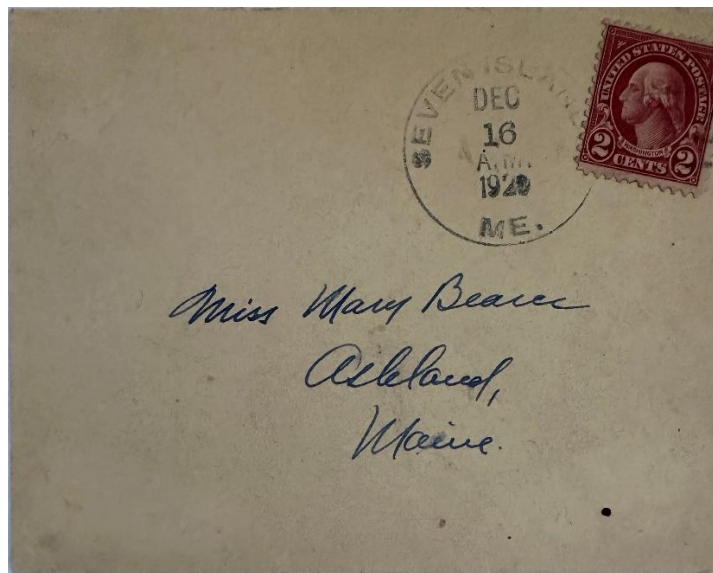
Seven Islands post office re-opened.

1919 December 16 per Postmaster Appointment records; 22 January 1920 per Postal Bulletin 12164:

Albert M. Currier became the Postmaster of the Seven Islands Post Office.

10 January 1924:

Louise McGillicuddy became the Postmaster of the Seven Islands Post Office.

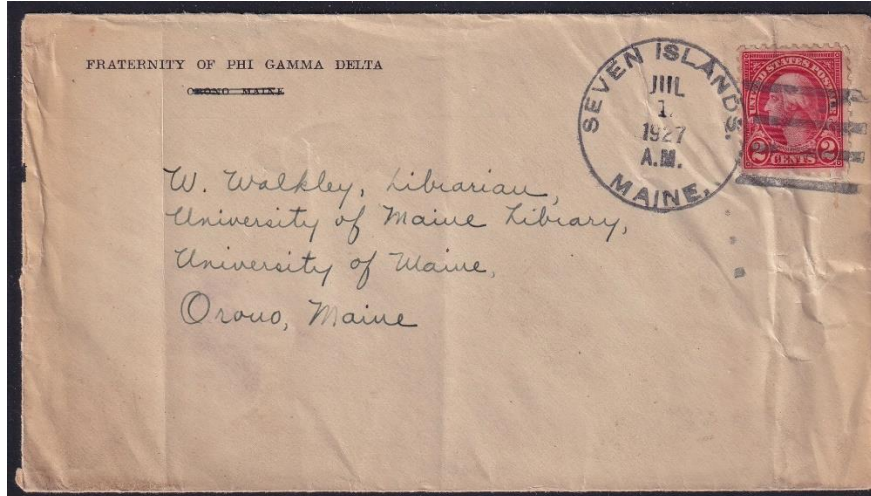


16 December 1925:

The circular postmark is 32 mm in diameter with a four-bar (B) killer.

8 July 1926:

George R. Burnham became the Postmaster of the Seven Islands Post Office.



1 July 1927:

The circular postmark is 33 mm in diameter with a four-bar (B) killer.

1 October 1927:

The Seven Island Post Office moved to Clayton Lake in T11 R14 WELS.

16 May 1930:

Seven Islands Post Office was renamed as Clayton Lake.

Credits:

This document is based on the original web page compiled by the V. F. Thomas Co. (2021), with revisions and additions by James Husson and Brian Damien (2024).

Thank you for the contributions to this page by Jim Husson and Max Lynds.

Thank you to the Waterville Stamp Club (<https://thewatervillestampclub.com>) for helping ensure this project's continuity.

Sources:

The Post Offices of Maine 2022, Maine Philatelic Society:

<http://www.mainephilatelic.org/books/TPOOM>

National Archives Catalog: Postmaster Appointments for Aroostook County, Maine

<https://catalog.archives.gov/id/78746425>

USGS Topographic Map, Seven Islands, Maine 1955 reveals not much left -- only seven buildings -- of the 1920s logging camp that hosted the Seven Islands Post Office.

https://ngmdb.usgs.gov/ht-bin/tv_browse.pl?id=be8edefbb1dc206720669e5bb6a0c0c

Sanders, Christine, The 4-Bar Postmark of the USPS, PMCC Bulletin Reprinted Article, Original Publication Date: June, July & December 2012.

http://www.postmarks.org/resources/PMCC_FourBarCancelsUSPS.pdf

More background information on this post office can be found on our web page for Clayton Lake, <http://www.mainephilatelic.org/mph/ClaytonLake.pdf>.

Additional material, including links to official records of postmaster appointments, can be found at Sources for Researching Maine Post Offices, Postmasters, and Postal History:

<http://www.mainephilatelic.org/books/post-office-sources.pdf>.