

Sinclair Township Postal History

Aroostook County, Maine

Last update for this page: 15 June 2024

This page is part of the Maine Postal History website—a project of the Maine Philatelic Society.
For more information, see <http://www.mainephilatelic.org/mph>

Sinclair Township, also known as Township 17, Range 4, is a never-incorporated township in the Unorganized Territories of Aroostook County.

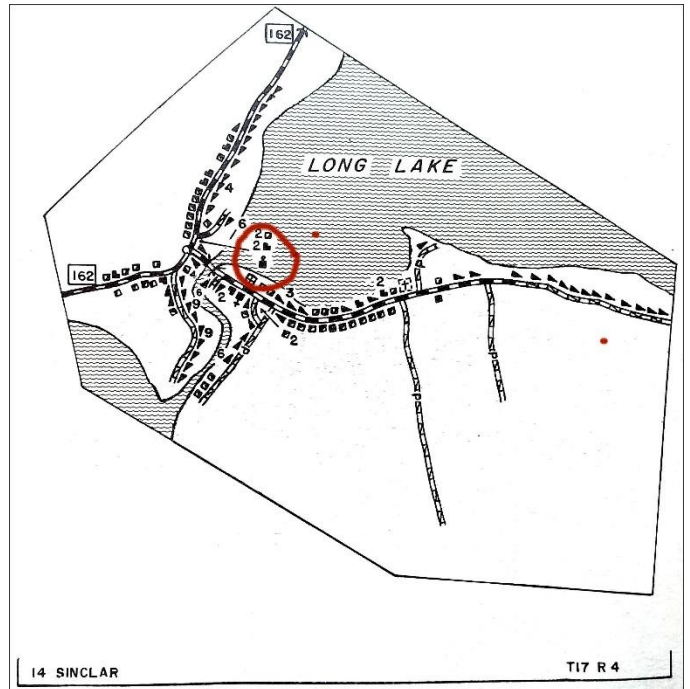
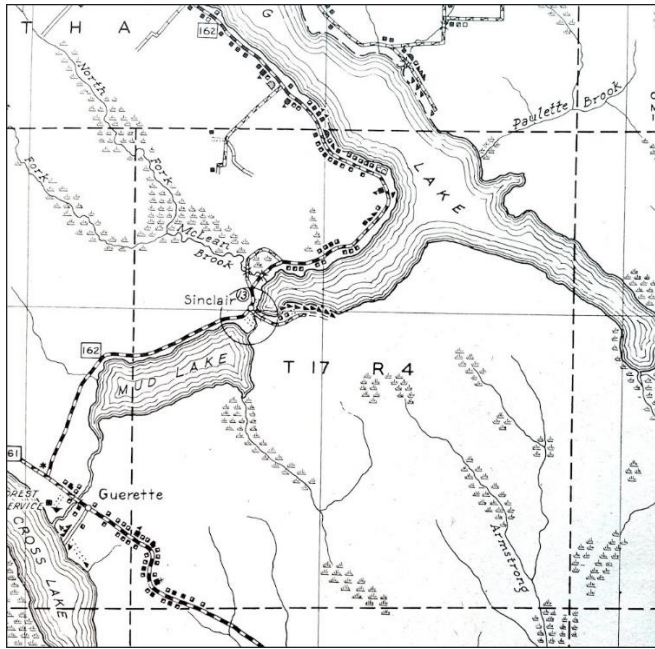
During the history of Sinclair, there has been only one post office.

In 1914, the Sinclair post office appears down the lake from St. Agatha. (source: Post Route Map of the State of Maine 1914.

<http://www.mainephilatelic.org/PostRouteMaps/MainePostRouteMap1914.pdf>)



Note: Normally we try to provide a link to digital versions of county atlas maps, usually from the 1800s, as an aid to understanding the locations for the post offices in a town. However, maps depicting the Sinclair area from the 1877 Atlas of Aroostook County show no useful detail. As an alternative, we are presenting on the next page, images from maps in the 1971 *General Highway Atlas of Maine*, published by the State Highway Commission. , predecessor to the Maine Department of Transportation. Note that on the inset map of the village of Sinclair, on the right, the map shows the location of the post office with the symbol circled in red.



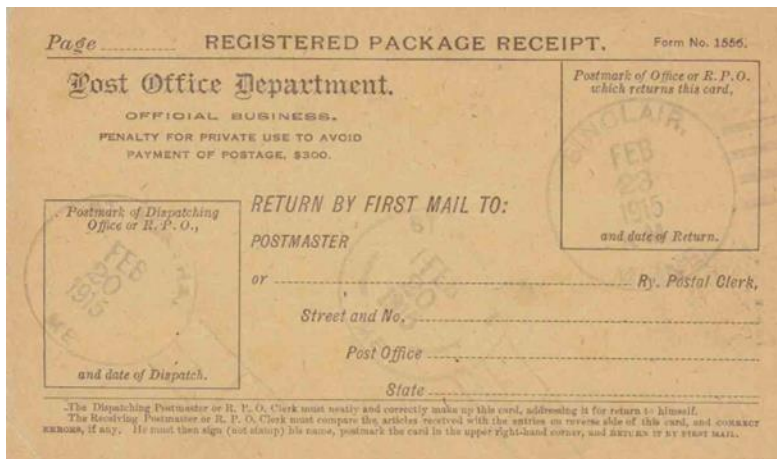
Sinclair

4 September 1907:

Sinclair post office opened.

4 September 1907:

Alice Daigle became the Postmaster of the Sinclair Post Office.



23 February 1915:

The circular postmark is 31.5 mm in diameter with a four-bar (B) killer.

30 November 1917:

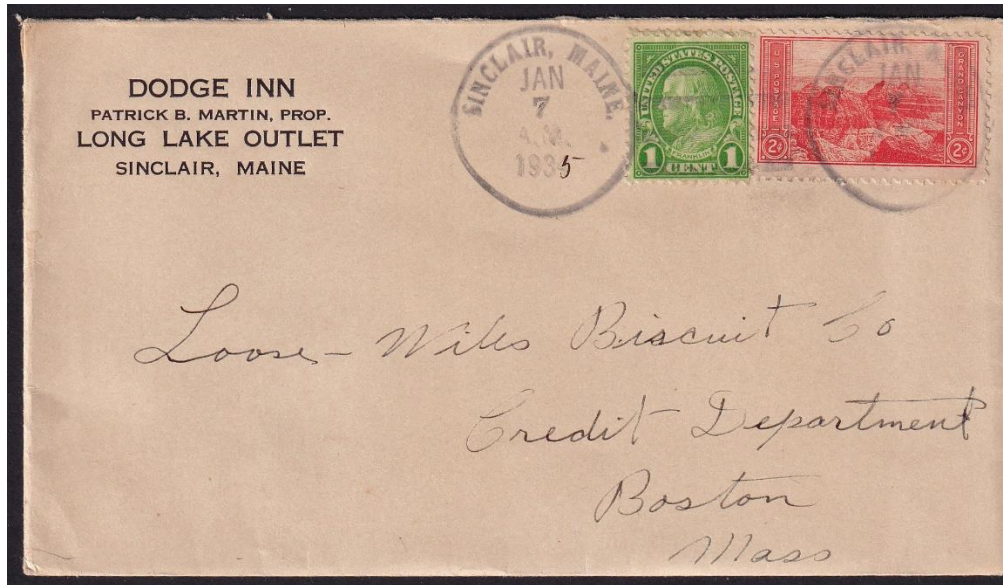
Jane Ouelette became the Postmaster of the Sinclair Post Office.

22 April 1929:

Alex E. Ouelette became the Acting Postmaster of the Sinclair Post Office.

12 June 1929:

Mrs. Lucy Ouelette became the Postmaster of the Sinclair Post Office.

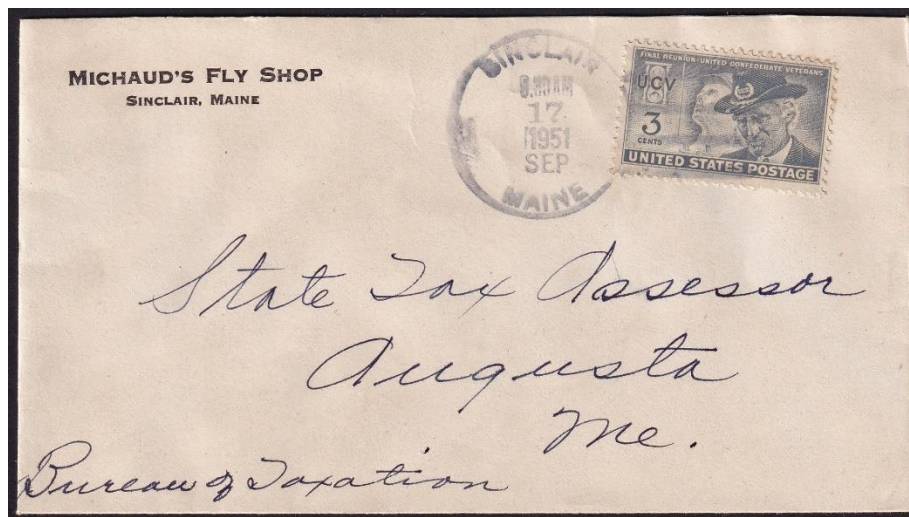


7 January 1935:

The misshapen circular postmark is 31 mm in diameter with a probable four-bar type (E) killer.

24 September 1937:

Mrs. Annie Martin became the Postmaster of the Sinclair Post Office.



17 September 1951:

The circular postmark is 34 mm in diameter with a four-bar (F/1) killer.

31 October 1952:

Mrs. Nora S. Michaud became the Acting Postmaster of the Sinclair Post Office.

21 January 1954:

Rene Lizotte became the Officer-In-Charge of the Sinclair Post Office.

2 May 1982:

Jeanette R. Albert became the Officer-In-Charge of the Sinclair Post Office.

28 May 1983:

Jeanette R. Albert became the Postmaster of the Sinclair Post Office.

29 June 2001:

April Thibodeau became the Officer-In-Charge of the Sinclair Post Office.

13 December 2001:

Lisa A. Nascimbeni became the Officer-In-Charge of the Sinclair Post Office.

29 December 2001:

Lisa A. Nascimbeni became the Postmaster of the Sinclair Post Office.

16 April 2005:

Gail A. Daigle became the Postmaster of the Sinclair Post Office.

3 May 2014:

Sinclair Post Office was converted to a Remotely Managed Post Office under the direction of the Postmaster of the Madawaska Post Office.



July 2023:
Sinclair Post Office. Photo Credit Dennis Dixon

2 February 2024:

The Sinclair Post Office is still operational at 251 Sinclair Road, Sinclair, ME 04779. GPS 47° 09' 58" N 68° 16' 12" W

Credits:

This document is based on the original web page compiled by the V. F. Thomas Co. (2021), with revisions and additions by James Husson and Brian Damien (2024).

Thank you for the contributions to this page by The Strout Family, Jim Husson, and Max Lynds.

Thank you to the Waterville Stamp Club (<https://thewatervillestampclub.com>) for helping ensure this project's continuity.

Sources:

The Post Offices of Maine 2022, Maine Philatelic Society:
<http://www.mainephilatelic.org/books/TPOOM>

National Archives Catalog: Postmaster Appointments Aroostook County, Maine
<https://catalog.archives.gov/id/78746425>

Additional material, including links to official records of postmaster appointments, can be found at Research Resources on Maine Postal History: <http://www.mainephilatelic.org/books/post-office-sources.pdf>.