

Smyrna Postal History

Aroostook County, Maine

Last update for this page: 22 June 2024

This page is part of the Maine Postal History website—a project of the Maine Philatelic Society.
For more information, see <http://www.mainephilatelic.org/mph>

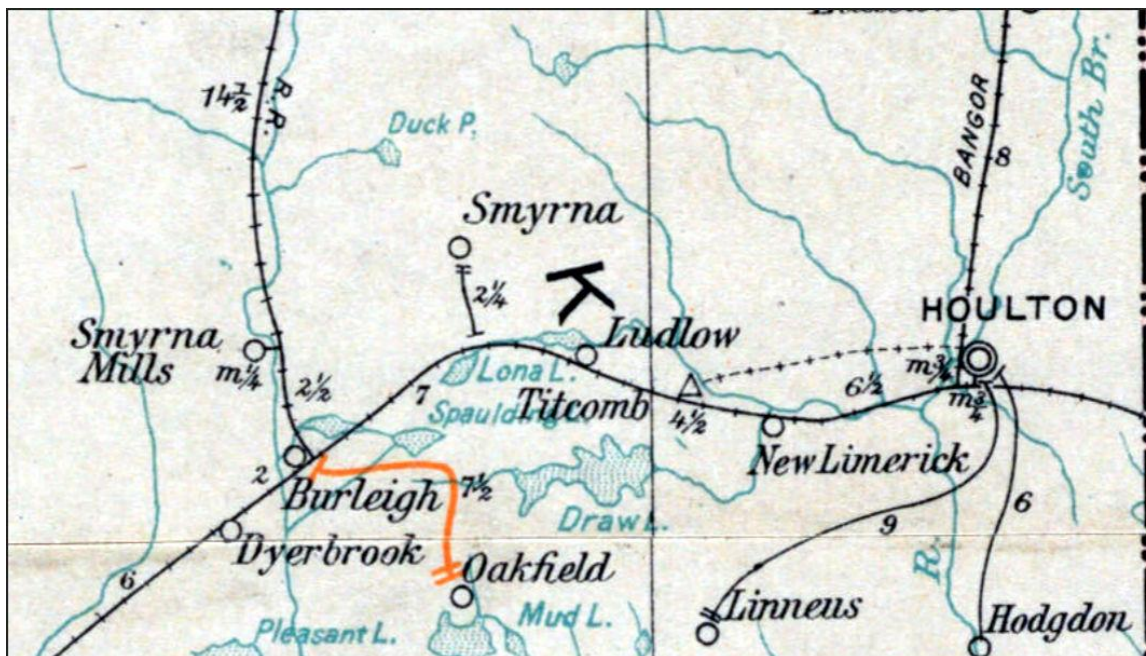
Smyrna was incorporated in 1839.

During the history of Smyrna, there have been five post offices.

Briefly, the history of these five is as follows:

1. [Dudley](#) Post Office opened on 15 February 1901 and closed on 15 June 1903.
2. [Hemore](#) Post Office opened on 16 October 1896 and closed on 6 January 1897.
3. [Hillman](#) Post Office opened on 8 February 1908 and closed on 13 July 1914.
4. [Smyrna](#) Post Office opened on 15 August 1840, closed on 31 October 1853, re-opened on 28 April 1856, and closed on 31 August 1908.
5. [Smyrna Mills](#) Post Office opened on 12 February 1858 and is still operating.

In 1903, there were two post offices in Smyrna: Smyrna, and Smyrna Mills. (Source: Post Route Map of the State of Maine, 1903. Courtesy of Normal B. Leventhal Map and Education Center, Boston Public Library. <https://collections.leventhalmap.org/search/commonwealth:cj82km77v>.)



In 1914, there were two post offices in Smyrna: Hillman and Smyrna Mills. (source: Post Route Map of the State of Maine 1914

<http://www.mainephilatelic.org/PostRouteMaps/MainePostRouteMap1914.pdf>.)



Dudley

15 February 1901:

Dudley Post Office opened.

15 February 1901:

Earnest L. Dean became the Postmaster of the Dudley Post Office.

22 May 1903 discontinued effective 15 June 1903:

Dudley Post Office closed.

Hemore

16 October 1896:

Hemore Post Office opened,

16 October 1896:

John E. Webb became the Postmaster of the Hemore Post Office.

6 January 1897:

Hemore Post Office closed-name changed to Ludlow.

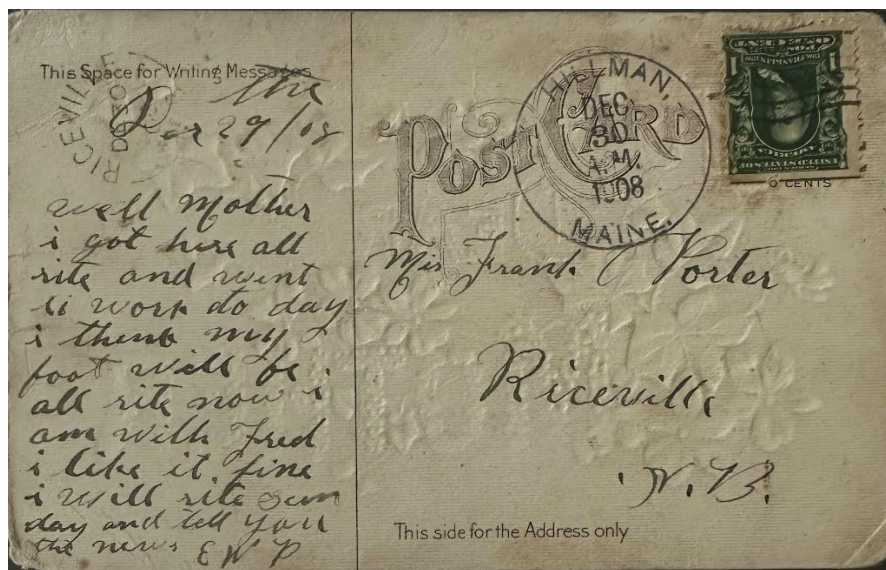
Hillman

8 February 1908:

Hillman Post Office opened.

8 February 1908:

Henry E.W. Alister became the Postmaster of the Hillman Post Office.



30 December 1908:

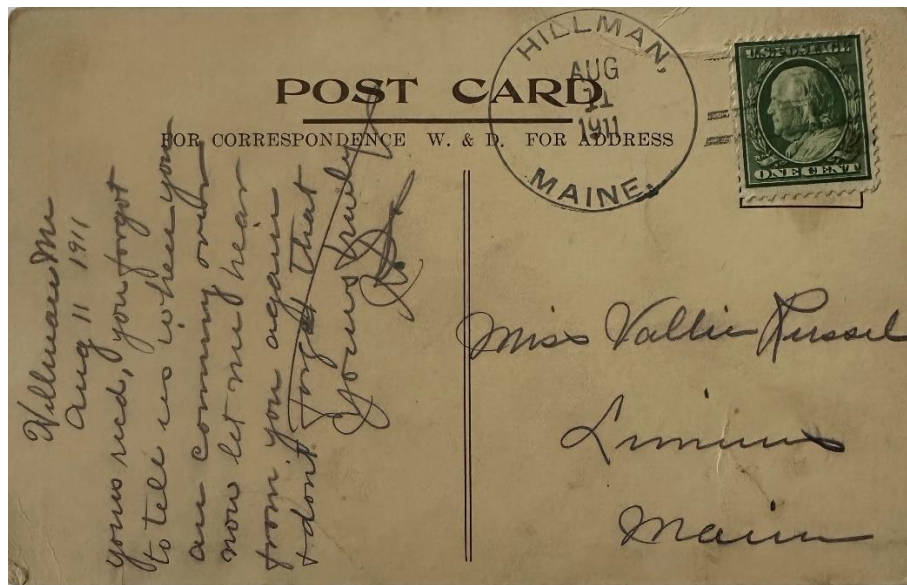
The circular postmark is 32 mm in diameter. The wavy line killers on the stamp do not match the partial straight-line killer and may represent a stamp reuse.



12 March 1909:
The circular postmark is 31 mm in diameter with a four-bar (A/1) killer.

9 June 1911:

Simeon P. Dean became the Postmaster of the Hillman Post Office.



11 August 1911:
The circular postmark is 31.5 mm in diameter (with no A.M./P.M.) with a four-bar (A/2) killer. A similar postmark and killer dated 19 November 1912 is known.

13 July 1914:

Hillman Post Office closed service from Smyrna Mills.

Smyrna

15 August 1840:

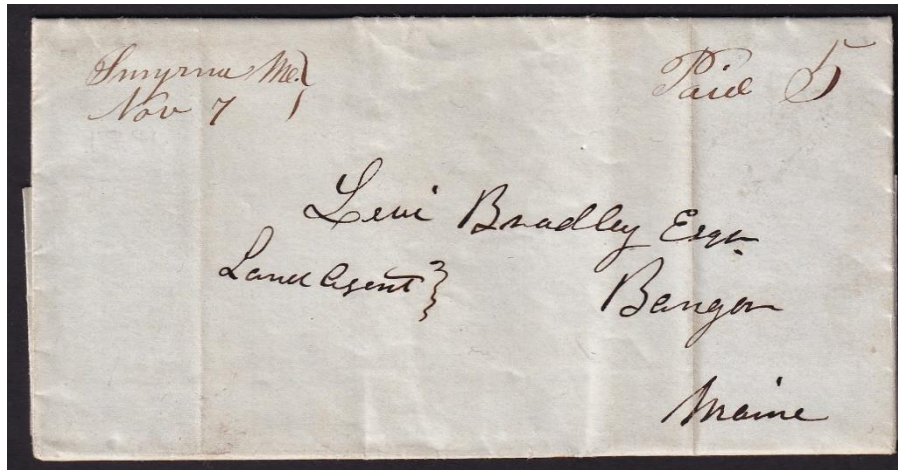
Smyrna post office opened.

15 August 1840:

Elias Blodgett became the Postmaster of the Smyrna Post Office.

10 April 1843:

Oliver H. Perry became the Postmaster of the Smyrna Post Office.



7 November 1846:
Manuscript postmark

7 February 1853:

Elias Blodgett became the Postmaster of the Smyrna Post Office.

31 October 1853:

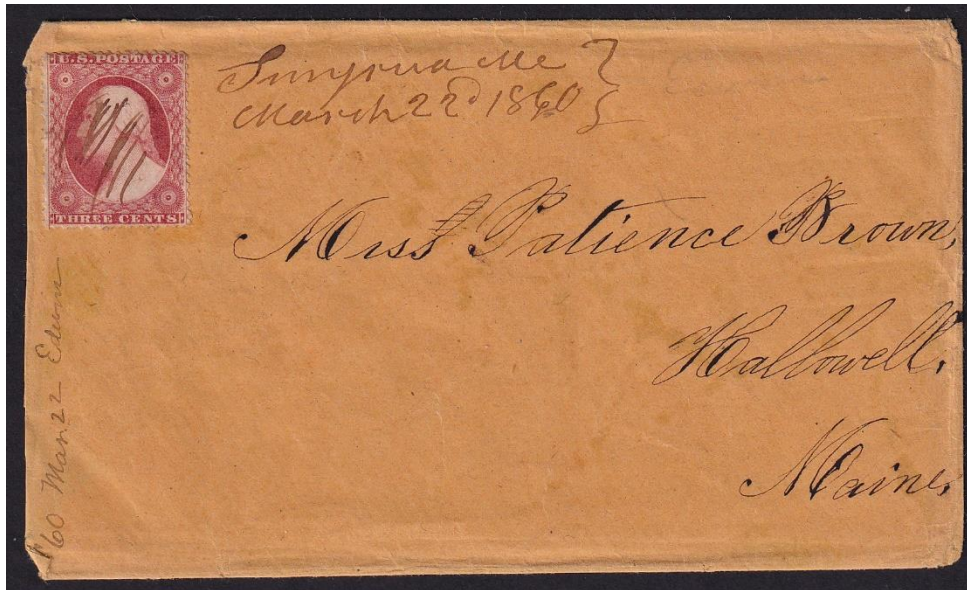
Smyrna post office closed.

28 April 1856:

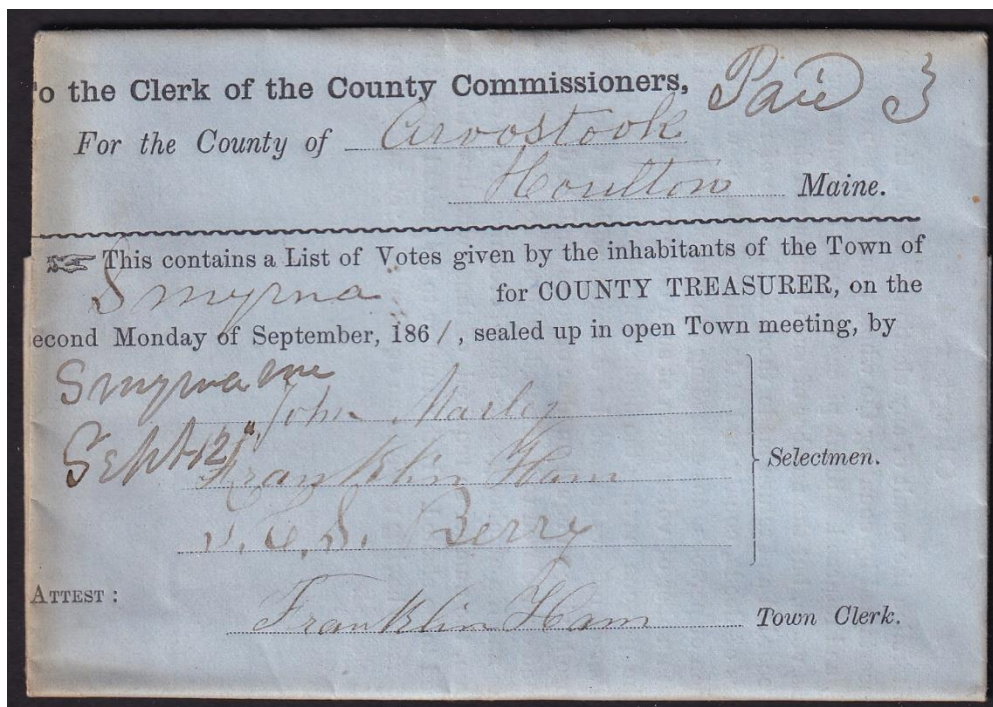
Smyrna post office re-opened.

28 April 1856:

Thaddeus C.S. Berry became the Postmaster of the Smyrna Post Office.



22 March 1860:
Manuscript postmark.



12 September 1861:
Manuscript postmark

5 October 1868:

Levi Berry became the Postmaster of the Smyrna Post Office.

1 November 1869:

Andrew Berry became the Postmaster of the Smyrna Post Office.

23 August 1889:

Mrs. Julia E. Berry became the Postmaster of the Smyrna Post Office.



6 April 1891:

The circular postmark is 27 mm in diameter with a four-circle target killer. A similar postmark and killer dated 11 October 1898 is known.

2 October 1899:

Mrs. Arabella M. Adams became the Postmaster of the Smyrna Post Office.

15 August 1908 discontinued effective 31 August 1908:

Smyrna post office closed.

Smyrna Mills

12 February 1858:

Smyrna Mills post office opened.

12 February 1858:

Osgood Pingry became the Postmaster of the Smyrna Mills Post Office.



22 November 1859:
Manuscript postmark.

13 January 1863:

Franklin Ham became the Postmaster of the Smyrna Mills Post Office.

4 February 1873:

Mrs. Mary J. Ham became the Postmaster of the Smyrna Mills Post Office.

25 May 1874:

William F. Douley became the Postmaster of the Smyrna Mills Post Office.

25 May 1877:

Moses P. Clark became the Postmaster of the Smyrna Mills Post Office.

3 December 1884:

Artemas M. Leavitt became the Postmaster of the Smyrna Mills Post Office.

24 November 1886:

Jabez Young became the Postmaster of the Smyrna Mills Post Office.

16 April 1887:

Gabella Daggett became the Postmaster of the Smyrna Mills Post Office.

13 October 1893:

Charles A. Risten became the Postmaster of the Smyrna Mills Post Office.

3 April 1895:

Fred A. Tarbell became the Postmaster of the Smyrna Mills Post Office.

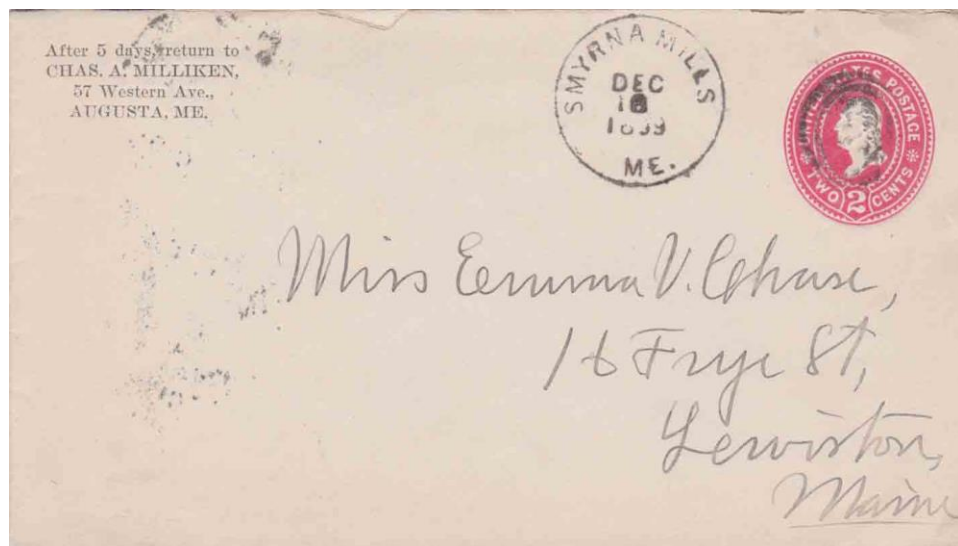


6 April 1896:

The circular postmark is 28.5 mm in diameter, with a second CDS used as a killer.

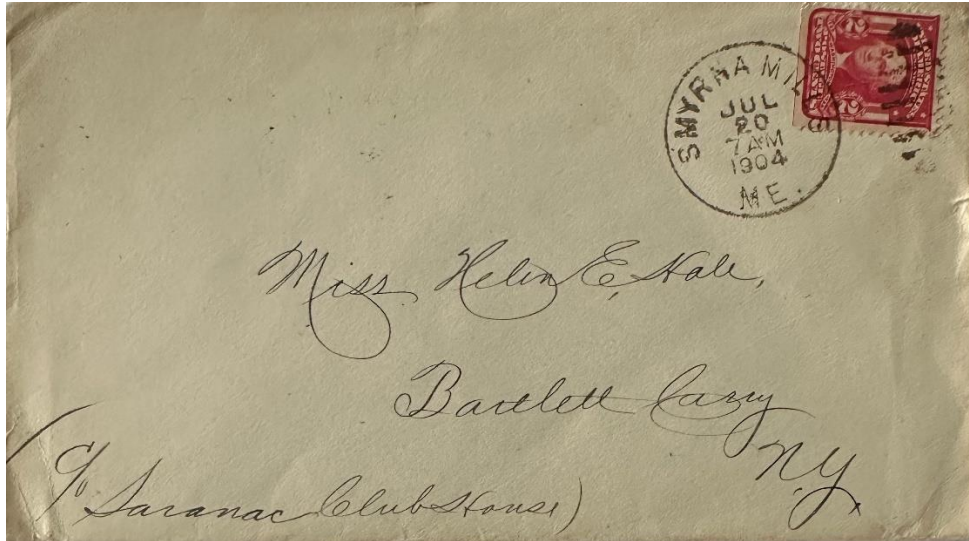
16 July 1897:

Isabell Daggett became the Postmaster of the Smyrna Mills Post Office.



6 December 1899:

The circular Postmark is 28 mm in diameter with a four-circle target killer.



20 July 1904:

The circular postmark is 29 mm in diameter with an oval nine-bar duplex killer.

29 May 1913:

Nellie O. Gardner became the Postmaster of the Smyrna Mills Post Office.



Date Unknown:
Smyrna Mills Post Office.

1 April 1921:

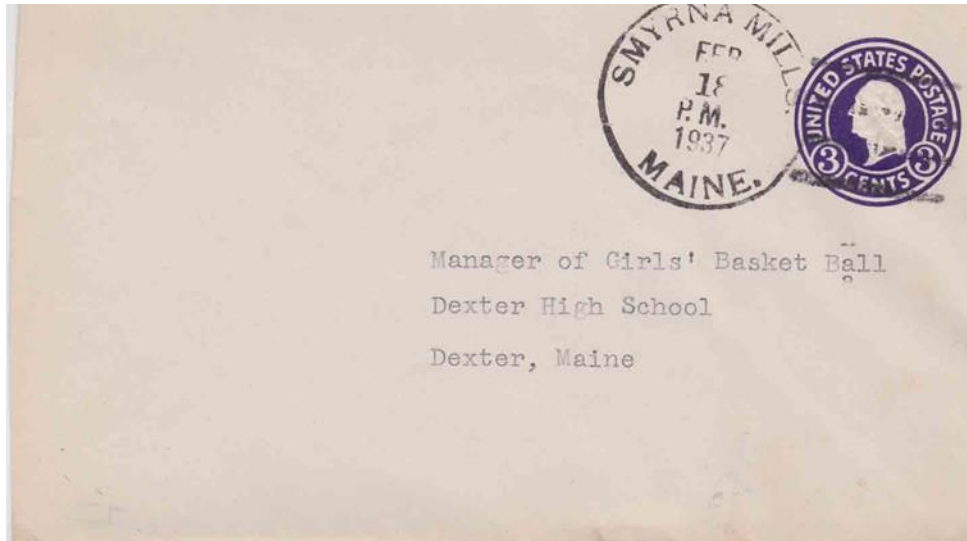
Smyrna Mills Post Office became a Presidential Post Office.

1 August 1935:

Mrs. Alice S. Fitzgerald became the Acting Postmaster of the Smyrna Mills Post Office.

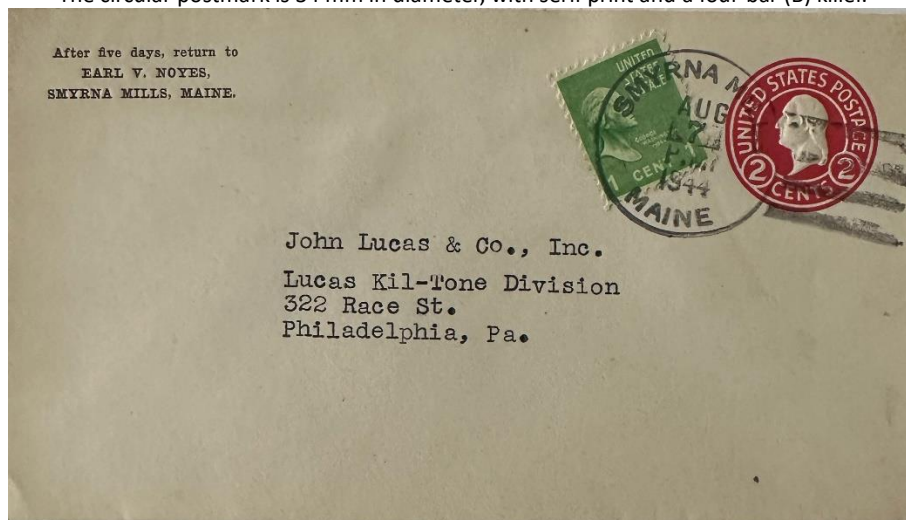
23 January 1936:

Mrs. Alice S. Fitzgerald became the Postmaster of the Smyrna Mills Post Office.



18 February 1937:

The circular postmark is 34 mm in diameter, with serif print and a four-bar (B) killer.



17 August 1944:

The circular postmark is 33 mm in diameter with a four-bar killer.

3 August 1949:

Eugene S. Fitzgerald became the Acting Postmaster of the Smyrna Mills Post Office.

20 September 1950:

Eugene S. Fitzgerald became the Postmaster of the Smyrna Mills Post Office.

13 April 1973:

Mrs. Marquerite F. Brown became the Officer-In-Charge of the Smyrna Mills Post Office.

27 April 1974:

Mrs. Marquerite F. Brown became the Postmaster of the Smyrna Mills Post Office.

8 December 1978:

Mrs. Nellie R. Prince became the Officer-In-Charge of the Smyrna Mills Post Office.

30 June 1979:

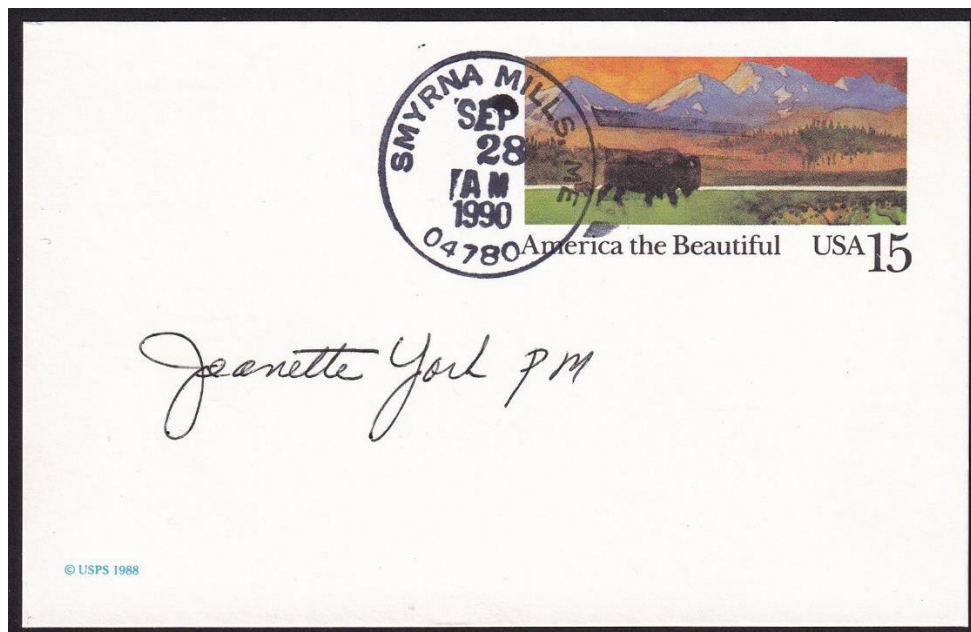
Mrs. Nellie R. Prince became the Postmaster of the Smyrna Mills Post Office.

11 December 1981:

Jeannette M. York became the Officer-In-Charge of the Smyrna Mills Post Office.

6 February 1982:

Jeannette M. York became the Postmaster of the Smyrna Mills Post Office.



28 September 1990:

The circular postmark is 33 mm in diameter with a four-bar (F/2) killer.

14 January 1992:

Pennecia L. Qualey became the Officer-In-Charge of the Smyrna Mills Post Office.

2 December 1992:

Torrie M. Kennedy became the Officer-In-Charge of the Smyrna Mills Post Office.

9 January 1993:

Timothy D. Taylor became the Postmaster of the Smyrna Mills Post Office.

30 June 2009:

Heidi L. Swallow became the Officer-In-Charge of the Smyrna Mills Post Office.

9 December 2009:

Barry F. Tower became the Officer-In-Charge of the Smyrna Mills Post Office.

31 January 2013:

Heidi L. Swallow became the Officer-In-Charge of the Smyrna Mills Post Office.

27 July 2013:

Smyrna Mills Post Office was converted to a Remotely Managed Post Office under the direction of the Postmaster of the Houlton Post Office.



August 2020:

The Smyrna Mills Post Office. Photo Credit J. Husson

5 February 2024:

Smyrna Mills Post Office is still operational at 3391 U.S. Route 2, Smyrna Mills, ME 04780. GPS 46° 07' 52" N 68° 09' 41" W

Credits:

This document is based on the original web page compiled by the V. F. Thomas Co. (2021), with revisions and additions by James Husson and Brian Damien (2024).

<http://www.mainephilatelic.org/mph>

Thank you for the contributions to this page by The Strout Family, Jim Husson, and Max Lynds.

Thank you to the Waterville Stamp Club (<https://thewatervillestampclub.com>) for helping ensure this project's continuity.

Sources:

The Post Offices of Maine 2022, Maine Philatelic Society:

<http://www.mainephilatelic.org/books/TPOOM>

T7R3, Smyrna (T6R3), Letter 'B' R2, Sherman Village[map] Atlas of Aroostook County, Maine 1877

https://digitalmaine.com/atlas_aroostook_1877/18/

USGS Topographic Map, Smyrna Mills, Maine 1937

https://ngmdb.usgs.gov/ht-bin/tv_browse.pl?id=0f1c42eadff201f08921e3cc354a8dd6

National Archives Catalog: :Postmaster :Appointments for Aroostook County, Maine

<https://catalog.archives.gov/id/78746425>

Sanders, Christine, The 4-Bar Postmark of the USPS, PMCC Bulletin Reprinted Article, Original Publication Date: June, July & December 2012.

http://www.postmarks.org/resources/PMCC_FourBarCancelsUSPS.pdf

Maine Doane cancels; from the Doane Cancel website,

http://www.doanecancel.com/maine_doanes.html

<http://www.doanecancel.com/doane.html>

Additional material, including links to official records of postmaster appointments, can be found at Research Resources on Maine Postal History:

<http://www.mainephilatelic.org/books/postoffice-sources.pdf>