



In 1903, both post offices in Saint Croix Township, Howe Brook and Saint Croix, appeared on the Post Route Map.. (source: Post Route Map of the State of Maine 1903. Map reproduction courtesy of the Norman B. Leventhal Map & Education Center at the Boston Public Library. [https://collections.leventhalmap.org/search/commonwealth:cj82km77v.](https://collections.leventhalmap.org/search/commonwealth:cj82km77v))

---

## Howe Brook

22 June 1901:

Howe Brook post office opened.

22 June 1901:

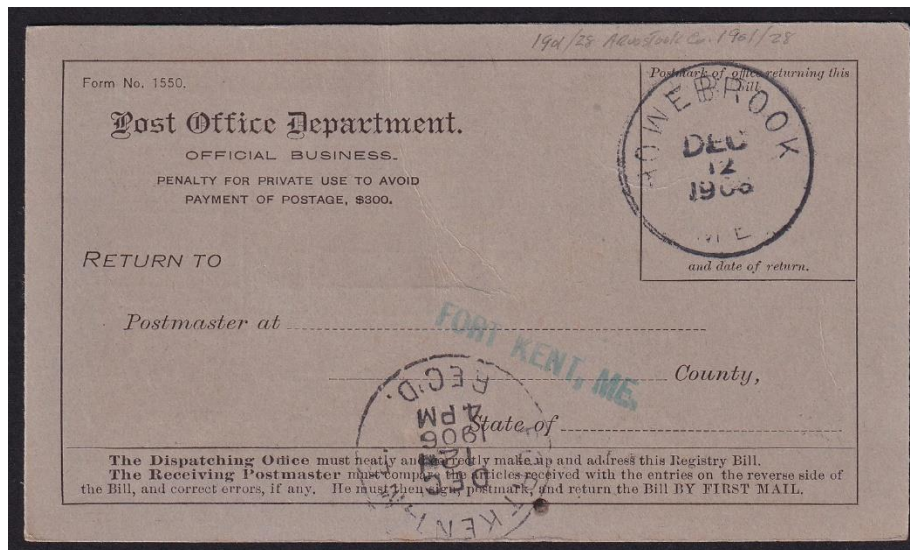
George Swasey became the Postmaster of the Howe Brook Post Office.

3 May 1902:

Clara J. Holden became the Postmaster of the Howe Brook Post Office.

29 April 1904:

George Swasey became the Postmaster of the Howe Brook Post Office.



12 December 1906:

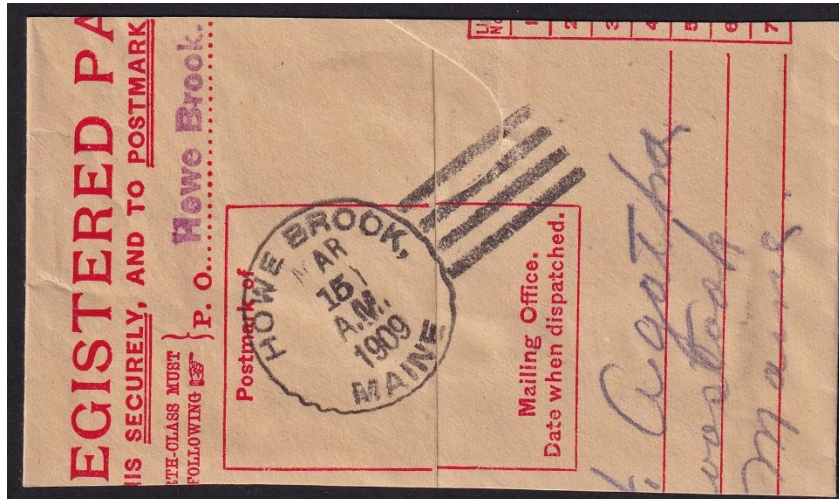
The circular postmark is 28 mm in diameter with no killer.

26 August 1907:

Samuel J. Antwarth became the Postmaster of the Howe Brook Post Office.

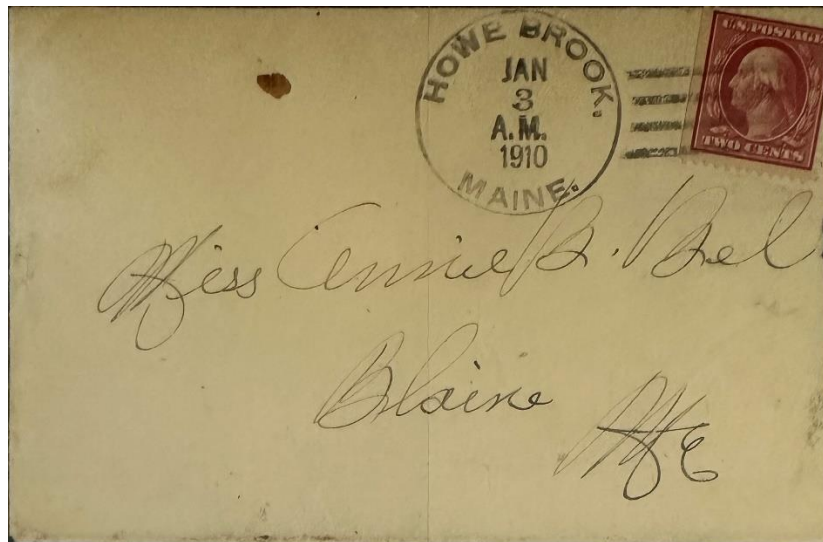
8 January 1909:

Clara P. Castile became the Postmaster of the Howe Brook Post Office.



15 April 1909:

The circular postmark is 34 mm in diameter with a four-bar (A/2) killer.



3 January 1910:

The circular postmark is 31.5 mm in diameter with a four-bar (A/2) killer. A similar postmark and killer dated 4 August 1911 is known.

31 August 1911:

Howe Brook post office closed—service to Hillman.

2 May 1913:

Howe Brook post office re-opened.

2 May 1913:

Clarice P. Castile became the Postmaster of the Howe Brook Post Office.

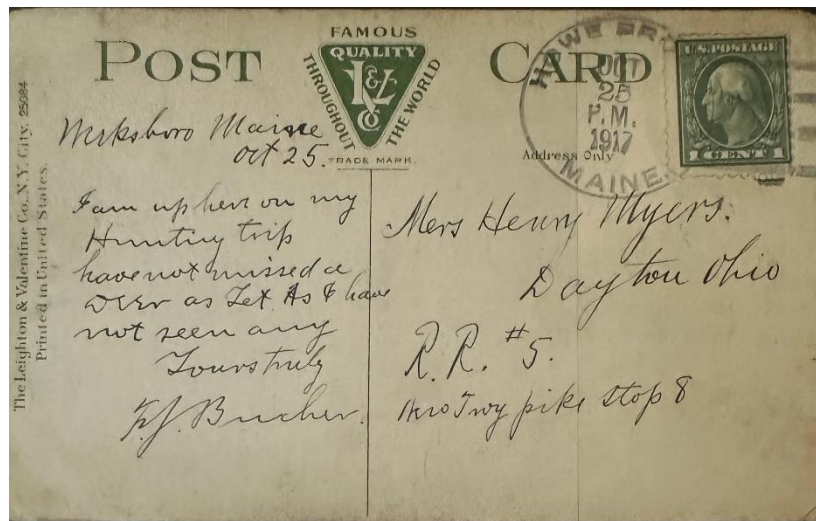
3 June 1915:

Clara J. Holden became the Postmaster of the Howe Brook Post Office.



27 October 1917:

David R. Embleton became the Postmaster of the Howe Brook Post Office. (he declined)



25 October 1917:

The circular postmark is 31.5 mm in diameter with a duplex four-bar (B) killer.  
A similar postmark and killer dated 21 December 1916 is known.

8 April 1918:

Patrick J. Larkin became the Postmaster of the Howe Brook Post Office.

13 April 1920:

Howe Brook Post Office closed. Service was from Griswold, per National Archives Postmaster Records. However, Postal Bulletin 12245 says the discontinuation was rescinded, so this post office may not have closed.

14 January 1921:

Howe Brook post office re-opened. See above.

14 January 1921:

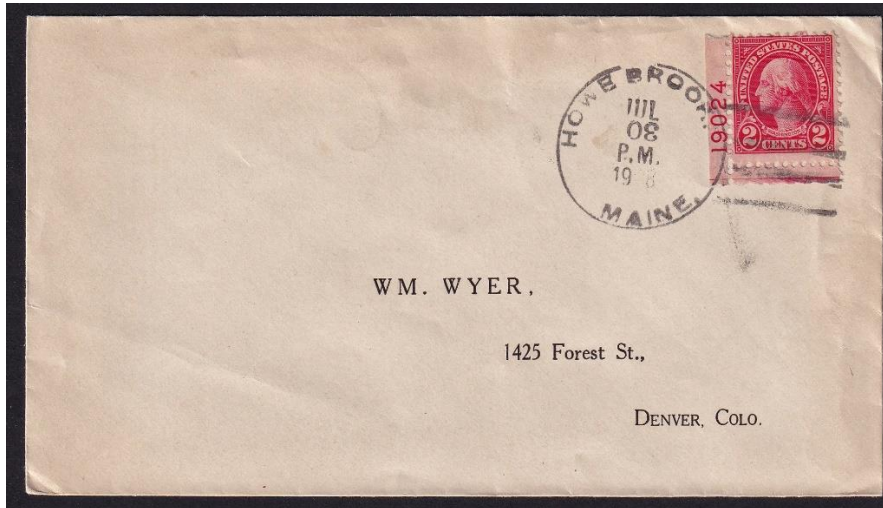
Leon H. Stone became the Postmaster of the Howe Brook Post Office.

21 August 1923:

Viva D. Byers became the Postmaster of the Howe Brook Post Office.

14 December 1927:

Raymond P. Potter became the Postmaster of the Howe Brook Post Office.



30 July 1928: (note: the 30 is reversed)  
The circular postmark is 33 mm in diameter with a four-bar type (C/1) killer.

31 July 1928:

Howe Brook post office closed—service from Smyrna Mills.

## Saint Croix

14 March 1901:

Saint Croix post office opened.

14 March 1901:

Lizzie A. Pride became the Postmaster of the Saint Croix Post Office.



26 August 1901:  
The circular postmark is 28 mm in diameter with a target killer. A similar postmark and killer dated 16 February 1907 is known.

21 March 1907, effective 15 April 1907

Saint Croix post office closed—service from Howe Brook.

---

**Credits:**

This document is based on the original web page compiled by the V. F. Thomas Co. (2021), with revisions and additions by James Husson and Brian Damien (2024).

Thank you for the contributions to this page by Jim Husson and Max Lynds.

Thank you to the Waterville Stamp Club (<https://thewatervillestampclub.com>) for helping ensure this project's continuity.

**Sources:**

The Post Offices of Maine 2022, Maine Philatelic Society:

<http://www.mainephilatelic.org/books/TPOOM>

USGS Topographic Map, 1939, Howe Brook

[https://ngmdb.usgs.gov/ht-bin/tv\\_browse.pl?id=1f9d95b0f4151a6805c99f96cfd118af](https://ngmdb.usgs.gov/ht-bin/tv_browse.pl?id=1f9d95b0f4151a6805c99f96cfd118af)

USGS Topographic Map, 1940, Oxbow

[https://ngmdb.usgs.gov/ht-bin/tv\\_browse.pl?id=0145c334e9290c35d75d66c3b547c9f9](https://ngmdb.usgs.gov/ht-bin/tv_browse.pl?id=0145c334e9290c35d75d66c3b547c9f9)

(Saint Croix appears on the eastern edge of the Oxbow map.)

National Archives Catalog: Postmaster Appointments for Aroostook County, Maine

<https://catalog.archives.gov/id/78746425>

Additional material, including links to official records of postmaster appointments, can be found at Research Resources for Maine Postal History: <http://www.mainephilatelic.org/books/post-office-sources.pdf>.