

Saint John Plantation Postal History

Aroostook County, Maine

Last update for this page: 31 January 2024

This page is part of the Maine Postal History website—a project of the Maine Philatelic Society.
For more information, see <http://www.mainephilatelic.org/mph>

St. John Plantation was settled and organized in 1870.

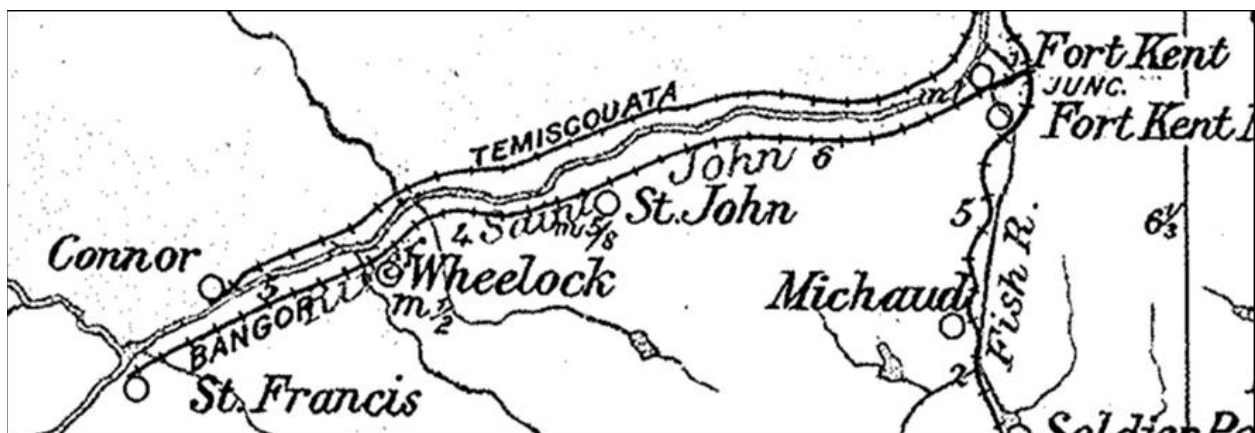
During the history of Saint John Plantation, there have been two post offices.

Briefly, the history of these two is as follows:

1. [Saint John](#) Post Office opened on 20 June 1910 and closed on 30 June 1926.
2. [Wheelock](#) Post Office opened on 4 June 1902 and closed on 30 July 1927.

In 1914, there were two post offices in Saint John Plantation: Saint John and Wheelock. (source: Post Route Map of the State of Maine 1914.

<http://www.mainephilatelic.org/PostRouteMaps/MainePostRouteMap1914.pdf>)



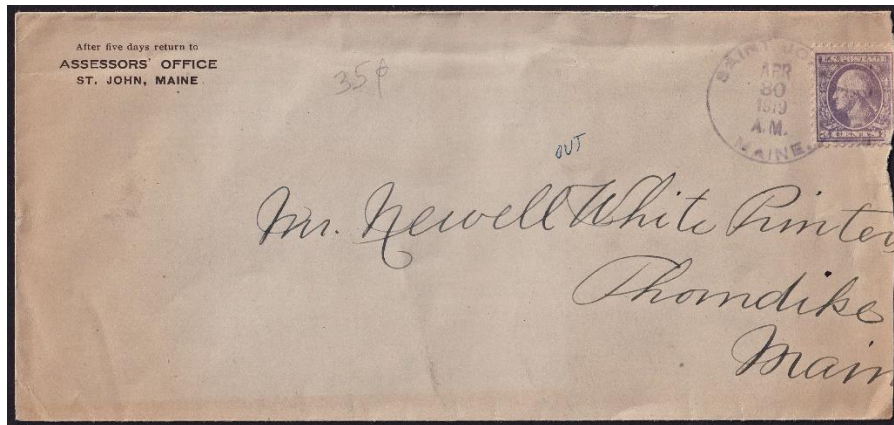
Saint John

20 June 1910:

Saint John Post Office opened.

20 June 1910:

Wm. M. Cyr became the Postmaster of the Saint John Post Office.

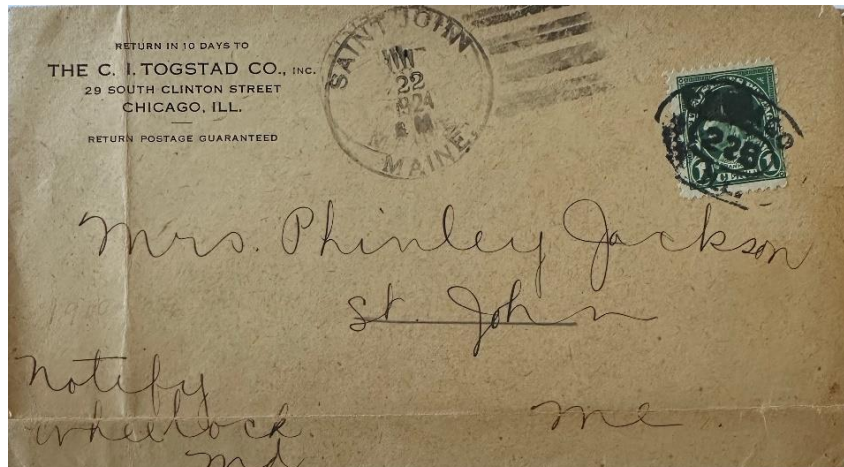


30 April 1919:

The circular postmark is 31 mm in diameter with an unknown killer.

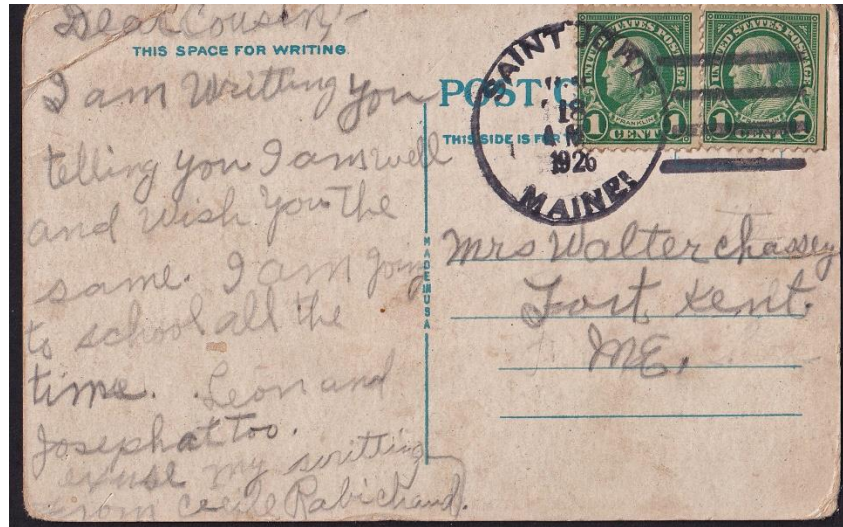
1 October 1920:

Emma M. Robichaud became the Postmaster of the Saint John Post Office.



22 June 1924:

The circular postmark is 33 mm in diameter with a four-bar (C/1) killer.



18 June 1926:

The circular postmark is 33 mm in diameter with a four-bar (C/1) killer.

30 June 1926:

Saint John post office closed—service from Fort Kent.

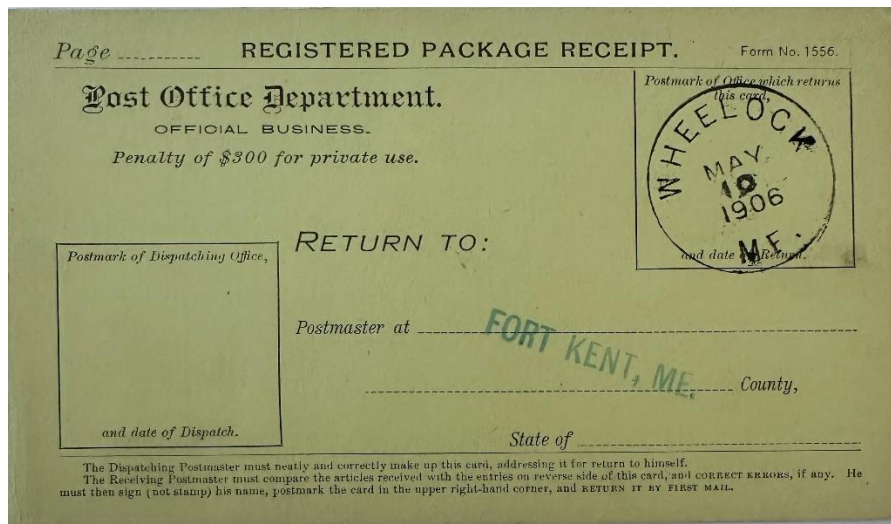
Wheelock

4 June 1902:

Wheelock post office opened.

4 June 1902:

Walter Wheelock became the Postmaster of Wheelock Post Office.



10 May 1906:

The circular postmark is 28 mm in diameter with no killer. A similar postmark dated 30 September 1909 is known.

10 April 1913:

Sarah E. Hartt became the Postmaster of Wheelock Post Office.

The image shows a 'REGISTRY DISPATCH RECEIPT CARD' from Fort Kent, ME. The card is dated February 24, 1917, at 11:00 A.M. The number of registered articles is 626. The card is signed by Sarah E. Hartt, who was the Postmaster at the time. The card includes a 'RECEIVED' stamp and a 'Postmark of Office or R. P. O. which returns this card' stamp. The card is Form 3830, dated 05-6714.

Number of Registered Article.	OFFICE OF ORIGIN.
1 626	FORT KENT, ME.
3	
4	
5	

Receiving office or clerk must note on this card any articles received in bad condition; and correct errors thereon, if any, as prescribed by Sec. 927, P. L. & R.

RECEIVED *one* articles described above.
(Write number.)

Form 3830. (Write signature. See Sec. 930, P. L. & R.) 05-6714

24 February 1917:

The oval postmark is 30 x 33 mm with a four-bar (A/2) killer.

19 July 1918:

Clara O'Leary became the Postmaster of Wheelock Post Office.

10 March 1920:

Ethel L. Thibodeau became the Postmaster of Wheelock Post Office.

13 June 1922:

Gilbert Albert became the Postmaster of Wheelock Post Office.



10 April 1925:

The circular postmark is 33 mm in diameter with a four-bar (A/3) killer.

30 July 1927:

Wheelock post office closed—service from Fort Kent.

Credits:

This document is based on the original web page compiled by the V. F. Thomas Co. (2021), with revisions and additions by James Husson and Brian Damien (2024).

Thank you for the contributions to this page by The Strout Family, Jim Husson, and Max Lynds.

Thank you to the Waterville Stamp Club (<https://thewatervillestampclub.com>) for helping ensure this project's continuity.

Sources:

The Post Offices of Maine 2022, Maine Philatelic Society:

<http://www.mainephilatelic.org/books/TPOOM>

Fort Kent & Saint Francis (T17R9) & Saint John (T17R8) Plantations [map] from the 1877 Atlas of Aroostook County, Maine:

https://digitalmaine.com/atlas_aroostook_1877/46/

Additional material, including links to official records of postmaster appointments, can be found at Research Resources on Maine Postal History: <http://www.mainephilatelic.org/books/post-office-sources.pdf>.

National Archives Catalog: Postmaster Aooointments for Aroostook County, Maine

<https://catalog.archives.gov/id/78746425>