

Wallagrass Postal History

Aroostook County, Maine

Last update for this page: 20 June 2024

This page is part of the Maine Postal History website—a project of the Maine Philatelic Society.
For more information, see <http://www.mainephilatelic.org/mph>

Wallagrass was first organized from T17 R7 WELS in 1840 as Hancock Plantation for election purposes with the township called New Canada. In 1850, it was reorganized from part of Hancock Plantation as Walagrass Plantation, and again in 1863 when it was confirmed, and the spelling changed to Wallagrass Plantation, and again in 1870 and 1871. Wallagrass was incorporated in 1979 as a town.

During the history of the town of Wallagrass, there have been four post offices.

Briefly, the history of these is as follows:

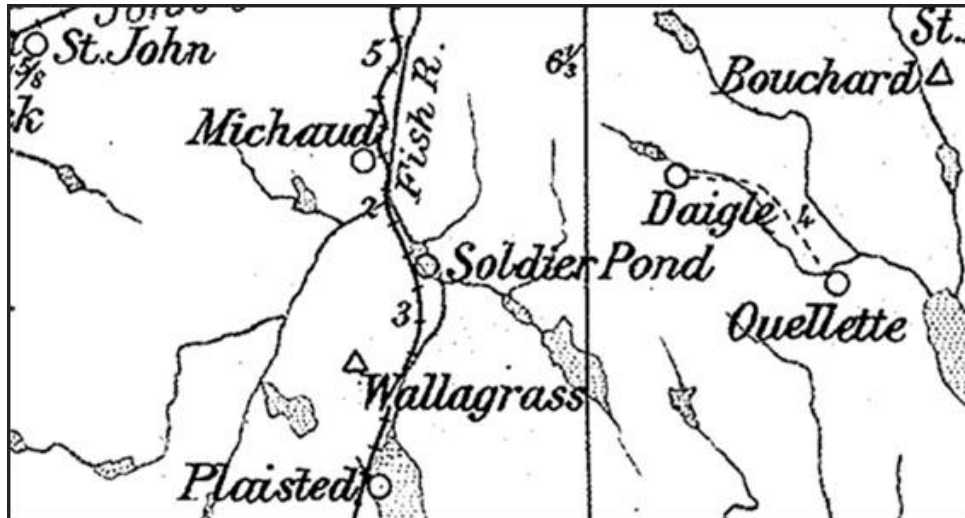
1. [Michaud](#) Post Office opened on 25 April 1905, closed on 15 August 1907, re-opened on 7 January 1909, and closed on 15 July 1935.
2. [Soldier Pond](#) Post Office opened on 28 November 1904 and closed on 30 November 2000. The name was changed to Wallagrass (2) Post Office.
3. [Wallagrass](#) Post Office (1) opened on 29 December 1886, closed on 30 June 1913, re-opened on 15 July 1916, and closed on 31 January 1917.
4. [Wallagrass](#) Post Office (2) opened on 1 December 2000 and is still operating.

What does it mean when there is a (1) or a (2) after the name of a post office?

|

In 1914, there were two post offices in Wallagrass: Michaud and Soldier Pond.
(source: Post Route Map of the State of Maine 1914.

<http://www.mainephilatelic.org/PostRouteMaps/MainePostRouteMap1914.pdf>.)



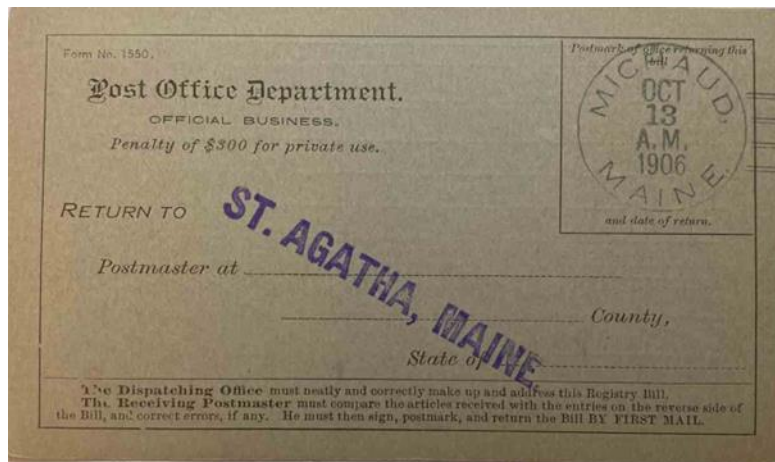
Michaud

25 April 1905:

Michaud Post Office opened.

25 April 1905:

Catherine Michaud became the Postmaster of the Michaud Post Office.



13 October 1906:

The circular postmark is 28 mm in diameter with a Doane 2/1 killer. A similar postmark dated 28 June 1907 is known.

<http://www.mainephilatelic.org/mph>

23 July 1907 Michaud Post Office was discontinued effective 15 August 1907.

15 August 1907:

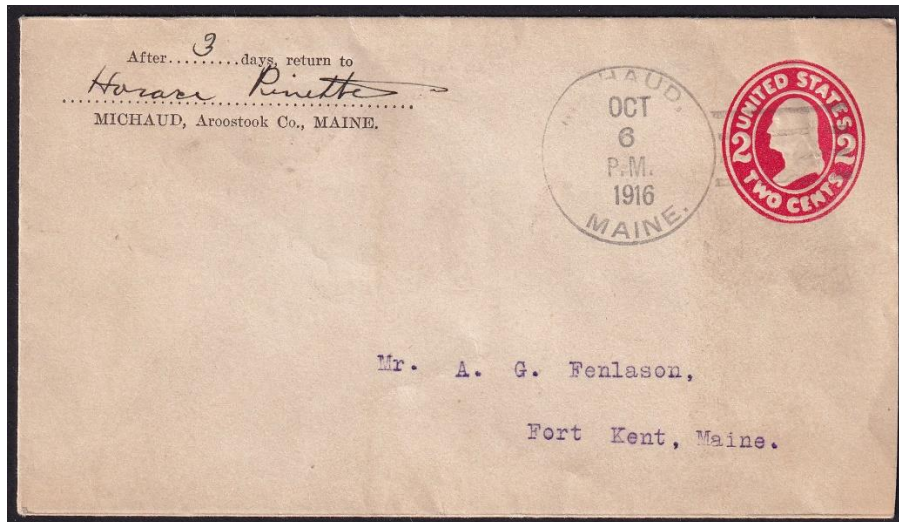
Michaud Post Office closed.

7 January 1909:

Michaud Post Office re-opened.

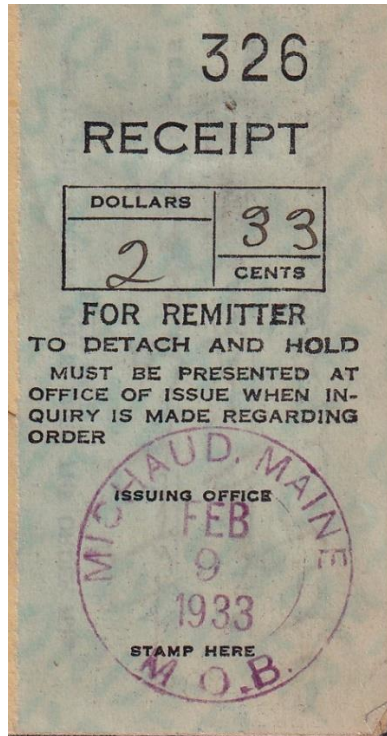
7 January 1909:

George F. Labbee became the Postmaster of the Michaud Post Office.

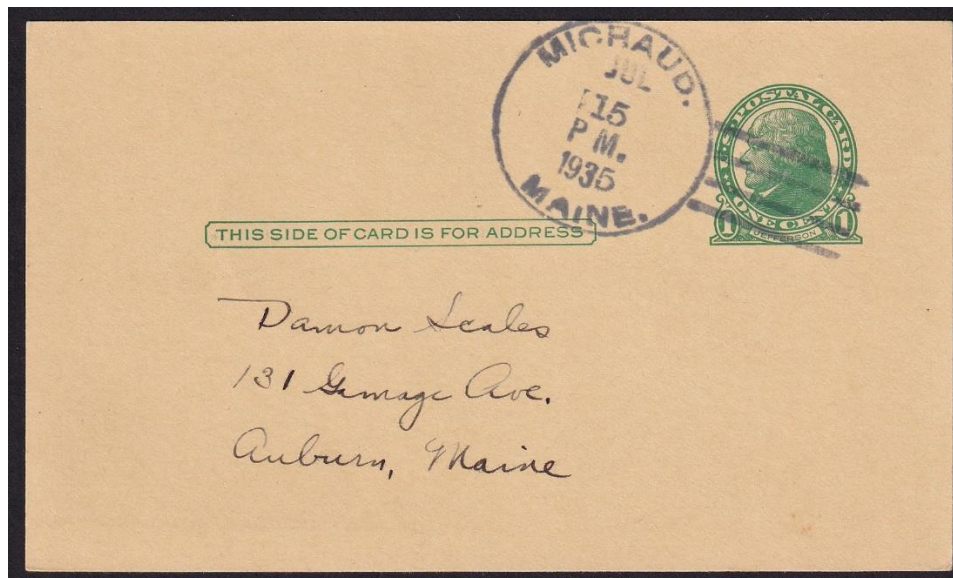


6 October 1916:

The circular postmark is 31 mm in diameter with a four-bar (A/2) killer.



9 February 1933:
The circular postmark is 28 mm in diameter with no killer.



15 July 1935:
The circular postmark is 32 mm in diameter with a four-bar (A/3) killer.

17 June 1935: Michaud Post Office was discontinued effective 15 July 1935.
Michaud Post Office closed.

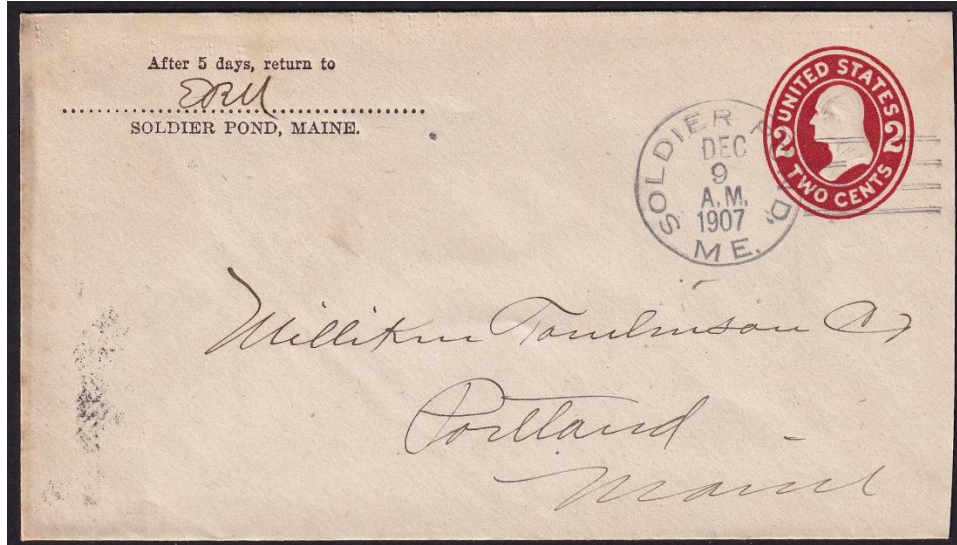
Soldier Pond

28 November 1904:

Soldier Pond Post Office opened.

28 November 1904:

Ernest R. Nelson became the Postmaster of the Soldier Pond Post Office.



9 December 1907:

The circular postmark is 28 mm in diameter with a Doane 2/1 killer.

21 April 1911:

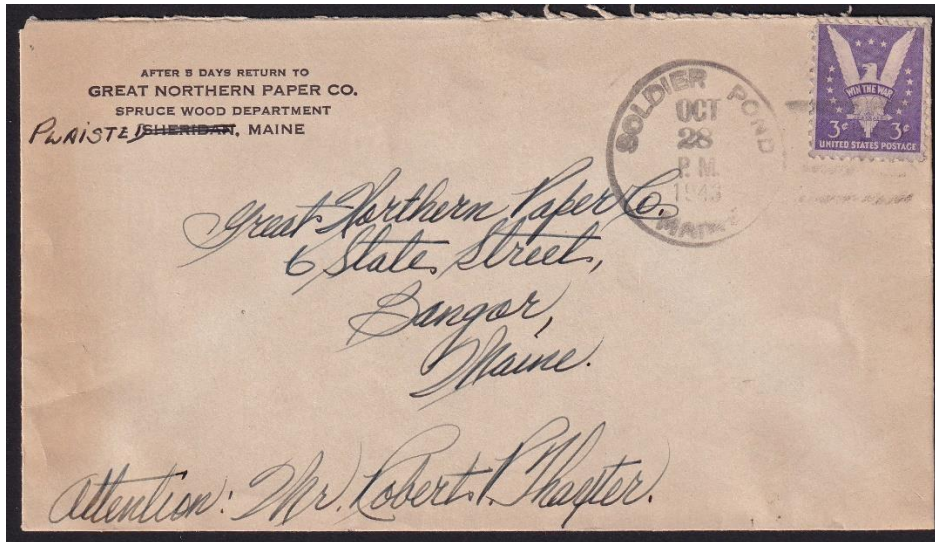
Albert G. Daigle became the Postmaster of the Soldier Pond Post Office.

16 March 1927:

Mrs. Annabelle L. Beaulieu became the Acting Postmaster of the Soldier Pond Post Office.

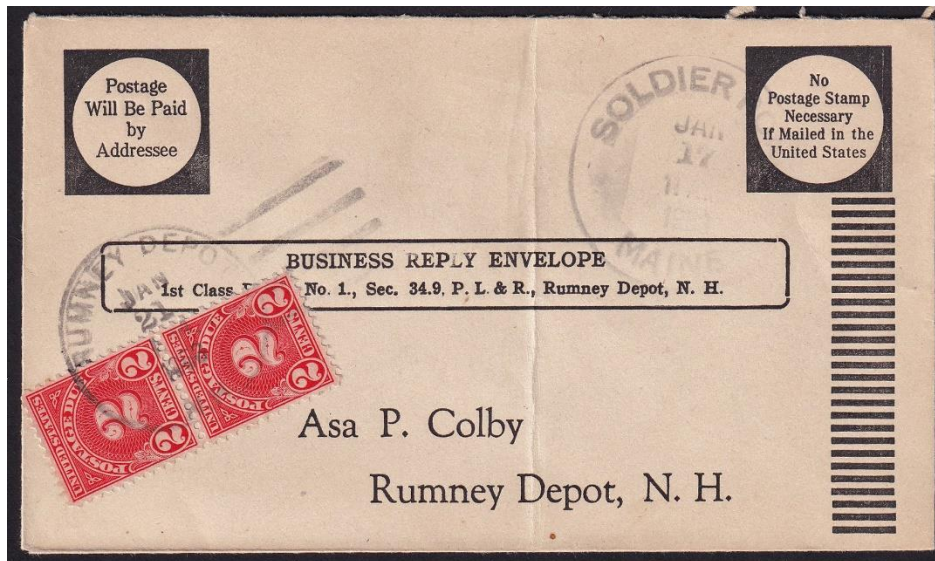
5 October 1927:

Mrs. Annabelle L. Beaulieu became the Postmaster of the Soldier Pond Post Office.



28 October 1943:

The circular postmark is 33 mm in diameter with a four-bar (F/1) killer.

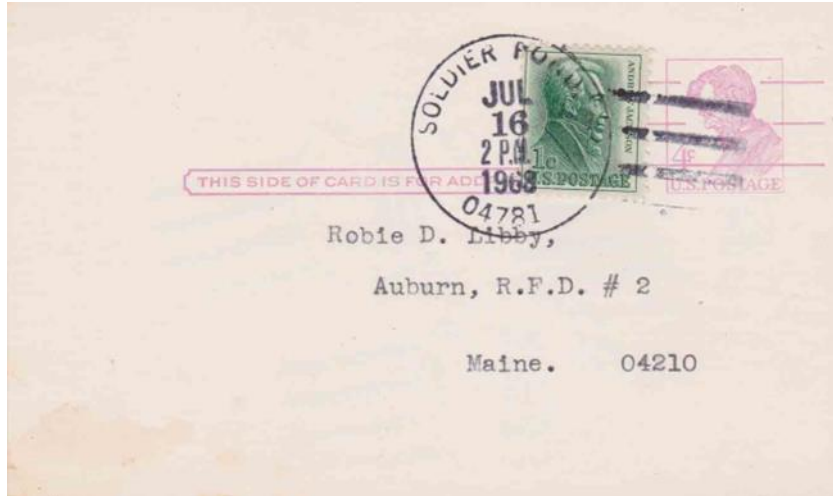


17 January 1953:

The circular postmark is 39 mm in diameter with an unknown killer.

30 April 1968:

Mrs. Edwina C. Bouchard became the Acting Postmaster of the Soldier Pond Post Office.



16 July 1968:

The circular postmark is 33 mm in diameter with a four-bar (B) killer.

1 November 1968:

Mrs. Beulah Bouchard became the Postmaster of the Soldier Pond Post Office.

Unknown date:

An unknown person became the Officer-In-Charge of the Soldier Pond Post Office.

9 January 1993:

Thomas E. Michaud became the Postmaster of the Soldier Pond Post Office.

30 November 2000:

Soldier Pond Post Office closed, and the name changed to Wallagrass (2) Post Office.

Wallagrass (Note: There were two post offices in Maine named Wallagrass at different times and locations. The (1) is just a notation. It does not appear in the postmarks and is only used by postal historians and collectors to differentiate between the different post offices.)

29 December 1896:

Wallagrass (1) Post Office opened.

29 December 1896:

Derina Labbie became the Postmaster of the Wallagrass Post (1) Office.

7 October 1895:

Catharine Labbie became the Postmaster of the Wallagrass (1) Post Office.

3 July 1901:

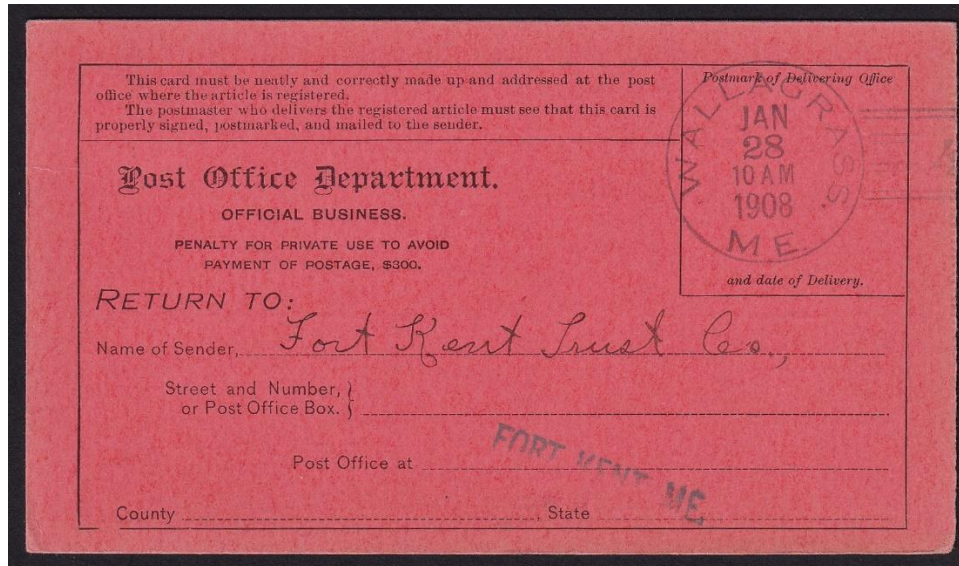
Mrs. Leontine Labbie became the Postmaster of the Wallagrass (1) Post Office.

14 August 1903:

Mrs. Suzanne M. Labbie became the Postmaster of the Wallagrass (1) Post Office.

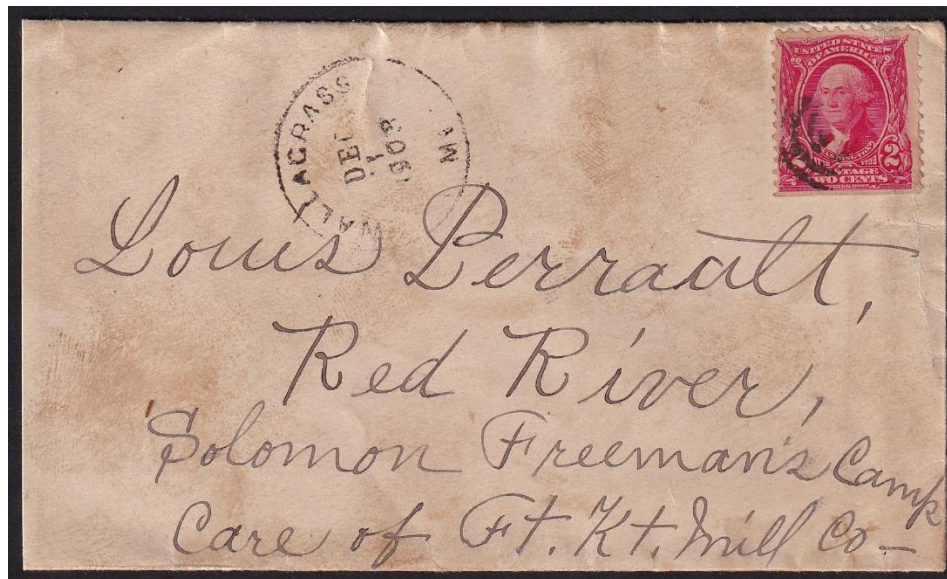
16 October 1906:

Mrs. Thalia Gagnon became the Postmaster of the Wallagrass (1) Post Office.



28 January 1908:

The circular postmark is 28 mm in diameter with a Doane 2/4 killer.



1 December 1908:

The circular postmark is 27 mm in diameter with a partial four-circle target killer.

9 February 1912:

Amedis Raymond became the Postmaster of the Wallagrass (1) Post Office.

30 June 1913:

Wallagrass (1) Post Office closed service from Plaisted.

15 July 1916:

Wallagrass (1) Post Office reopened.

15 July 1916:

Joey Labonte became the Postmaster of the Wallagrass (1) Post Office.

31 January 1917:

Wallagrass (1) Post Office closed service from Plaisted.

Wallagrass (2) (Note: There were two post offices in Maine named Wallagrass at different times and locations. The (2) is just a notation. It does not appear in the postmarks and is only used by postal historians and collectors to differentiate between the different post offices.)

1 December 2000:

Wallagrass Post Office opened, formerly named Soldier Pond.

9 January 1993:

Thomas E. Michaud became the Postmaster of the Soldier Pond Post Office and remained Postmaster when the Soldier Pond Post Office was renamed the Wallagrass Post Office on 1 December 2000.

8 July 2003:

Bernice Jalbert became the Officer-In-Charge of the Wallagrass (2) Post Office.

22 January 2004:

Jo King became the Officer-In-Charge of the Wallagrass (2) Post Office.

24 June 2004:

Bernice Jalbert became the Officer-In-Charge of the Wallagrass (2) Post Office.

18 September 2004:

Cecile P. Casey became the Postmaster of the Wallagrass (2) Post Office.

21 August 2009:

Bernice Jalbert became the Officer-In-Charge of the Wallagrass (2) Post Office.

2 September 2011:

Valerie A. Voisine became the Officer-In-Charge of the Wallagrass (2) Post Office.

3 June 2013:

Bernice Jalbert became the Officer-In-Charge of the Wallagrass (2) Post Office.

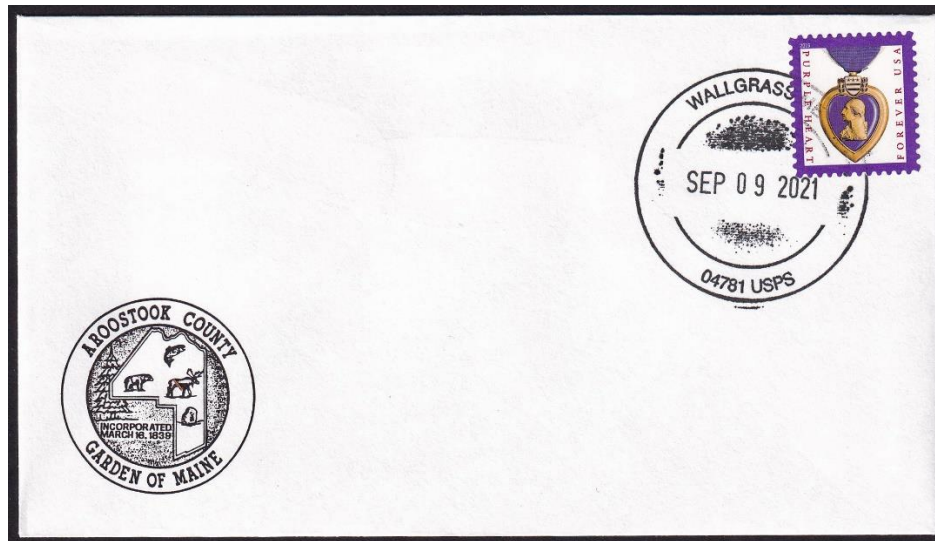
15 June 2013:

Wallagrass (2) Post Office was converted to a Remotely Managed Post Office under the direction of the Postmaster of the Fort Kent Post Office.



9 September 2021:

The outer circle of the circular postmark is 44 mm in diameter, with the CDS used as a killer.



9 September 2021:

The outer circle of the circular postmark is 41 mm in diameter with the CDS used as a killer.



July 2023:
The Wallagrass Post Office. Photo Credit Dennis Dixon

7 February 2024:

Wallagrass (2) Post Office is still operational at 174 Soldier Pond Rd. Wallagrass ME 04781 GPS 47° 09' 19" N 68° 34' 22" W.

What does it mean when there is a (1) or (2) after the name of a post office?

Sometimes the numbers (1) and (2) appear after the name of a post office. These numbers indicate the (first) and (second) localities of post offices of the same name. For example, if the post office name is used for two separate post offices in two respective villages at different times, they will be identified in this manner. These numbers do not necessarily indicate time periods.

These numbers do not represent numbered stations. Some larger places, like Auburn, have postal stations with numbers. These differ from the post offices we call Auburn (1), Auburn (2), etc.

Also: the numbers do not appear in postmarks or official post office publications. However, they are used by postal historians and collectors to refer to different post offices, as noted above.

Credits:

This document is based on the original web page compiled by the V. F. Thomas Co. (2021), with revisions and additions by James Husson and Brian Damien (2024).

Thank you for the contributions to this page by The Strout Family, Jim Husson, and Max Lynds.

Thank you to the Waterville Stamp Club (<https://thewatervillestampclub.com>) for helping ensure this project's continuity.

Sources:

The Post Offices of Maine 2022, Maine Philatelic Society:

<http://www.mainephilatelic.org/books/TPOOM>

Fort Kent (T18R6 & 7), Wallagrass Plantation (T17R7) & T17R6 [map] from the 1877 Atlas of Aroostook County, Maine:

https://digitalmaine.com/atlas_aroostook_1877/47/

USGS Topographic Map, Eagle Lake, Maine, 1931. Shows locations of Michaud, Plaisted, and Soldier Pond villages.

https://ngmdb.usgs.gov/ht-bin/tv_browse.pl?id=47aa99325b69433b4c4b21fde9be8fcf

National Archives Catalog: Postmaster Appointments for Aroostook County, Maine

<https://catalog.archives.gov/id/78746425>

Sanders, Christine, The 4-Bar Postmark of the USPS, PMCC Bulletin Reprinted Article, Original Publication Date: June, July & December 2012.

http://www.postmarks.org/resources/PMCC_FourBarCancelsUSPS.pdf

Maine Doane cancels; from the Doane Cancel website,

http://www.doanecancel.com/maine_doanes.html

<http://www.doanecancel.com/doane.html>

Additional material, including links to official records of postmaster appointments, can be found at Research Resources on Maine Postal History: <http://www.mainephilatelic.org/books/post-office-sources.pdf>.