

Washburn Postal History

Aroostook County, Maine

Last update for this page: 11 July 2024

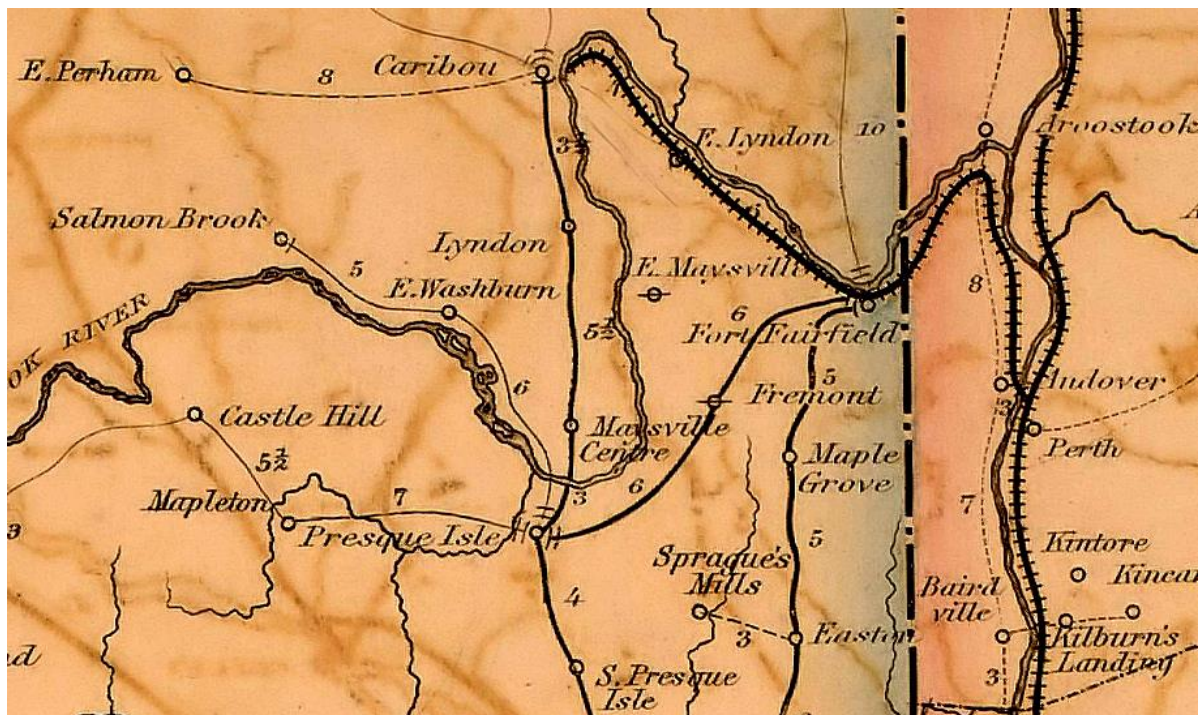
This page is part of the Maine Postal History website—a project of the Maine Philatelic Society.
For more information, see <http://www.mainephilatelic.org/mph>.

Washburn is a town in Aroostook County, Maine, United States. It was incorporated on February 25, 1861. During the history of the town of Washburn, there have been four post offices.

Briefly, the history of these four is as follows:

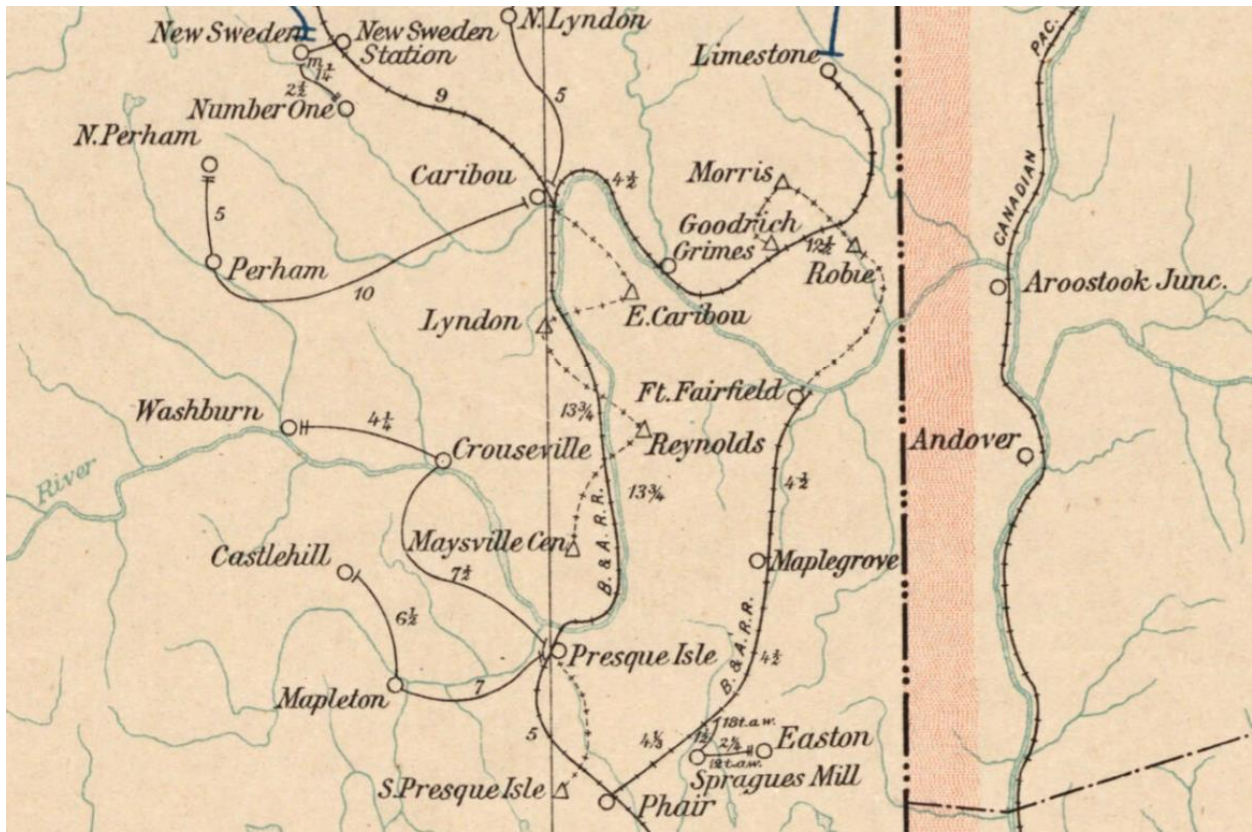
1. [Crouseville](#) Post Office opened on 25 July 1896 and closed on 2 April 2021.
2. [East Washburn](#) Post Office opened on 5 August 1874 and closed on 22 January 1895.
3. [Salmon Brook](#) Post Office opened on 24 March 1858 and on 25 November 1879 was renamed as Washburn Post Office.
4. [Washburn](#) Post Office (formerly Salmon Brook Post Office) opened on 25 November 1879 and is still operating.

In 1869, there were two post offices operating in Washburn: Salmon Brook, and East Washburn.
(Source_ Post Route Map of the State of Maine, 1869. Courtesy of the University of North Texas Libraries:
<https://texashistory.unt.edu/ark:/67531/metaph298381/?q=postal>)



In 1903, there were two post offices operating in Washburn: Washburn and Crouseville.

Source: Post Route Map of the State of Maine 1903. Courtesy of the Norman B. Leventhal Map & Education Center at the Boston Public Library: <https://collections.leventhalmap.org/search/commonwealth:cj82km77v>



Crouseville

25 July 1896:

Crouseville post office opened.

25 July 1896:

Wilmot Crouse became the Postmaster of the Crouseville Post Office.



30 April 1900:

The circular postmark is 27 mm in diameter with a partial circle target killer.

12 January 1904:

Herbert L. Crouse became the Postmaster of the Crouseville Post Office.

6 June 1908:

Winfield J. Crouse became the Postmaster of the Crouseville Post Office.



Date unknown:
Crouseville Post Office.

<http://www.mainephilatelic.org/mpb>

12 March 1910

Ethel M. Burttt became the Postmaster of the Crouseville Post Office.

21 January 1916:

Mamie L. Crouse became the Postmaster of the Crouseville Post Office.

24 September 1917:

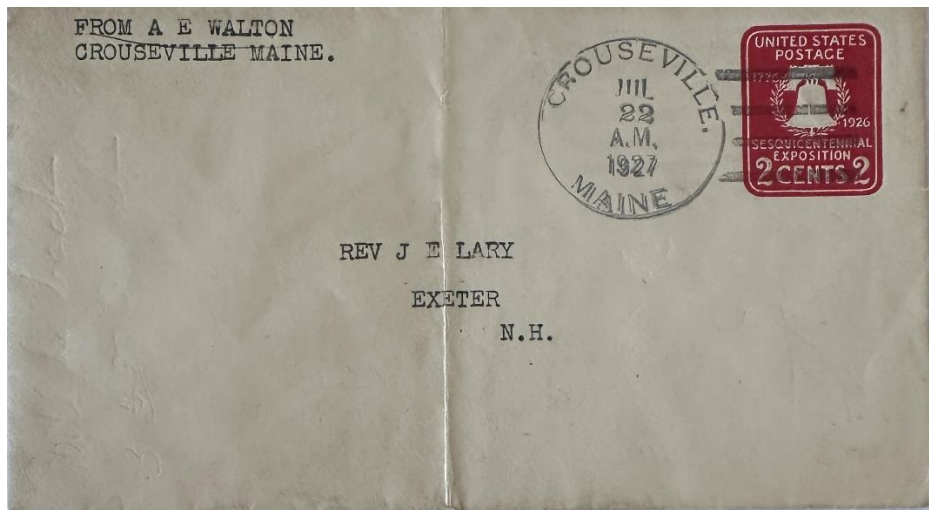
Wallace E. Woodman became the Postmaster of the Crouseville Post Office.

20 January 1920:

Fred F. Lewelling became the Postmaster of the Crouseville Post Office.

11 May 1922:

Mary A. Buck became the Postmaster of the Crouseville Post Office.



22 July 1927:

The circular postmark is 32.5 mm in diameter with a four-bar (C/1) killer—note period after Crouseville but not Maine.

23 February 1929, effective 15 March 1929:

Crouseville Post Office was discontinued with service from Washburn but was rescinded on 8 March 1929.

5 August 1931:

Forest E. Crouse became the Acting Postmaster of the Crouseville Post Office.

10 August 1931:

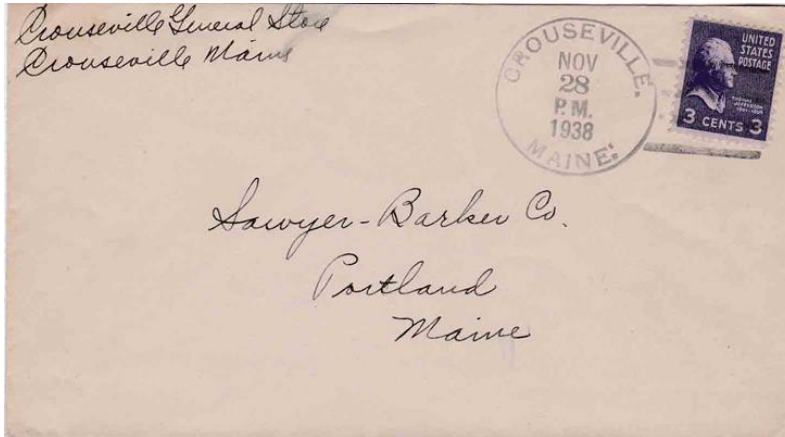
Forest E. Crouse became the Postmaster of the Crouseville Post Office.

21 March 1932:

Mrs. Constance Crouse became the Acting Postmaster of the Crouseville Post Office.

8 April 1932:

Mrs. Constance Crouse became the Postmaster of the Crouseville Post Office.

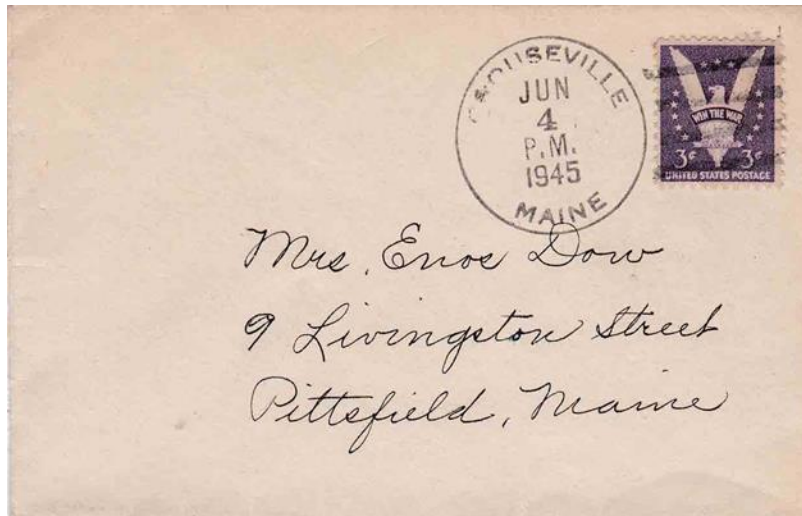


28 November 1938:

The circular postmark is 32.5 mm in diameter with a four-bar (C/2) killer. Note the period after Crouseville and Maine.

8 August 1939:

Clarence E. Hall became the Postmaster of the Crouseville Post Office.



4 June 1945:

The circular postmark is 32.5 mm in diameter with a four-bar (F/1) killer (note: no period after Crouseville or Maine). A similar postmark dated 25 October 1949 is known.

4 December 1946:

Gordon D. Everett became the Acting Postmaster of the Crouseville Post Office.

20 February 1948:

Gordon D. Everett became the Postmaster of the Crouseville Post Office.

10 November 1950:

Milford L. Libby became the Acting Postmaster of the Crouseville Post Office.

6 March 1951:

Milford L. Libby became the Postmaster of the Crouseville Post Office.



2 March 1965:

The circular postmark is 33 mm in diameter with a four-bar (F/2) killer.

2 June 1978:

Mrs. Ardis D. Libby became the Officer-In-Charge of the Crouseville Post Office.

4 November 1978:

Mrs. Ardis D. Libby became the Postmaster of the Crouseville Post Office.

1 July 1999:

Michael Lahey became the Officer-In-Charge of the Crouseville Post Office.

22 October 1999:

Karen Gagnon became the Officer-In-Charge of the Crouseville Post Office.

11 February 2000:

Artheline Bernier became the Officer-In-Charge of the Crouseville Post Office.

7 June 2000:

Karen A. Gagnon became the Officer-In-Charge of the Crouseville Post Office.

23 June 2000:

Artheline Bernier became the Officer-In-Charge of the Crouseville Post Office.

18 October 2000:

Arthurlene J. Fox became the Officer-In-Charge of the Crouseville Post Office.

3 November 2000:

Artheline Bernier became the Officer-In-Charge of the Crouseville Post Office.

21 February 2001:

Arthurlene J. Fox became the Officer-In-Charge of the Crouseville Post Office.

5 March 2001:

Artheline Bernier became the Officer-In-Charge of the Crouseville Post Office.

29 January 2002:

R. Dale Nason became the Officer-In-Charge of the Crouseville Post Office.

3 May 2002:

W. Wayne Greer became the Officer-In-Charge of the Crouseville Post Office.

29 May 2002:

Artheline Bernier became the Officer-In-Charge of the Crouseville Post Office.

8 August 2002:

Linda Lavway became the Officer-In-Charge of the Crouseville Post Office.

23 January 2003:

Artheline Bernier became the Officer-In-Charge of the Crouseville Post Office.

7 February 2003:

Linda J. Lavway became the Officer-In-Charge of the Crouseville Post Office.

14 March 2003:

Warren A. Bragg became the Officer-In-Charge of the Crouseville Post Office.

2 May 2003:

Clinton H. Watson became the Officer-In-Charge of the Crouseville Post Office.

2 July 2003:

Linda J. Lavway became the Officer-In-Charge of the Crouseville Post Office.

1 December 2004:

Barbara N. Skidgel became the Officer-In-Charge of the Crouseville Post Office.

17 March 2005:

Deborah J. Rideout became the Officer-In-Charge of the Crouseville Post Office.

Date Unknown:

Chris Cronkhite became the Officer-In-Charge of the Crouseville Post Office.

10 February 2014:

Lisa A. Nascimbeni became the Officer-In-Charge of the Crouseville Post Office.

12 July 2014:

Crouseville Post Office was converted to a Remotely Managed Post Office under the direction of the Postmaster of the Presque Isle Post Office.

2 April 2021:

Crouseville Post Office closed.

East Washburn

5 August 1874:

East Washburn Post Office opened.

5 August 1874:

Jessie Crouse became the Postmaster of the East Washburn Post Office.

5 December 1882:

George W. Greenland became the Postmaster of the East Washburn Post Office.

27 December 1882:

George W. Greenlaw became the Postmaster of East Washburn Post Office. (probably a spelling correction)

27 May 1886:

George Easler became the Postmaster of the East Washburn Post Office.

22 January 1895:

East Washburn Post Office closed. Service from Washburn.

Salmon Brook

24 March 1858:

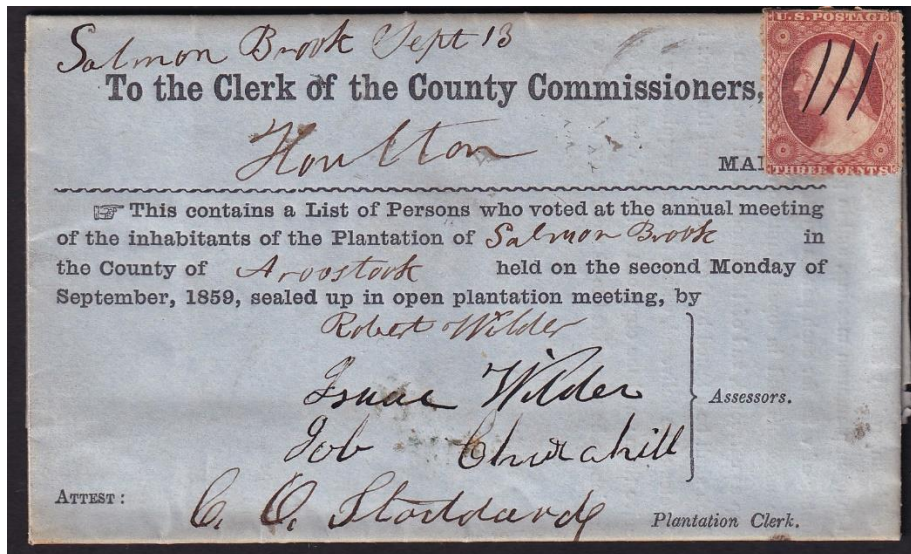
Salmon Brook Post Office opened.

24 March 1858:

Thomas Linton became the Postmaster of the Salmon Brook Post Office.

7 June 1859:

Robert Wilder became the Postmaster of the Salmon Brook Post Office.



13 September 1859:

Manuscript postmark and killer.

26 January 1874:

Arthur C. Perry became the Postmaster of the Salmon Brook Post Office.



28 May 1875:

The circular postmark is 25 mm in diameter with a four-circle target killer.

7 June 1875:

Adaline M. Wilder became the Postmaster of the Salmon Brook Post Office.

25 November 1879:

The Salmon Brook Post Office closed and was renamed Washburn Post Office.

Washburn

25 November 1879:

Washburn Post Office opened (formerly named Salmon Brook Post Office)

7 June 1875:

Adaline M. Wilder became the Postmaster of the Salmon Brook Post Office and remained Postmaster when the Salmon Brook Post Office closed and was renamed Washburn Post Office on 25 November 1879.

31 January 1881:

Fred L. Farnham became the Postmaster of the Washburn Post Office.



27 May 1884:

The outer circle of this triple-ringed circle postmark is 30 mm in diameter, with a fancy star within a star killer.



23 February 1885:

The circular postmark is 26 mm in diameter with a partial four-circle target killer.

20 August 1886:

Turner Willey became the Postmaster of the Washburn Post Office.

12 June 1889:

James M. Story became the Postmaster of the Washburn Post Office.

16 March 1896:

Albion L. Hatch became the Postmaster of the Washburn Post Office.

7 October 1896:

John L. Woodman became the Postmaster of the Washburn Post Office.

15 September 1899:

James M. Story became the Postmaster of the Washburn Post Office.



16 September 1901:

The circular postmark is 29 mm in diameter with a possible circle grid killer.

10 September 1910:

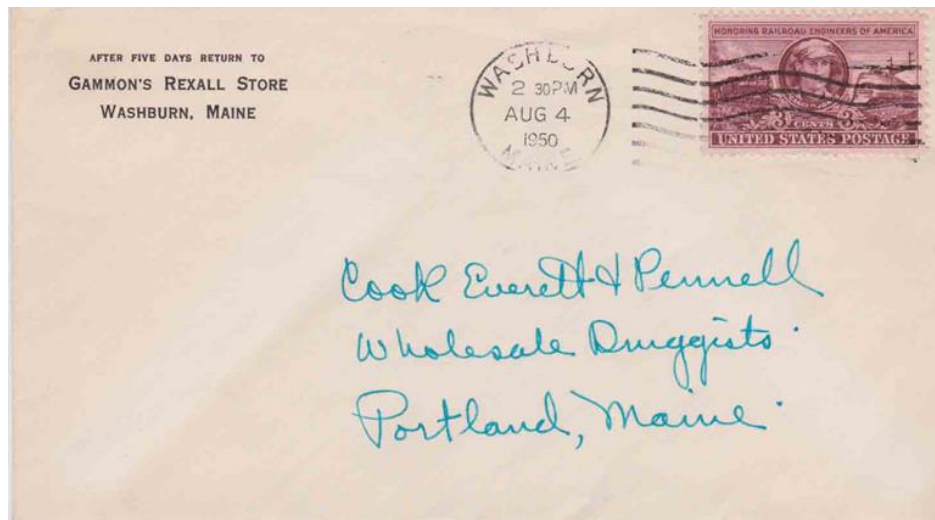
Delbert M. Story became the Postmaster of the Washburn Post Office.

30 January 1922:

David L. Duncan became the Postmaster of the Washburn Post Office.

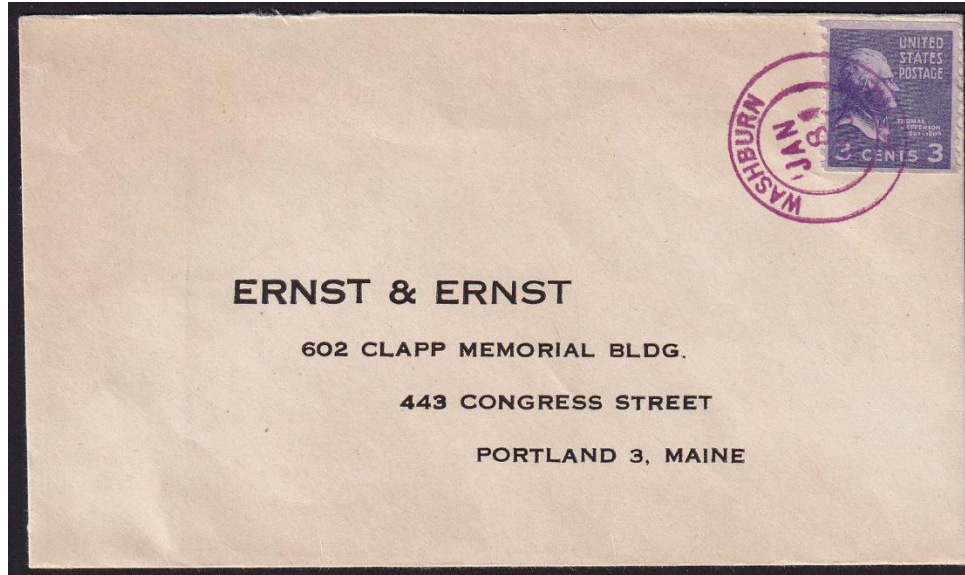
13 February 1935:

Mrs. Mary M. Freeman became the Postmaster of the Washburn Post Office.



4 August 1950:

The circular Postmark is 24 mm in diameter with a seven-wavy line Columbia machine killer. A similar postmark and killer dated 21 December 1938 is known.



8 January 1961:

The outer circle of this double-ringed postmark is 28 mm in diameter with no killer.

30 December 1965:

Mrs. Elaine R. Corey became the Acting Postmaster of the Washburn Post Office.

11 February 1966:

Matthew W. McManus became the Acting Postmaster of the Washburn Post Office.

13 March 1970:

Mrs. Elaine R. Corey became the Officer-In-Charge of the Washburn Post Office.

9 January 1971:

Mrs. Elaine R. Corey became the Postmaster of the Washburn Post Office.

29 October 1982:

Paul J. Michaud became the Officer-In-Charge of the Washburn Post Office.

19 February 1983:

Elena M. Long became the Postmaster of the Washburn Post Office.

30 November 1990:

Gregory D. Ottinger became the Officer-In-Charge of the Washburn Post Office.

25 March 1991:

Clifford J. Pelletier became the Officer-In-Charge of the Washburn Post Office.

20 April 1991:

Rickey M. Corey became the Postmaster of the Washburn Post Office.

8 May 2002:

Donald Embleton became the Officer-In-Charge of the Washburn Post Office.

9 August 2002:

Stuart G. Turner became the Officer-In-Charge of the Washburn Post Office.

7 September 2002:

Stuart G. Turner became the Postmaster of the Washburn Post Office.

2 August 2012:

Curtis Culberson became the Officer-In-Charge of the Washburn Post Office.

7 September 2013:

Washburn Post Office was converted to a Remotely Managed Post Office under the direction of the Postmaster of the Caribou Post Office.



July 2003:

Washburn Post Office. Photo Credit Dennis Dixon

7 February 2024:

Washburn Post Office is still operating at 9 Woodman St., Washburn, ME 04786 GPS 46° 47' 15" N 68° 09' 20" W

Credits:

This document is based on the original web page compiled by the V. F. Thomas Co. (2021), with revisions and additions by James Husson and Brian Damien (2024).

Thank you for the contributions to this page by the Strout Family, Jim Husson, and Max Lynds.

Thank you to the Waterville Stamp Club (<https://thewatervillestampclub.com>) for helping ensure this project's continuity.

Sources:

The Post Offices of Maine 2022, Maine Philatelic Society:

<http://www.mainephilatelic.org/books/TPOOM>

Washburn (T13R3) & Wade (T13R4), Castle Hill (T12R4) & Mapleton (T12R3) Plantations [map] from the 1877 Atlas of Aroostook County, Maine:

https://digitalmaine.com/atlas_aroostook_1877/37/

National Archives Catalog: Postmaster Appointments for Aroostook County, Maine

<https://catalog.archives.gov/id/78746425>

Sanders, Christine, The 4-Bar Postmark of the USPS, PMCC Bulletin Reprinted Article, Original Publication Date: June, July & December 2012.

http://www.postmarks.org/resources/PMCC_FourBarCancelsUSPS.pdf

U. S. Cancel Finder: Find a Machine Cancel by Style, on the Swanson Group website:

<http://swansongrp.com/postal/about/index.html>

Additional material, including links to official records of postmaster appointments, can be found at Sources for Researching Maine Post Offices, Postmasters, and Postal History:

<http://www.mainephilatelic.org/books/post-office-sources.pdf>.