

Woodland Postal History

Aroostook County, Maine

Last update for this page: 10 July 2024

This page is part of the Maine Postal History website—a project of the Maine Philatelic Society.
For more information, see <http://www.mainephilatelic.org/mph>

Woodland, originally Township 14, Range 3, is a town in Aroostook County. It was first settled in 1860 and organized as a plantation on April 25, 1861. In 1878, the state Legislature confirmed its organization as a plantation. Only two years later, on March 5, 1880, Woodland was incorporated as a town.

Woodland is adjacent to New Sweden, and many of Woodland's early settlers were immigrants from Sweden.

During the history of Woodland, there have been four post offices.

Briefly, the history of these is as follows:

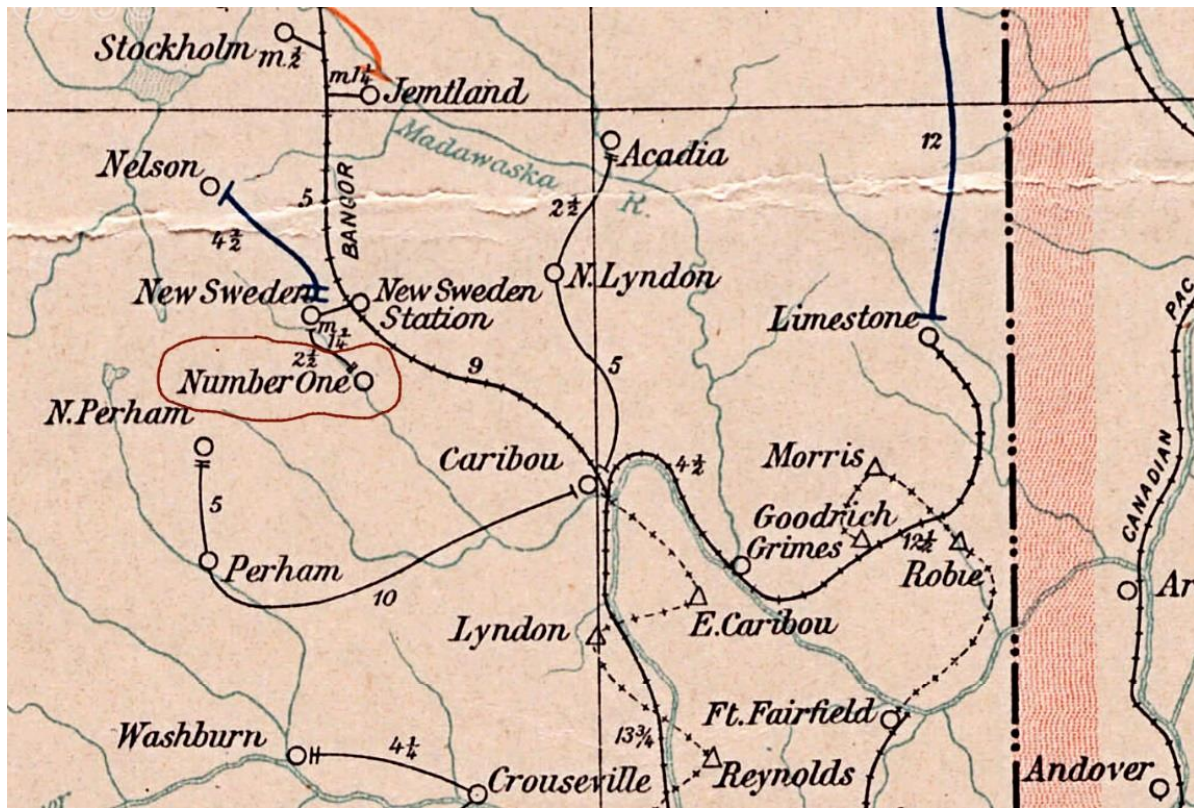
1. [Carson](#) Post Office (formerly South Woodland Post Office) opened on 5 October 1912 and closed on 30 April 1913.
2. [Number One \(2\)](#) Post Office opened on 7 June 1880, closed on 27 May 1893, re-opened on 9 February 1894, and closed on 14 January 1905.
3. [South Woodland](#) Post Office opened on 12 July 1912 and was renamed Carson Post Office on 5 October 1912.
4. [Woodland \(1\)](#) Post Office never opened but had “opening” and “closing” dates of 14 February 1901 and 28 March 1901, respectively.

[. What does it mean when there is a \(1\) or \(2\) after the name of a post office? See the explanation near the end of this document.](#)

In 1903, there was one post office in Woodland, Number One..

Source: Post Route Map of the State of Maine 1903. Map reproduction courtesy of the Norman B. Leventhal Map & Education Center at the Boston Public Library.

<https://collections.leventhalmap.org/search/commonwealth:cj82km77v>



Carson

5 October 1912:

Carson Post Office (formerly South Woodland Post Office) opened.

12 July 1912:

Clarence H. Judkins became the Postmaster of the South Woodland Post Office and remained Postmaster when the South Woodland Post Office became the Carson Post Office on 5 October 1912.

30 April 1913:

Carson Post Office is closed with service from Washburn.

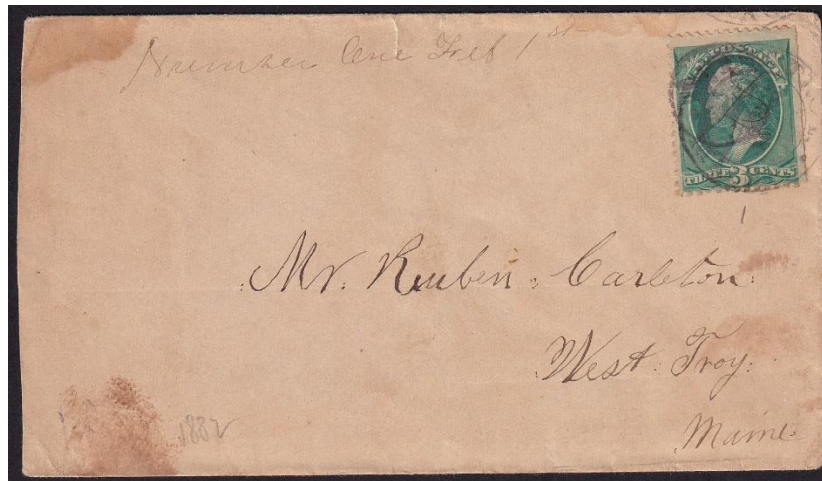
Number One (2) Note: There was another post office in Maine named Number One at a different time and location. The (2) is just a notation. It does not appear in the postmarks and is only used by postal historians and collectors to differentiate between the different post offices.

7 June 1880:

Number One (2) Post Office (also seen as Numberone) opened.

7 June 1880:

Ida M. Brown became the Postmaster of the Number One (2) Post Office.



1 February 1882:
Manuscript postmark and killer.



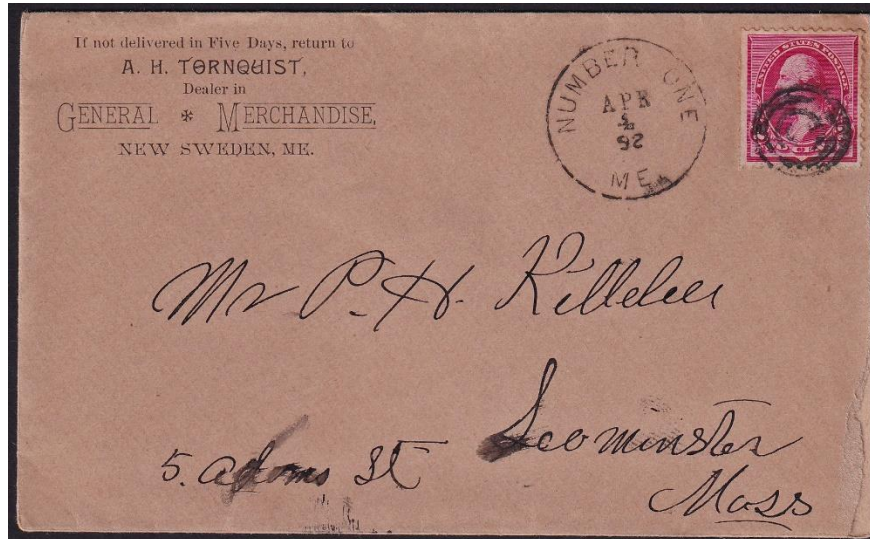
10 November 1885:
Manuscript postmark and killer.

26 April 1887:

Sevilian W. Field became the Postmaster of the Number One (2) Post Office.

29 May 1889:

Sumner Hackett became the Postmaster of the Number One (2) Post Office.



4 April 1892:

The circular postmark is 28 mm in diameter with a four-circle target killer.

27 May 1893:

Number One (2) Post Office closed with service from Caribou.

9 February 1894:

Number One (2) Post Office re-opened.

9 February 1894:

Harriet F. Robinson became the Postmaster of the Number One (2) Post Office.

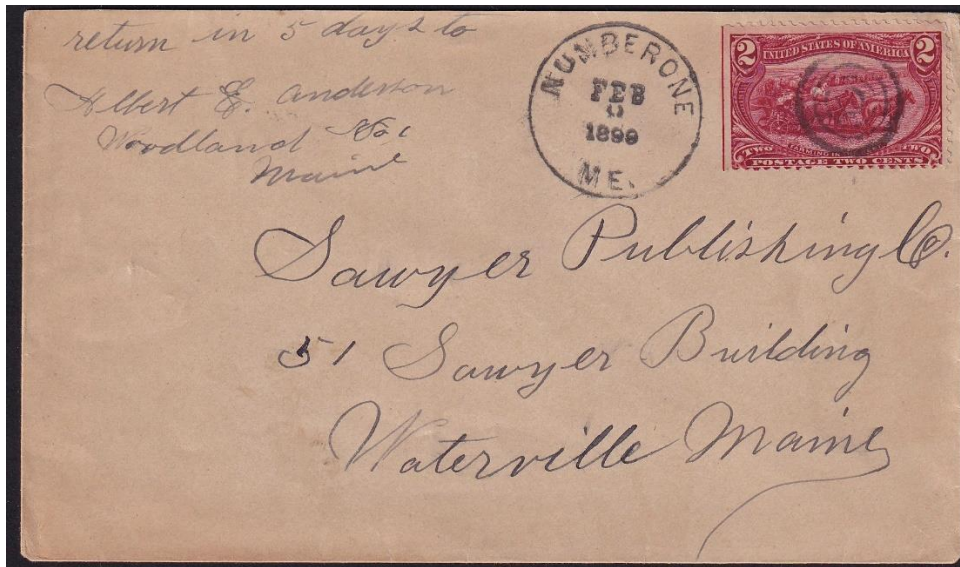
19 November 1895:

Charles A. Piltz became the Postmaster of the Number One (2) Post Office.



1 September 1898:

The circular postmark is 28.5 mm in diameter with no killer.



9 February 1899:

The circular postmark is 28 mm in diameter with a four-circle target killer.

3 May 1903:

Charles T. Goodwin became the Postmaster of the Number One (2) Post Office.

14 December 1904 discontinued: effective 14 January 1905:

Number One (2) Post Office closed with service from New Sweden.

South Woodland

12 July 1912:

South Woodland Post Office opened.

12 July 1912:

Clarence H. Judkins became the Postmaster of the South Woodland Post Office.

5 October 1912:

South Woodland Post Office closed and renamed Carson Post Office.

Woodland (1) Note: There was another post office in Maine named Woodland at a different time and location. The (1) is just a notation. It does not appear in the postmarks and is only used by postal historians and collectors to differentiate between the different post offices.

14 February 1901:

Woodland (1) Post Office opened in the books.

28 March 1901:

Woodland (1) Post Office closed. Never opened.

What does it mean when there is a (1) or (2) after the name of a post office? Sometimes the numbers (1) and (2) appear after the name of a post office. These numbers indicate the (first) and (sec0nd) localities of post offices of the same name. If the post office name is used for two separate post offices in two respective villages at different times, they will be identified in this manner. These numbers do not necessarily indicate time periods. These numbers do not represent numbered stations. Some larger places like Auburn, have postal stations with numbers. These are not the same thing as the post offices we call Auburn (1), Auburn(2), etc. Also: the numbers do not appear in postmarks or any official post office publications, but are used by postal historians and collectors to refer to different post offices as noted above.

Credits:

This document is based on the original web page compiled by the V. F. Thomas Co. (2021), with revisions and additions by James Husson and Brian Damien (2024).

Thank you for the contributions to this page by Jim Husson and Max Lynds.

Thank you to the Waterville Stamp Club (<https://thewatervillestampclub.com>) for helping ensure this project's continuity.

Sources:

The Post Offices of Maine 2022, Maine Philatelic Society:

<http://www.mainephilatelic.org/books/TPOOM>

Perham & The Swedish Colony (New Sweden T15R3 & **Woodland** Plantations)

[map] from the 1877 Atlas of Aroostook County, Maine:

https://digitalmaine.com/atlas_aroostook_1877/45/

U. S. Geological Survey Topographic Map, Caribou, Maine 1932 includes entire town of Woodland:

https://ngmdb.usgs.gov/ht-bin/tv_browse.pl?id=1976a83d031a7a4c780948d7332e4d27

National Archives Catalog: Postmaster Appointments for Aroostook County, Maine.

<https://catalog.archives.gov/id/78746425>

Additional material, including links to official records of postmaster appointments, can be found at Research Resources for Maine Postal History: <http://www.mainephilatelic.org/books/post-office-sources.pdf>.